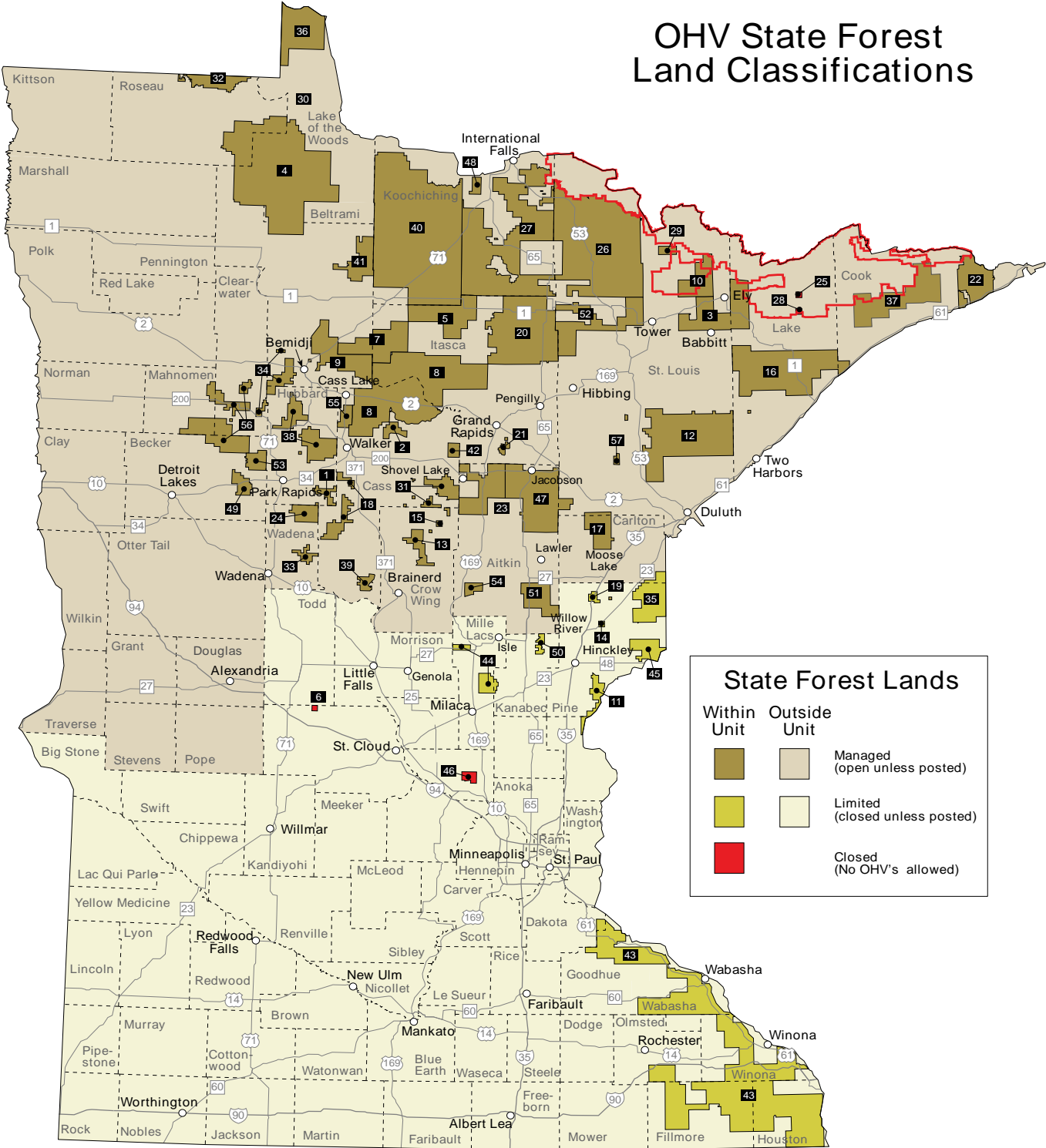


# OHV State Forest Land Classifications



State Forest Lands	
Within Unit	Outside Unit
<span style="display: inline-block; width: 15px; height: 15px; background-color: #8B4513; border: 1px solid black;"></span>	<span style="display: inline-block; width: 15px; height: 15px; background-color: #D2B48C; border: 1px solid black;"></span> Managed (open unless posted)
<span style="display: inline-block; width: 15px; height: 15px; background-color: #FFD700; border: 1px solid black;"></span>	<span style="display: inline-block; width: 15px; height: 15px; background-color: #F5F5DC; border: 1px solid black;"></span> Limited (closed unless posted)
<span style="display: inline-block; width: 15px; height: 15px; background-color: #FF0000; border: 1px solid black;"></span>	Closed (No OHV's allowed)

- |  |   |   |
|--|---|---|
| <ul style="list-style-type: none"> <li>1 Badoura State Forest</li> <li>2 Battleground State Forest</li> <li>3 Bear Island State Forest</li> <li>4 Beltrami Island State Forest</li> <li>5 Big Fork State Forest</li> <li>6 Birch Lakes State Forest</li> <li>7 Blackduck State Forest</li> <li>8 Bowstring State Forest</li> <li>9 Buena Vista State Forest</li> <li>10 Burntside State Forest</li> <li>11 Chengwatana State Forest</li> <li>12 Cloquet Valley State Forest</li> <li>13 Crow Wing State Forest</li> <li>14 D.A.R. State Forest</li> <li>15 Emily State Forest</li> <li>16 Finland State Forest</li> <li>17 Fond Du Lac State Forest</li> <li>18 Foot Hills State Forest</li> <li>19 General C.C. Andrews State Forest</li> </ul> | <ul style="list-style-type: none"> <li>20 George Washington State Forest</li> <li>21 Golden Anniversary State Forest</li> <li>22 Grand Portage State Forest</li> <li>23 Hill River State Forest</li> <li>24 Huntersville State Forest</li> <li>25 Insula Lake State Forest</li> <li>26 Kabetogama State Forest</li> <li>27 Koochiching State Forest</li> <li>28 Lake Isabella State Forest</li> <li>29 Lake Jeanette State Forest</li> <li>30 Lake of the Woods State Forest</li> <li>31 Land O'Lakes State Forest</li> <li>32 Lost River State Forest</li> <li>33 Lyons State Forest</li> <li>34 Mississippi Headwaters State Forest</li> <li>35</li> <li>36 Northwest Angle State Forest</li> <li>37 Pat Bayle State Forest</li> <li>38 Paul Bunyan State Forest</li> </ul> | <ul style="list-style-type: none"> <li>39 Pillsbury State Forest</li> <li>40 Pine Island State Forest</li> <li>41 Red Lake State Forest</li> <li>42 Remer State Forest</li> <li>43 R.J. Dorer Memorial Hardwood State Forest</li> <li>44 Rum River State Forest</li> <li>45 St. Croix State Forest</li> <li>46 Sand Dunes State Forest</li> <li>47 Savanna State Forest</li> <li>48 Smokey Bear State Forest</li> <li>49 Smoky Hills State Forest</li> <li>50 Snake River State Forest</li> <li>51 Solana State Forest</li> <li>52 Sturgeon River State Forest</li> <li>53 Two Inlets State Forest</li> <li>54 Wealthwood State Forest</li> <li>55 Welsh Lake State Forest</li> <li>56 White Earth State Forest</li> <li>57 Whiteface River State Forest</li> </ul> |
|--|---|---|

The portions of Cook, Lake, St. Louis, & Koochiching Counties that lie within the BWCA & Voyageurs National Park boundaries are Closed to OHV use.