

Watershed Report Card: Rapid River



People and Places:

Watershed Population:

2000 census - 215

2010 census - 182

Largest Cities - Population:

Oaks Corner - None

Wayland - None

Carp - None

Counties - % of watershed:

Lake of the Woods - 54 %

Koochiching - 23 %

Beltrami - 23 %

Watershed Area:

Watershed size:

603,843 acres

944 square miles

Watershed Surface Area:

Percent Land - 100 %

Percent Water - 0 %

HUC8 ID:

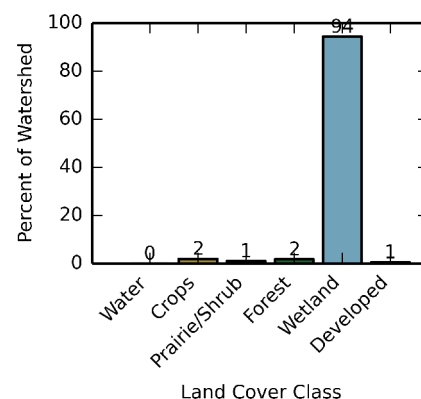
09030007

Basin Name:

Rainy River (0903)

Land Use:

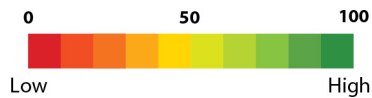
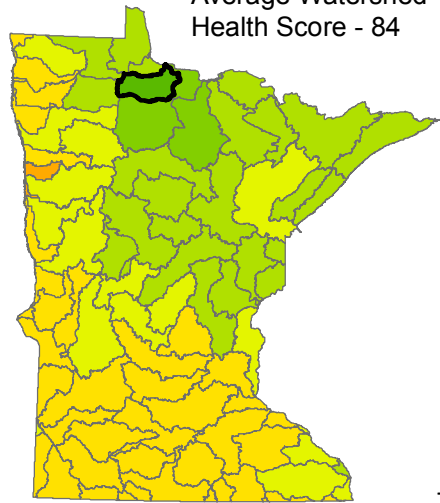
Percent of watershed area by land cover type:



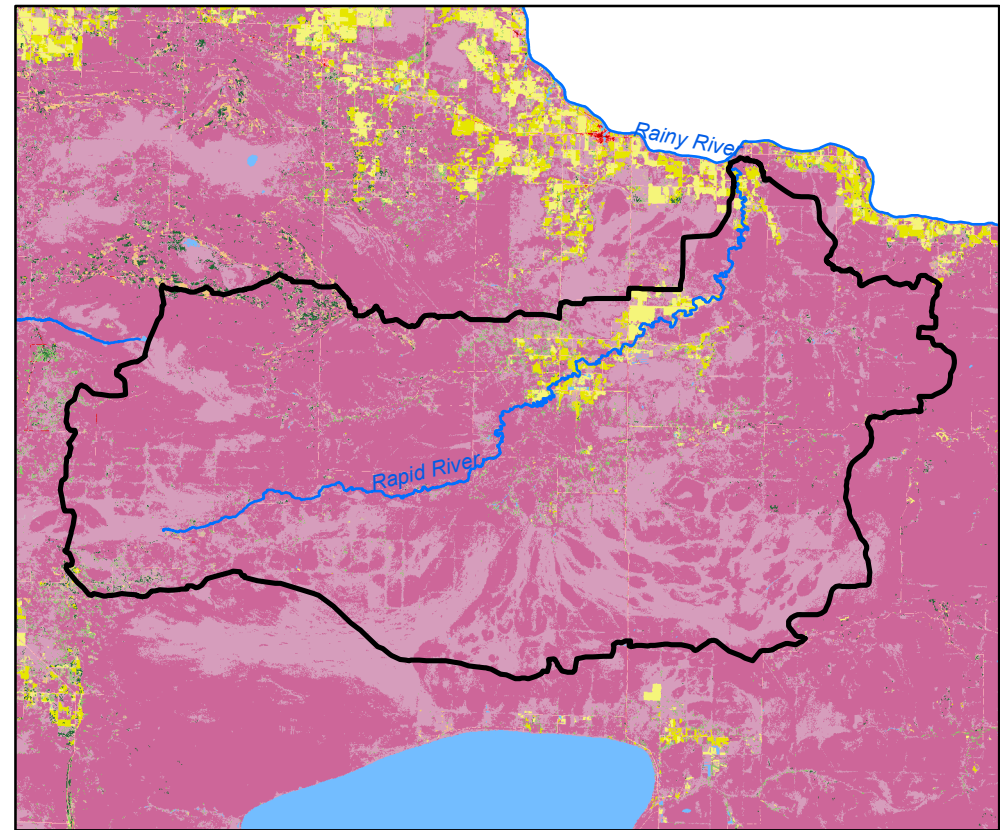
Watershed Health Report - Major Watershed

Rapid River

Average Watershed Health Score - 84



These health scores are calculated at the Major Watershed (HUC8) scale. Health score names followed by (*) are also calculated at the DNR Catchment scale (subdivided HUC12). Those results are reported on the following pages.



Hydrology

Component Health Score (index average) 81

Index Scores

Perennial Cover*	98
Impervious Cover*	99
Water Withdrawal*	99
Flow Variability	58
Hydrologic Storage	50
Sub-Scores	
Altered Streams*	0
Surface Storage	100



Geomorphology

Component Health Score (index average) 94

Index Scores

Soil Erosion Potential*	95
Groundwater Susceptibility	88
Climate Vulnerability	100



Biology

Component Health Score (index average) 66

Index Scores

Terrestrial Habitat Quality*	82
Stream Species Quality*	78
Species Richness	67
At-Risk Species Richness	36



Connectivity

Component Health Score (index average) 98

Index Scores

Terrestrial Habitat Connectivity	96
Aquatic Connectivity*	95
Riparian Connectivity*	98



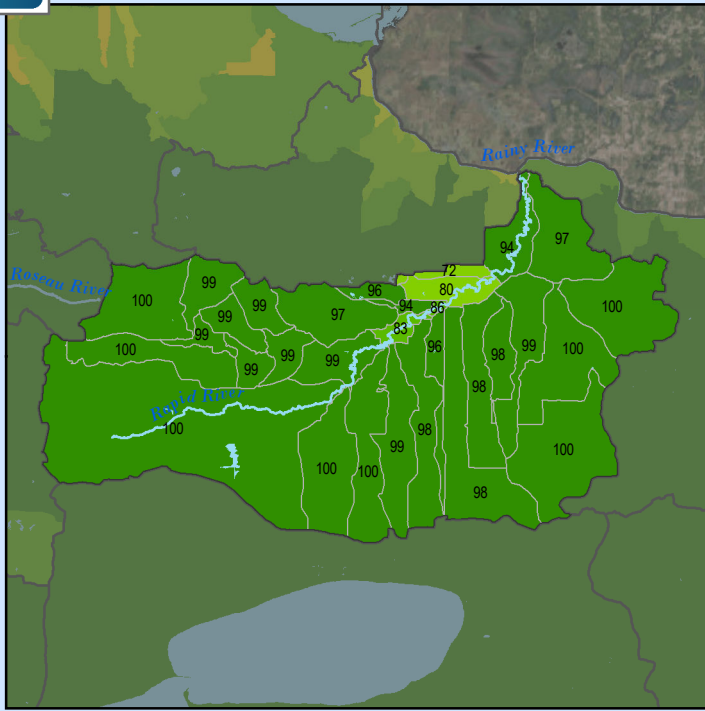
Water Quality

Component Health Score (index average) 82

Index Scores

Non-Point Pollution Sources	93
Sub-Score	
Phosphorus Risk*	99
Localized Pollution Sources*	100
Assessments	54

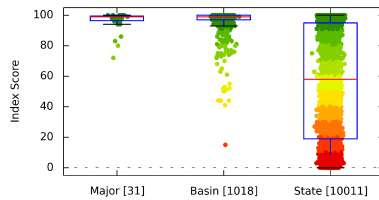
Perennial Cover (2011)



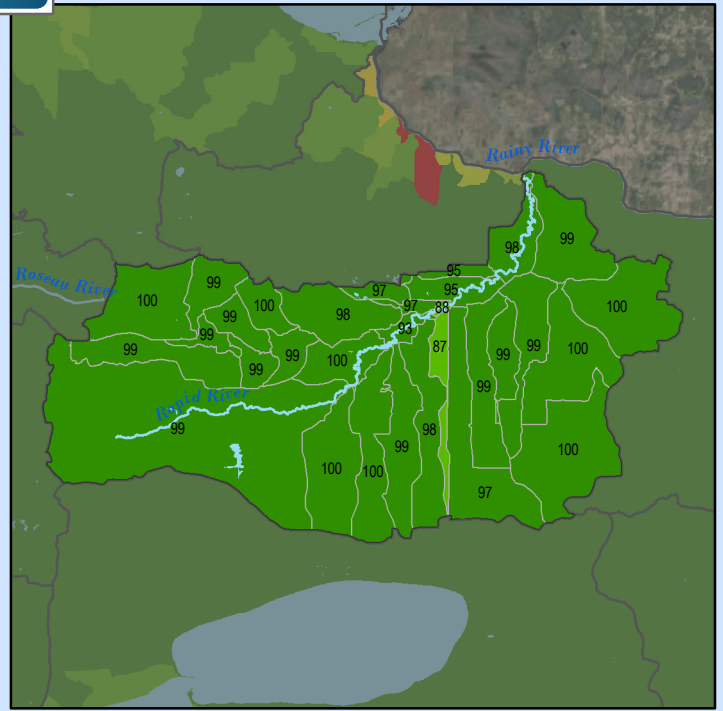
Health Score Distributions:

Rapid River

Min: 72
Max: 100
Median: 99.0
Mean: 96.06
Standard Dev: 6.56



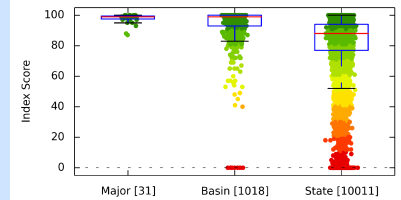
Impervious Cover (2011)



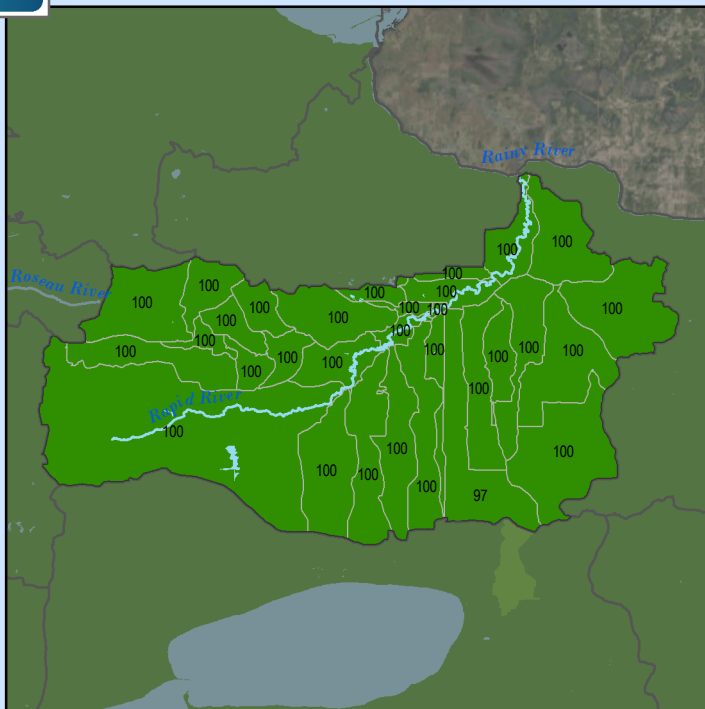
Health Score Distributions:

Rapid River

Min: 87
Max: 100
Median: 99.0
Mean: 97.77
Standard Dev: 3.16



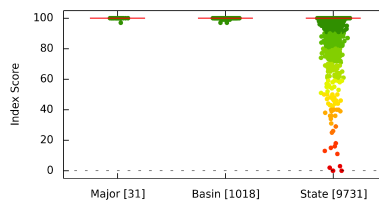
Water Withdrawal Index



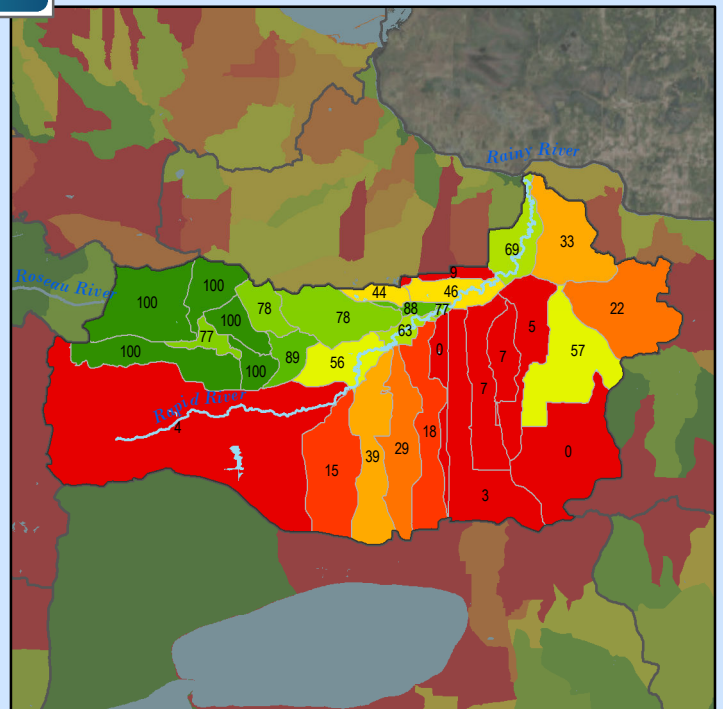
Health Score Distributions:

Rapid River

Min: 97
Max: 100
Median: 100.0
Mean: 99.9
Standard Dev: 0.53



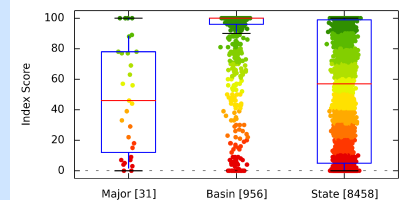
Altered Streams



Health Score Distributions:

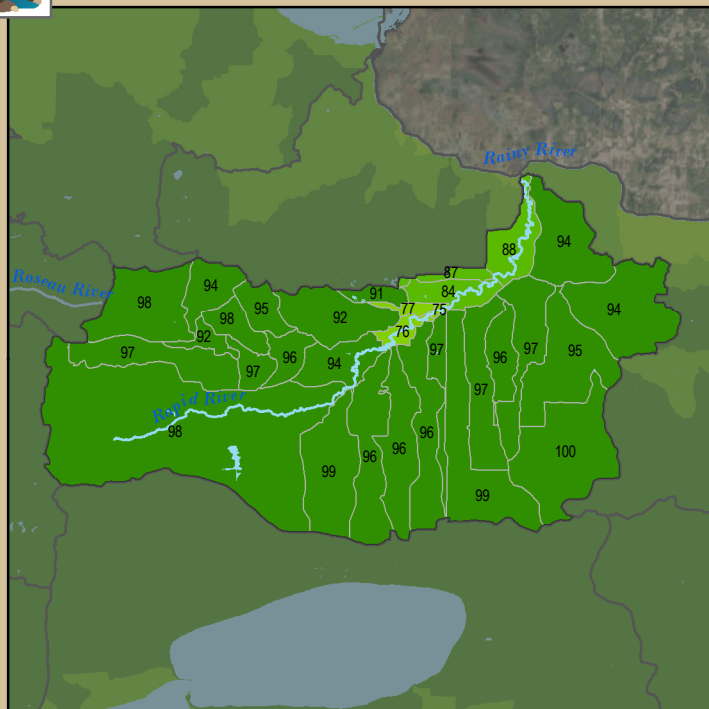
Rapid River

Min: 0
Max: 100
Median: 46.0
Mean: 48.81
Standard Dev: 35.8



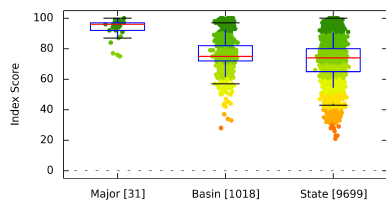


Soil Erosion Potential

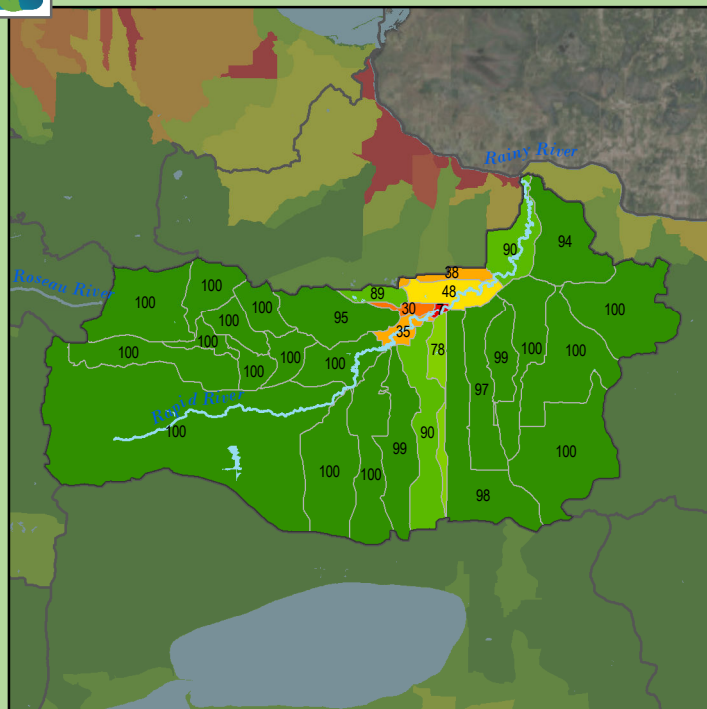


Health Score Distributions:

Rapid River
Min: 75
Max: 100
Median: 96.0
Mean: 93.06
Standard Dev: 6.6

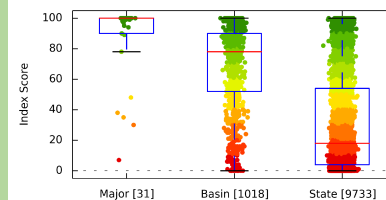


Terrestrial Habitat Quality

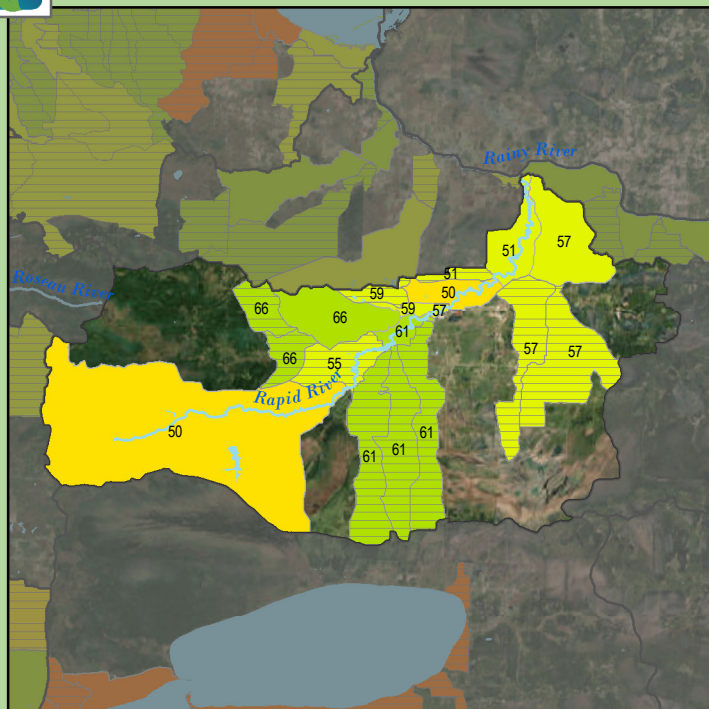


Health Score Distributions:

Rapid River
Min: 7
Max: 100
Median: 100.0
Mean: 86.68
Standard Dev: 25.21

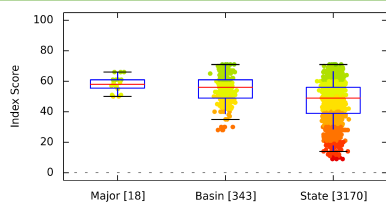


Stream Species Quality - Mussel Score

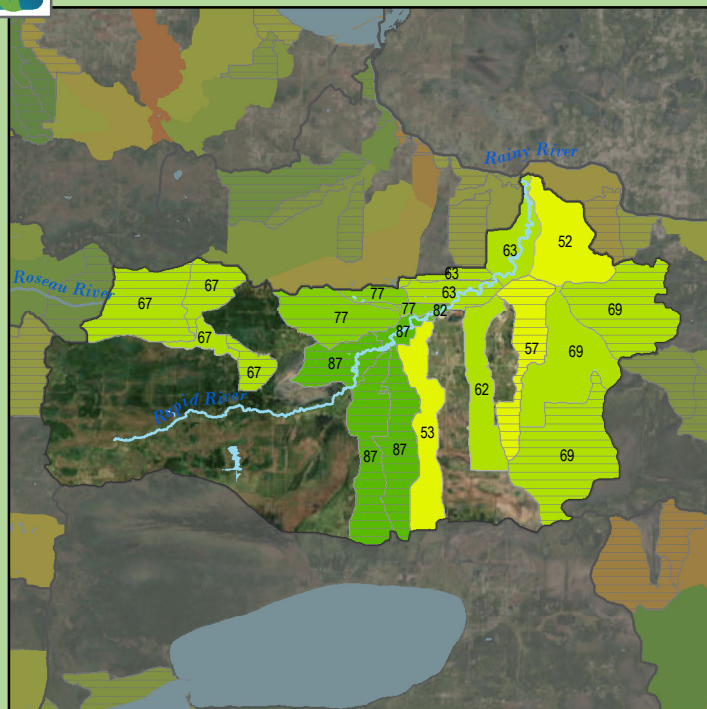


Health Score Distributions:

Rapid River
Min: 50
Max: 66
Median: 58.0
Mean: 58.06
Standard Dev: 5.1

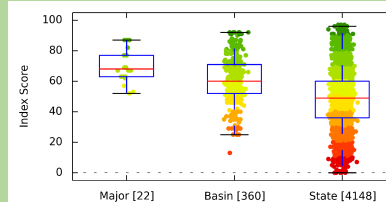


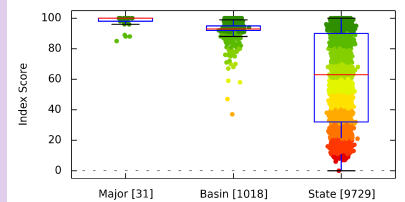
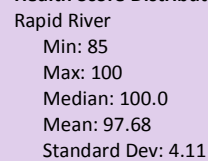
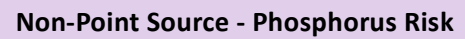
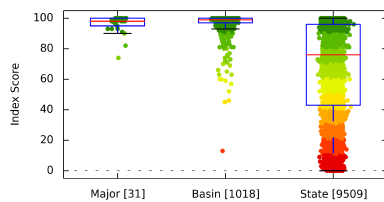
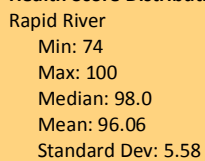
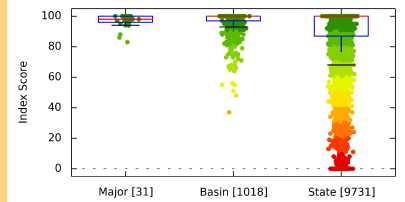
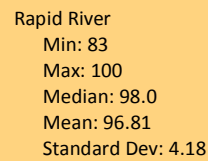
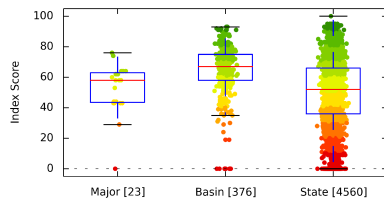
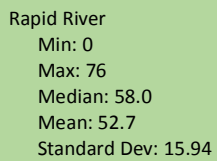
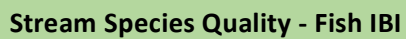
Stream Species Quality - Aquatic Invertebrate IBI



Health Score Distributions:

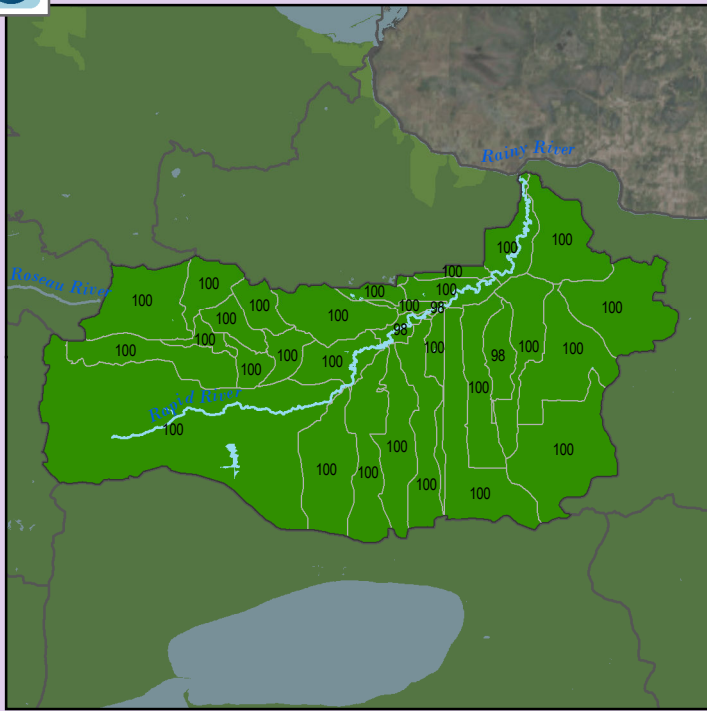
Rapid River
Min: 52
Max: 87
Median: 68.0
Mean: 70.41
Standard Dev: 10.61





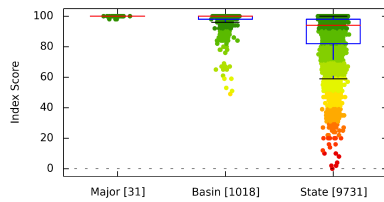


Localized Pollution Sources

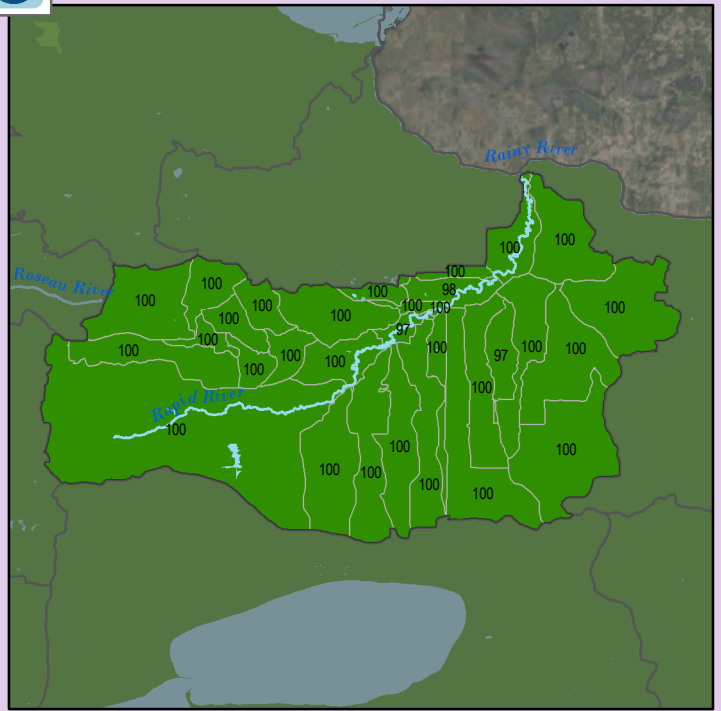


Health Score Distributions:

Rapid River
Min: 98
Max: 100
Median: 100.0
Mean: 99.81
Standard Dev: 0.59

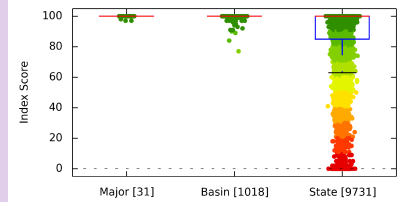


Localized Pollution Sources - Animal Units

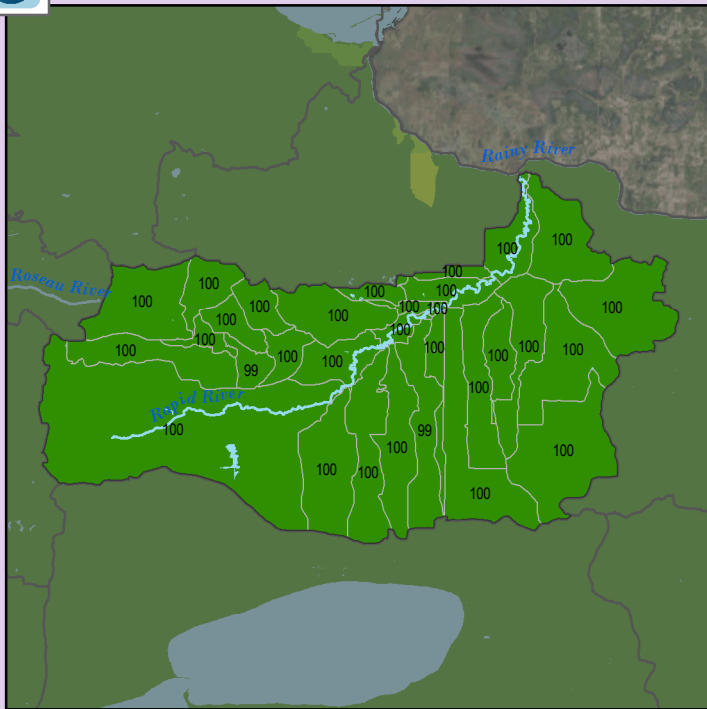


Health Score Distributions:

Rapid River
Min: 97
Max: 100
Median: 100.0
Mean: 99.74
Standard Dev: 0.8

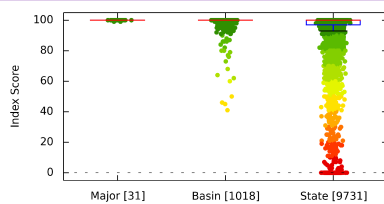


Localized Pollution Sources - Potential Contaminants

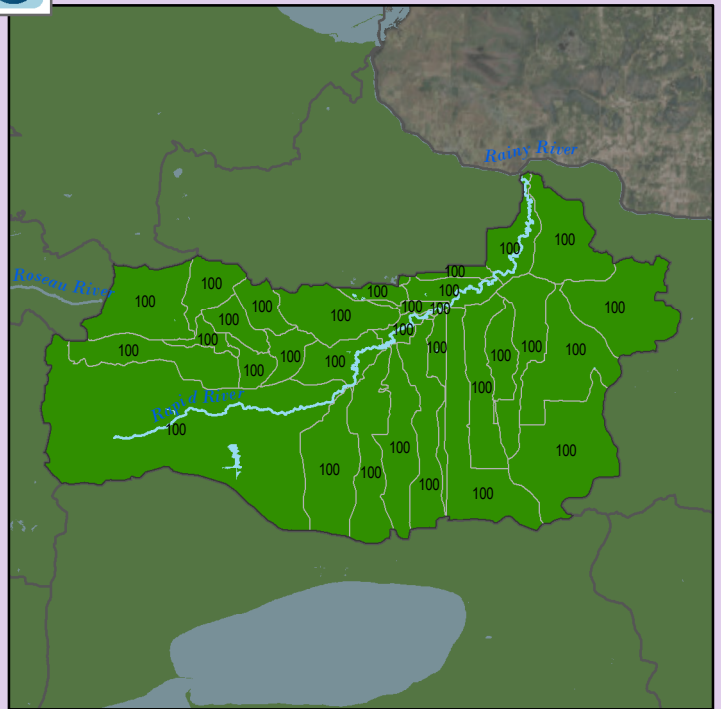


Health Score Distributions:

Rapid River
Min: 99
Max: 100
Median: 100.0
Mean: 99.94
Standard Dev: 0.25

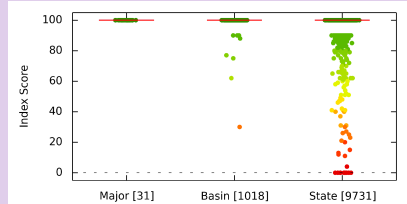


Localized Pollution Sources - Superfund Sites



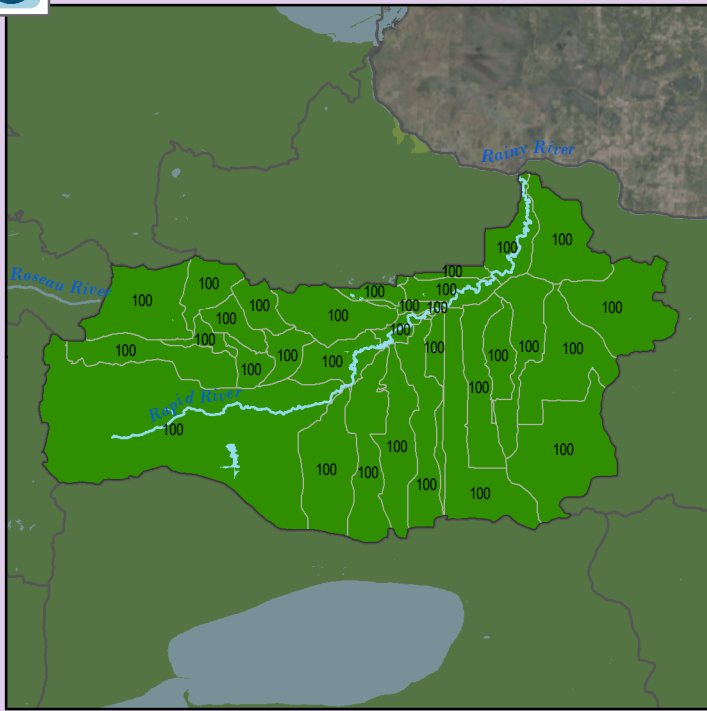
Health Score Distributions:

Rapid River
Min: 100
Max: 100
Median: 100.0
Mean: 100.0
Standard Dev: 0.0



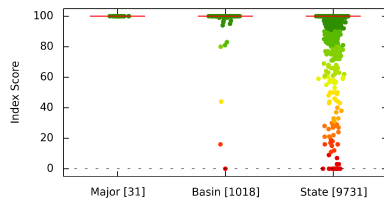


Localized Pollution Sources - Wastewater Treatment

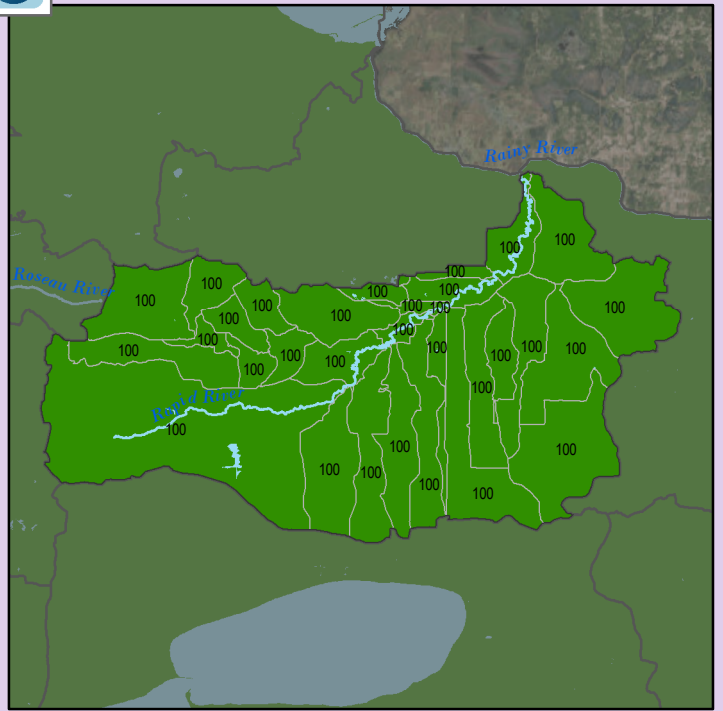


Health Score Distributions:

Rapid River
Min: 100
Max: 100
Median: 100.0
Mean: 100.0
Standard Dev: 0.0

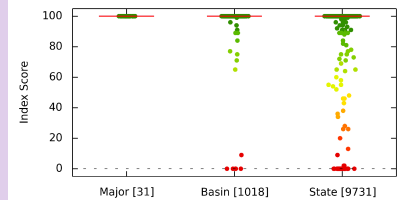


Localized Pollution Sources - Open Pit Mines

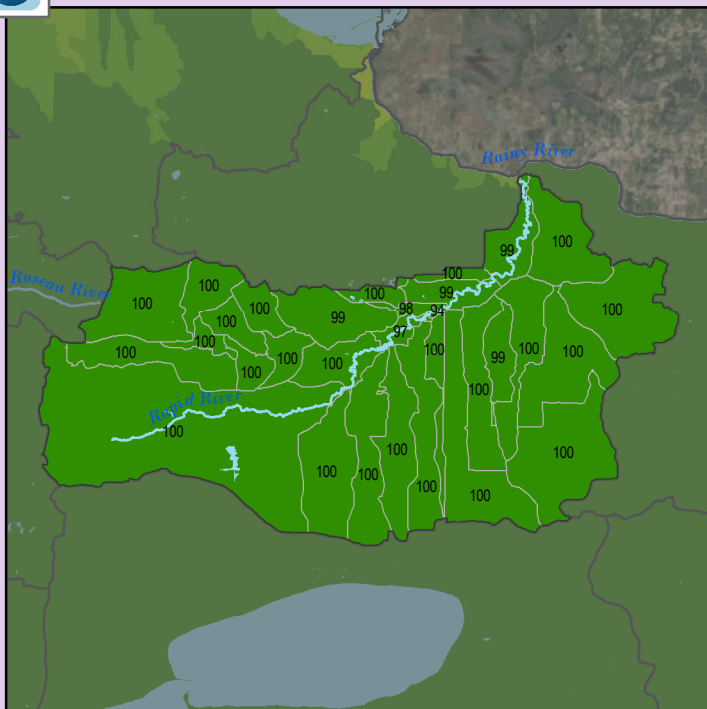


Health Score Distributions:

Rapid River
Min: 100
Max: 100
Median: 100.0
Mean: 100.0
Standard Dev: 0.0



Localized Pollution Sources - Septic Systems



Health Score Distributions:

Rapid River
Min: 94
Max: 100
Median: 100.0
Mean: 99.52
Standard Dev: 1.21

