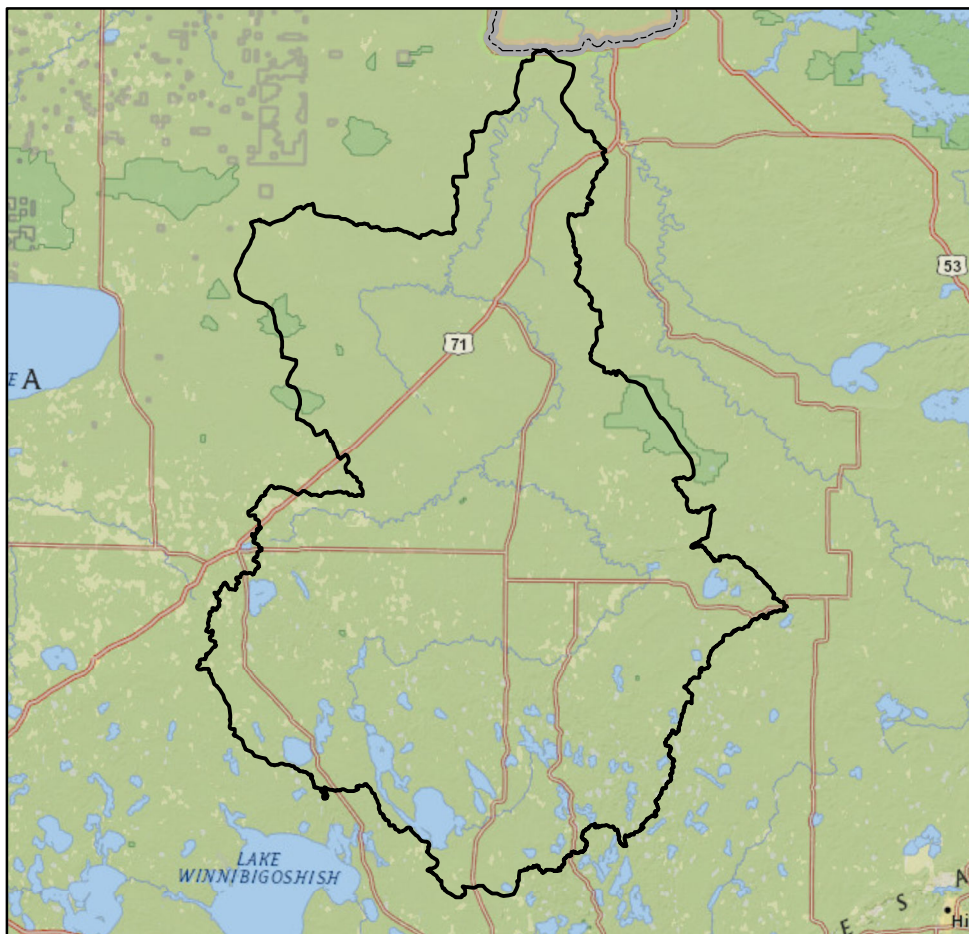
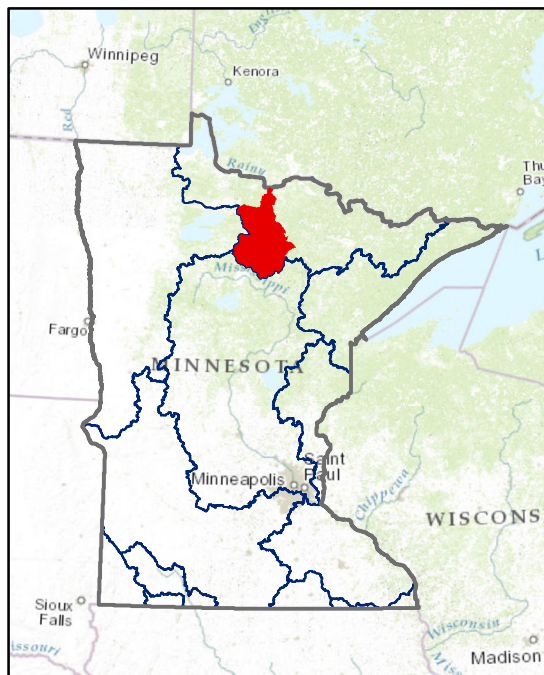


Watershed Report Card: Big Fork River



People and Places:

Watershed Population:

2000 census - 5,217

2010 census - 5,079

Largest Cities - Population:

Marcell - 467

Bigfork - 446

Big Falls - 236

Bowstring - 230

Max - 142

Counties - % of watershed:

Koochiching - 51 %

Itasca - 49 %

Watershed Area:

Watershed size:

1,315,135 acres

2,055 square miles

Watershed Surface Area:

Percent Land - 95 %

Percent Water - 5 %

HUC8 ID:

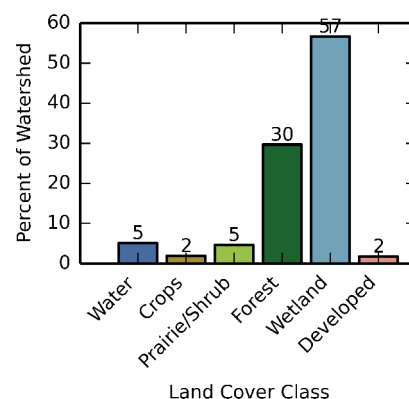
09030006

Basin Name:

Rainy River (0903)

Land Use:

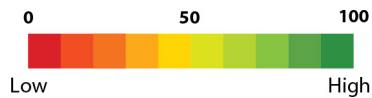
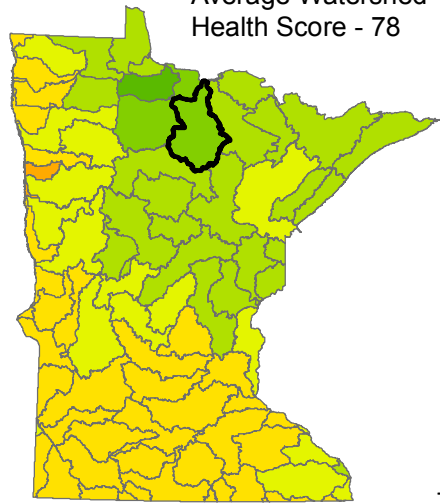
Percent of watershed area by land cover type:



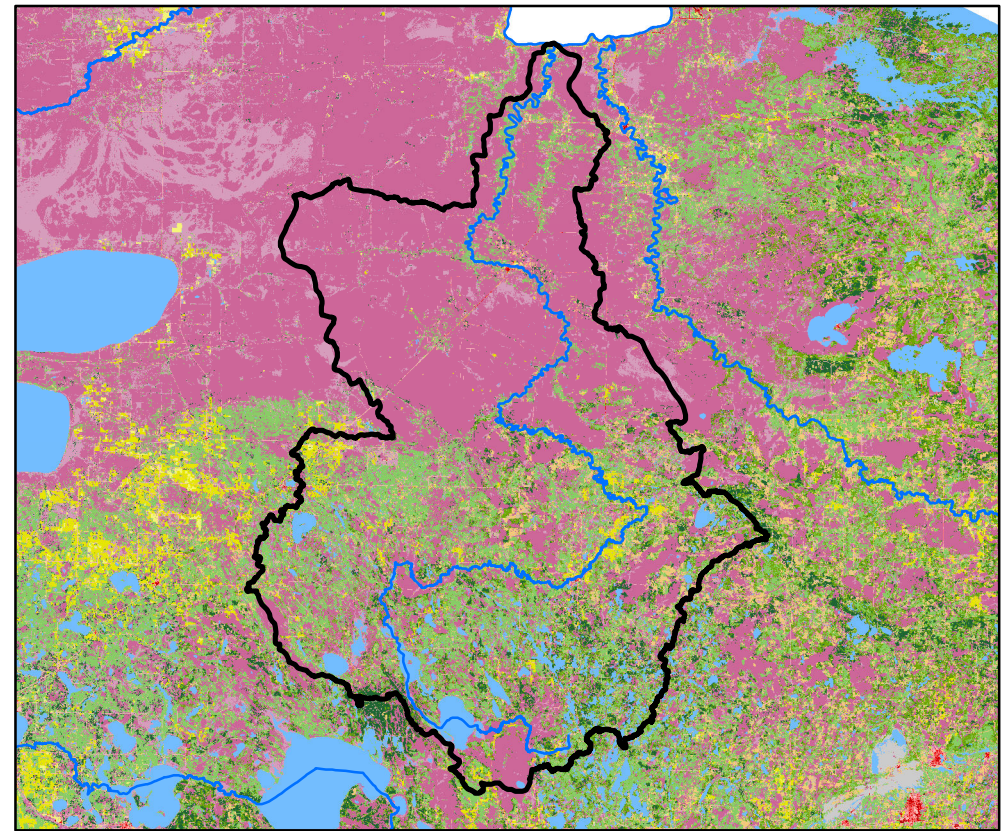
Watershed Health Report - Major Watershed

Big Fork River

Average Watershed Health Score - 78



These health scores are calculated at the Major Watershed (HUC8) scale. Health score names followed by (*) are also calculated at the DNR Catchment scale (subdivided HUC12). Those results are reported on the following pages.



Hydrology

Component Health Score
(index average) 90

Index Scores

Perennial Cover*	98
Impervious Cover*	92
Water Withdrawal*	99
Flow Variability	69
Hydrologic Storage	84
Sub-Scores	
Altered Streams*	69
Surface Storage	99



Geomorphology

Component Health Score
(index average) 68

Index Scores

Soil Erosion Potential*	77
Groundwater Susceptibility	73
Climate Vulnerability	55



Biology

Component Health Score
(index average) 58

Index Scores

Terrestrial Habitat Quality*	61
Stream Species Quality*	77
Species Richness	59
At-Risk Species Richness	33



Connectivity

Component Health Score
(index average) 75

Index Scores

Terrestrial Habitat Connectivity	67
Aquatic Connectivity*	89
Riparian Connectivity*	98



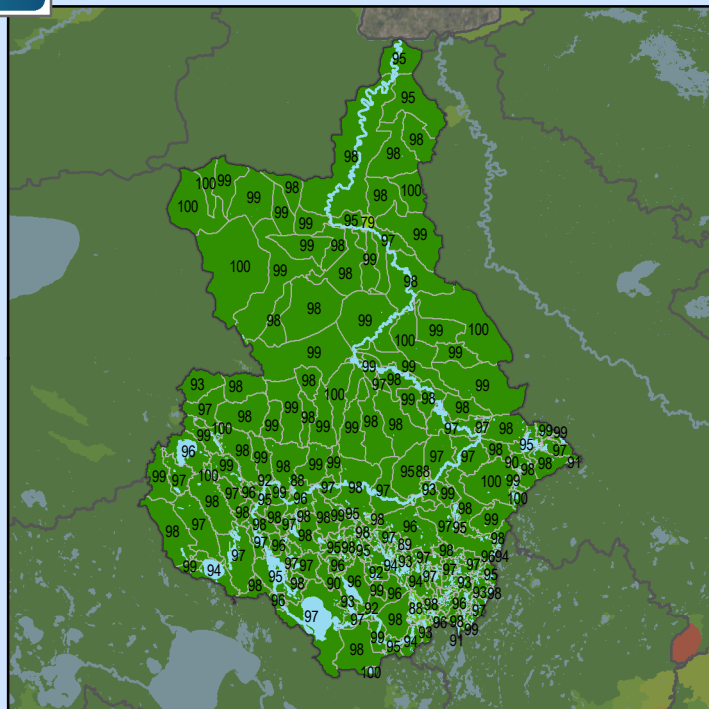
Water Quality

Component Health Score
(index average) 97

Index Scores

Non-Point Pollution Sources	95
Sub-Score	
Phosphorus Risk*	95
Localized Pollution Sources*	99
Assessments	98

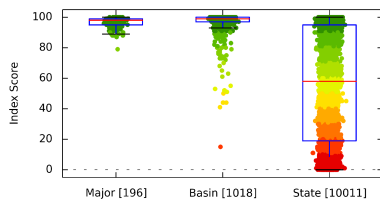
Perennial Cover (2011)



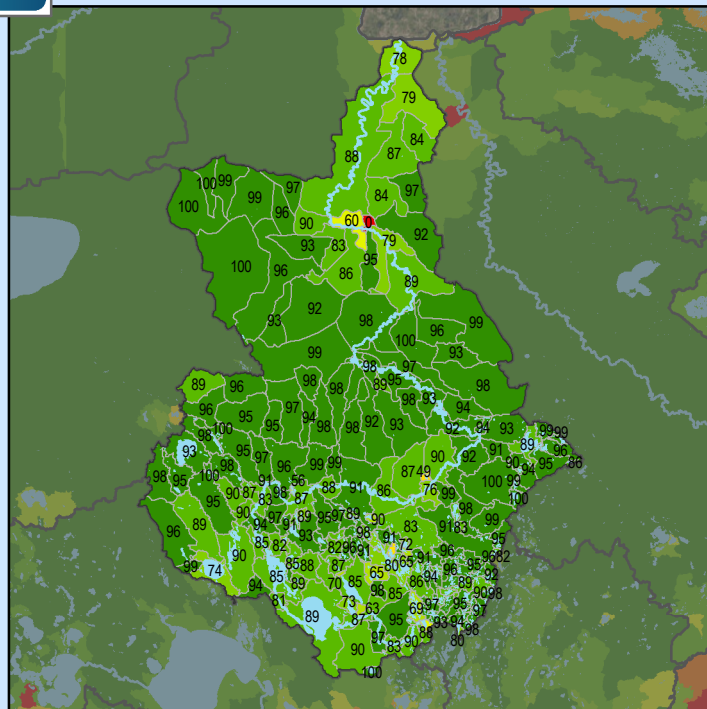
Health Score Distributions:

Big Fork River

Min: 79
Max: 100
Median: 98.0
Mean: 96.64
Standard Dev: 2.97



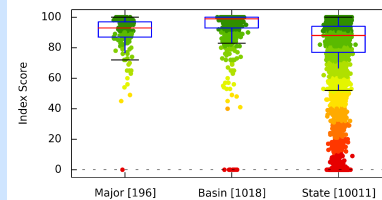
Impervious Cover (2011)



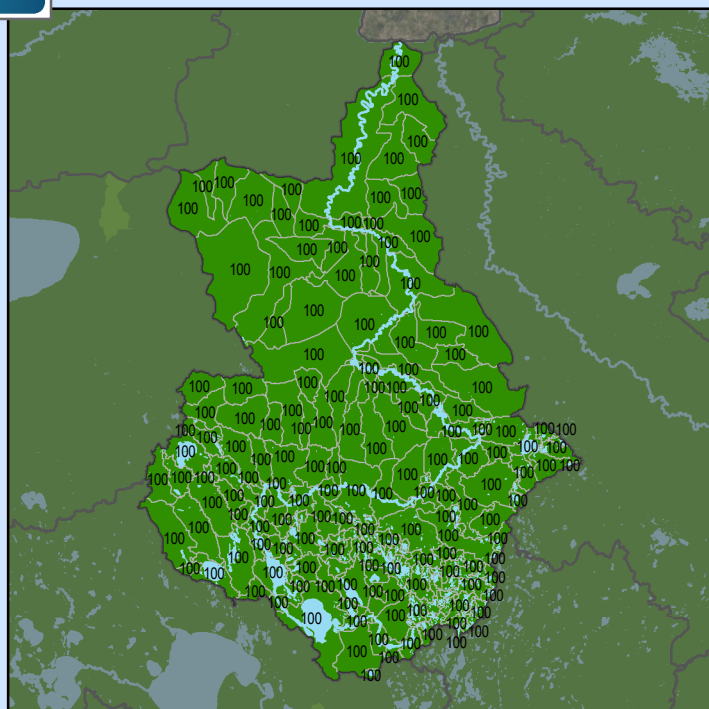
Health Score Distributions:

Big Fork River

Min: 0
Max: 100
Median: 93.0
Mean: 89.64
Standard Dev: 11.69



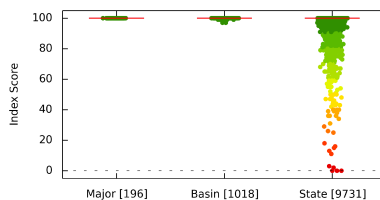
Water Withdrawal Index



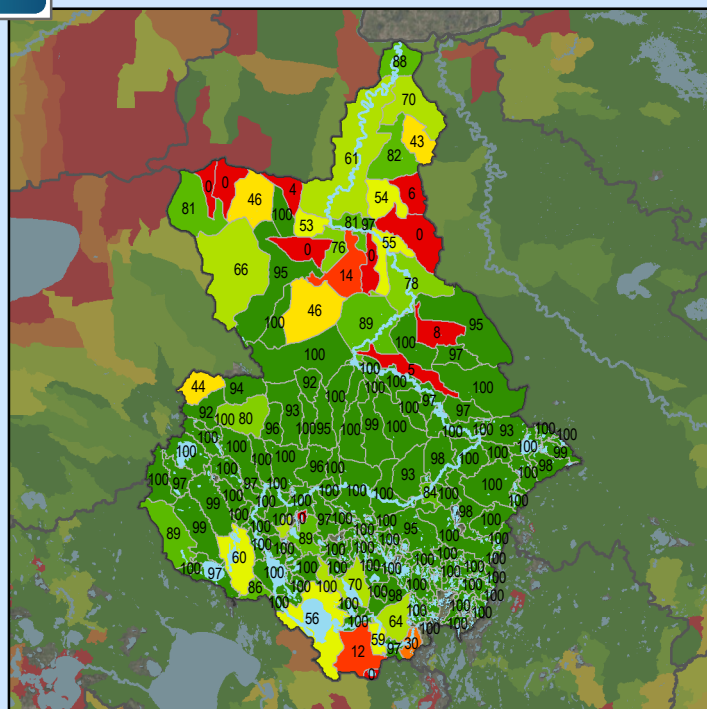
Health Score Distributions:

Big Fork River

Min: 100
Max: 100
Median: 100.0
Mean: 100.0
Standard Dev: 0.0



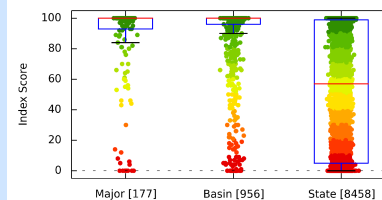
Altered Streams



Health Score Distributions:

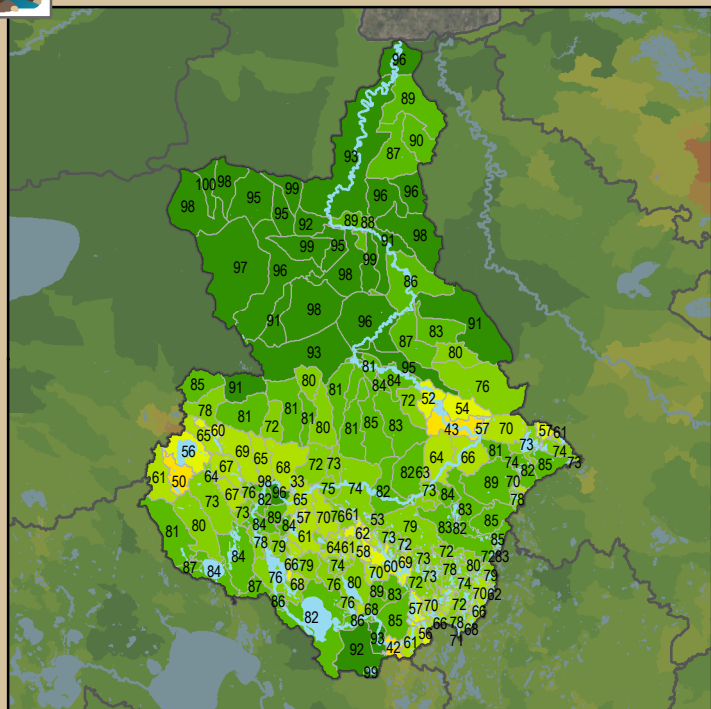
Big Fork River

Min: 0
Max: 100
Median: 100.0
Mean: 86.92
Standard Dev: 27.11



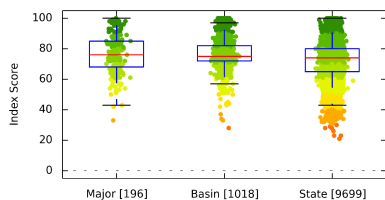


Soil Erosion Potential

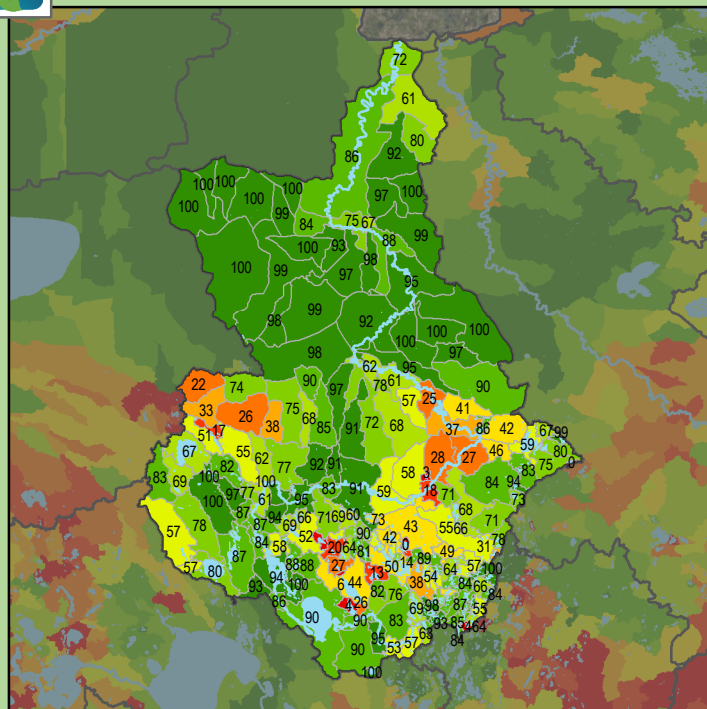


Health Score Distributions:

Big Fork River
Min: 33
Max: 100
Median: 76.0
Mean: 76.41
Standard Dev: 12.83

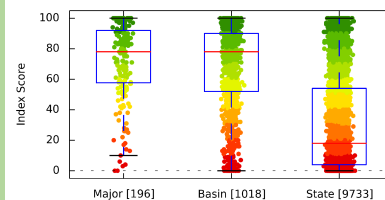


Terrestrial Habitat Quality

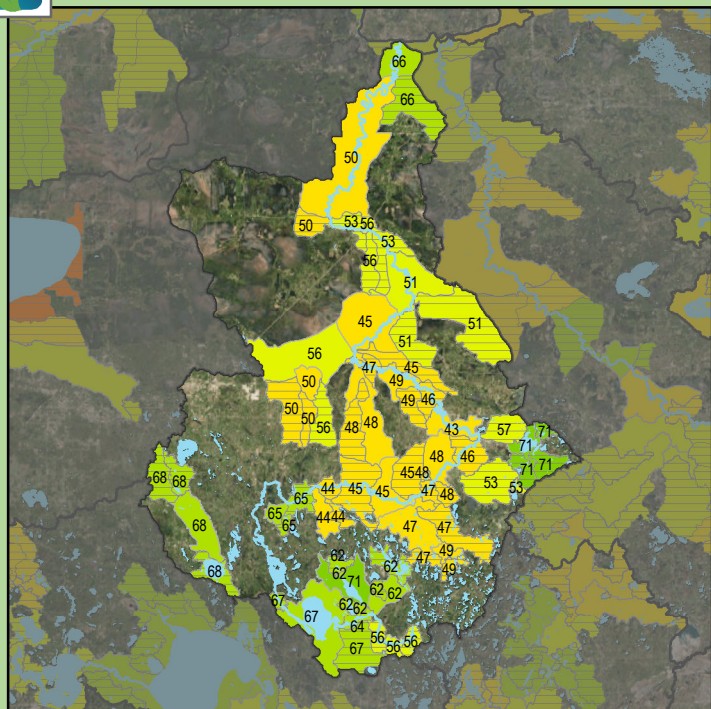


Health Score Distributions:

Big Fork River
Min: 0
Max: 100
Median: 78.0
Mean: 71.65
Standard Dev: 25.49

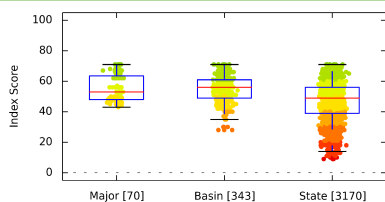


Stream Species Quality - Mussel Score

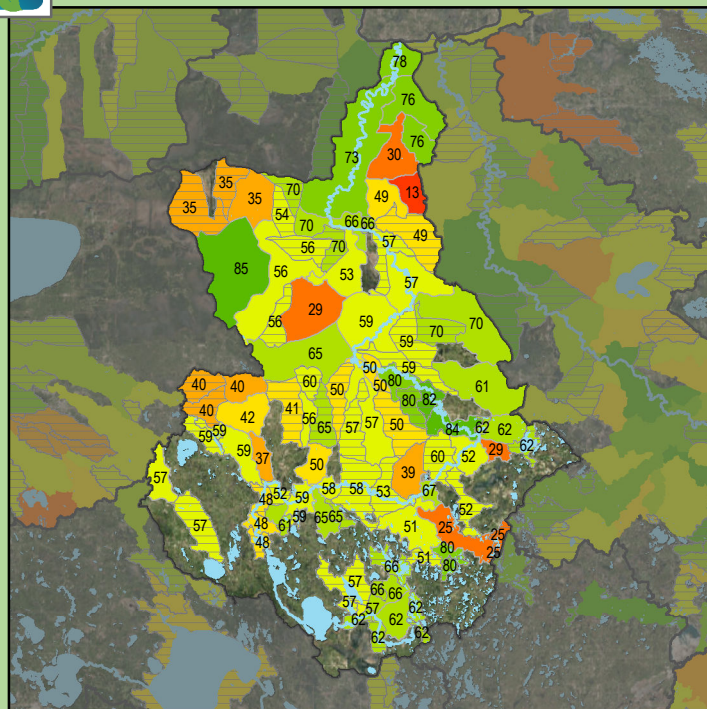


Health Score Distributions:

Big Fork River
Min: 43
Max: 71
Median: 53.0
Mean: 55.43
Standard Dev: 8.8

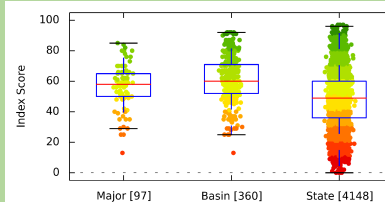


Stream Species Quality - Aquatic Invertebrate IBI



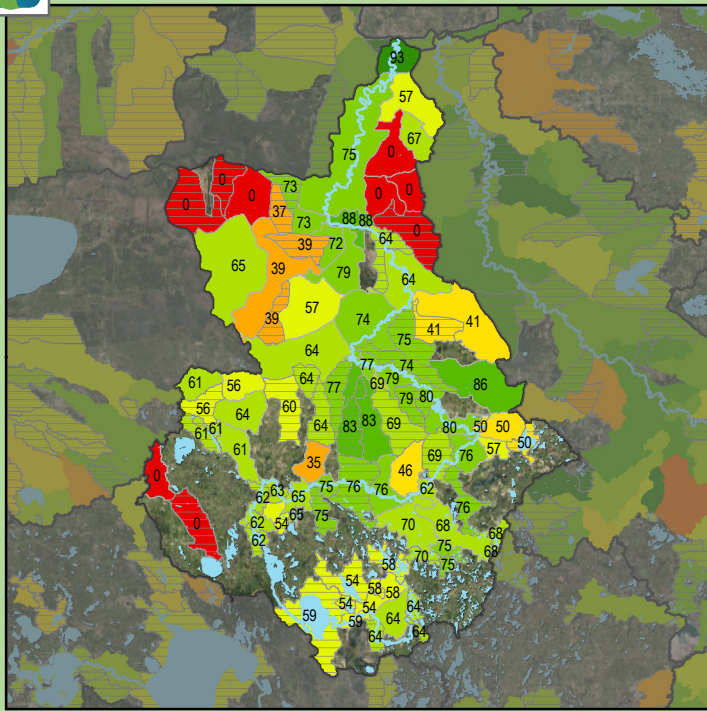
Health Score Distributions:

Big Fork River
Min: 13
Max: 85
Median: 58.0
Mean: 56.44
Standard Dev: 14.06





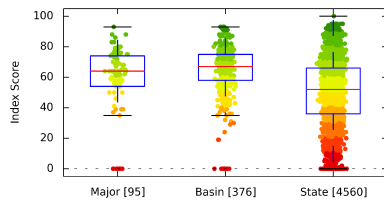
Stream Species Quality - Fish IBI



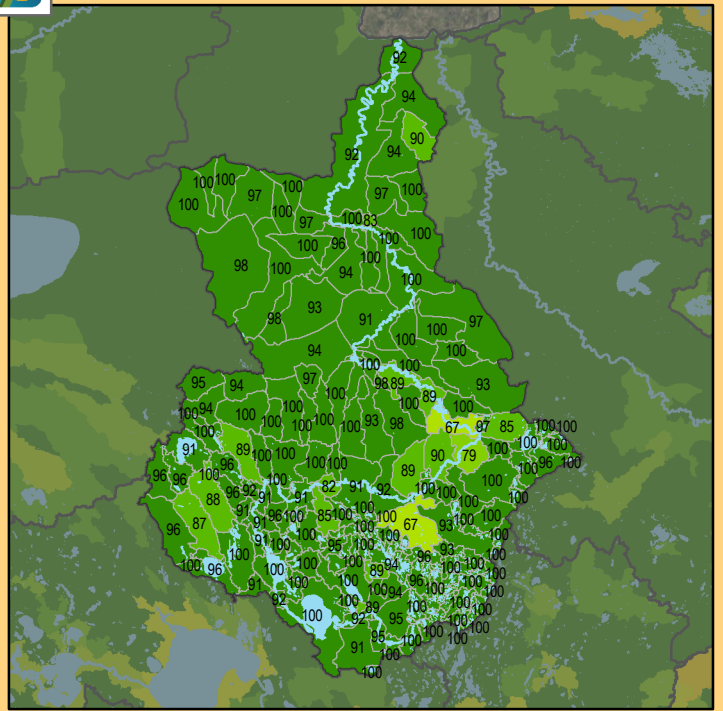
Health Score Distributions:

Big Fork River

Min: 0
Max: 93
Median: 64.0
Mean: 58.65
Standard Dev: 22.3



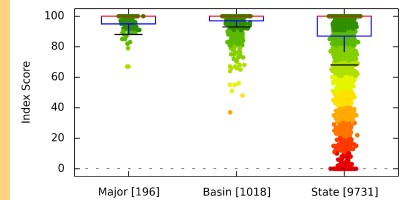
Aquatic Connectivity



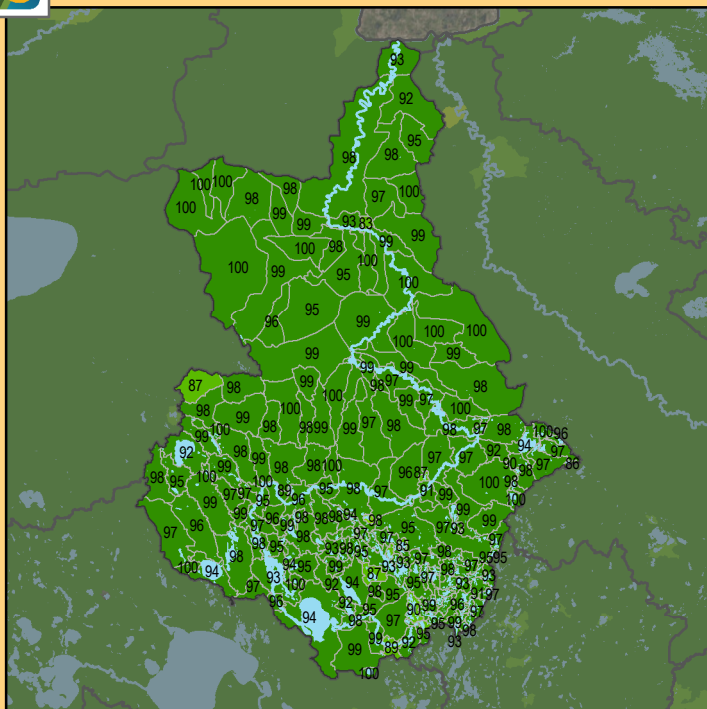
Health Score Distributions:

Big Fork River

Min: 67
Max: 100
Median: 100.0
Mean: 97.02
Standard Dev: 5.2



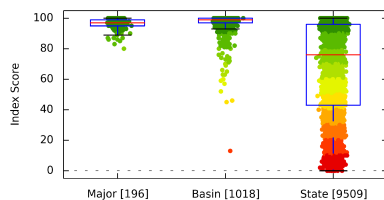
Riparian Connectivity



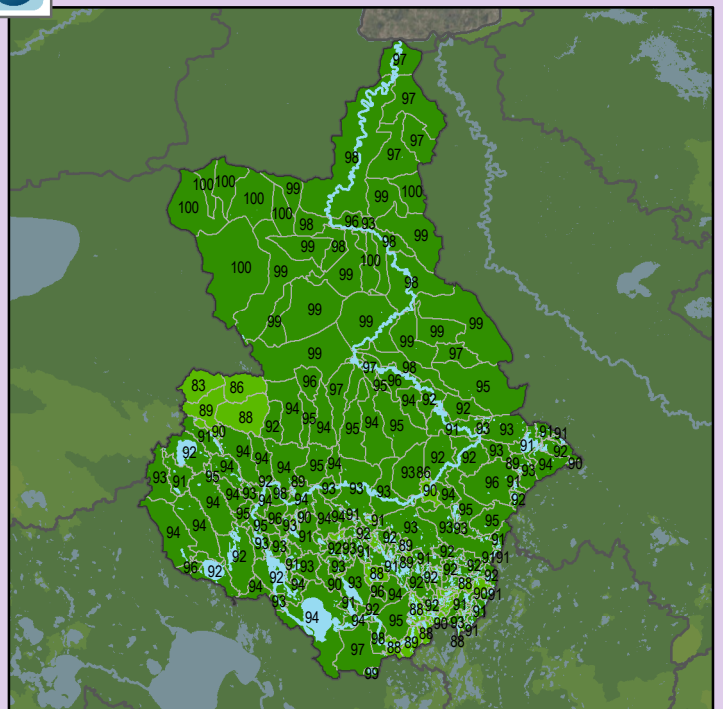
Health Score Distributions:

Big Fork River

Min: 80
Max: 100
Median: 97.0
Mean: 96.34
Standard Dev: 3.49



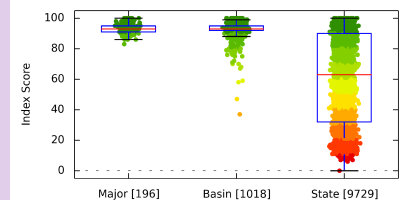
Non-Point Source - Phosphorus Risk



Health Score Distributions:

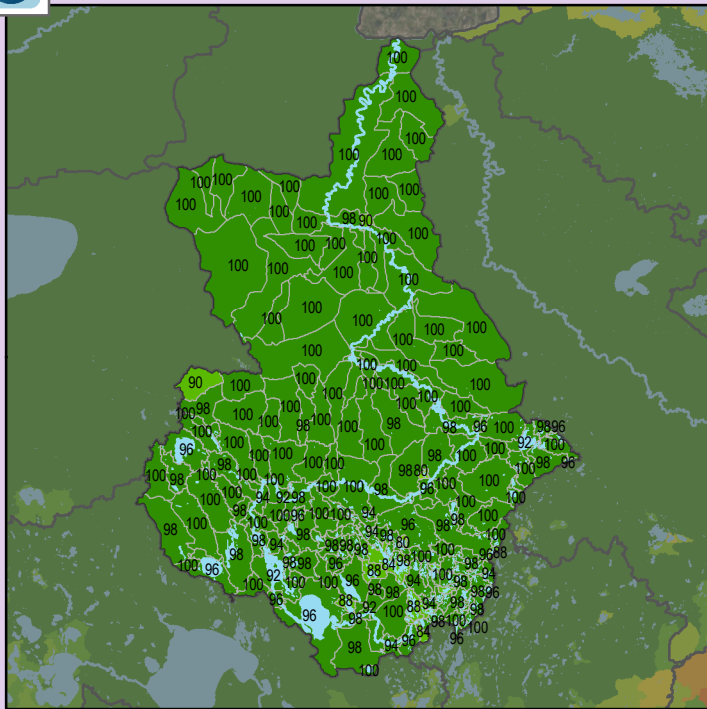
Big Fork River

Min: 83
Max: 100
Median: 93.0
Mean: 93.27
Standard Dev: 3.34



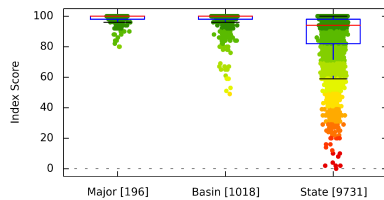


Localized Pollution Sources

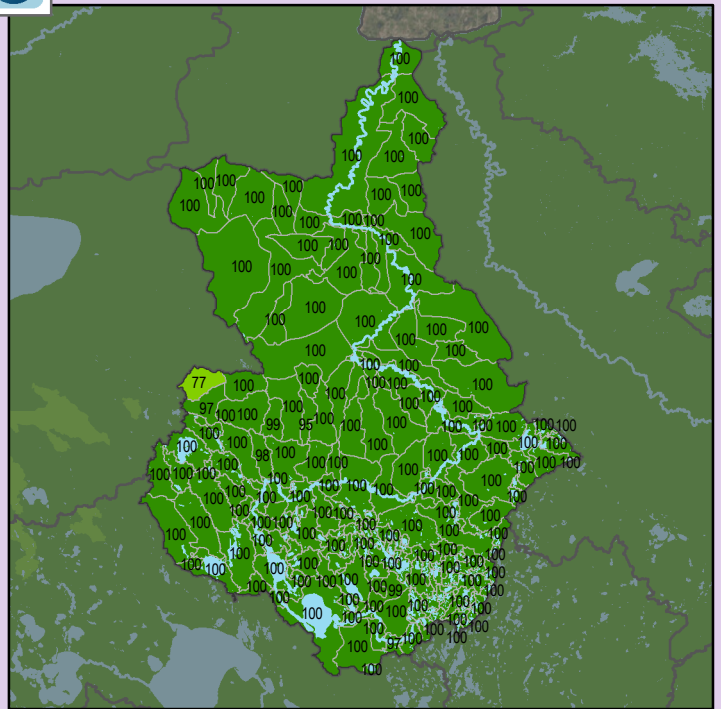


Health Score Distributions:

Big Fork River
Min: 80
Max: 100
Median: 100.0
Mean: 97.63
Standard Dev: 4.01

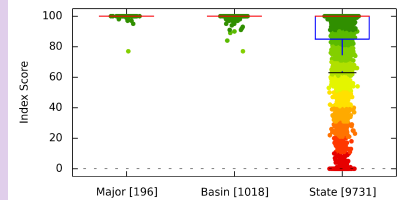


Localized Pollution Sources - Animal Units

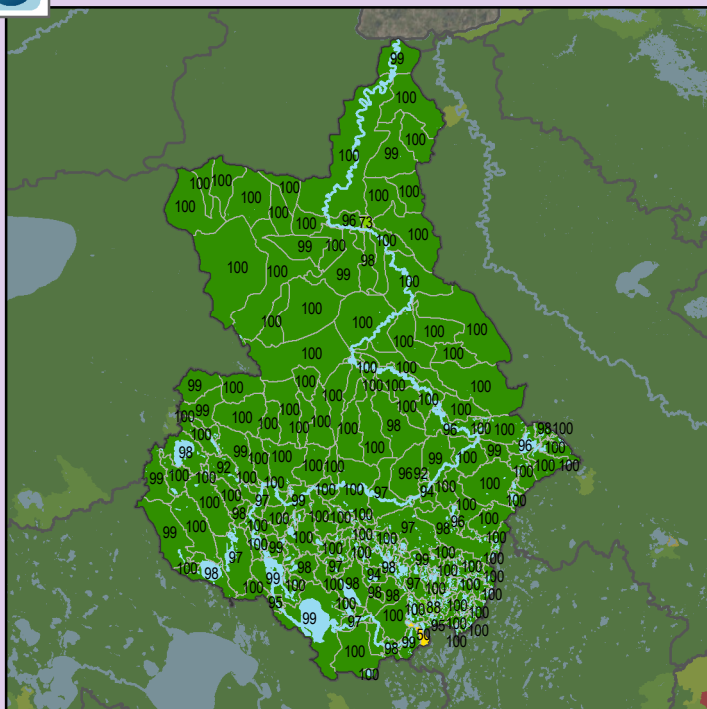


Health Score Distributions:

Big Fork River
Min: 77
Max: 100
Median: 100.0
Mean: 99.81
Standard Dev: 1.71

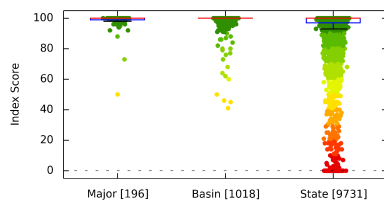


Localized Pollution Sources - Potential Contaminants

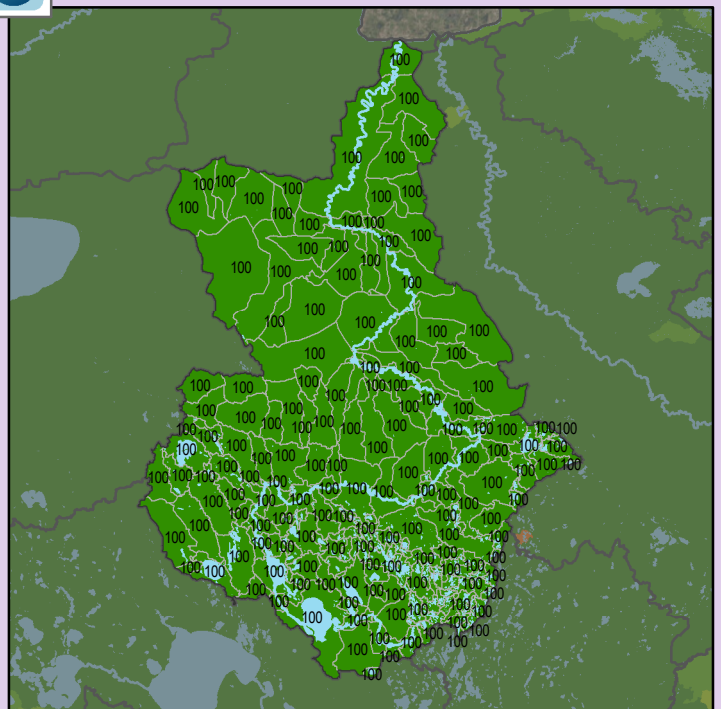


Health Score Distributions:

Big Fork River
Min: 50
Max: 100
Median: 100.0
Mean: 98.92
Standard Dev: 4.29

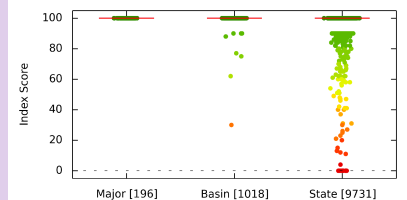


Localized Pollution Sources - Superfund Sites



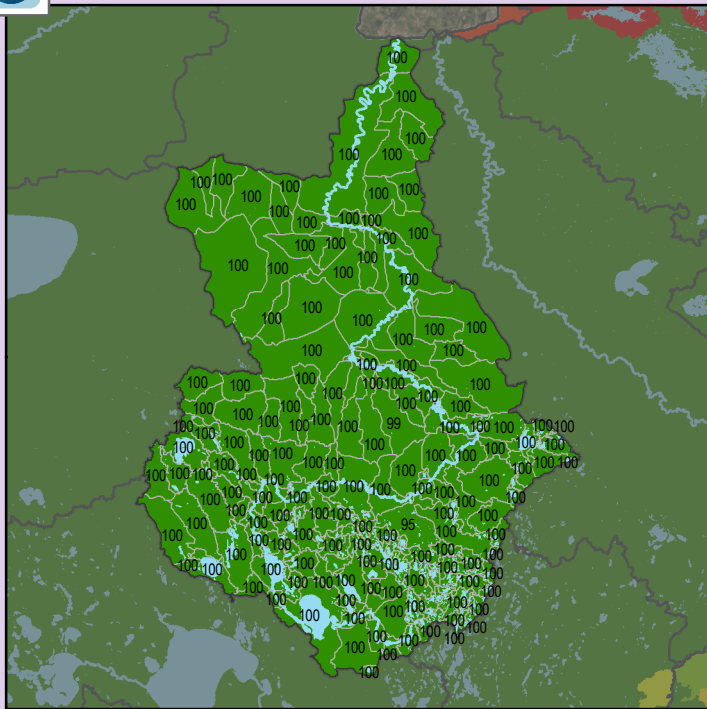
Health Score Distributions:

Big Fork River
Min: 100
Max: 100
Median: 100.0
Mean: 100.0
Standard Dev: 0.0



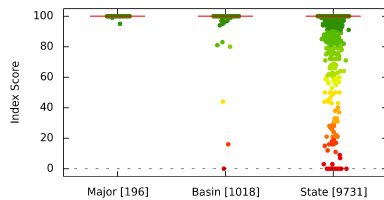


Localized Pollution Sources - Wastewater Treatment

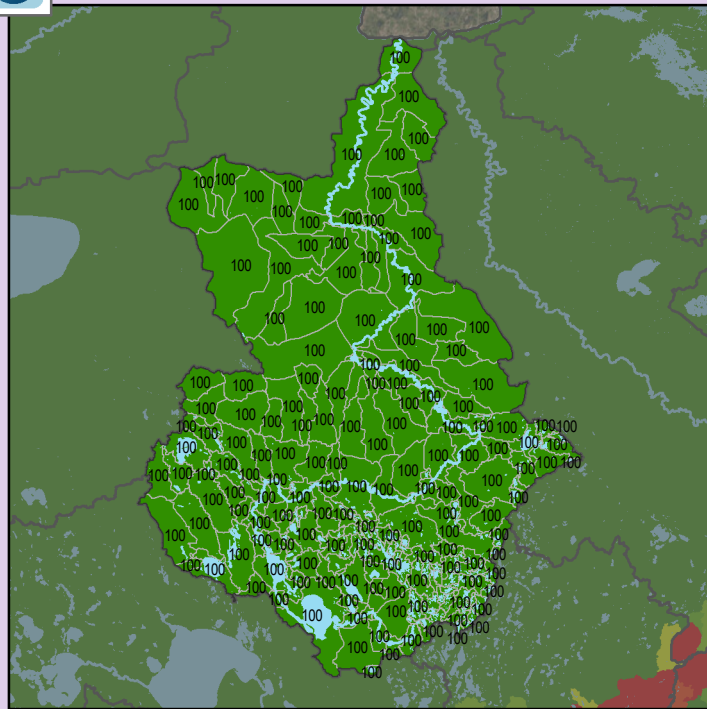


Health Score Distributions:

Big Fork River
Min: 95
Max: 100
Median: 100.0
Mean: 99.97
Standard Dev: 0.36

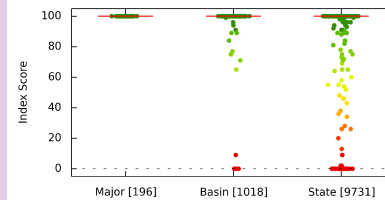


Localized Pollution Sources - Open Pit Mines

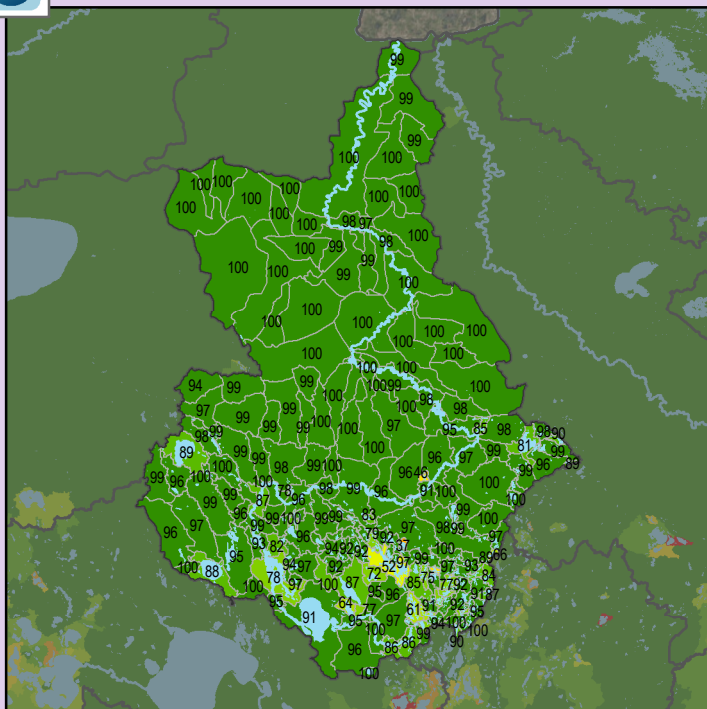


Health Score Distributions:

Big Fork River
Min: 100
Max: 100
Median: 100.0
Mean: 100.0
Standard Dev: 0.0



Localized Pollution Sources - Septic Systems



Health Score Distributions:

Big Fork River
Min: 37
Max: 100
Median: 98.0
Mean: 93.66
Standard Dev: 10.95

