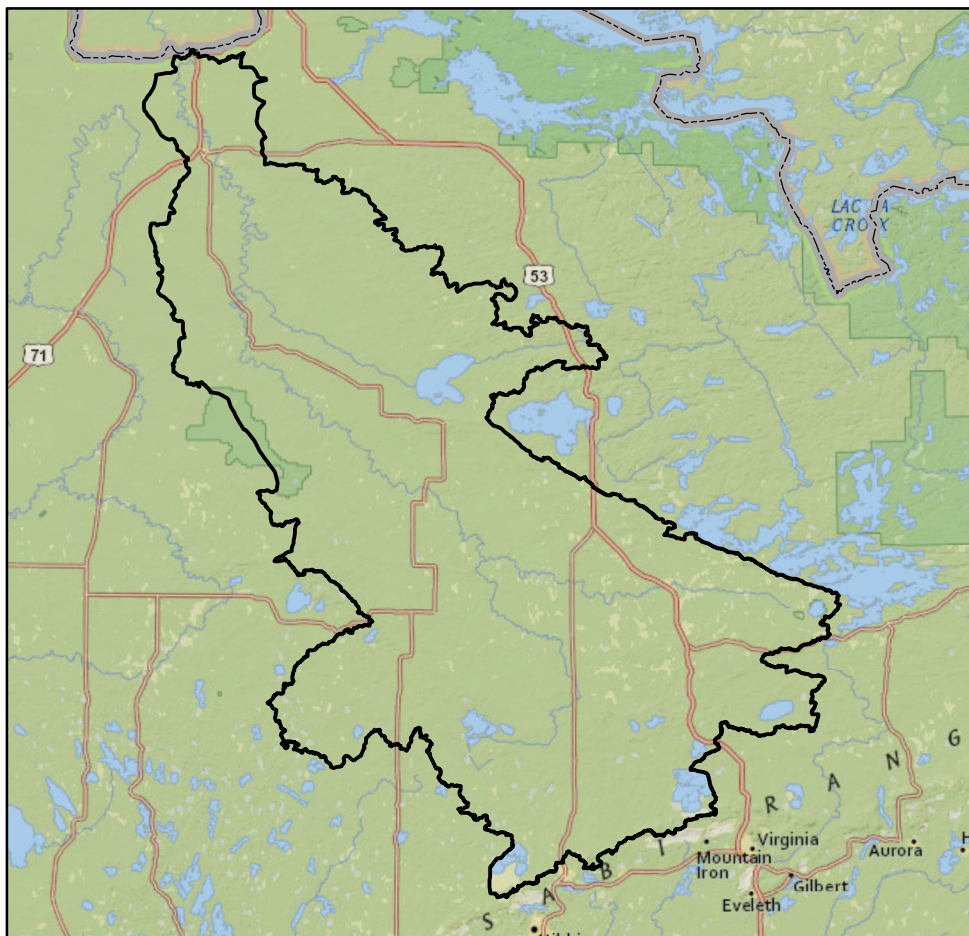
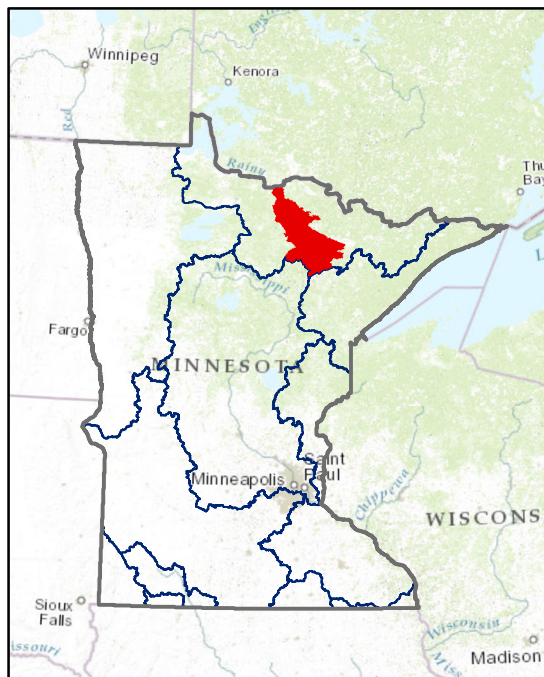


Watershed Report Card: Little Fork River



People and Places:

Watershed Population:

2000 census - 7,507
2010 census - 7,319

Largest Cities - Population:

Littlefork - 647
Cook - 574
Nett Lake - 319
Angora - 249
Linden Grove - 145

Counties - % of watershed:

St. Louis - 48 %
Koochiching - 39 %
Itasca - 12 %

Watershed Area:

Watershed size:

1,198,295 acres
1,872 square miles

Watershed Surface Area:

Percent Land - 97 %
Percent Water - 3 %

HUC8 ID:

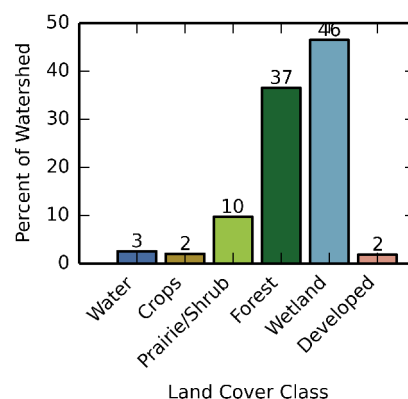
09030005

Basin Name:

Rainy River (0903)

Land Use:

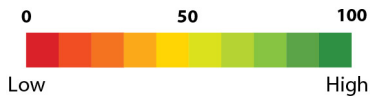
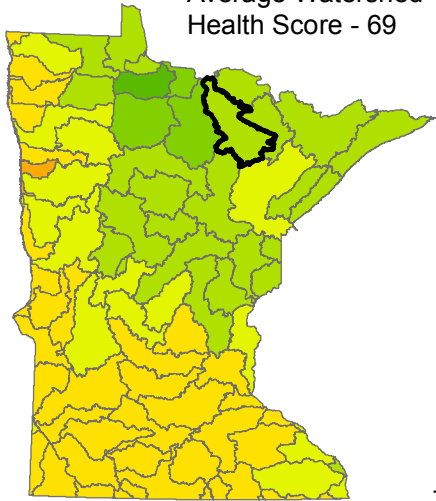
Percent of watershed area by land cover type:



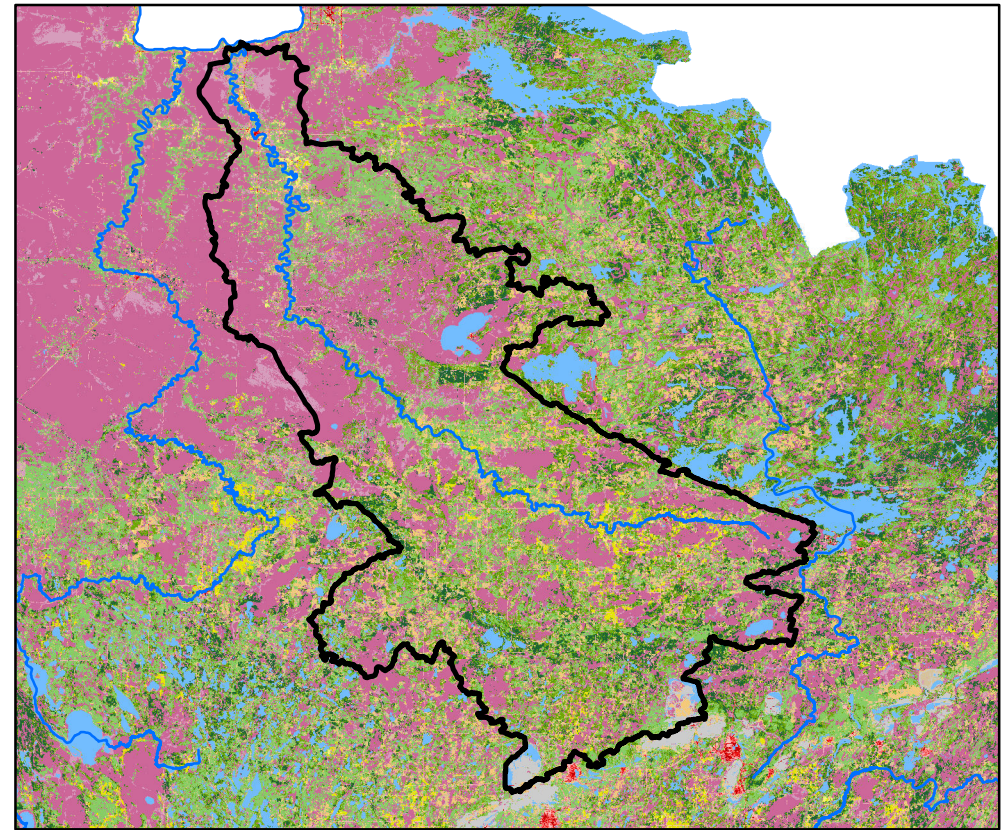
Watershed Health Report - Major Watershed

Little Fork River

Average Watershed
Health Score - 69



These health scores are calculated at the Major Watershed (HUC8) scale. Health score names followed by (*) are also calculated at the DNR Catchment scale (subdivided HUC12). Those results are reported on the following pages.



Hydrology

Component Health Score
(index average) 90

Index Scores

Perennial Cover*	97
Impervious Cover*	93
Water Withdrawal*	99
Flow Variability	60
Hydrologic Storage	93
Sub-Scores	
Altered Streams*	87
Surface Storage	99



Geomorphology

Component Health Score
(index average) 62

Index Scores

Soil Erosion Potential*	75
Groundwater Susceptibility	68
Climate Vulnerability	42



Biology

Component Health Score
(index average) 54

Index Scores

Terrestrial Habitat Quality*	46
Stream Species Quality*	77
Species Richness	59
At-Risk Species Richness	33



Connectivity

Component Health Score
(index average) 60

Index Scores

Terrestrial Habitat Connectivity	58
Aquatic Connectivity*	83
Riparian Connectivity*	98



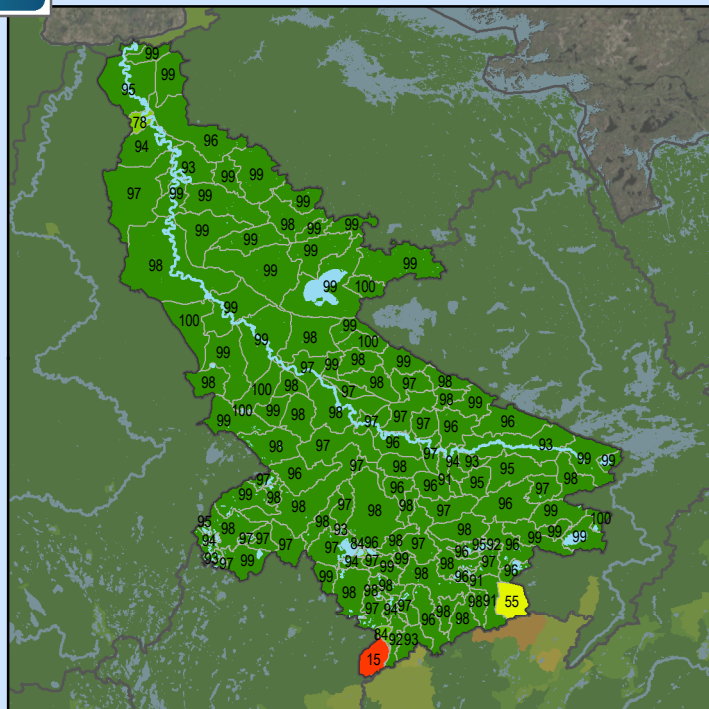
Water Quality

Component Health Score
(index average) 77

Index Scores

Non-Point Pollution Sources	93
Sub-Score	
Phosphorus Risk*	93
Localized Pollution Sources*	98
Assessments	38

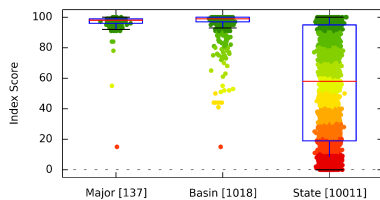
Perennial Cover (2011)



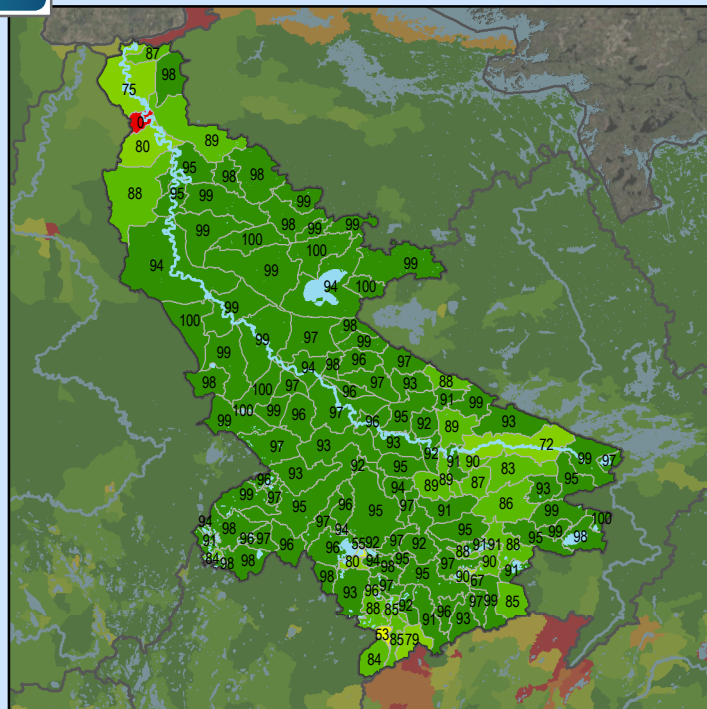
Health Score Distributions:

Little Fork River

Min: 15
Max: 100
Median: 98.0
Mean: 95.93
Standard Dev: 8.38



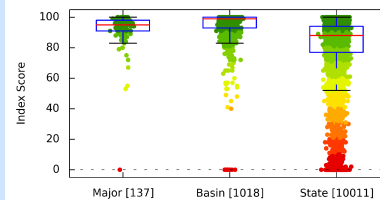
Impervious Cover (2011)



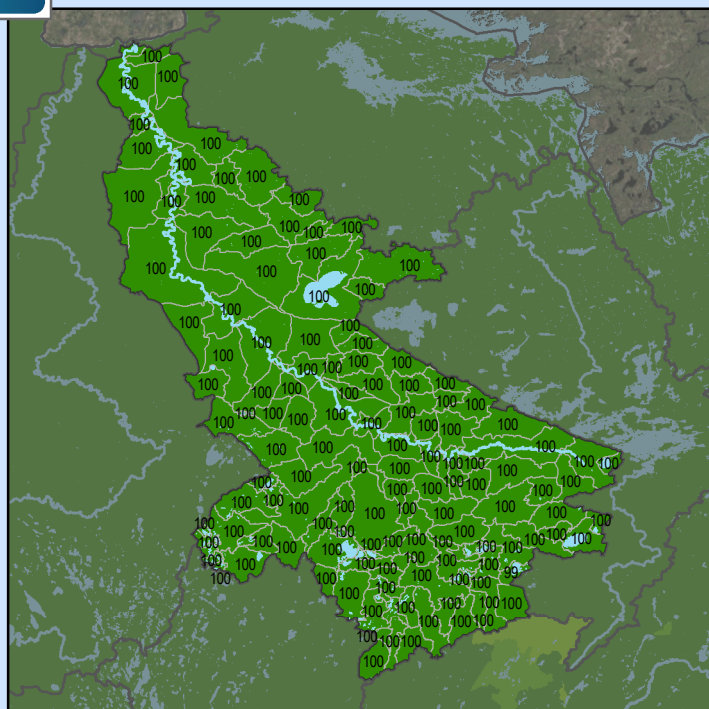
Health Score Distributions:

Little Fork River

Min: 0
Max: 100
Median: 95.0
Mean: 92.47
Standard Dev: 10.88



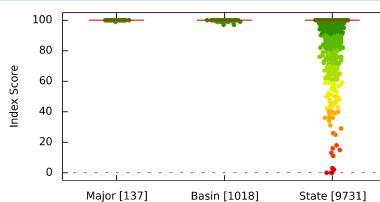
Water Withdrawal Index



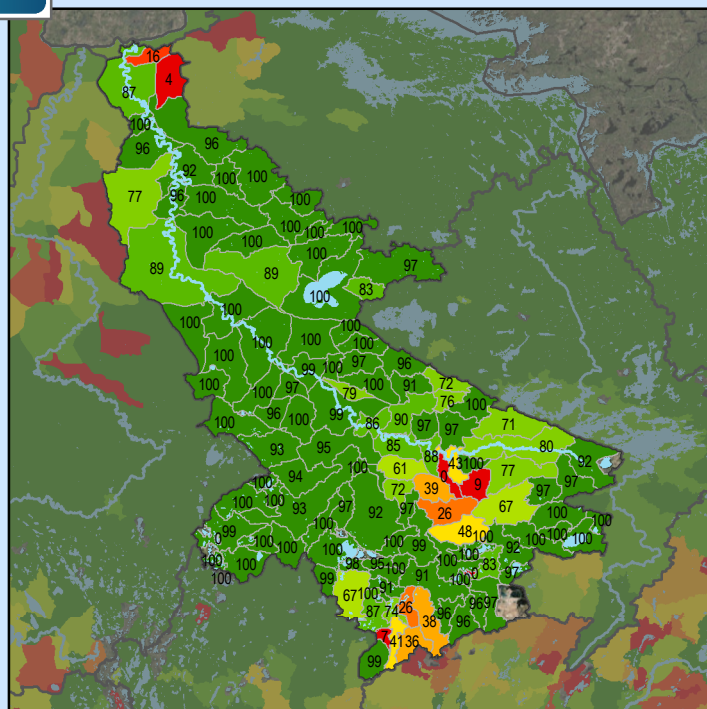
Health Score Distributions:

Little Fork River

Min: 99
Max: 100
Median: 100.0
Mean: 99.99
Standard Dev: 0.09



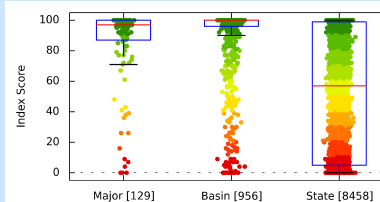
Altered Streams



Health Score Distributions:

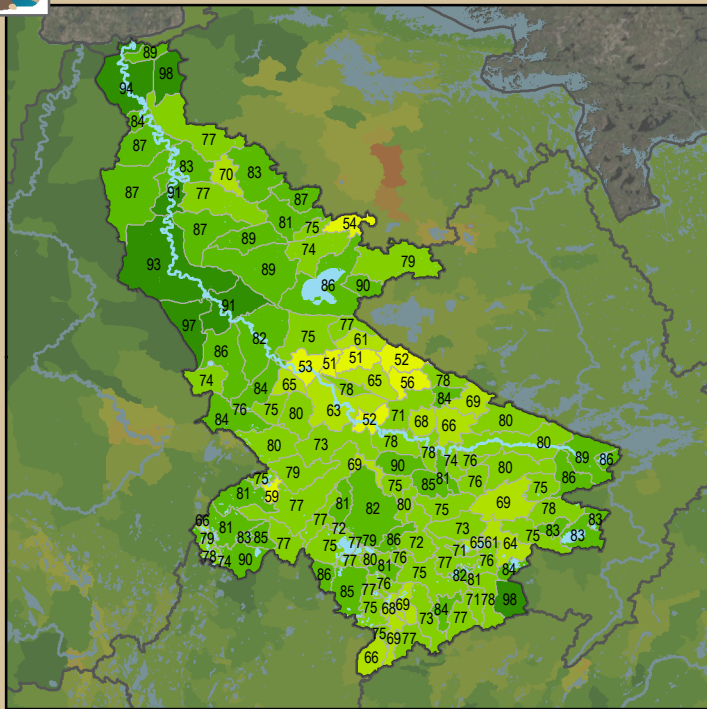
Little Fork River

Min: 0
Max: 100
Median: 97.0
Mean: 86.07
Standard Dev: 25.26





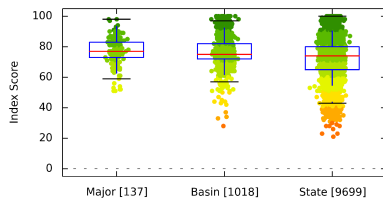
Soil Erosion Potential



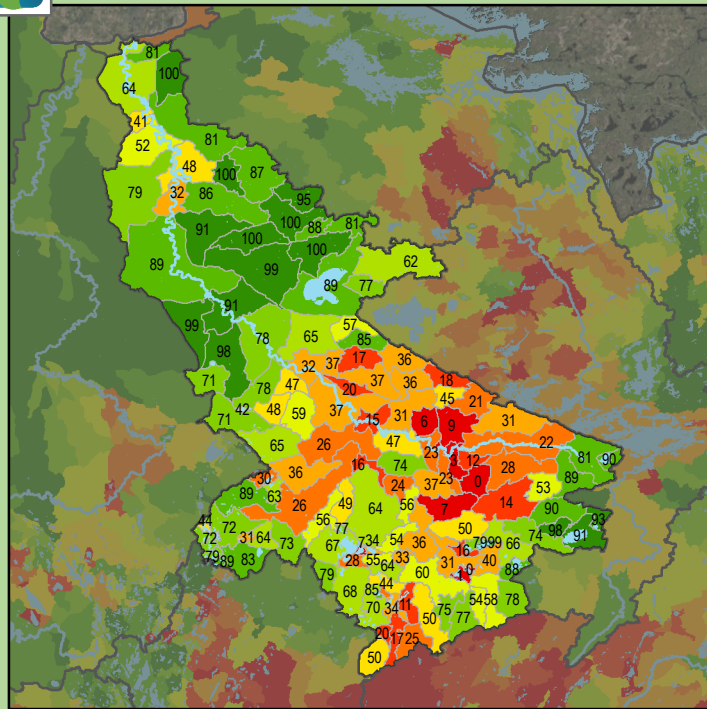
Health Score Distributions:

Little Fork River

Min: 51
Max: 98
Median: 77.0
Mean: 77.12
Standard Dev: 9.42



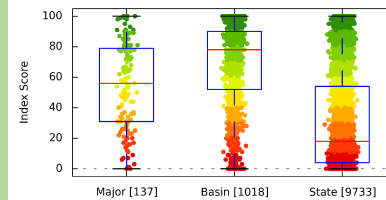
Terrestrial Habitat Quality



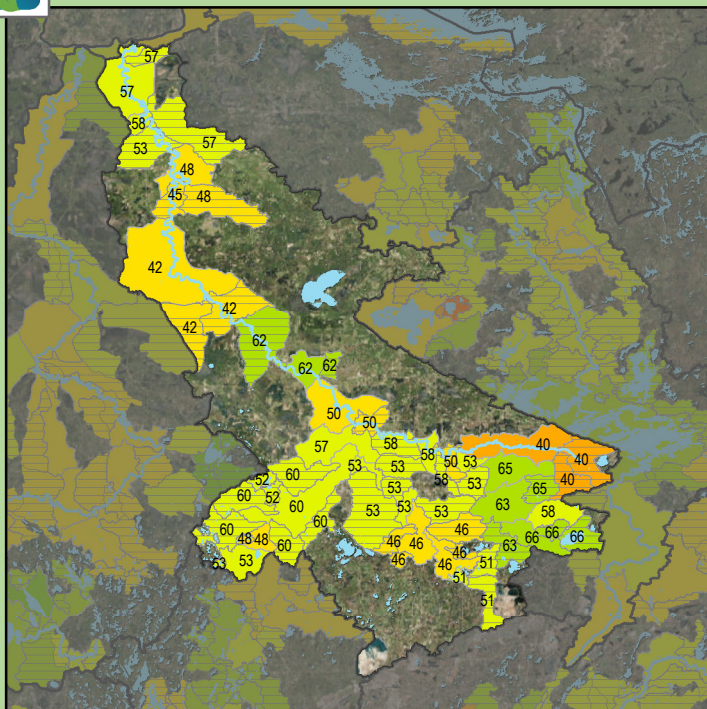
Health Score Distributions:

Little Fork River

Min: 0
Max: 100
Median: 56.0
Mean: 54.75
Standard Dev: 28.79



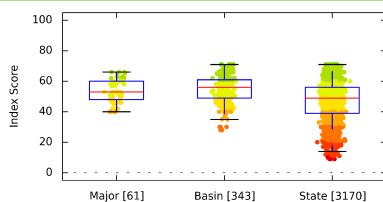
Stream Species Quality - Mussel Score



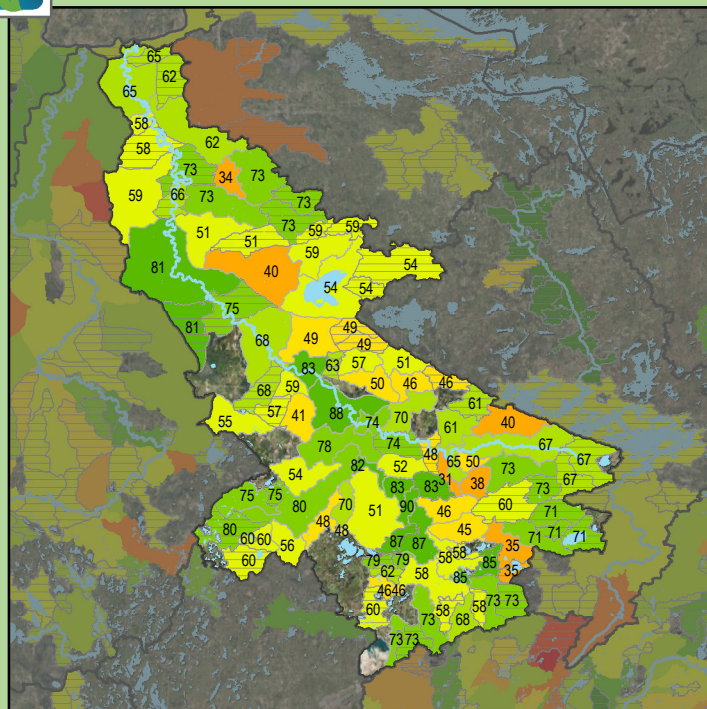
Health Score Distributions:

Little Fork River

Min: 40
Max: 66
Median: 53.0
Mean: 53.56
Standard Dev: 7.1



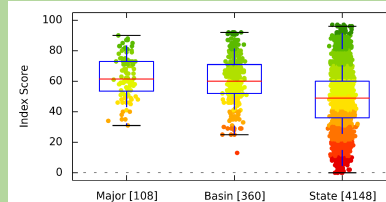
Stream Species Quality - Aquatic Invertebrate IBI



Health Score Distributions:

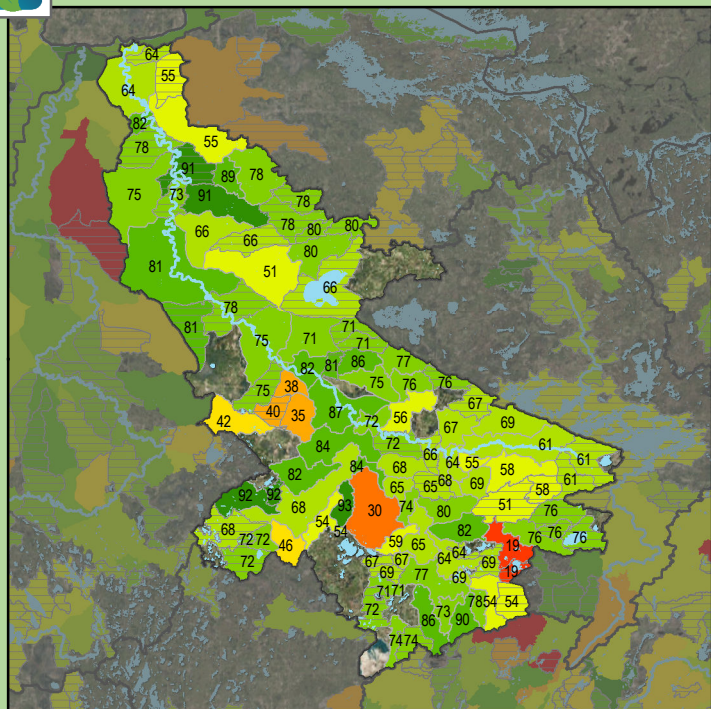
Little Fork River

Min: 31
Max: 90
Median: 61.5
Mean: 62.77
Standard Dev: 13.56





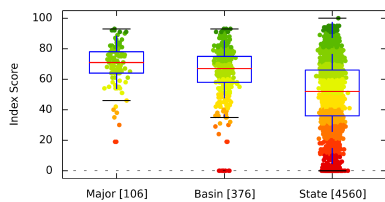
Stream Species Quality - Fish IBI



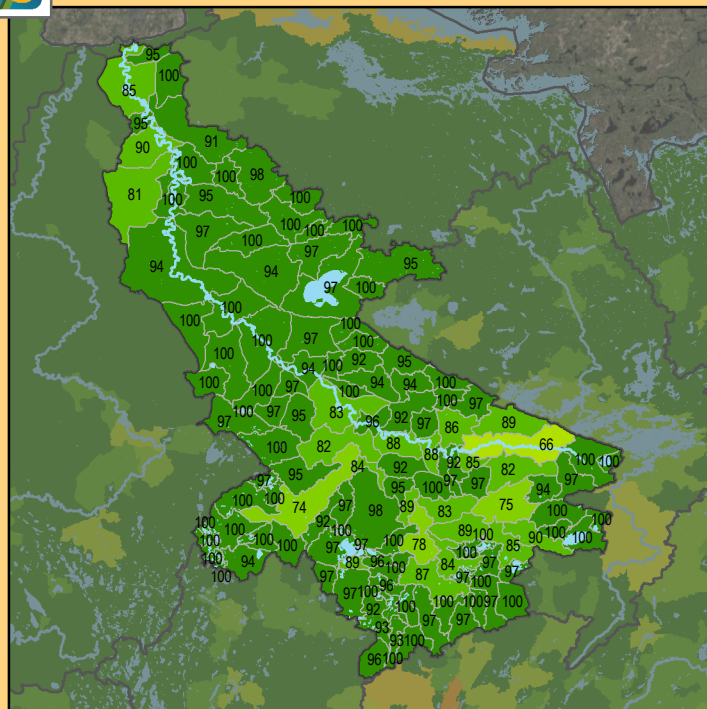
Health Score Distributions:

Little Fork River

Min: 19
Max: 93
Median: 71.0
Mean: 69.05
Standard Dev: 14.22



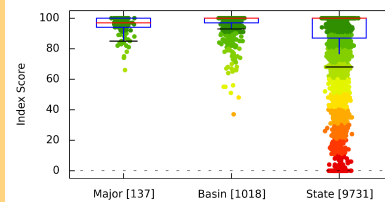
Aquatic Connectivity



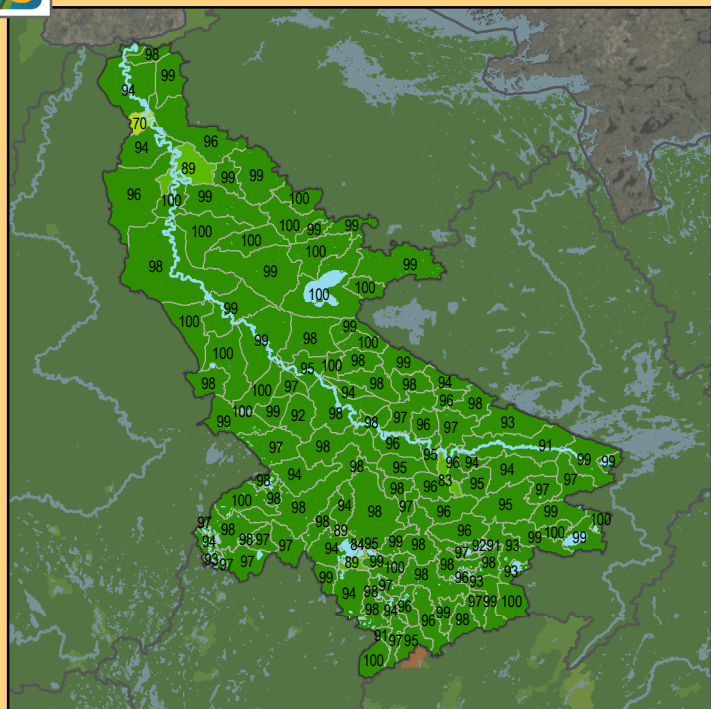
Health Score Distributions:

Little Fork River

Min: 66
Max: 100
Median: 97.0
Mean: 95.31
Standard Dev: 6.27



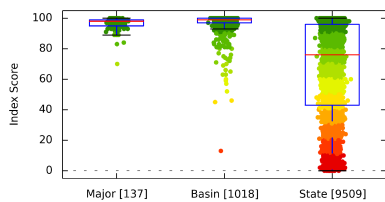
Riparian Connectivity



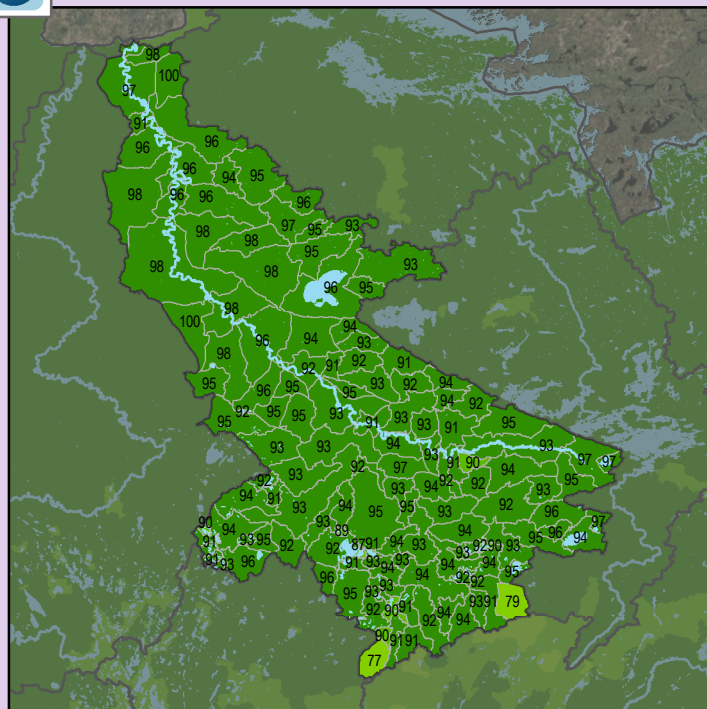
Health Score Distributions:

Little Fork River

Min: 70
Max: 100
Median: 98.0
Mean: 96.59
Standard Dev: 3.83



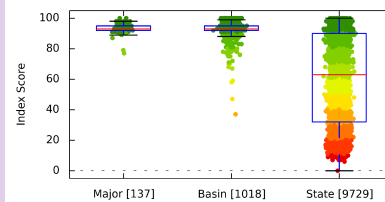
Non-Point Source - Phosphorus Risk



Health Score Distributions:

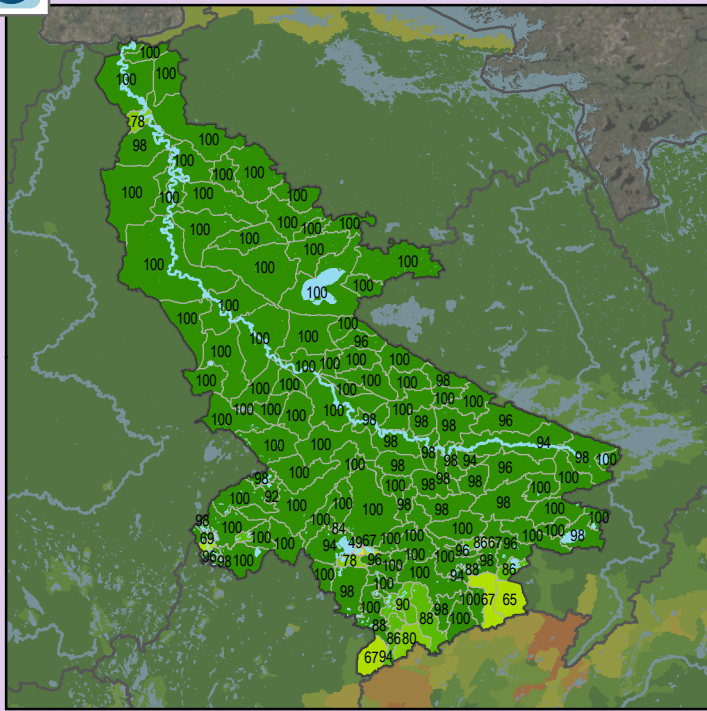
Little Fork River

Min: 77
Max: 100
Median: 93.0
Mean: 93.48
Standard Dev: 2.97



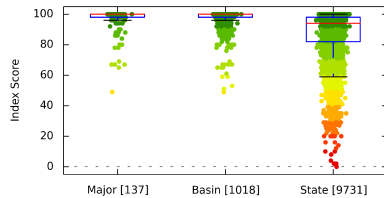


Localized Pollution Sources

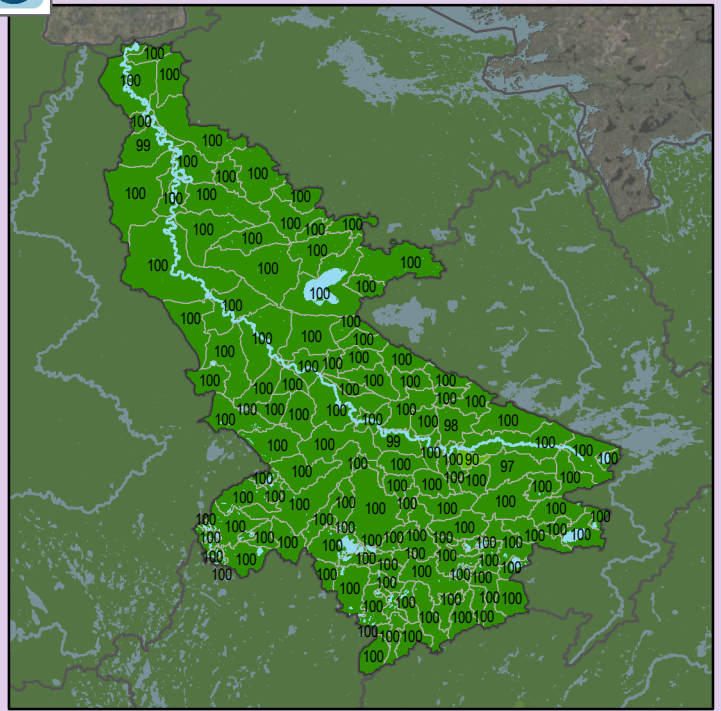


Health Score Distributions:

Little Fork River
Min: 49
Max: 100
Median: 100.0
Mean: 95.91
Standard Dev: 8.77

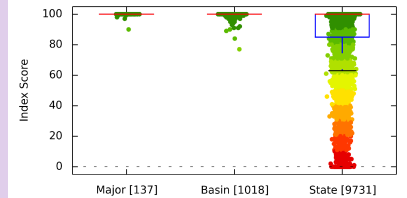


Localized Pollution Sources - Animal Units

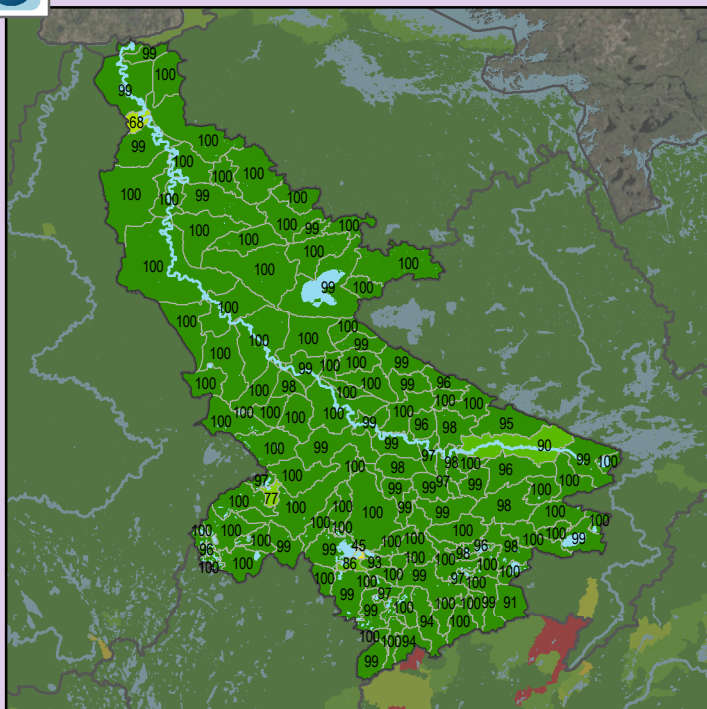


Health Score Distributions:

Little Fork River
Min: 90
Max: 100
Median: 100.0
Mean: 99.88
Standard Dev: 0.91

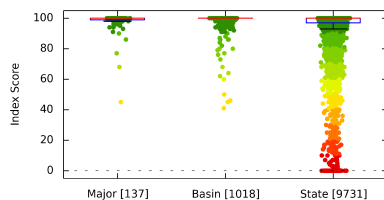


Localized Pollution Sources - Potential Contaminants

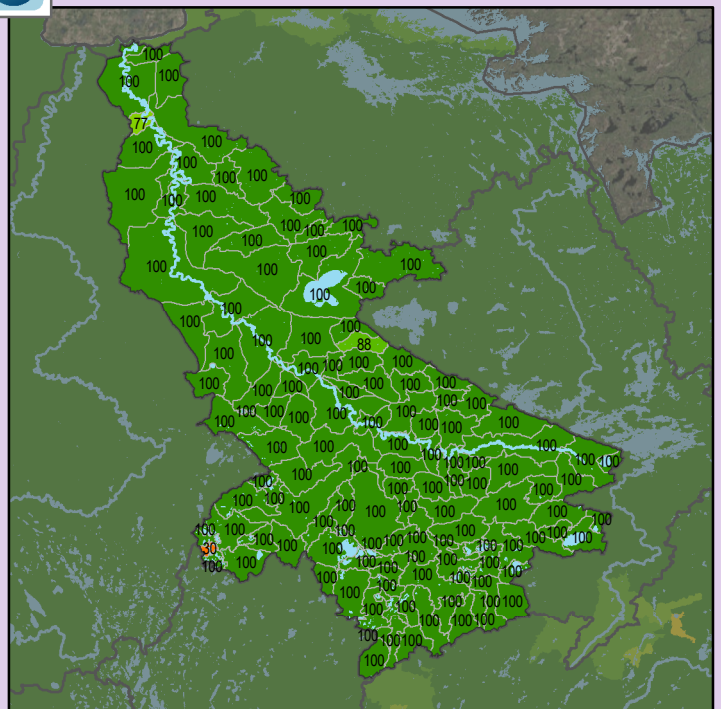


Health Score Distributions:

Little Fork River
Min: 45
Max: 100
Median: 100.0
Mean: 98.23
Standard Dev: 5.95

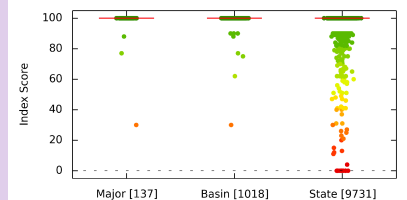


Localized Pollution Sources - Superfund Sites



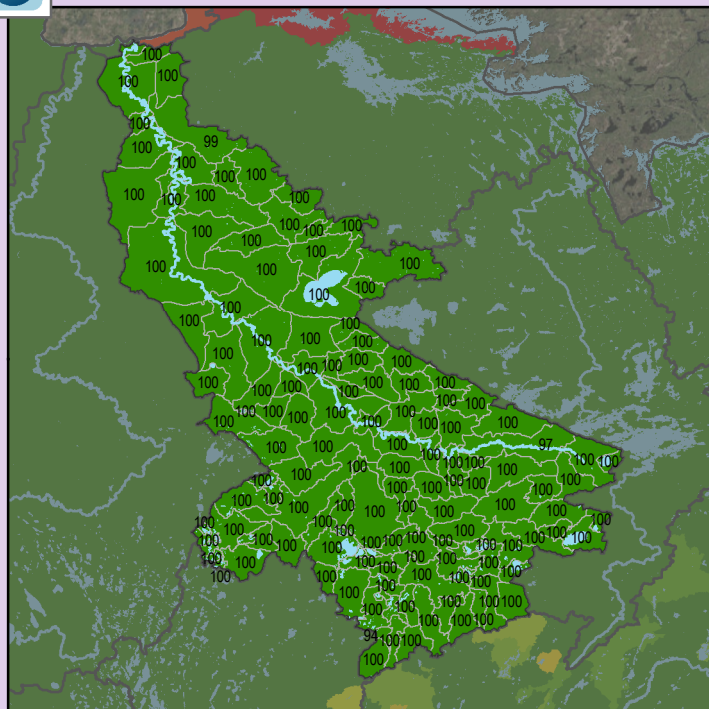
Health Score Distributions:

Little Fork River
Min: 30
Max: 100
Median: 100.0
Mean: 99.23
Standard Dev: 6.33



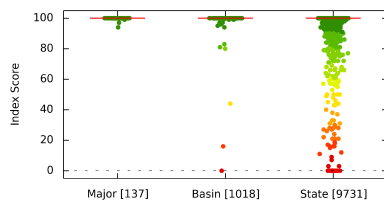


Localized Pollution Sources - Wastewater Treatment

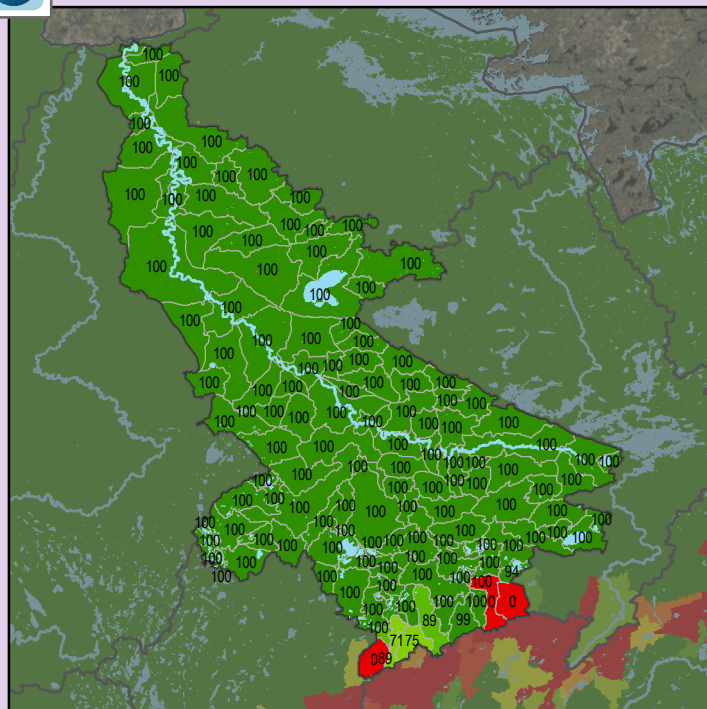


Health Score Distributions:

Little Fork River
Min: 94
Max: 100
Median: 100.0
Mean: 99.93
Standard Dev: 0.57

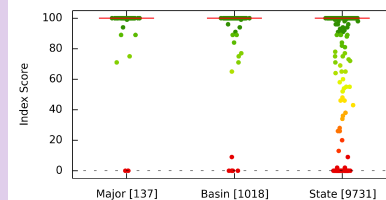


Localized Pollution Sources - Open Pit Mines

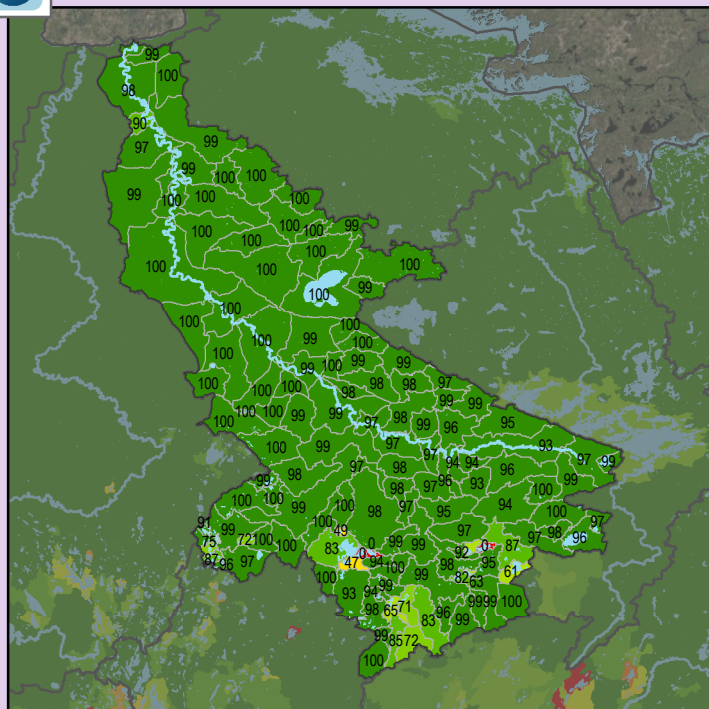


Health Score Distributions:

Little Fork River
Min: 0
Max: 100
Median: 100.0
Mean: 97.2
Standard Dev: 14.96



Localized Pollution Sources - Septic Systems



Health Score Distributions:

Little Fork River
Min: 0
Max: 100
Median: 99.0
Mean: 92.52
Standard Dev: 17.58

