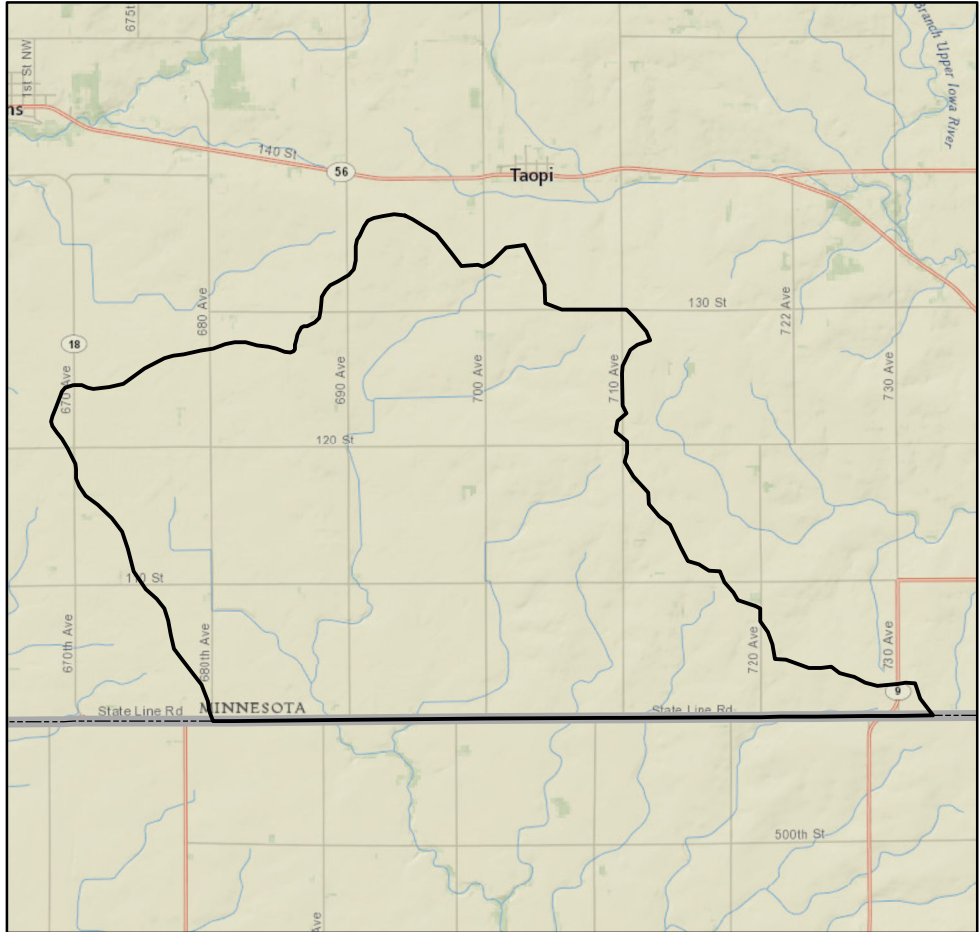




Watershed Report Card: **Wapsipinicon River**



People and Places:

Watershed Population:

2000 census - 80
 2010 census - 68

Largest Cities - Population:

None

Counties - % of watershed:

Mower - 100 %

Watershed Area:

Watershed size:

8,264 acres
 13 square miles

Watershed Surface Area:

Percent Land - 100 %
 Percent Water - 0 %

HUC8 ID:

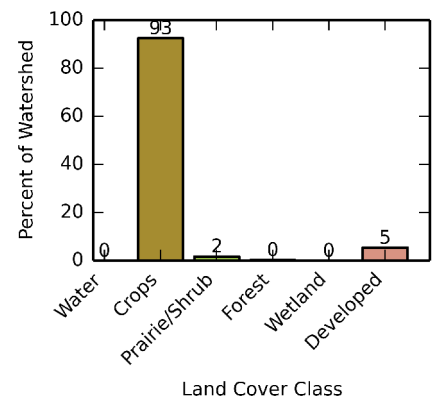
07080102

Basin Name:

Upper Mississippi -
 Iowa/Skunk/Wapsipinicon (0708)

Land Use:

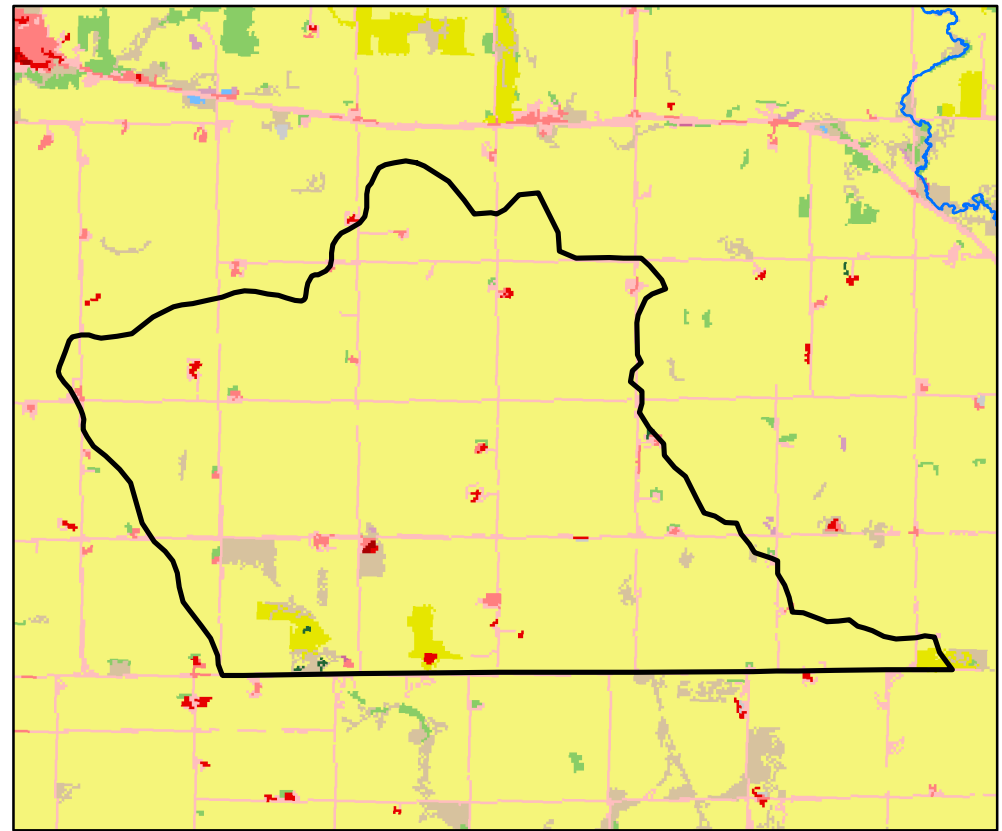
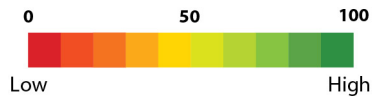
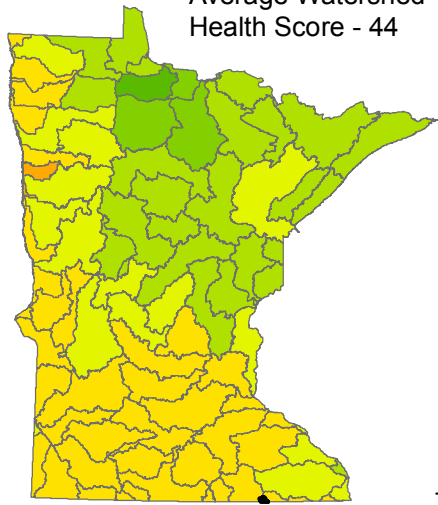
**Percent of watershed area
 by land cover type:**



Watershed Health Report - Major Watershed

Wapsipinicon River

Average Watershed Health Score - 44



These health scores are calculated at the Major Watershed (HUC8) scale. Health score names followed by (*) are also calculated at the DNR Catchment scale (subdivided HUC12). Those results are reported on the following pages.



Hydrology

Component Health Score (index average) 53

Index Scores

Perennial Cover*	3
Impervious Cover*	86
Water Withdrawal*	100
Flow Variability	74
Hydrologic Storage	20
Sub-Scores	
Altered Streams*	29
Surface Storage	11



Geomorphology

Component Health Score (index average) 48

Index Scores

Soil Erosion Potential*	72
Groundwater Susceptibility	25
Climate Vulnerability	48



Biology

Component Health Score (index average) 46

Index Scores

Terrestrial Habitat Quality*	0
Stream Species Quality*	70
Species Richness	67
At-Risk Species Richness	46



Connectivity

Component Health Score (index average) 34

Index Scores

Terrestrial Habitat Connectivity	1
Aquatic Connectivity*	0
Riparian Connectivity*	43



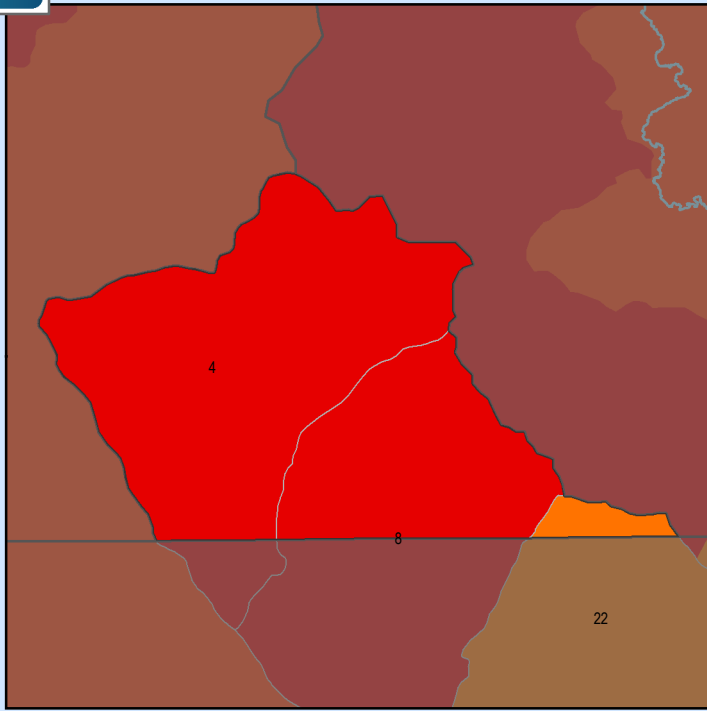
Water Quality

Component Health Score (index average) 39

Index Scores

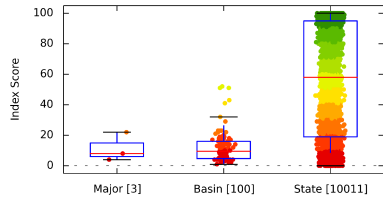
Non-Point Pollution Sources	25
Sub-Score	
Phosphorus Risk*	0
Localized Pollution Sources*	70
Assessments	12

Perennial Cover (2011)

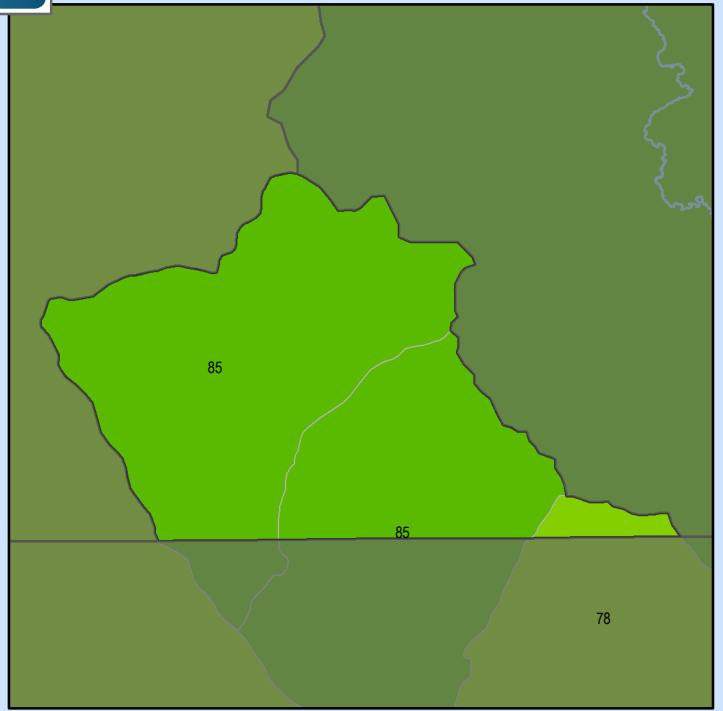


Health Score Distributions:

Wapsipinicon River
 Min: 4
 Max: 22
 Median: 8.0
 Mean: 11.33
 Standard Dev: 7.72

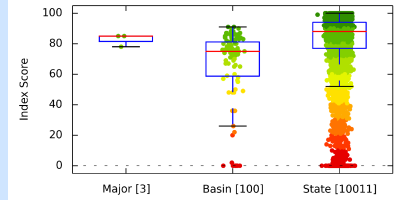


Impervious Cover (2011)

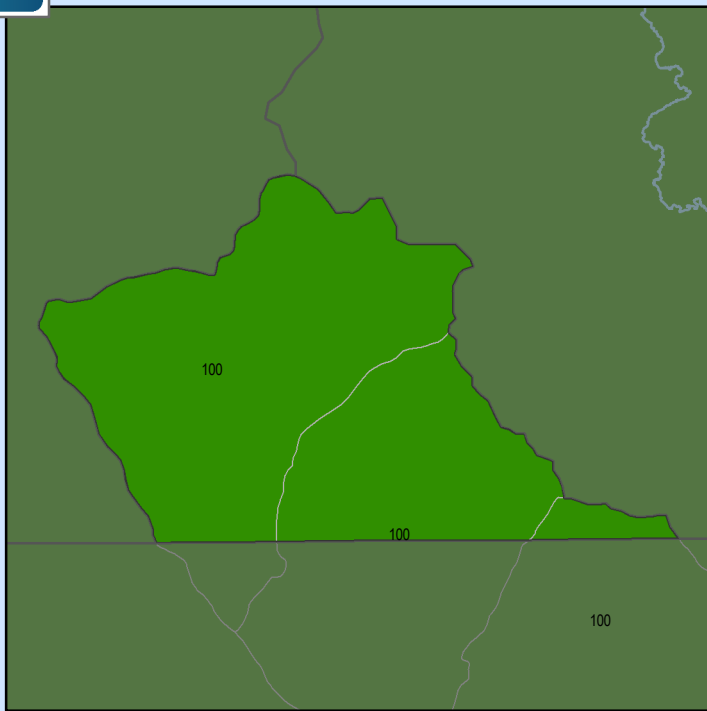


Health Score Distributions:

Wapsipinicon River
 Min: 78
 Max: 85
 Median: 85.0
 Mean: 82.67
 Standard Dev: 3.3

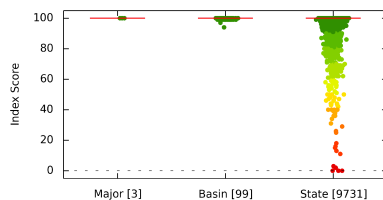


Water Withdrawal Index

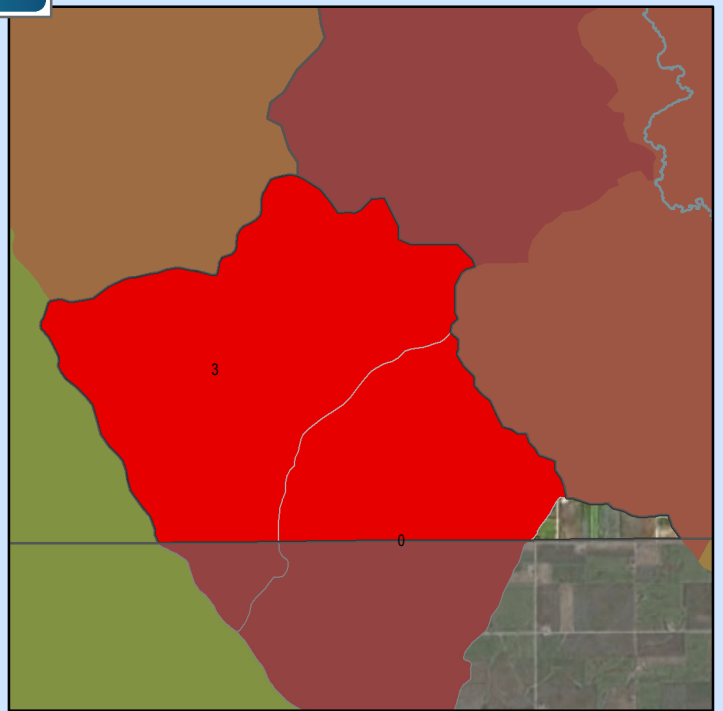


Health Score Distributions:

Wapsipinicon River
 Min: 100
 Max: 100
 Median: 100.0
 Mean: 100.0
 Standard Dev: 0.0

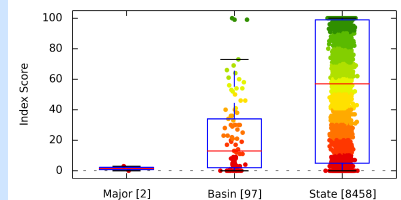


Altered Streams



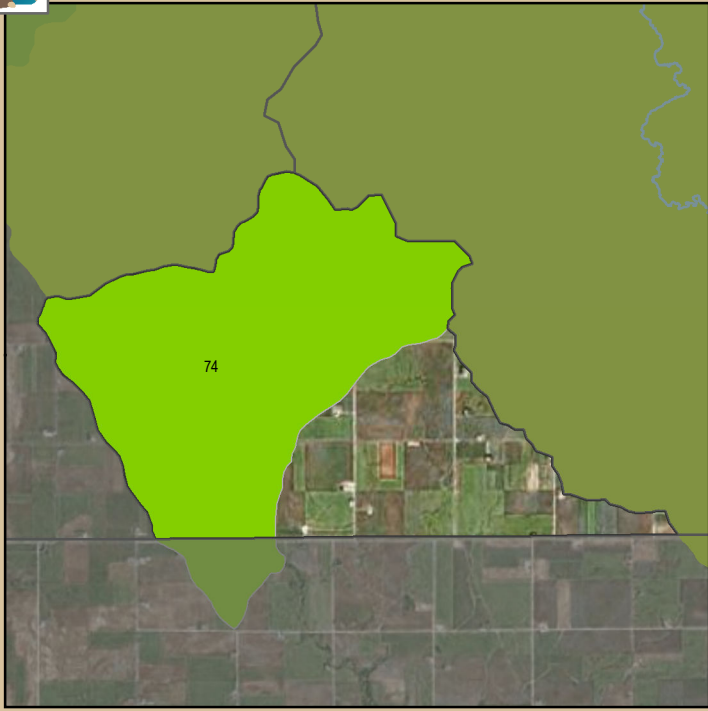
Health Score Distributions:

Wapsipinicon River
 Min: 0
 Max: 3
 Median: 1.5
 Mean: 1.5
 Standard Dev: 1.5





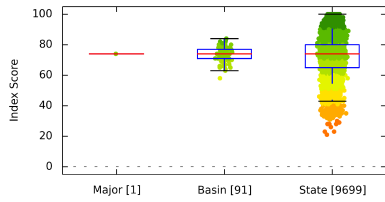
Soil Erosion Potential



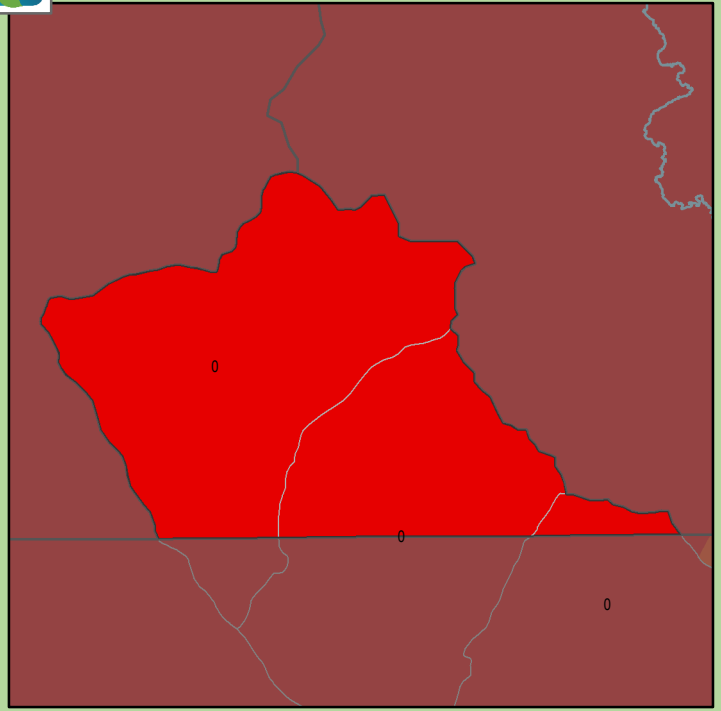
Health Score Distributions:

Wapsipinicon River

Min: 74
Max: 74
Median: 74.0
Mean: 74.0
Standard Dev: 0.0



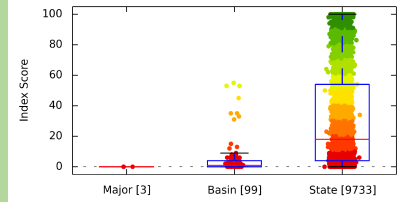
Terrestrial Habitat Quality



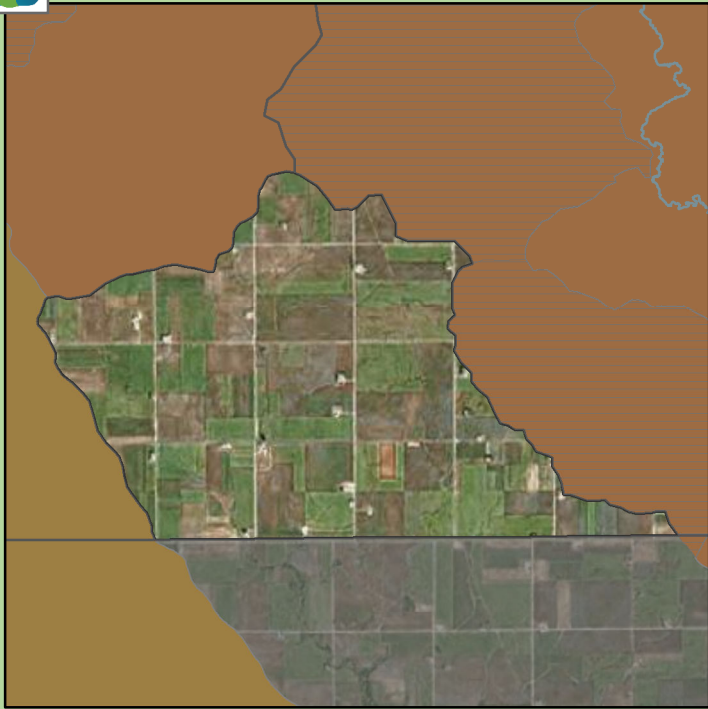
Health Score Distributions:

Wapsipinicon River

Min: 0
Max: 0
Median: 0.0
Mean: 0.0
Standard Dev: 0.0



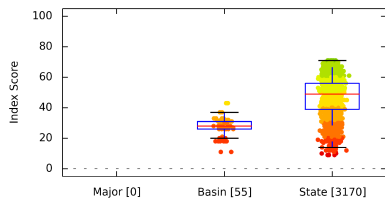
Stream Species Quality - Mussel Score



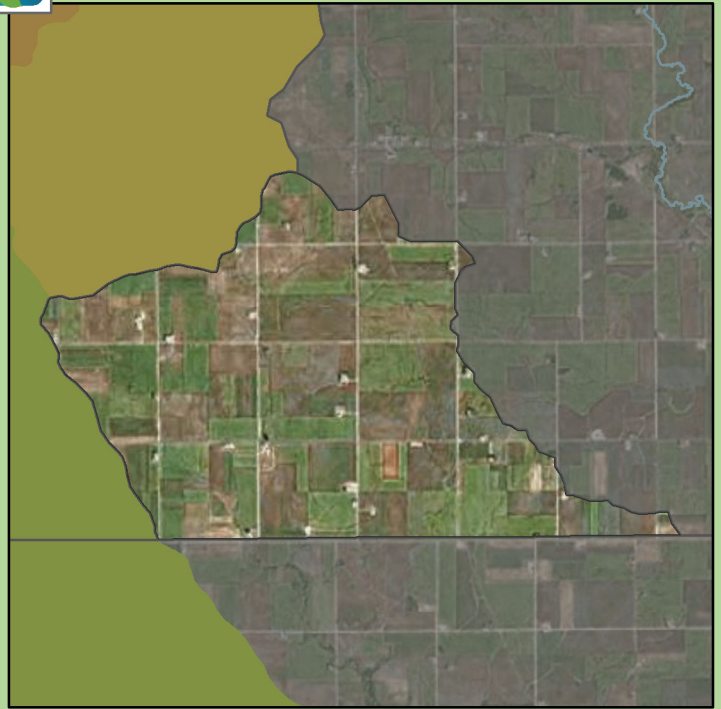
Health Score Distributions:

Wapsipinicon River

Min: NA
Max: NA
Median: NA
Mean: NA
Standard Dev: NA



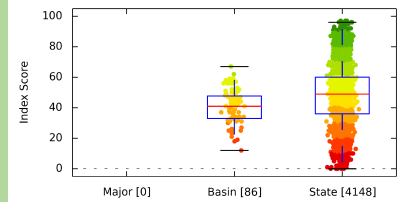
Stream Species Quality - Aquatic Invertebrate IBI



Health Score Distributions:

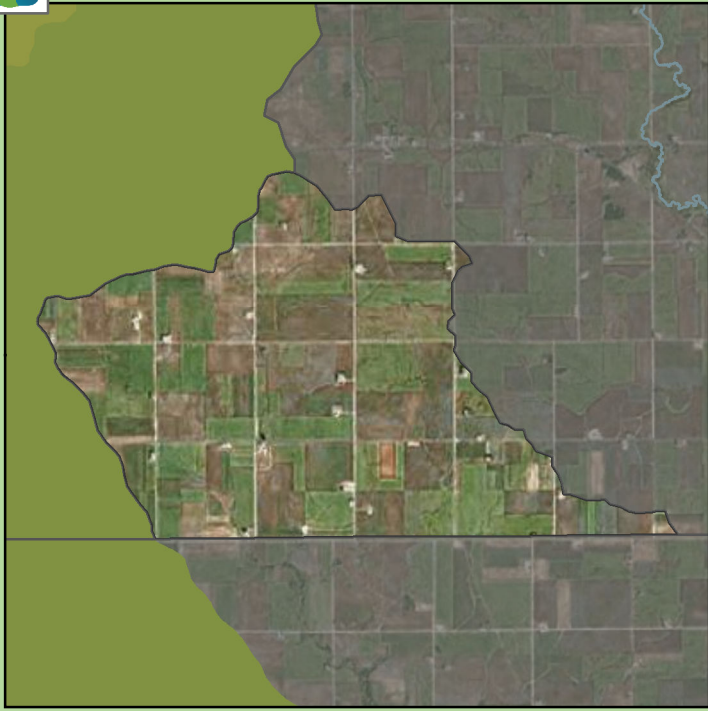
Wapsipinicon River

Min: NA
Max: NA
Median: NA
Mean: NA
Standard Dev: NA



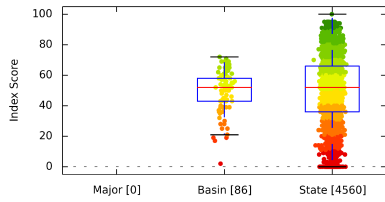


Stream Species Quality - Fish IBI

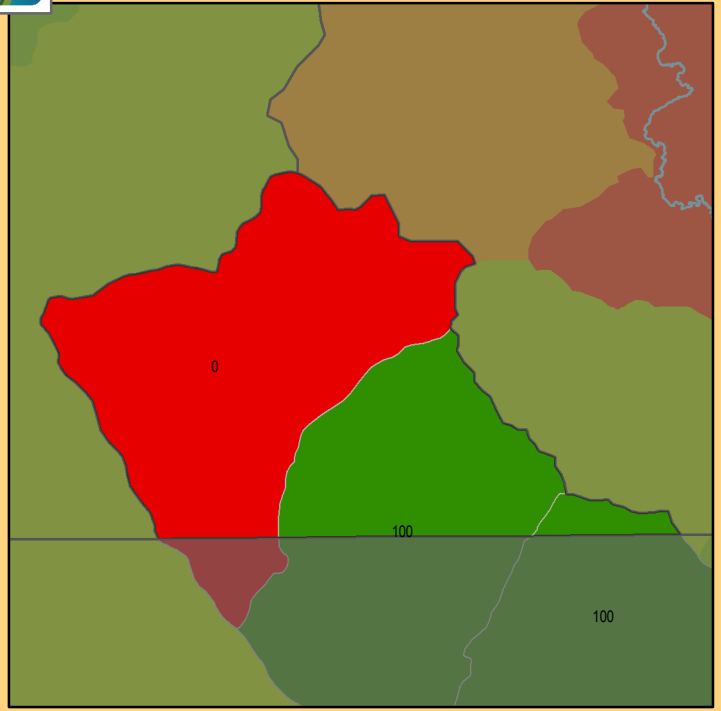


Health Score Distributions:

Wapsipinicon River
Min: NA
Max: NA
Median: NA
Mean: NA
Standard Dev: NA

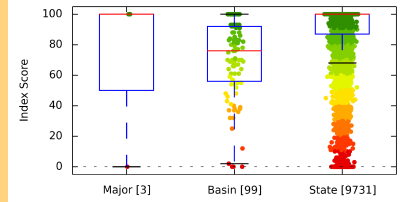


Aquatic Connectivity

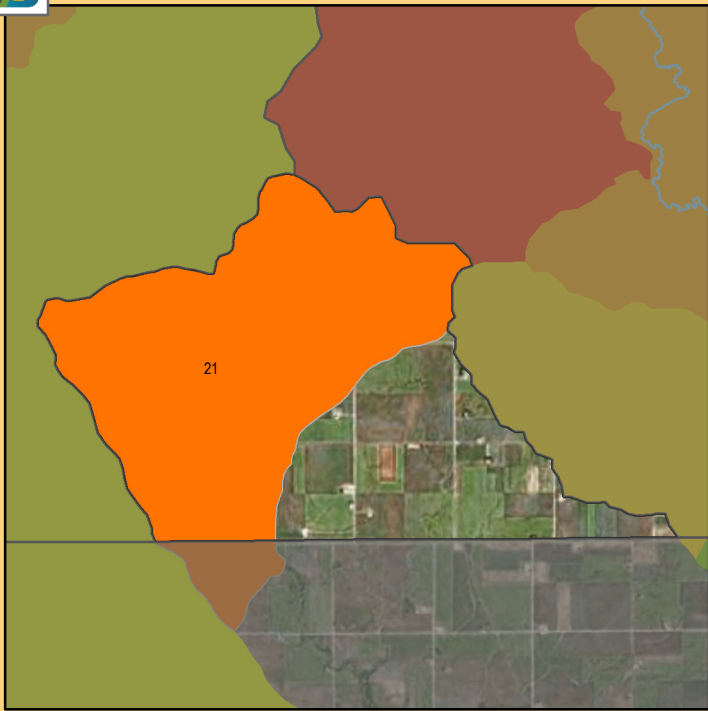


Health Score Distributions:

Wapsipinicon River
Min: 0
Max: 100
Median: 100.0
Mean: 66.67
Standard Dev: 47.14

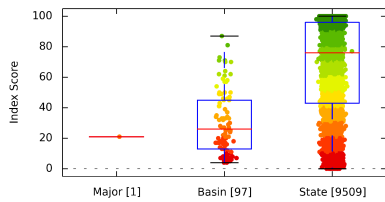


Riparian Connectivity

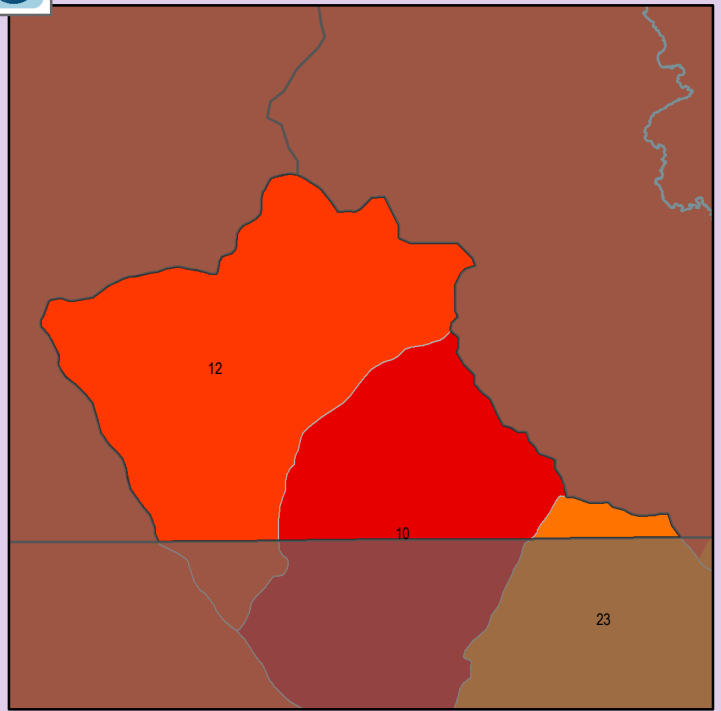


Health Score Distributions:

Wapsipinicon River
Min: 21
Max: 21
Median: 21.0
Mean: 21.0
Standard Dev: 0.0

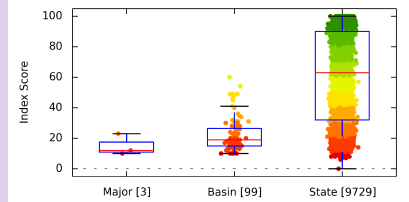


Non-Point Source - Phosphorus Risk



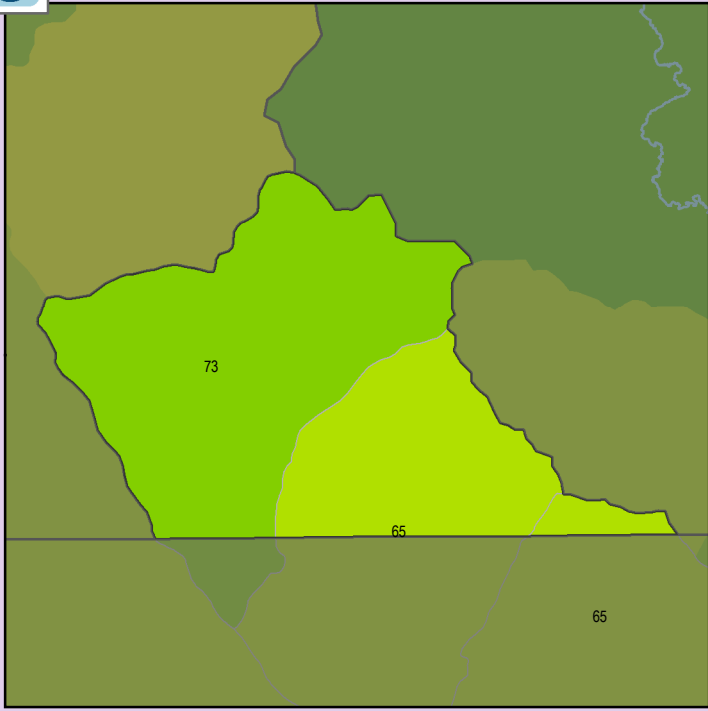
Health Score Distributions:

Wapsipinicon River
Min: 10
Max: 23
Median: 12.0
Mean: 15.0
Standard Dev: 5.72



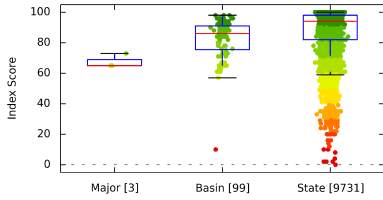


Localized Pollution Sources

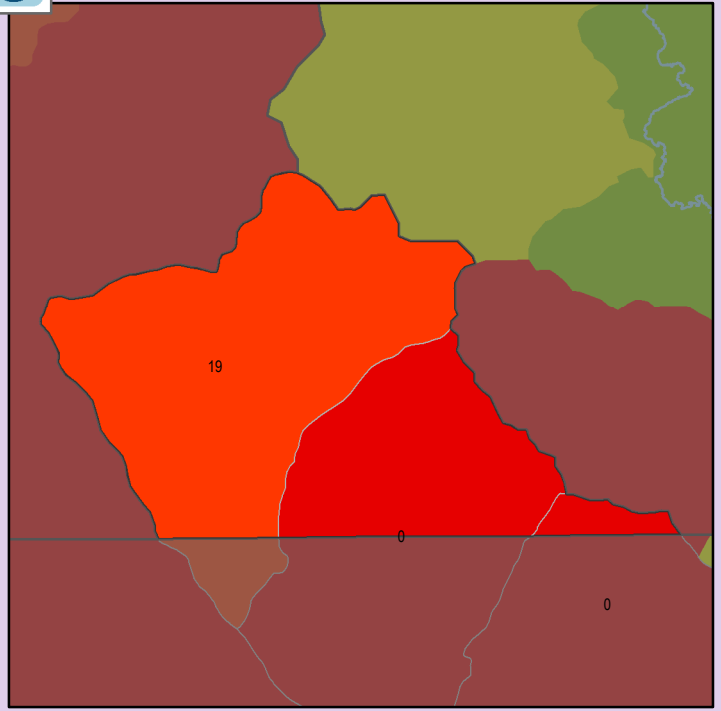


Health Score Distributions:

Wapsipinicon River
 Min: 65
 Max: 73
 Median: 65.0
 Mean: 67.67
 Standard Dev: 3.77

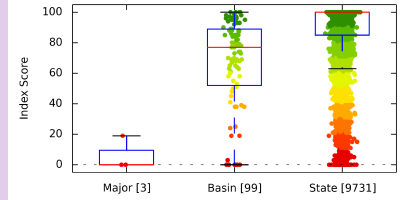


Localized Pollution Sources - Animal Units

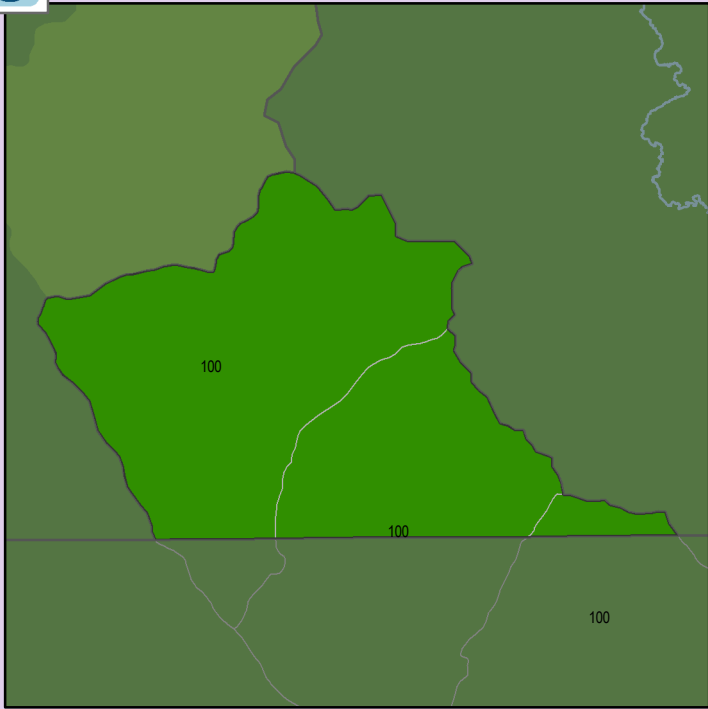


Health Score Distributions:

Wapsipinicon River
 Min: 0
 Max: 19
 Median: 0.0
 Mean: 6.33
 Standard Dev: 8.96

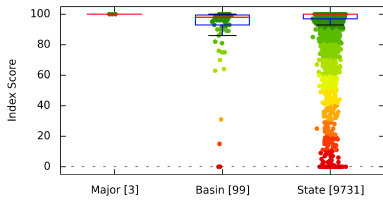


Localized Pollution Sources - Potential Contaminants

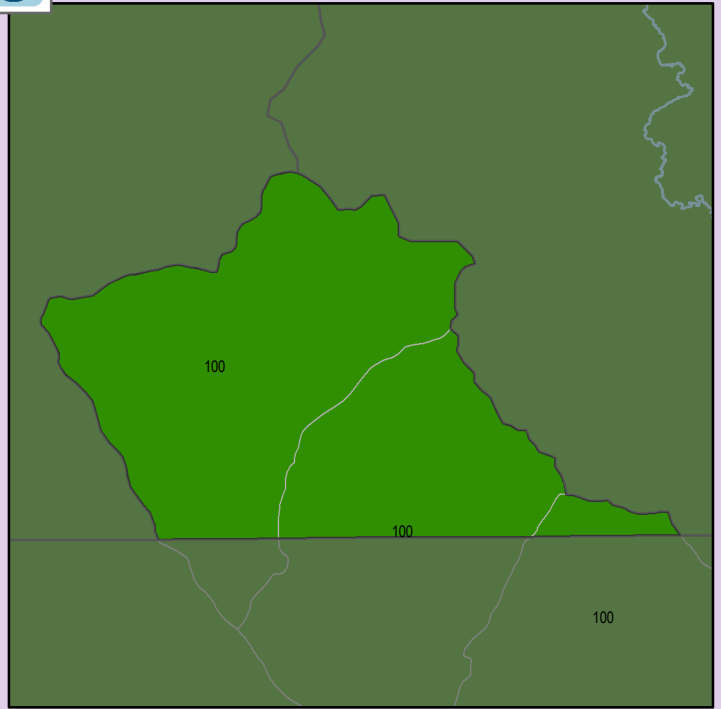


Health Score Distributions:

Wapsipinicon River
 Min: 100
 Max: 100
 Median: 100.0
 Mean: 100.0
 Standard Dev: 0.0

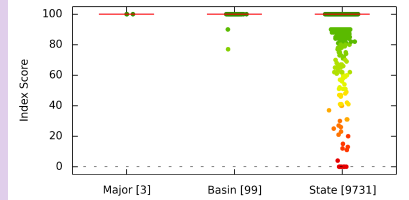


Localized Pollution Sources - Superfund Sites



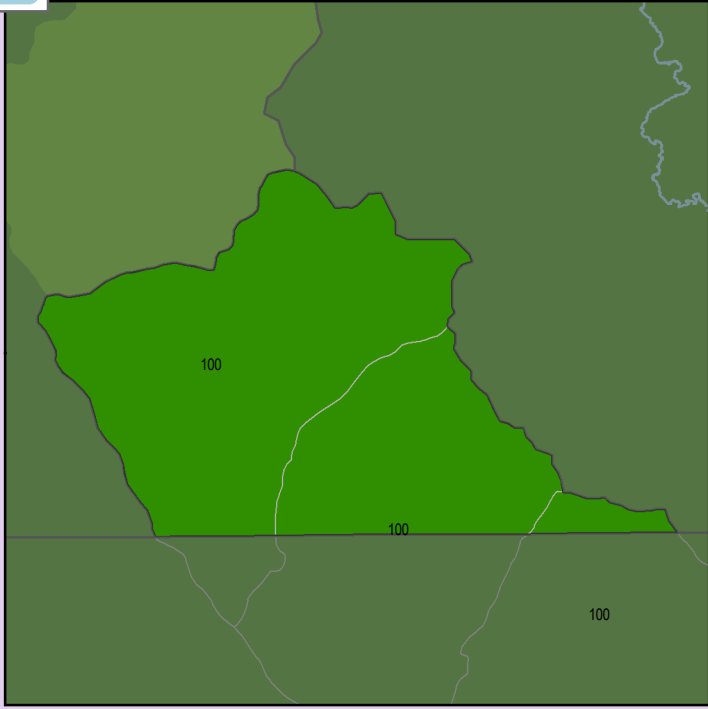
Health Score Distributions:

Wapsipinicon River
 Min: 100
 Max: 100
 Median: 100.0
 Mean: 100.0
 Standard Dev: 0.0





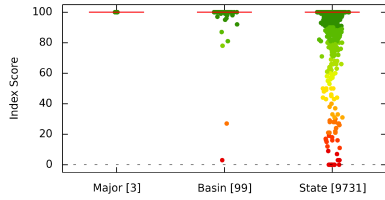
Localized Pollution Sources - Wastewater Treatment



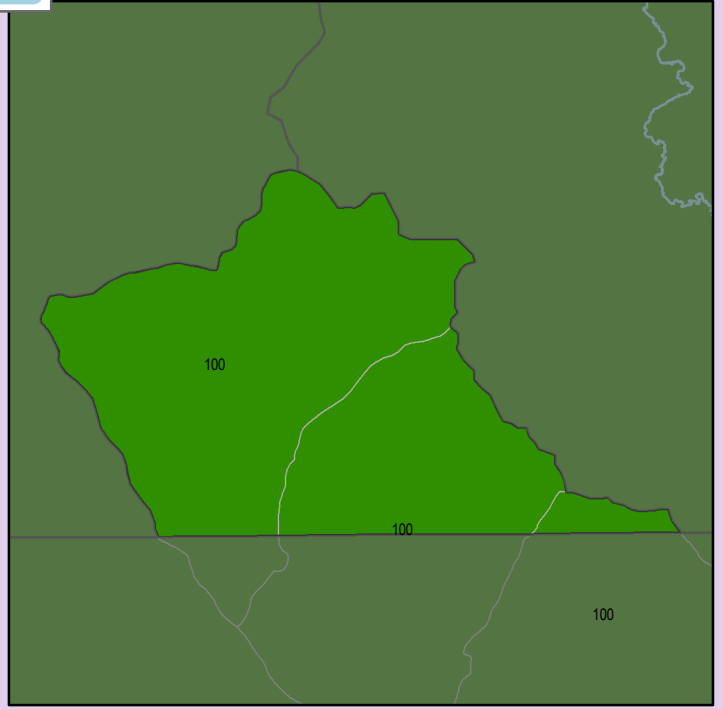
Health Score Distributions:

Wapsipinicon River

Min: 100
Max: 100
Median: 100.0
Mean: 100.0
Standard Dev: 0.0



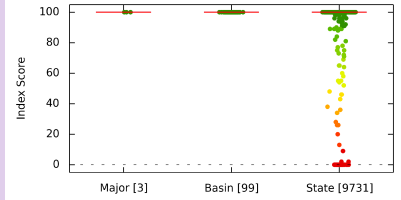
Localized Pollution Sources - Open Pit Mines



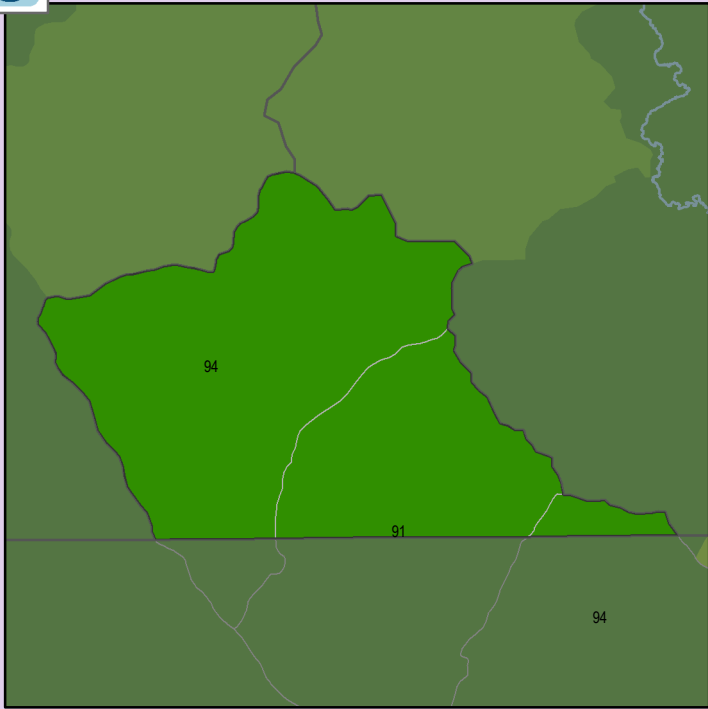
Health Score Distributions:

Wapsipinicon River

Min: 100
Max: 100
Median: 100.0
Mean: 100.0
Standard Dev: 0.0



Localized Pollution Sources - Septic Systems



Health Score Distributions:

Wapsipinicon River

Min: 91
Max: 94
Median: 94.0
Mean: 93.0
Standard Dev: 1.41

