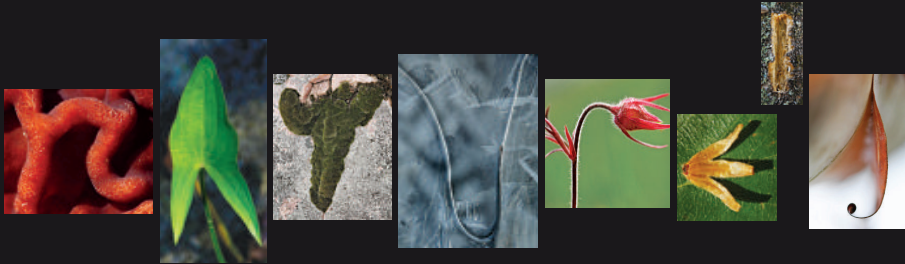


Photography by Joe Rossi



Where is **A**? Where is **Z**? Under a rock? In a tree? Go outside and see.

AlphabeT

Young
Naturalists



A fallen tree covered with moss shows the shape of the letter A, in Cloquet Valley State Forest near Cotton.



Between Bemidji and Turtle River, a painted turtle crossed the road, carrying the letter **B** on its carapace.



Dead trees sprout shelf fungi like this **D** look-alike in Nerstrand Big Woods State Park.

Chippewa National Forest contains **C**-shaped antlers shed by white-tailed bucks.



Even the wind can shape a letter. Here the wind blew a reed into an easy **E** at Carlos Avery Wildlife Management Area.



Funny shapes of twigs sometimes look like letters, like this **F** in a black spruce bog in Chippewa National Forest.



GONE is the live snail, but its **G**-design shell remains on the shore of Lake Rabideau in Chippewa National Forest.



Hard frost at Lake Rabideau might have bent these rushes to form an **h**.



If you see a cattail in a marsh, you might be seeing the outline of the letter **I**.



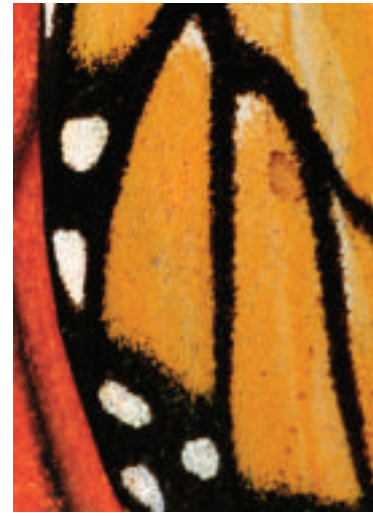
Jaws spread wide might look like **J**. On the Minnesota River near Granite Falls, this American white pelican's open bill and pouch certainly do.



K is the letter in the roots of a silver maple tree on a bank of the Mississippi River.



Look at how a monarch caterpillar on backyard milkweed resembles **L**.



Monarch butterfly wings have the mark of **M**.



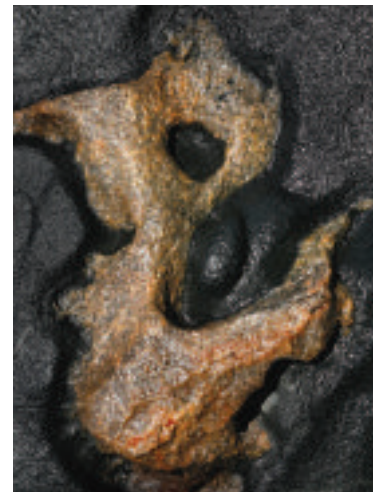
Nobody knows when a squirrel will flick its tail into an outline of a letter like a little **n**.



On a stormy night, a bird's nest fell to the ground, revealing its finely fashioned **O** structure.



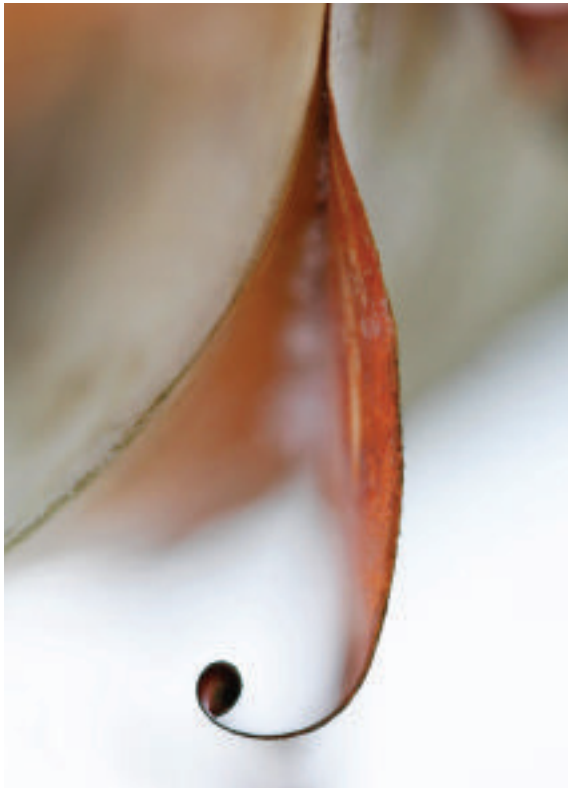
Please notice the perfect **P** of a fiddlehead fern.



Quizzical patterns like a lowercase **q** appear on rocks like this boulder from the shore of Upper Red Lake.



Regard the early spring flowers of prairie smoke in Blue Mounds State Park and you might see a delicate lowercase **r**.



Slivers of birch bark peel into a shape that looks like *S* written in script.

Tricky patterns on a moth fit this letter to a **T**.

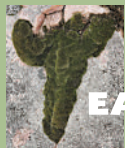


Under a microscope, would this piece of an oak leaf still look like U?



V is the shape of a rabbit's ears.

A NOTE TO



EACHERS

Find links to teachers guides to this and other stories online at www.mndnr.gov/young_naturalists.



When spring arrives, watch for trout lilies to bloom in **W** formation in Nerstrand Big Woods State Park.



Xeric soil won't grow wild rice. This native grass grows in lakes. Before it pops up out of the water, the blades lie on the surface and cross into patterns such as **X**.



You can see **Y** on a sheet of ice on a pond.



Zigzag cracks draw a **Z** on a lichen-covered rock at Split Rock Lighthouse State Park. **V**