

NORTH

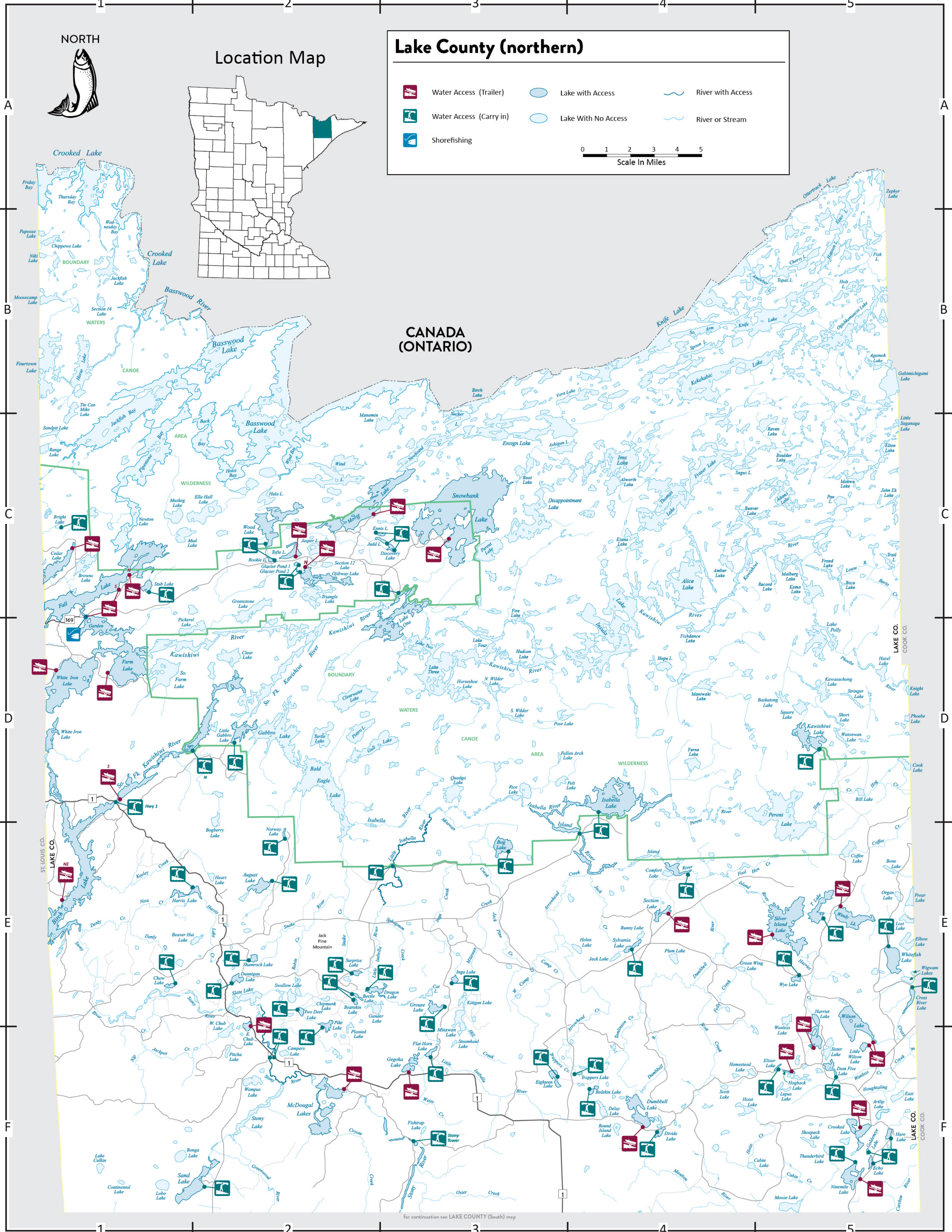
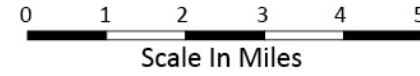


Location Map



Lake County (northern)

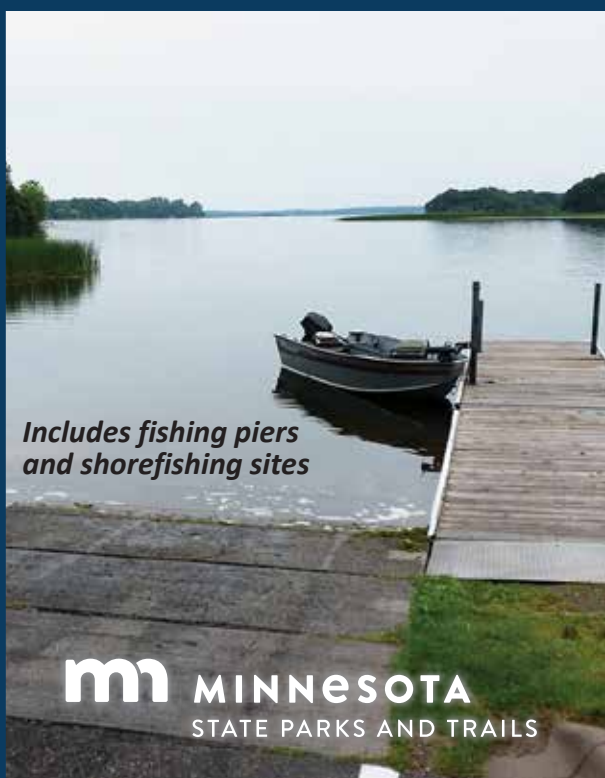
- Water Access (Trailer)
- Water Access (Carry in)
- Shorefishing
- Lake with Access
- Lake With No Access
- River with Access
- River or Stream



CANADA (ONTARIO)

for continuation see LAKE COUNTY (South) map

LAKE COUNTY (northern)



Public Water Access in Minnesota:

Minnesota has approximately 3,000 public water access sites, 375 fishing piers and shore fishing sites and 35 state water trails. The Minnesota Department of Natural Resources (DNR), federal agencies and local government units share in the ownership and operation of these facilities.

DNR public water access sites are usually open 24 hours a day however, access sites owned by others may have different hours and rules. Most trailer access sites have concrete launch ramps and are designed for launching watercraft up to 18 ft. in length. There are some boat ramps that can handle larger boats. There are typically no launch fees unless the access is located within a park requiring a vehicle permit.

The following activities are unlawful at public water access sites: littering, camping, overnight mooring, shooting/hunting, fires, storage of watercraft, vehicles, or equipment of any kind, and consuming alcoholic beverages. See Minnesota Rules, chapter 6218 for complete rules.

Boating Access Etiquette

Keep the launch ramp area clear unless actively launching or loading. The line to launch/load is formed by the vehicles and trailers on land (not by the order of the boats in the water or at the dock). Conditions will vary from site to site and with the changing seasons so boaters should check the condition of the ramp and depth of water before each use.

Boating Laws

Enjoying Minnesota's lakes and rivers by paddle or motorboat is a wonderful privilege which comes with serious responsibilities. The Minnesota Boating Guide summarizes Minnesota's boating laws and regulations in an easy-to-read form. The waterbody you are using may also be subject to federal and local rules and restrictions. For a copy of the Boating Guide contact the DNR Information Center, 651-296-6157 or 888-646-6367 Email: info.dnr@state.mn.us

All motorized watercraft regardless of length and nonmotorized watercraft over 10 feet must be licensed and pay the registration fee (exceptions may apply).

Own Your Wake

Under Minnesota law, the damage your boat wake causes is treated the same as damage caused by an actual collision. Respect others so everyone can enjoy their time on the water.



- Stay more than 200 feet away from shorelines, docks, swimmers, and watercraft. Boats that create an artificial wake require even more distance to lower the impact.
- Minimize repetitive passes.
- Keep the noise down and be courteous to other boaters.

Top Boating Safety Tips

- Wear your life jacket —ensure children less than 10 years old always wear theirs.
- Stay sober—Alcohol is the #1 factor in boating fatalities.
- Share your Float Plan—Tell someone where you're going and when you will be back. If you're not back, they should call 911.
- Know your boat - stay alert while operating, scan for dangers; stay seated and low in the boat to prevent falls overboard.



Both are life jackets. Both will save your life. But only if they're worn. #Wearit



Fishing Information

Most persons 16 to 89 are required to have the appropriate license with them when fishing (exception may apply). Licenses are available online and at many stores that sell fishing related goods. To purchase a license by phone 24 hours a day, call 1-MN-LICENSE (888-665-4236) or go to mndnr.gov/buyalicense.

Season dates and bag limits can vary from lake to lake. Size restrictions may exist and fishing in a particular lake could be closed or limited. Check the Special Regulations and the Minnesota Fishing Regulations for more information or online at mndnr.gov/fishing.

Do Your Part to Protect Minnesota Waters

Aquatic Invasive Species (AIS)

AIS are non-native plants, animals, and diseases that harm fish populations, water quality and water recreation. Most boaters and anglers take action to prevent the spread of invasive species and protect Minnesota waters. To find out if a water body contains an AIS, visit mndnr.gov/lakefinder, visit mndnr.gov/infested, or look for an "Invasive Species Alert" sign at the public water access.

Watercraft Inspectors are Here to Help

Inspectors will inform you about AIS and will physically inspect your boat, trailer, other water-related equipment, and compartments that hold water. Be prepared:

When entering:

- Arrive cleaned and drained. Open the lids of closed compartments that could hold water, like live wells, so the inspector can see they are drained.



When exiting:

- Pull all drain plugs. Clean off any plants, mud and invasive animals.

Tell us how we are doing by emailing: wip.dnr@state.mn.us

Take Action

Before leaving the access or shoreland, you must:

- Clean your boat, trailer and gear to remove plants and prohibited invasive species.
- Drain all water and leave plugs out during transport.
- Dispose of unwanted bait in the trash.
- To keep leftover live baitfish: (1) bring extra bottled or dechlorinated tap water with you and (2) on shore before leaving, drain your bait container and refill it with the extra water.

Take these additional steps to reduce the risk of spreading AIS whenever possible:

- Decontaminate your equipment – find free stations at mndnr.gov/decon
- Spray your equipment with high-pressure water or rinse it with very hot water (120 degrees for at least two minutes or 140 degrees for at least 10 seconds).
- Dry your boat and gear for five days before using in another water body.

Know the Laws

- You may not transport aquatic plants or prohibited invasive species, dead or alive.
- You may not launch watercraft or place a trailer in the water if it has aquatic plants, zebra mussels or other prohibited invasive species attached or water present in compartments.
- You must drain all water, remove the drain plug(s) and leave all water-draining devices open when transporting watercraft, gear and equipment.
- You may not release bait or non-native species into Minnesota waters.
- You may need a permit to harvest bait or transport water from an infested water body.

mndnr.gov/AIS

Public Water Accesses in northern Lake County

Water Body Name	Map Grid Location	Ramp Type	Fish Species	Administrator	Water Body Name	Map Grid Location	Ramp Type	Fish Species	Administrator
August Lake	E2	carry in	N,W	USFS	† Inga Lake	E3	carry in	N	USFS
Bearskin Lake	E2	carry in	N / A	USFS	† Isabella Lake	D4	carry in	N,W	USFS
Beetle Lake	E2	carry in	ST	USFS	Island River	E4	carry in	Various	USFS
Birch Lake (Hwy. 1)	D1	carry in	LB,N,S,SB,W	County	Judd Lake (Enter through Discovery)	C3	carry in	ST	DNR
Birch Lake (N)	D1	concrete	LB,N,S,SB,W	USFS	† Kawishiwi Lake	D5	carry in	N,W	USFS
Bright Lake	C1	carry in	N / A	DNR	† Little Gabbro Lake	D2	carry in	C,N,W	USFS
Bog Lake	E3	carry in	N / A	USFS	† Little Isabella River	E3	carry in	Various	USFS
Campers Lake/Stony River	F2	carry in	N / A	USFS	Little Wilson Lake	F5	gravel	W	USFS
† † Chow Lake	E1	carry in	N	USFS	McDougal Lake	F2	concrete	N,W	USFS
Cedar Lake	C1	concrete	C,N,W	USFS	† Moose Lake	C2	asphalt	N,SB,W	USFS
Crooked Lake	F5	concrete	M,SB,W	USFS/DNR	Ninemile Lake	F5	concrete	C,N,W	USFS
Cross River Lake	E5	carry in	N,W	USFS	Ninemile Lake	F5	carry in	C,N,W	USFS
Dam 5 Lake	F2	carry in	N,W	USFS	Norway Lake	E2	carry in	ST	USFS
Discovery Lake	C3	carry in	ST	DNR	Ojibway Lake	C2	concrete	S,W,C,LB,N,SB	USFS
Discovery Lake	C3	carry in	ST	DNR	† One lake	C3	carry in	N,S,W	USFS
Divide Lake	F4	carry in	ST	USFS	† Pike Lake	E2	carry in	LB,N	USFS
Dragon Lake	E2	carry in	C,N,S,W	USFS	† Redskin Lake	F4	carry in	ST	USFS
Dumbbell Lake	F4	concrete	M,SB	USFS	Rookie Lake	C2	carry in	N / A	USFS
Dunnigan Lake	E2	carry in	S,SB,W	USFS	Sand Lake	F2	carry in	N,W	USFS
East Chub Lake	E2	earth	N,S,W	DNR	Section Lake	E4	earth	N / A	USFS
Echo Lake	F5	carry in	ST	DNR	Shamrock Lake	E2	carry in	LB,S	USFS
Eighteen Lake	F3	carry in	W	USFS	Silver Island Lake	E5	concrete	N,W	USFS/DNR
Elixir Lake	F5	carry in	N	USFS	† Snowbank Lake	C3	concrete	LT,N,W	DNR
Ennis Lake	C3	carry in	ST	DNR	† † South Fork Kawishiwi River (N)	D2	carry in	Various	USFS
Fall Lake (N)	C1	asphalt	C,N,W	USFS	South Fork Kawishiwi River (S)	D1	concrete	Various	USFS
Fall Lake (S)	C1	earth	C,N,W	DNR	Stony River - Stony Tower	F3	carry in	Various	USFS
† Farm Lake	D1	concrete	C,N,SB,W	USFS	Stony River	F2	carry in	Various	USFS
Flathorn Lake	F3	carry in	N,S,W	USFS	Stub Lake	C1	carry in	C,N,S,W	DNR
Garden Lake	C1	concrete	N,SB,S,W	DNR	Surprise Lake	E2	carry in	C,N,S,W	USFS
Garden Lake	C1	fishing pier	N,SB,S,W	DNR	Sylvania Lake	E4	carry in	N	USFS
Gegoka Lake	F3	gravel	N,S,W	USFS	† T Lake	E5	carry in	N,W	USFS
Glacier Pond One	C2	carry in	ST	USFS	Tofte Lake	C2	concrete	ST	USFS
Glacier Pond Two	C2	carry in	ST	USFS	† Trappers Lake	F4	carry in	N / A	USFS
Golden Eye Lake	F5	carry in	N / A	USFS	Two Deer Lake	E2	carry in	N	USFS
Grouse Lake	E3	carry in	C,N,S,W	USFS	Whitefish Lake	E5	carry in	N,W	USFS
† Hare Lake	F5	carry in	N / A	USFS	White Iron Lake	D1	concrete	N,W	DNR
Harriet Lake	F5	concrete	C,N,W	USFS	Wilson Lake	F5	gravel	N,W	USFS
Harris Lake	E1	carry in	C,M,W	USFS	Windy Lake	E5	gravel	N,W	USFS
Hogback Lake	F5	earth	ST	USFS	Wood Lake	C2	carry in	N / A	USFS
					Wye Lake	E5	carry in	N,W	USFS

† Portage over 100 yards

Administrator: DNR - MN Dept. of Natural Resources
MN DOT - MN Dept. of Transportation
USFS - U.S. Forest Service
USFWS - U.S. Fish and Wildlife Service

Fish Species: C — Crappie, LB — Largemouth Bass, LT — Lake Trout, M — Muskellunge, N — Northern Pike, S — Sunfish, SB — Smallmouth Bass, ST — Stream Trout, W — Walleye, N / A — Not Available

† BWC A Entry Point. Special Permits and regulations apply. For Further information contact:
U.S.F.S - Superior National Forest
8901 Grand Avenue Place
Duluth, MN 55808
Metro Area Federal Information Center
(651) 349-5333



Accessible Accesses

Public water access sites developed after 2012 will have accessible parking spaces and accessible routes to the top of the boat ramp. Some sites have additional accessible routes to a dock and other site amenities. When known, these sites are identified with the red, accessible symbol shown above.

Fishing piers and developed shore fishing sites have been designed to meet the needs of people with disabilities. Parking is generally located within 300 feet of the site and there is a hard surface path from the parking area to the facility. The DNR cooperates with a variety of local units of government to maintain the fishing piers.

If a facility is out of compliance or you have difficulty using any part of an access or pier, please report the problem to the site administrator listed in this guide, or contact the DNR Information Center, 651-296-6157 (888-MINNDNR) or email info.dnr@state.mn.us.



Photos: Minnesota Department of Natural Resources, unless otherwise noted.

Persons with disabilities may request this information in an alternative format.



Minnesota State Parks and Trails-Grand Rapids (218) 999-7923

The DNR Information Center
The DNR's Information Center is available to provide free publications of facilities and services as well as answers questions pertaining to DNR recreational opportunities in Minnesota.

500 Lafayette Road,
St. Paul, MN 55155-4040
651-296-6157 (local) or 1-888-MINNDNR

mndnr.gov