

# AITKIN COUNTY



Includes fishing piers and shorefishing sites



Clean your watercraft, Drain all water, Dispose of unused bait.

Federal Aid Project funded by your purchase of fishing equipment and motor boat fuels.



Minnesota State Parks and Trails-Grand Rapids (218) 999-7923

**The DNR Information Center**  
The DNR's Information Center is available to provide free publications of facilities and services as well as answers questions pertaining to DNR recreational opportunities in Minnesota.

500 Lafayette Road, St. Paul, MN 55155-4040  
651-296-6157 (local) or 1-888-MINNDNR  
mndnr.gov

Photos: Minnesota Department of Natural Resources, unless otherwise noted. Persons with disabilities may request this information in an alternative format.



## Public Water Access in Minnesota:

The Minnesota DNR State Parks and Trail's water recreation program provides approximately 1,650 boat accesses, over 365 fishing piers and shore fishing sites and manages 35 designated Water Trails in Minnesota. The DNR, Federal Government and local communities operate boat accesses. See the table on the right for specific site information. **The DNR boating programs are funded by user fees** including boat license & gas tax related to marine use.

Public accesses are usually open 24 hours unless otherwise posted. Most sites have launch ramps but some sites, especially on smaller rivers, are carry in only. Bathrooms and docks are usually located only on the larger and busier sites.

**Public Water Access Rules** - The launch area must be kept clear and the following activities are unlawful: littering, camping, shooting, building fires, and consuming alcoholic beverages. See Minnesota Rules, chapter 6218 for complete rules.

## Boating in Minnesota

The annual *Minnesota Boating Guide* summarizes Minnesota's boating laws and regulations in an easy-to-read form. The guide supplies information about operating watercraft on the state's lakes and rivers. Operator age restrictions apply to operators 17 years old and younger.

**Licensing** - All motorized and non-motorized watercraft must be licensed by the Department of Natural Resources (DNR). Please contact the DNR License Bureau for information.



## Fishing in Minnesota

**Fishing Regulations and Licensing** - All persons 16 and older are required to have the appropriate license with them when fishing. Licenses are available through the DNR License Bureau, most County Auditors and many stores that sell fishing related goods. Trout fishing requires a trout stamp. For more information call the DNR information Center at (651) 296-6157 or 1-888-646-6367. To purchase a license by phone 24 hours a day, call 1-888-MN-LICENSE (665-4236).

**Selective Harvest Fishing** - Improved technology and increased fishing have caused the quality of fishing to decline in many waters. Practicing "Selective Harvest" offers anglers an opportunity to take some fish home while releasing others back into the water to improve fishing quality. Here are some tips to use for effective **Selective Harvest fishing**:

- Use barbless hooks
- Play the fish quickly and handle the fish carefully
- Never hold the fish by the eyes
- Use a needle nose pliers to remove hooks or cut the line if it is too deep
- Ease the fish back into the water, do not throw it back.

## Safe Boating

**Life Jackets** - On all boats (except a sailboard) regardless of length there must be a readily accessible Coast Guard approved wearable life jacket for each person on board. In addition, on boats 16 feet or longer, except canoes and kayaks, there must also be at least one Coast Guard approved throwable device, such as a ring buoy or seat cushion.



**Boating While Intoxicated (BWI)** - Boating while intoxicated is illegal. For persons found to be under the influence there are significant penalties, including fines and possible jail sentences.

**Personal Watercraft** - Special laws apply including wearing a life jacket and operating at slow no wake speed at certain distances from other watercraft, swimmers and other objects in the water. Operator age restrictions also apply. Consult the Boating Guide for more information. A DNR safety video is available free of charge.

## Aquatic Invasive Species (AIS) Laws and Requirements:

The DNR lists lakes and rivers as "infested" with certain aquatic invasive species.

If you are harvesting bait, commercial fishing, or diverting or taking water, you might need to follow special regulations in infested waters.

To identify an infested water, look for orange Invasive Species Alert signs at the access. You can also use LakeFinder to find out if a particular lake is listed as infested: [mndnr.gov/lakefind](http://mndnr.gov/lakefind). For more information about infested waters, including an up-to-date infested waters list and additional location information, visit [mndnr.gov/invasives](http://mndnr.gov/invasives).

Before leaving the water access or shoreline property, you MUST:

- Clean** off ALL aquatic plants and animals
- Drain** all water including bilge, livewells, baitwells, bait buckets, motor and ballast tanks
- Pull** the plug and leave it out

Get into the habit of taking these three simple steps, and it will soon become part of your routine. Pull away from the boat ramp area. Check for and remove plants while strapping the boat down. Pull the plug when adjusting the motor. If you have other people (especially kids) with you, have them help! Adding a few minutes will help safeguard our waters.

Cleaning water-related equipment is just as important as cleaning boats, so while you're cleaning your boat, please remember to also:

- Clean anchors, ropes, fishing tackle, and other objects that were in the water. Many species can be transported in the mud or in fishing lines and rope
- Dump water out of canoes, kayaks, and other watercraft before leaving

These are YOUR waters and it is YOUR responsibility to inspect, clean, and drain your boats!

## AIS Bait Laws

It is illegal to transport lake and river water. To save your bait (minnows or leeches), the DNR recommends bringing "fish safe", treated water from home and keeping it in your vehicle or cooler. Bringing ice can be a good idea on warm days to cool down the water.

DO NOT dump unwanted bait into water bodies or on the shoreline! Unwanted bait belongs in the trash or a designated compost bin. Unwanted worms must be disposed of in the trash.



## Working Together to Protect the Waters

Watercraft Inspectors are here to ensure watercraft and equipment are "clean in, clean out!" If you need assistance, have questions about the laws, or are curious about the program, please ask!

Ways you can help the Watercraft Inspectors:

- Please clean your boat and pull your plug as soon as you are safely able to. That way when the inspector comes, the inspection process will move quickly
- If there is a Decontamination Unit present, please follow all the instructions given by the inspectors, for your safety and theirs. There will be plenty of time to ask questions and watch them work from a safe distance

Ways the Watercraft Inspectors can help you:

- The inspectors have tools, wrenches and pliers, so if you are having trouble with your plug, ask!
- If there are weeds that are hard to reach, inspectors can also help pull weeds off boats or other such tasks. They also have grabbing tools for plants

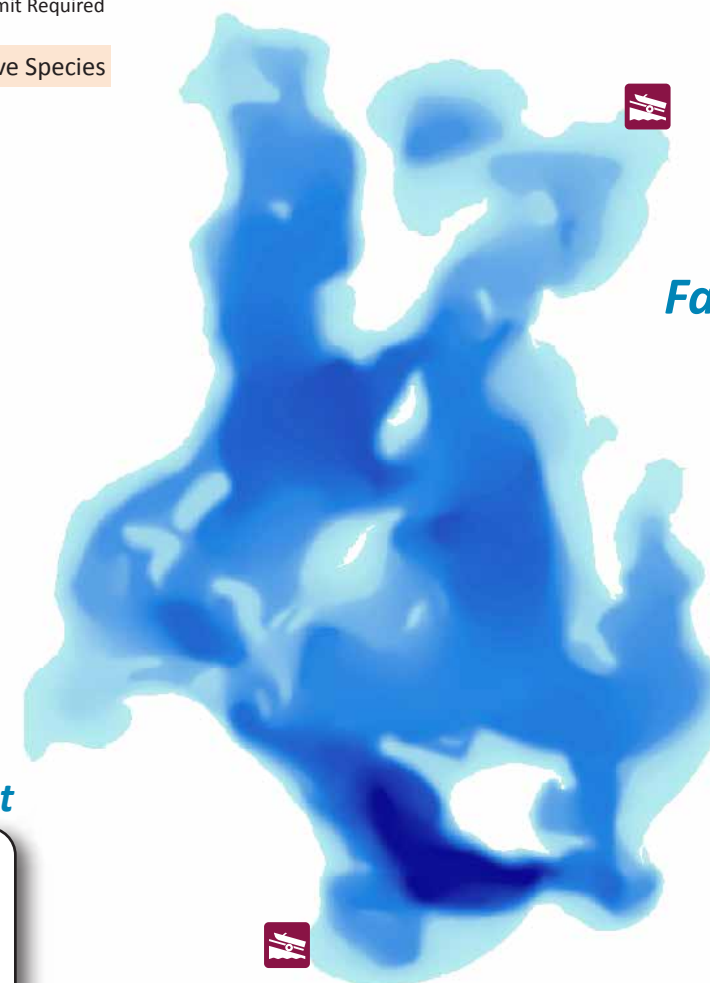
When you see the Watercraft Inspectors, please be cooperative. The law requires compliance with inspectors, and it will help everyone to be on their way in a timely and pleasant manner.

## Public Water Accesses in Aitkin County

Water Body Name	Map Grid Location	Ramp Type	Fish Species	Administrator	Water Body Name	Map Grid Location	Ramp Type	Fish Species	Administrator	
Ball Bluff Lake	A4	concrete	C, LB, N, S	DNR	Jacobson Campground	A4	concrete	various	County	
Big Pine Lake	E2	concrete	C, LB, N, S, W	DNR	Lee Ferry	B4	carry in	various	DNR	
BIG SANDY LAKE	Dam	B4	concrete	C, N, S, W	DNR	Wold's Ferry Crossing	C4	concrete	various	DNR
	North	B4	concrete	C, N, S, W	USCOE	Palisade	C3	concrete	various	County
	East	C4	concrete	C, N, S, W	DNR	Hwy 169	C2	concrete	various	County
	South	C4	concrete	C, N, S, W	Township	Co. Rd. 54	D2	carry in	various	County
Blackface Lake	A4	concrete	LB, N, S,	DNR	Aitkin Access	D2	concrete	various	County	
Blind Lake	C2	concrete	C, LB, N, S, W	DNR	Moulton Lake	C2	concrete	C, LB, N, S, W	DNR	
Blue Lake	D2	carry in	ST	DNR	Nord Lake	D2	concrete	C, N, S, W	DNR	
Cedar Lake	D2	concrete	C, LB, N, S, W	DNR	Pine Lake	F5	concrete	N / A	DNR	
Clear Lake	E3	concrete	C, LB, N, S, W	DNR	Portage Lake	D3	concrete	C, N, S	DNR	
Cutaway Lake	B4	carry in	N, S, W	County	Rabbit Lake	D3	earth	C, N, S	DNR	
Dam Lake	D3	concrete	C, N, S, W	DNR	Reddy Creek	E3	carry in	N / A	DNR	
Elm Island Lake	D2	earth	C, N, S, W	DNR	Remote Lake	B4	carry in	N / A	DNR	
Esquagamah Lake	C2	concrete	C, N, S, W	DNR	Rice River (open May 1 - Nov 30, no motors)	D4	concrete	various	USFWS	
Farm Island Lake	E2	concrete	C, LB, N, S, W	DNR	Ripple Lake	D2	concrete	C, LB, N, S, W	DNR	
Farm Island Lake (N)	D2	concrete	C, LB, N, S, W	DNR	Rock Lake	C4	concrete	C, N, S	DNR	
Fleming Lake	C3	concrete	C, LB, N, S, W	DNR	Round Lake	C4	concrete	C, LB, N, S, W	USFS	
French Lake	C3	earth	C, N, S, W	DNR	Round Lake	C2	concrete	C, LB, N, S, W	DNR	
Gun Lake	C3	concrete	C, LB, N, S, W	DNR	Round Lake	E2	concrete	N, S, W	DNR	
Hammal Lake	D2	concrete	C, LB, N, S, W	DNR	* Sandy River Lake (Hwy. 65)	C4	earth	various	DNR	
Hanging Kettle Lake	D2	concrete	N / A	DNR	Savanna Lake	B5	carry in	N / A	DNR	
Hanson Lake	D2	concrete	C, S	DNR	* Section 12 Lake	D3	concrete	C, S, LB, N	DNR	
Hay Lake	A4	concrete	C, N, S	DNR	* Shumway (Green) Lake	B5	concrete	C, N, S	DNR	
Hickory/Pine Lakes	D2	carry in	C, LB, N, S, W	DNR	Shumway (Green) Lake	B5	fishing pier	C, N, S	DNR	
Hickory Lake	D2	carry in	C, LB, N, S, W	DNR	Sissabagamah Lake	D2	concrete	C, LB, N, S	DNR	
Hill Lake	A3	fishing pier	C, LB, N, S, W	DNR	Snake River (Bear Creek)	F4	carry in	various	DNR	
Hill Lake (North)	A3	concrete	C, LB, N, S, W	City	Snake River (Silver Star Rd)	F4	earth	various	County	
Hill Lake (South)	A3	concrete	C, LB, N, S, W	DNR	Snake River (Aitkin Co Pk)	F4	carry in	various	County	
Little Ball Bluff Lake	A4	earth	C, LB, N, S	County	Spirit Lake	E2	concrete	C, LB, N, S, W	DNR	
Lone Lake	E2	concrete	C, LB, N, S, W	DNR	Sugar Lake	E3	concrete	C, LB, N, S, W	DNR	
* Long Lake	D3	concrete	C, LB, N, S, W	DNR	Swamp Lake	E3	carry in	N / A	DNR	
Loon (Town Line) Lake	B5	concrete	LT/ST	DNR	Taylor Lake	A3	carry in	ST	DNR	
Mallard (Rice) Lake	E2	carry in	wildlife lake	DNR	Turner Lake	C3	carry in	C, N, S	County	
Malmo	E3	concrete	C, M, N, S, SB, W	DNR	Twenty Lake	E3	carry in	N / A	DNR	
North Garrison Bay	E2	concrete	C, M, N, S, SB, W	DNR	Vanduse Lake	A4	earth	C, LB, N, S	County	
Wealthwood	E2	concrete	C, M, N, S, SB, W	DNR	Washburn Lake	A3	earth	N / A	DNR	
Co. Hwy. 37	E2	carry in	C, M, N, S, SB, W	DNR	Waukenabo Lake	C2	concrete	C, LB, N, S, W	DNR	
Pike Point	F1	concrete	C, M, N, S, SB, W	DNR	White Elk Lake	B2	gravel	N / A	DNR	
Shaw-bush-kung	F2	concrete	C, M, N, S, SB, W	DNR	Wilkins Lake	C3	concrete	C, LB, N, S, W	Township	
Liberty Beach	F3	concrete	C, M, N, S, SB, W	DNR	* Wladimiraf (Section 10) Lake	D2	concrete	C, LB, N, S	DNR	
Cedar Creek	F3	concrete	C, M, N, S, SB, W	DNR	Wolf Lake	B5	concrete	C, LB, N, S	DNR	
Minnewawa Lake (SE)	C4	concrete	C, LB, N, S, W	DNR						
Minnewawa Lake (E)	C4	concrete	C, LB, N, S, W	DNR						
Minnewawa Lake (W)	C4	concrete	C, LB, N, S, W	Township						

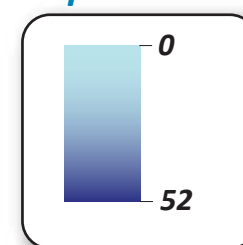
\* State Park Vehicle Permit Required

## Waters with Invasive Species



## Farm Island Lake

### Depth in Feet



Fish Species: C — Crappie, LB — Largemouth Bass, LT — Lake Trout, M — Muskellunge, N — Northern Pike, S — Sunfish, SB — Smallmouth Bass, ST — Stream Trout, W — Walleye, N / A — Not Available

Administrator: DNR - MN Dept. of Natural Resources  
MN DOT - MN Dept. of Transportation  
USFS - U.S. Forest Service  
USFWS - U.S. Fish and Wildlife Service  
USCOE - U.S. Corps of Engineers  
NPS - National Park Service



© Take Me Fishing