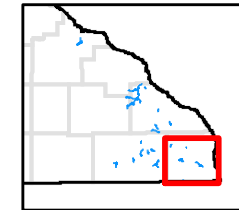


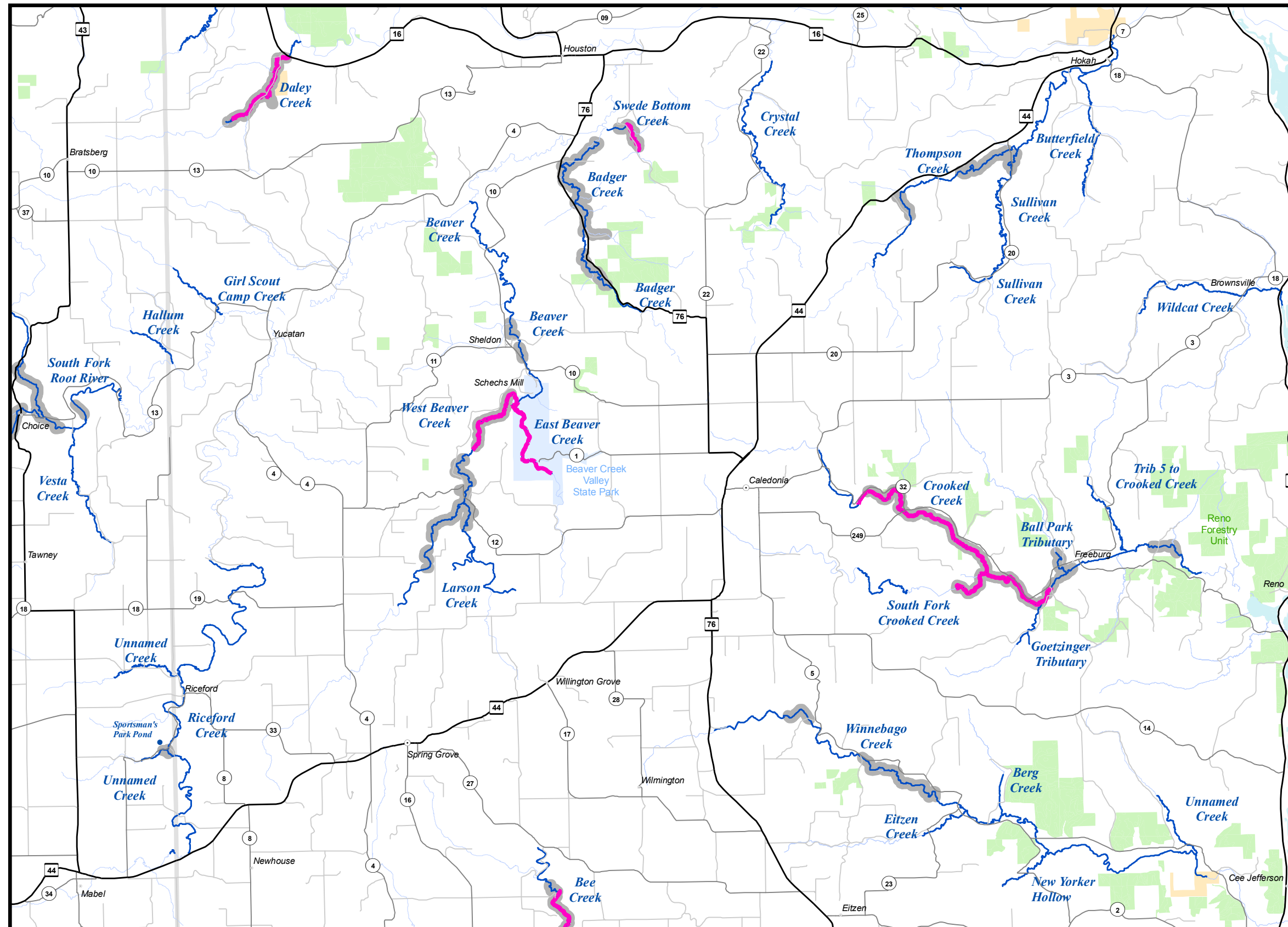
# Southeast Minnesota Winter Trout Streams 2007



## Houston County

Winter Catch & Release Season  
January 1 - March 31  
As Posted

These maps are intended as a  
supplement to the current  
Minnesota Fishing Regulations.  
Anglers are advised to read  
and know the current regulations  
in affect.



### Legend

- Streams
- Designated Trout Streams
- Winter Trout Stream
- Fishing Access Easement
- Forestry Units
- State Park Statutory Boundary
- Wildlife Management Areas

These maps are for general reference only.  
For detailed information on angling regulations see the  
Minnesota Fishing Regulations booklet and observe  
signs posted on the stream. Periodic updates to these  
maps will be available on the DNR Web site at  
[www.dnr.state.mn.us](http://www.dnr.state.mn.us).

