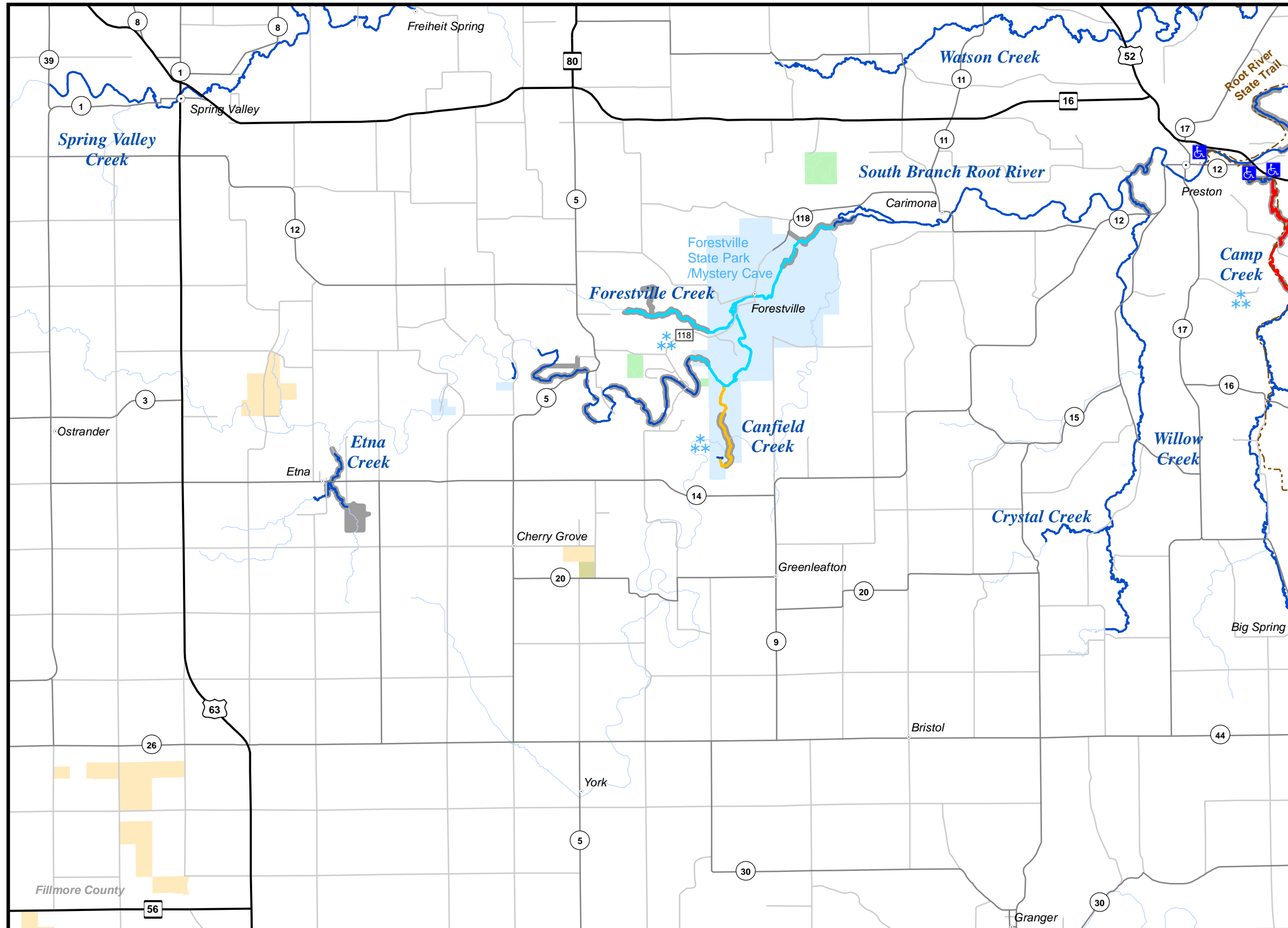
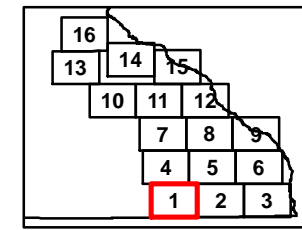


SE MAP 1



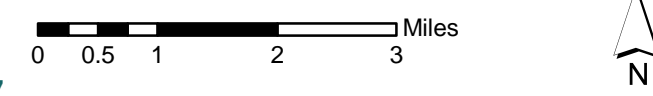
Map 1 Species Managed

Stream Name	Species Managed
Canfield Creek	Brown
"South Branch" (W)	Brown, Rainbow
Camp Creek	Brown
Crystal Creek (W)	Brown
Etna Creek	Brown
Forestville Creek	Brown
"North Branch" (W)	Brown
South Branch Root River	Brown, Rainbow
Spring Valley Creek	Brown (W), Rainbow
Watson Creek (W)	Brown
Willow Creek	Brown, Rainbow

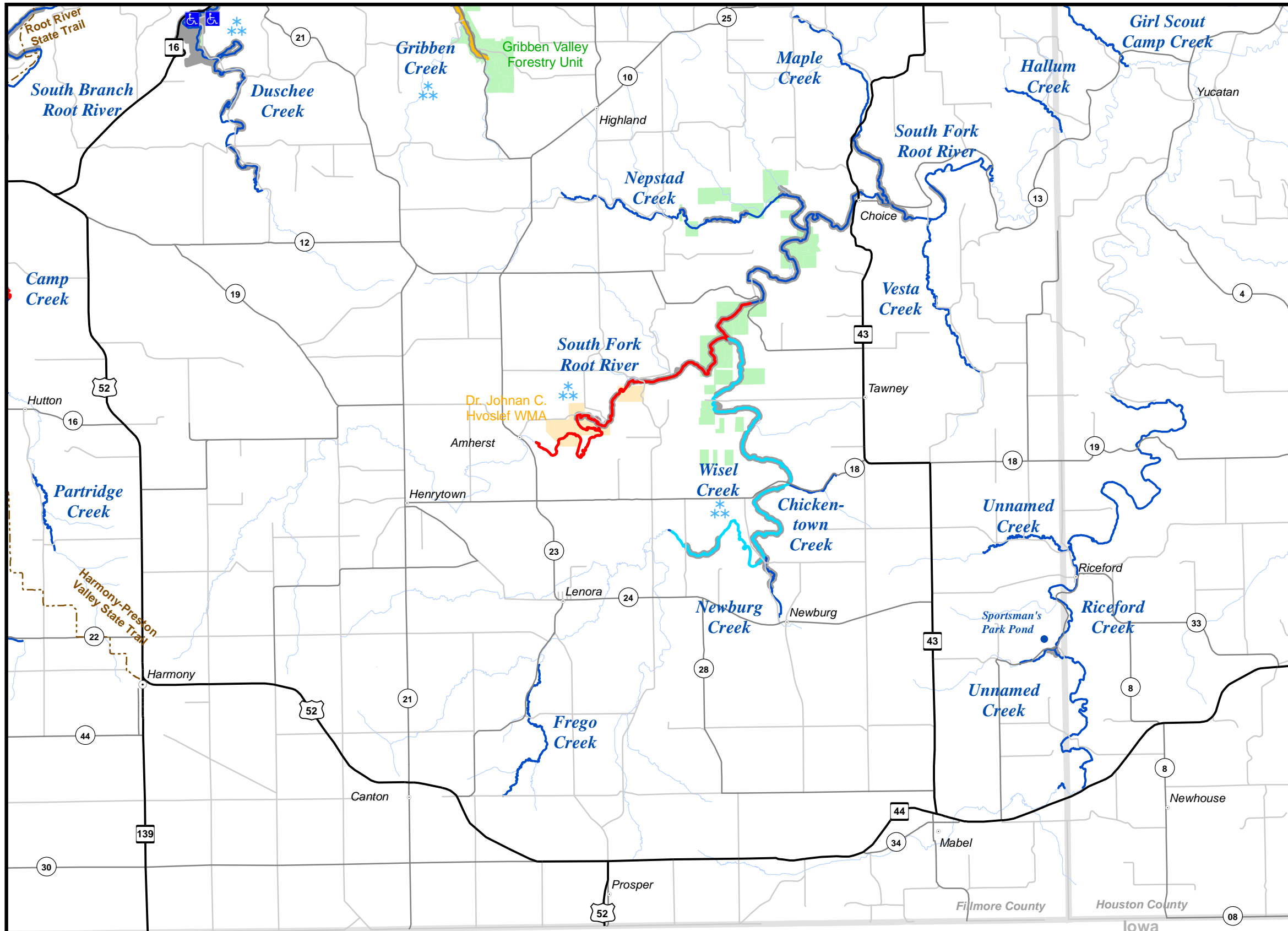
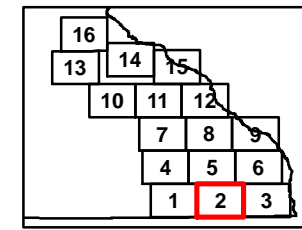
(W) Wild trout population

Legend

- Accessible Fishing Site
- Winter Catch & Release Season January 1 - March 31 as Posted Check Current Regulations
- State Trails
- Streams
- Designated Trout Streams
- 12 to 16 Inch Protected Slot for All Trout (Artificial Lures or Flies Only)
- 12 to 16 Inch Protected Slot for All Trout (Bait Allowed)
- 12 Inch Minimum for Brook Trout, Bag Limit of 1 (Artificial Lures or Flies Only)
- Catch & Release for All Trout (Artificial Lures or Flies Only)
- Catch & Release for All Trout (Bait Allowed)
- Fishing Access Easement
- Forestry Units
- State Park
- Wildlife Management Areas
- Scientific and Natural Areas



SE MAP 2



Map 2 Species Managed

Stream Name	Species Managed
Chickentown Creek (W)	Brook
Duschee Creek	Brook, Brown, Rainbow
Frego Creek (W)	Brown
Girl Scout Camp Creek (W)	Brook
Gribben Creek (W)	Brown
Hallum Creek (W)	Brook
Maple Creek (W)	Brook
Nepstad Creek (W)	Brook, Brown
Newburg Creek (W)	Brook, Brown
Partridge Creek (W)	Brown
Riceford Creek (W)	Brook, Brown
South Branch Root River	Brown, Rainbow
South Fork Root River	Brook, Brown, Rainbow
Sportsman's Park Pond Creek	Rainbow
Unnamed Creek (W)	Brook
Unnamed Creek (W)	Brook
Vesta Creek (W)	Brook
Wisel Creek	Brook, Brown

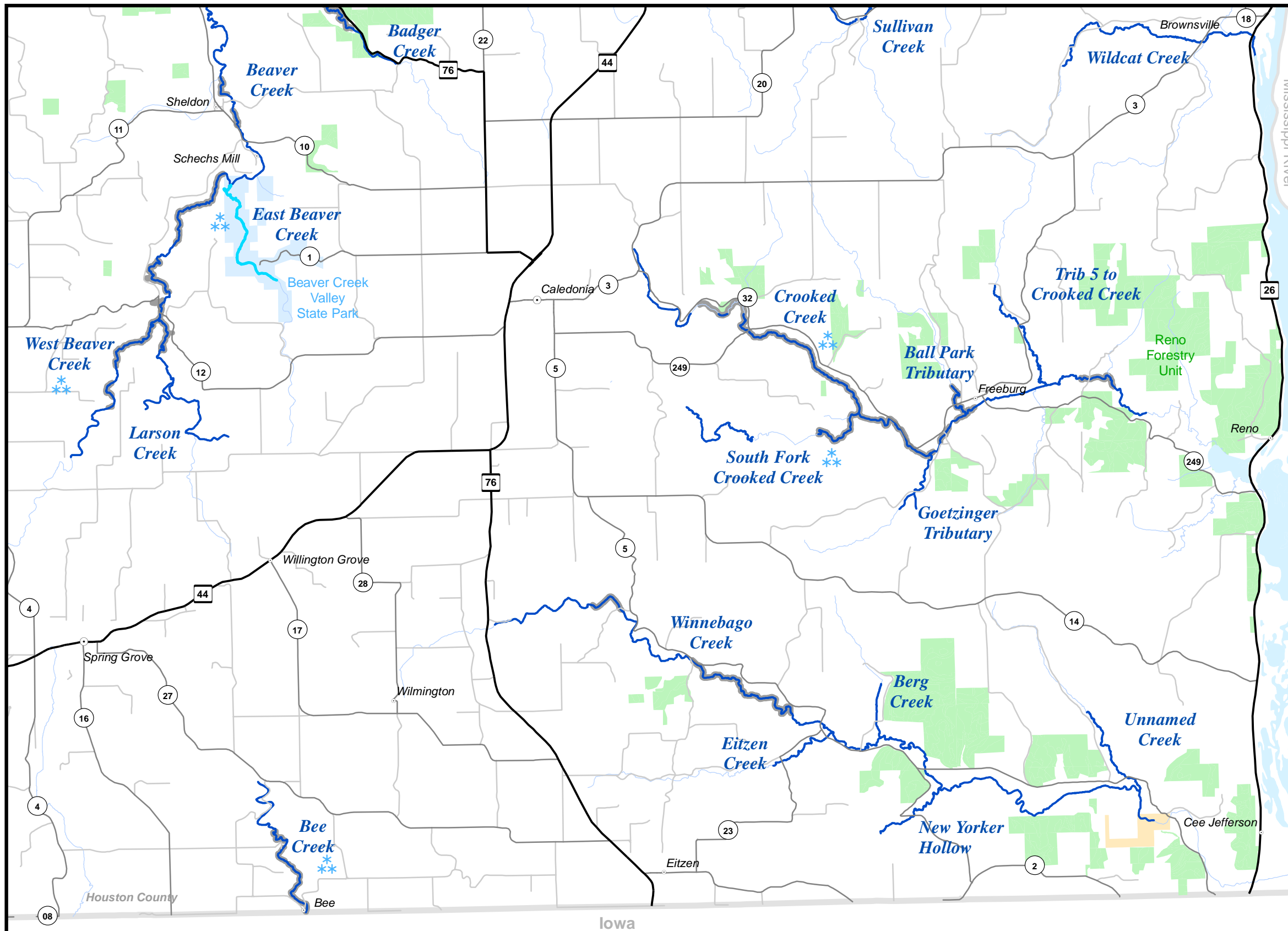
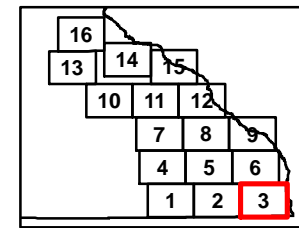
(W) Wild trout population

Legend

- Accessible Fishing Site
- Winter Catch & Release Season
January 1 - March 31 as Posted
Check Current Regulations
- State Trails
- Streams
- Designated Trout Streams
- 12 to 16 Inch Protected Slot for All Trout
(Artificial Lures or Flies Only)
- 12 to 16 Inch Protected Slot for All Trout
(Bait Allowed)
- 12 Inch Minimum for Brook Trout,
Bag Limit of 1 (Artificial Lures or Flies Only)
- Catch & Release for All Trout
(Artificial Lures or Flies Only)
- Catch & Release for All Trout
(Bait Allowed)
- Fishing Access Easement
- Forestry Units
- State Park
- Wildlife Management Areas
- Scientific and Natural Areas



SE MAP 3



Map 3 Species Managed

Stream Name	Species Managed
Badger Creek (W)	Brook, Brown
Ball Park Tributary	Brown
Beaver Creek	Brown
East Beaver Creek (W)	Brown
West Beaver Creek (W)	Brown, Brook
Bee Creek (W)	Brown, Brook
Berg Creek	Not actively managed
Crooked Creek	Brown, Brook, Rainbow
Eitzen Creek (W)	Brown
Goetzinger Tributary	Not actively managed
Larson Creek (W)	Brook
New Yorker Hollow (W)	Brook
South Fork Crooked Creek	Brown, Brook
Sullivan Creek (W)	Brown, Brook
Trib 5 to Crooked Creek	Brown
Unnamed Creek	Not actively managed
Wildcat Creek (W)	Brown
Winnebago Creek	Brown, Brook, Rainbow

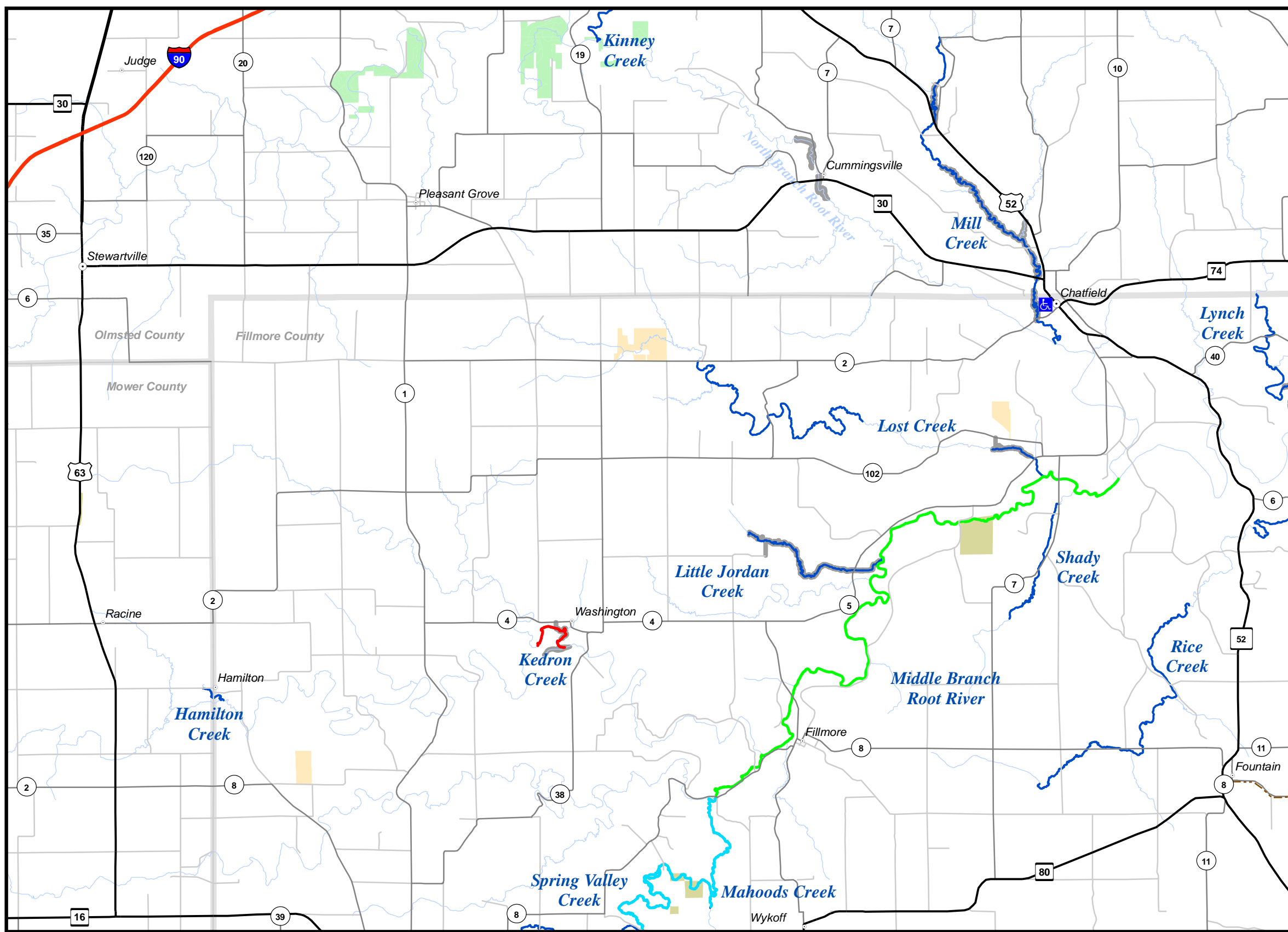
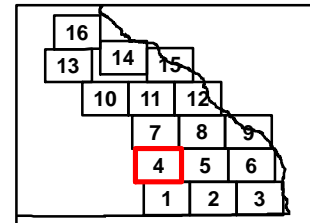
(W) Wild trout population

Legend

- Accessible Fishing Site
- Winter Catch & Release Season
January 1 - March 31 as Posted
Check Current Regulations
- State Trails
- Streams
- Designated Trout Streams
- 12 to 16 Inch Protected Slot for All Trout
(Artificial Lures or Flies Only)
- 12 to 16 Inch Protected Slot for All Trout
(Bait Allowed)
- 12 Inch Minimum for Brook Trout,
Bag Limit of 1 (Artificial Lures or Flies Only)
- Catch & Release for All Trout
(Artificial Lures or Flies Only)
- Catch & Release for All Trout
(Bait Allowed)
- Fishing Access Easement
- Forestry Units
- State Park
- Wildlife Management Areas
- Scientific and Natural Areas



SE MAP 4



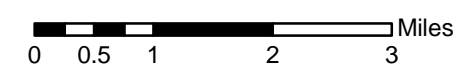
Map 4 Species Managed

Stream Name	Species Managed
Hamilton Creek (W)	Brook
Kedron Creek	Brown
Kinney Creek (W)	Brown
Little Jordan Creek	Brown
Lost Creek	Brown
Lynch Creek	Brook, Brown
Mahoods Creek (W)	Brown
Middle Branch, Root River (W)	Brown
Mill Creek	Brown, Rainbow
Rice Creek	Brown
Shady Creek (W)	Brook
Spring Valley Creek	Brown (W), Rainbow

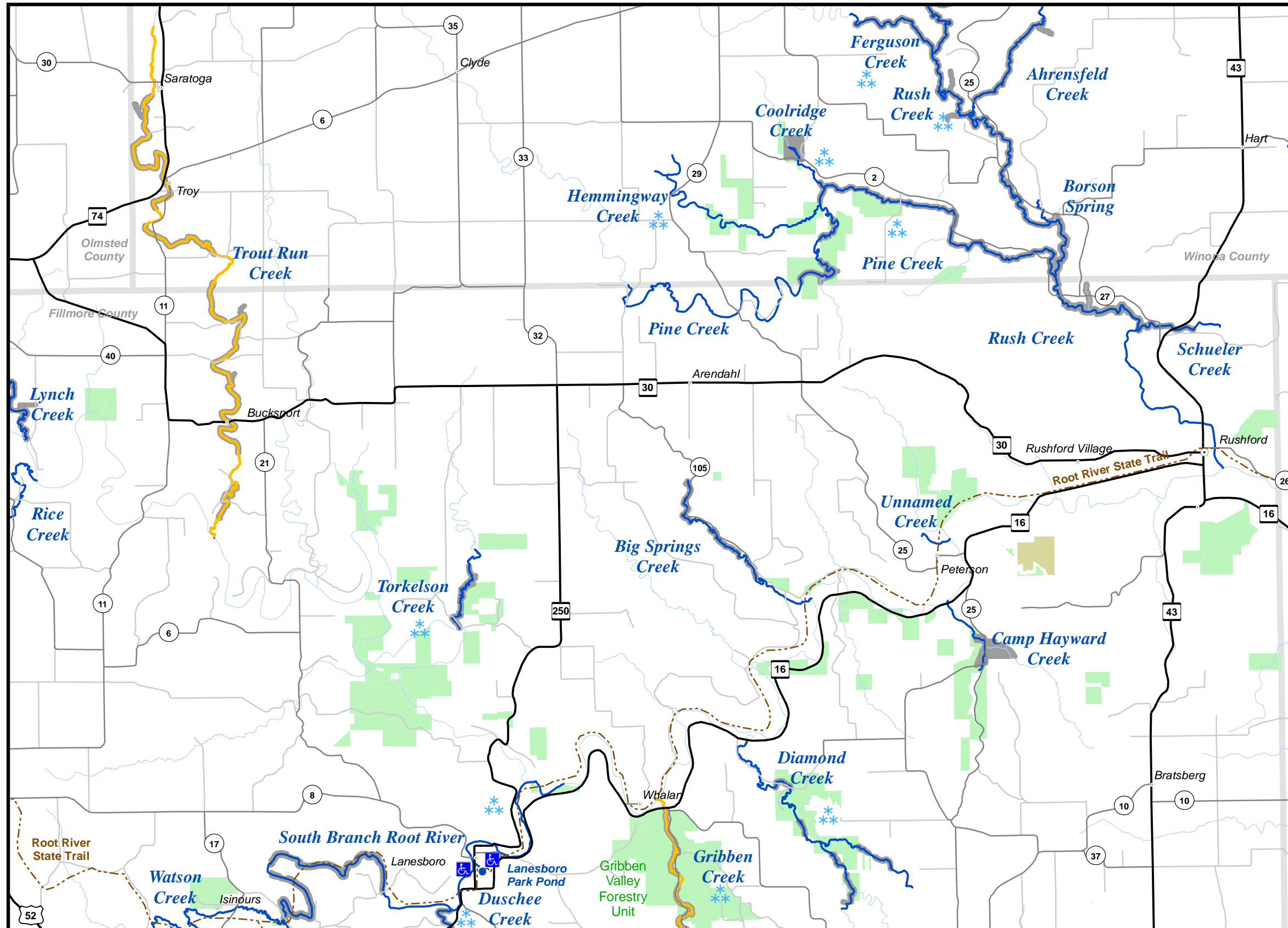
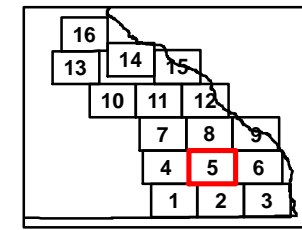
(W) Wild trout population

Legend

- Accessible Fishing Site
- Winter Catch & Release Season
January 1 - March 31 as Posted
Check Current Regulations
- State Trails
- Streams
- Designated Trout Streams
- 12 to 16 Inch Protected Slot for All Trout
(Artificial Lures or Flies Only)
- 12 to 16 Inch Protected Slot for All Trout
(Bait Allowed)
- 12 Inch Minimum for Brook Trout,
Bag Limit of 1 (Artificial Lures or Flies Only)
- Catch & Release for All Trout
(Artificial Lures or Flies Only)
- Catch & Release for All Trout
(Bait Allowed)
- Fishing Access Easement
- Forestry Units
- State Park
- Wildlife Management Areas
- Scientific and Natural Areas



SE MAP 5



Map 5 Species Managed

Stream Name	Species Managed
Ahrensfeld Creek (W)	Brown, Brook
Big Springs Creek (W)	Brown
Borson Spring	Brown
Camp Hayward Creek (W)	Brown, Brook
Coolridge Creek (W)	Brook, Brown
Diamond Creek (W)	Brown, Brook
Duschee Creek	Brown, Brook, Rainbow
Gribben Creek (W)	Brown
Hemmingway Creek (W)	Brook, Brown
Lanesboro Park Pond (Sylvan Park)	Rainbow
Pine Creek	Brown, Brook
Rush Creek	Brown, Rainbow
Schueler Creek (W)	Brown
South Branch Root River	Brown, Rainbow
Torkelson Creek (W)	Brown
Trout Run Creek (W)	Brown
Unnamed Creek	Not actively managed
Rice Creek	Brown
Watson Creek	Brown

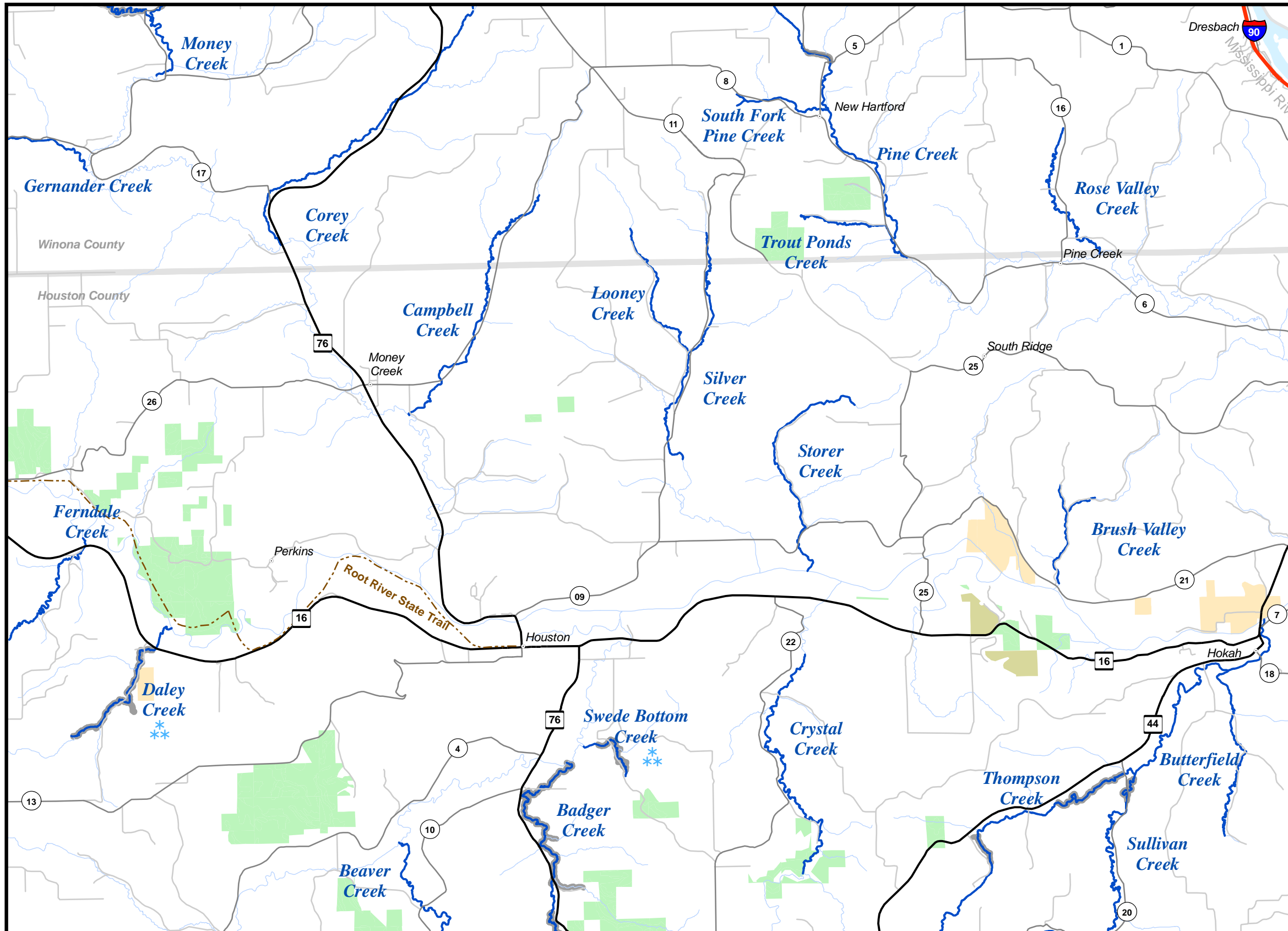
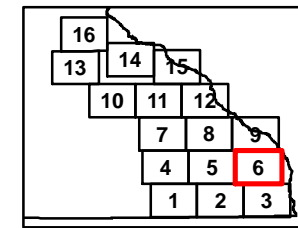
(W) Wild trout population

Legend

- Accessible Fishing Site
- Winter Catch & Release Season
January 1 - March 31 as Posted
Check Current Regulations
- State Trails
- Streams
- Designated Trout Streams
- 12 to 16 Inch Protected Slot for All Trout (Artificial Lures or Flies Only)
- 12 to 16 Inch Protected Slot for All Trout (Bait Allowed)
- 12 Inch Minimum for Brook Trout, Bag Limit of 1 (Artificial Lures or Flies Only)
- Catch & Release for All Trout (Artificial Lures or Flies Only)
- Catch & Release for All Trout (Bait Allowed)
- Fishing Access Easement
- Forestry Units
- State Park
- Wildlife Management Areas
- Scientific and Natural Areas



SE MAP 6



Map 6 Species Managed

Badger Creek (W)	Brook, Brown
Beaver Creek	Brown
Brush Valley Creek (W)	Brown
Butterfield Creek (W)	Brook, Brown
Campbell Creek (W)	Brook
Corey Creek (W)	Brook
Crystal Creek (W)	Brown
Daley Creek (W)	Brook, Brown
Ferndale Creek (W)	Brook, Brown
Germander Creek (W)	Brook
Money Creek (W)	Brown
Pine Creek (W)	Brook, Brown
Rose Valley Creek (W)	Brook, Brown
Silver Creek (W)	Brook
South Fork Pine Creek (W)	Brook, Brown
Storer Creek (W)	Brook, Brown
Sullivan Creek (W)	Brook, Brown
Swede Bottom Creek (W)	Brook
Thompson (Dexter) Creek	Brook, Brown
Trout Ponds Creek (W)	Brook

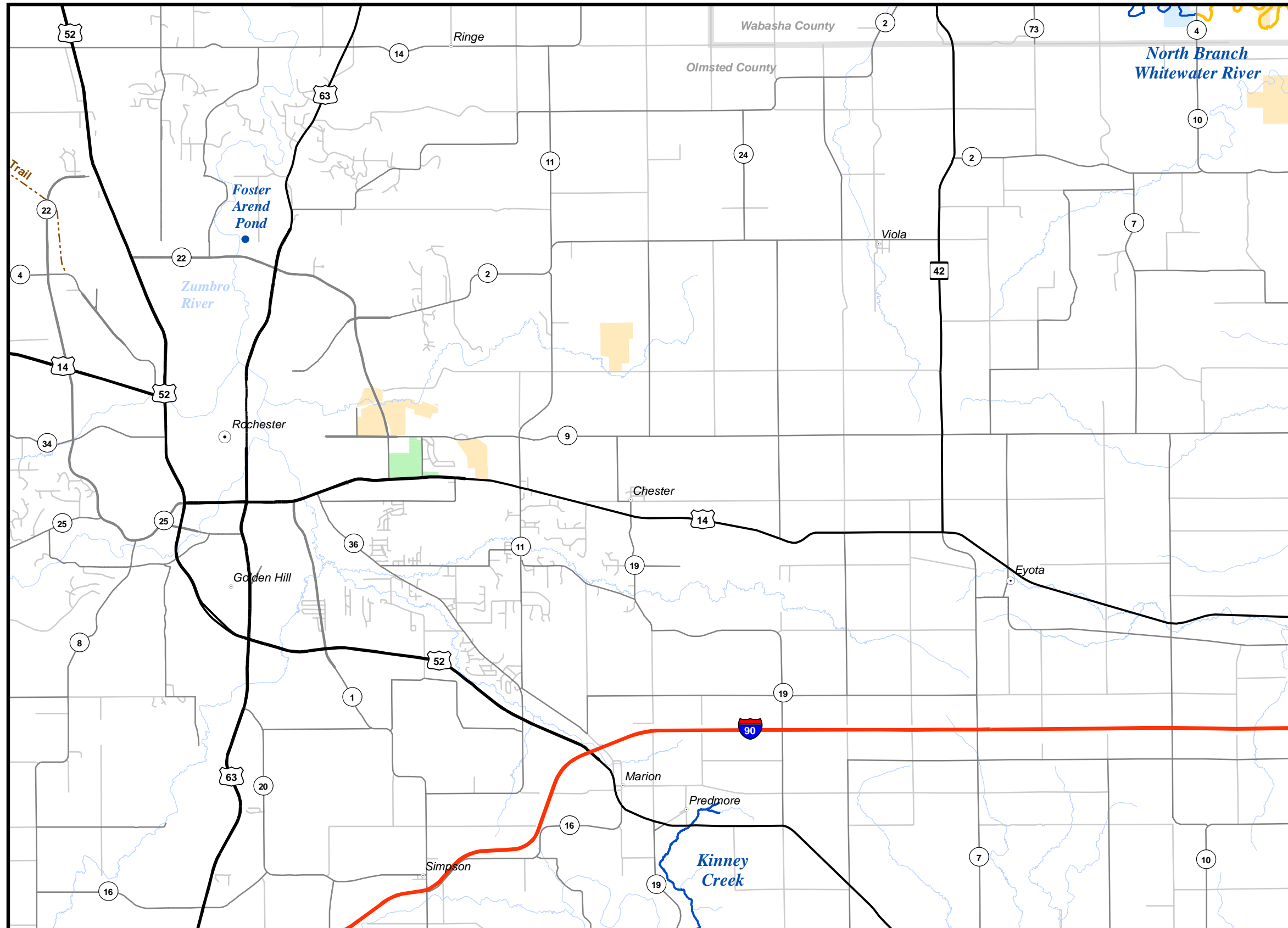
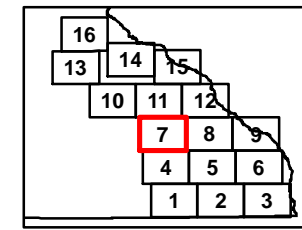
(W) Wild trout population

Legend

- Accessible Fishing Site
- Winter Catch & Release Season
January 1 - March 31 as Posted
Check Current Regulations
- State Trails
- Streams
- Designated Trout Streams
- 12 to 16 Inch Protected Slot for All Trout
(Artificial Lures or Flies Only)
- 12 to 16 Inch Protected Slot for All Trout
(Bait Allowed)
- 12 Inch Minimum for Brook Trout,
Bag Limit of 1 (Artificial Lures or Flies Only)
- Catch & Release for All Trout
(Artificial Lures or Flies Only)
- Catch & Release for All Trout
(Bait Allowed)
- Fishing Access Easement
- Forestry Units
- State Park
- Wildlife Management Areas
- Scientific and Natural Areas



SE MAP 7



Map 7	Species Managed
Foster Arend Pond	Rainbow
Kinney Creek (W)	Brown
North Branch Whitewater	Brown (W), Rainbow

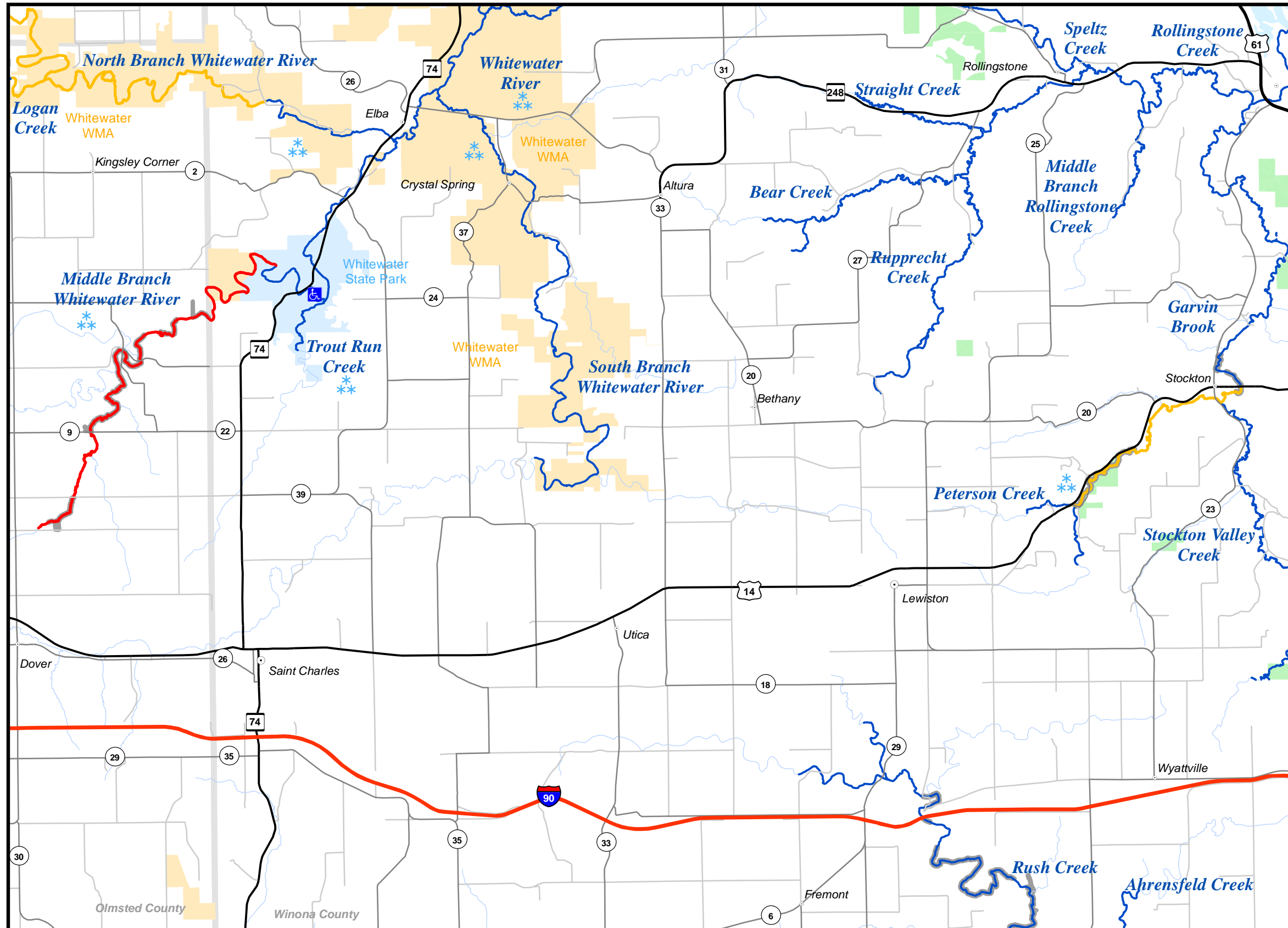
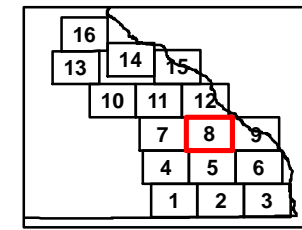
(W) Wild trout population

Legend

- Accessible Fishing Site
- Winter Catch & Release Season
January 1 - March 31 as Posted
Check Current Regulations
- State Trails
- Streams
- Designated Trout Streams
- 12 to 16 Inch Protected Slot for All Trout
(Artificial Lures or Flies Only)
- 12 to 16 Inch Protected Slot for All Trout
(Bait Allowed)
- 12 Inch Minimum for Brook Trout,
Bag Limit of 1 (Artificial Lures or Flies Only)
- Catch & Release for All Trout
(Artificial Lures or Flies Only)
- Catch & Release for All Trout
(Bait Allowed)
- Fishing Access Easement
- Forestry Units
- State Park
- Wildlife Management Areas
- Scientific and Natural Areas



SE MAP 8



Map 8 Species Managed

Stream Name	Species Managed
Ahrensfeld Creek (W)	Brown, Brook
Bear Creek (W)	Brook, Brown
Garvin Brook (W)	Brook, Brown
Logan (W)	Brown
Middle Branch Rollingstone Creek (W)	Brown
Middle Branch Whitewater	Brown, Brook, Rainbow
North Branch Whitewater	Brown (W), Rainbow
Rollingsstone Creek (W)	Brown
Rupprecht Creek (W)	Brown
Rush Creek	Brown, Rainbow
South Branch Whitewater	Brown (W), Rainbow
Speltz Creek (W)	Brown, Brook
Stockton Valley Creek (W)	Brook, Brown
Straight Creek (W)	Brown
Trout Run Creek (W)	Brown, Brook
Whitewater River	Brown (W), Rainbow

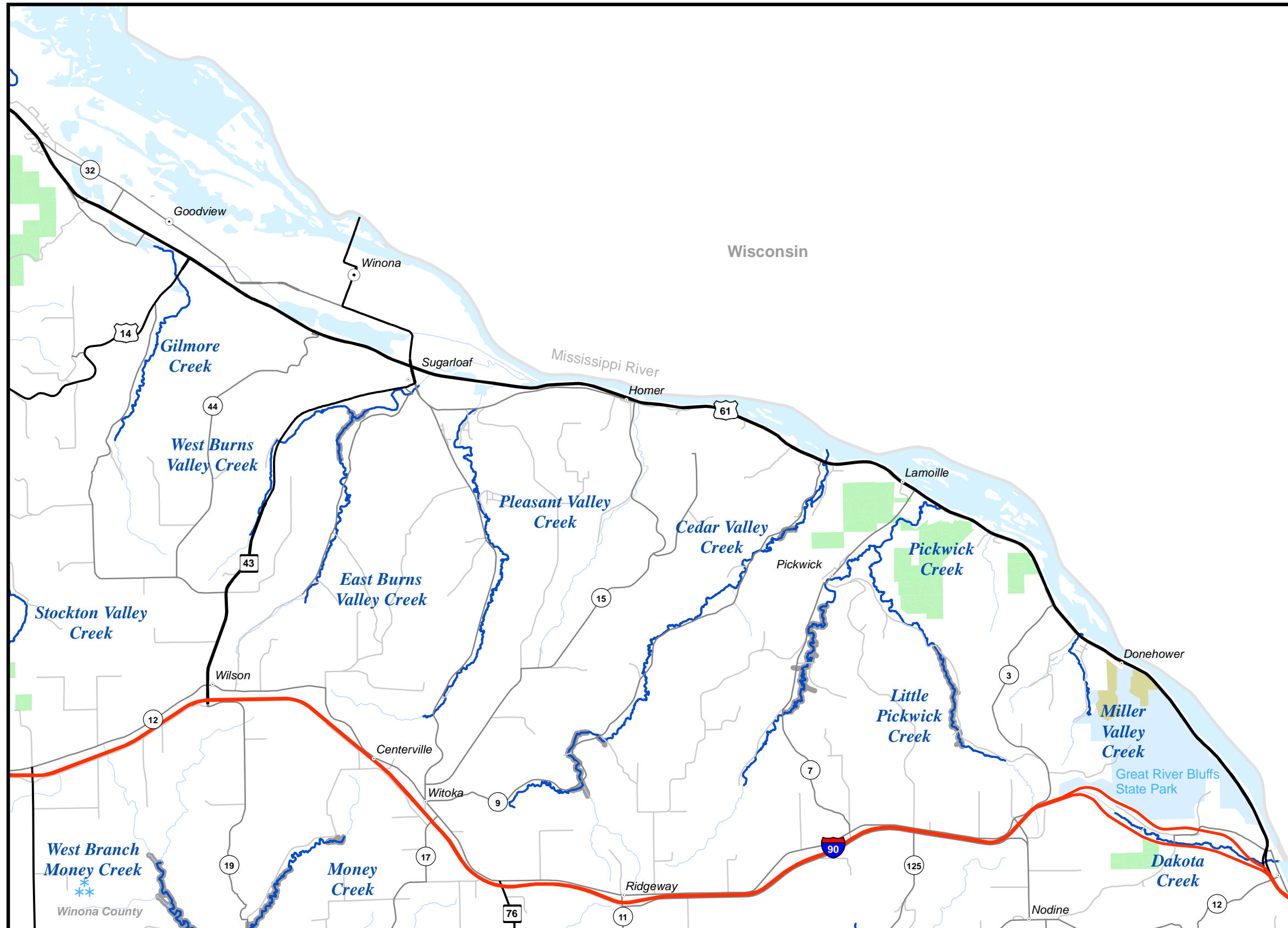
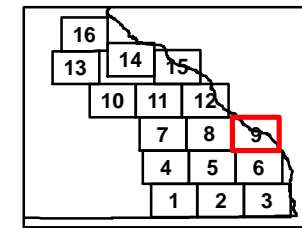
(W) Wild trout population

Legend

- Accessible Fishing Site
- Winter Catch & Release Season
January 1 - March 31 as Posted
Check Current Regulations
- State Trails
- Streams
- Designated Trout Streams
- 12 to 16 Inch Protected Slot for All Trout
(Artificial Lures or Flies Only)
- 12 to 16 Inch Protected Slot for All Trout
(Bait Allowed)
- 12 Inch Minimum for Brook Trout,
Bag Limit of 1 (Artificial Lures or Flies Only)
- Catch & Release for All Trout
(Artificial Lures or Flies Only)
- Catch & Release for All Trout
(Bait Allowed)
- Fishing Access Easement
- Forestry Units
- State Park
- Wildlife Management Areas
- Scientific and Natural Areas



SE MAP 9



Map 9 Species Managed

Stream Name	Species Managed
Cedar Valley Creek (W)	Brook, Brown
Dakota Creek (W)	Brook, Brown
East Burns Valley Creek (W)	Brook, Brown
Gilmore Creek (W)	Brown
Little Pickwick Creek (W)	Brook, Brown
Miller Valley Creek (W)	Brook
Money Creek (W)	Brown
Pickwick Creek (W)	Brown
Pleasant Valley Creek (W)	Brook, Brown
Stockton Valley Creek (W)	Brook, Brown
West Branch Money Creek (W)	Brown
West Burns Valley Creek (W)	Brown, Brook

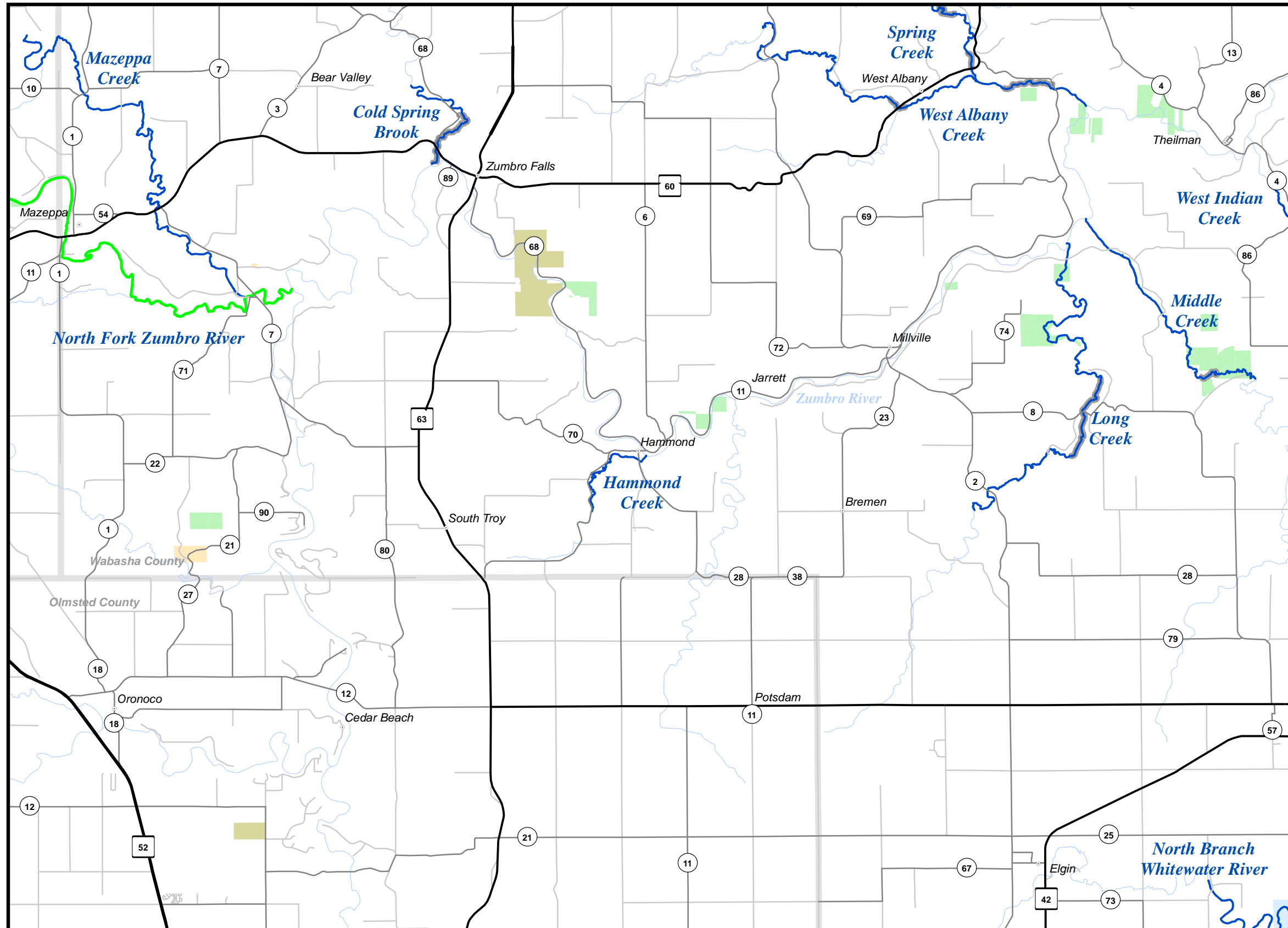
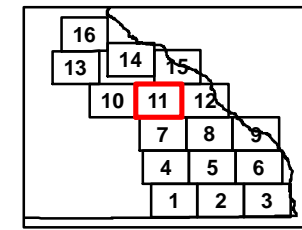
(W) Wild trout population

Legend

- Accessible Fishing Site
- Winter Catch & Release Season
January 1 - March 31 as Posted
Check Current Regulations
- State Trails
- Streams
- Designated Trout Streams
- 12 to 16 Inch Protected Slot for All Trout
(Artificial Lures or Flies Only)
- 12 to 16 Inch Protected Slot for All Trout
(Bait Allowed)
- 12 Inch Minimum for Brook Trout,
Bag Limit of 1 (Artificial Lures or Flies Only)
- Catch & Release for All Trout
(Artificial Lures or Flies Only)
- Catch & Release for All Trout
(Bait Allowed)
- Fishing Access Easement
- Forestry Units
- State Park
- Wildlife Management Areas
- Scientific and Natural Areas



SE MAP 11



Map 11 Species Managed

Waterway	Species Managed
Cold Spring Brook (W)	Brook, Brown
Hammond Creek (W)	Brook, Brown
Long Creek (W)	Brown
Mazeppa Creek (W)	Brown
Middle Creek (W)	Brook, Brown
North Fork Zumbro River (W)	Brown
Spring Creek (W)	Brown
West Albany Creek (W)	Brown
West Indian Creek (W)	Brown
North Branch Whitewater	Brown (W), Rainbow

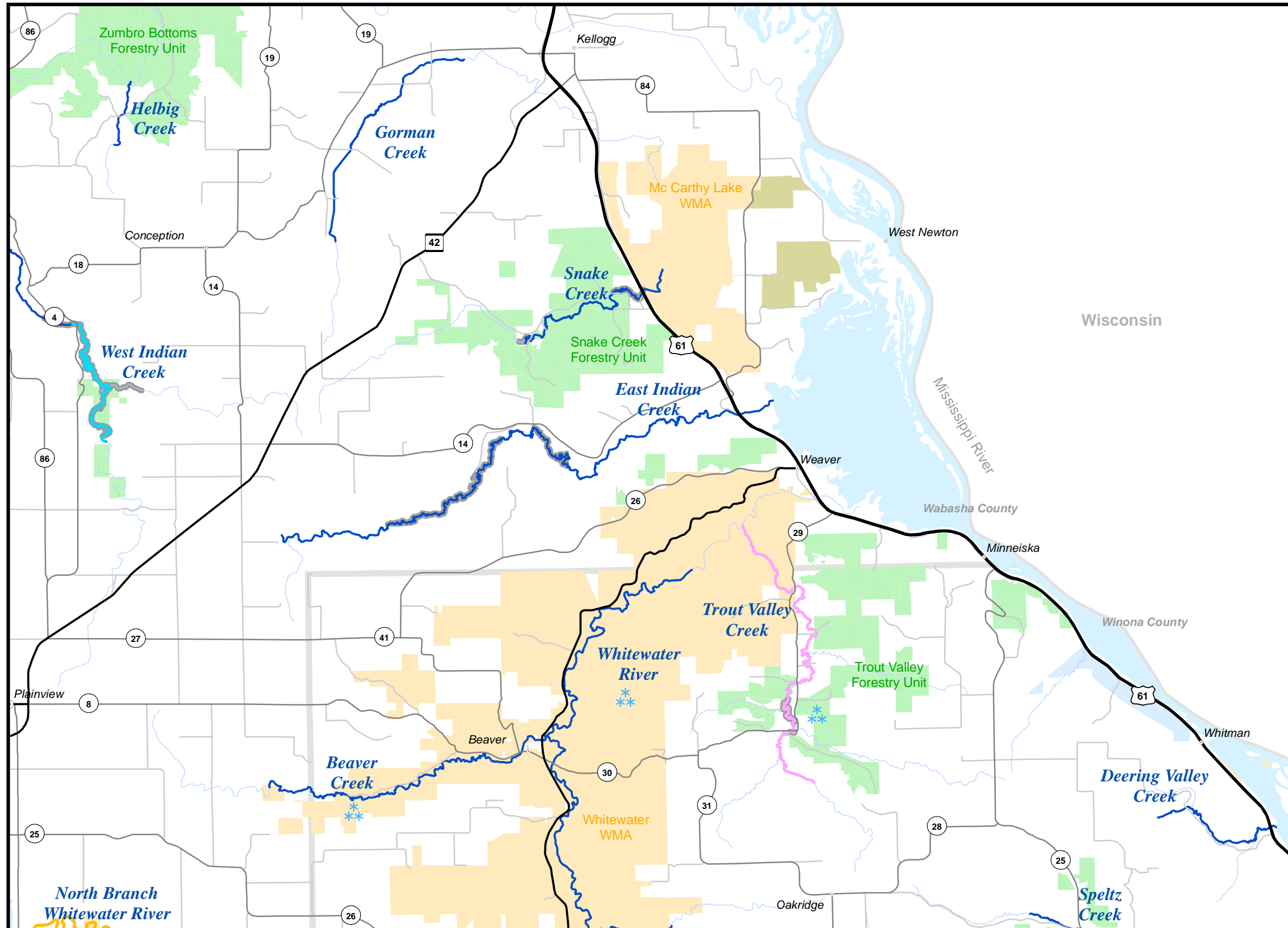
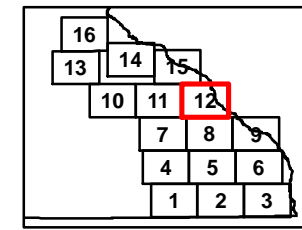
(W) Wild trout population

Legend

- Accessible Fishing Site
- Winter Catch & Release Season
January 1 - March 31 as Posted
Check Current Regulations
- State Trails
- Streams
- Designated Trout Streams
- 12 to 16 Inch Protected Slot for All Trout
(Artificial Lures or Flies Only)
- 12 to 16 Inch Protected Slot for All Trout
(Bait Allowed)
- 12 Inch Minimum for Brook Trout,
Bag Limit of 1 (Artificial Lures or Flies Only)
- Catch & Release for All Trout
(Artificial Lures or Flies Only)
- Catch & Release for All Trout
(Bait Allowed)
- Fishing Access Easement
- Forestry Units
- State Park
- Wildlife Management Areas
- Scientific and Natural Areas



SE MAP 12



Map 12 Species Managed

Waterway	Species Managed
Beaver Creek (W)	Brown
Deering Valley Creek (W)	Brown
East Indian Creek (W)	Brook, Brown
Gorman Creek (W)	Brook, Brown
Helbig Creek (W)	Brook
Snake Creek (W)	Brook
Speltz Creek (W)	Brown, Brook
Trout Valley Creek (W)	Brook, Brown
West Indian Creek (W)	Brown
Whitewater River	Brown (W), Rainbow
North Branch Whitewater River	Brown (W), Rainbow

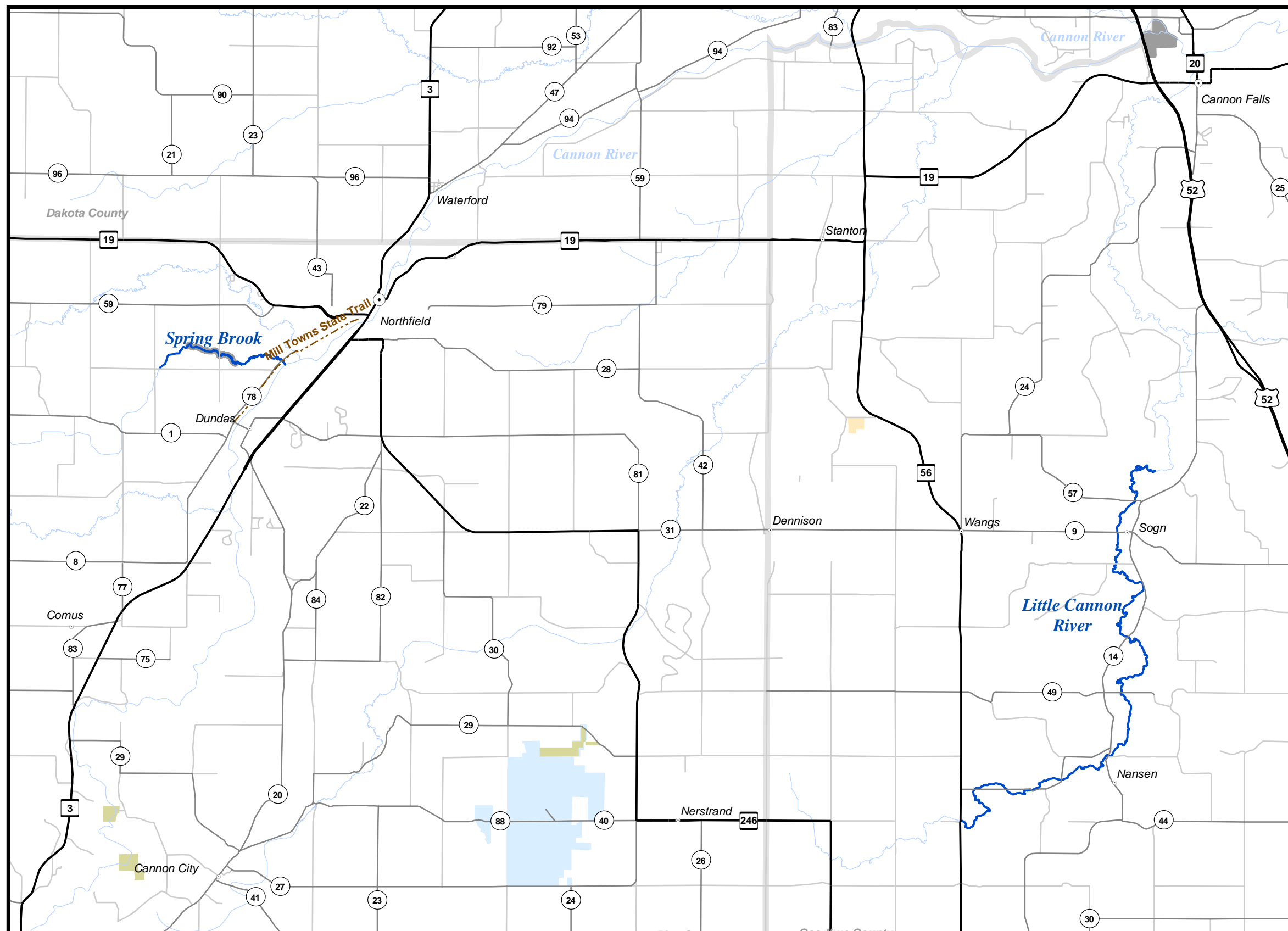
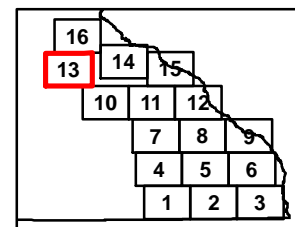
(W) Wild trout population

Legend

- Accessible Fishing Site
- Winter Catch & Release Season
January 1 - March 31 as Posted
Check Current Regulations
- State Trails
- Streams
- Designated Trout Streams
- 12 to 16 Inch Protected Slot for All Trout
(Artificial Lures or Flies Only)
- 12 to 16 Inch Protected Slot for All Trout
(Bait Allowed)
- 12 Inch Minimum for Brook Trout,
Bag Limit of 1 (Artificial Lures or Flies Only)
- Catch & Release for All Trout
(Artificial Lures or Flies Only)
- Catch & Release for All Trout
(Bait Allowed)
- Fishing Access Easement
- Forestry Units
- State Park
- Wildlife Management Areas
- Scientific and Natural Areas



SE MAP 13



Map 13 **Species Managed**

Little Cannon River
Spring Brook (W)

Rainbow, Brown
Brook

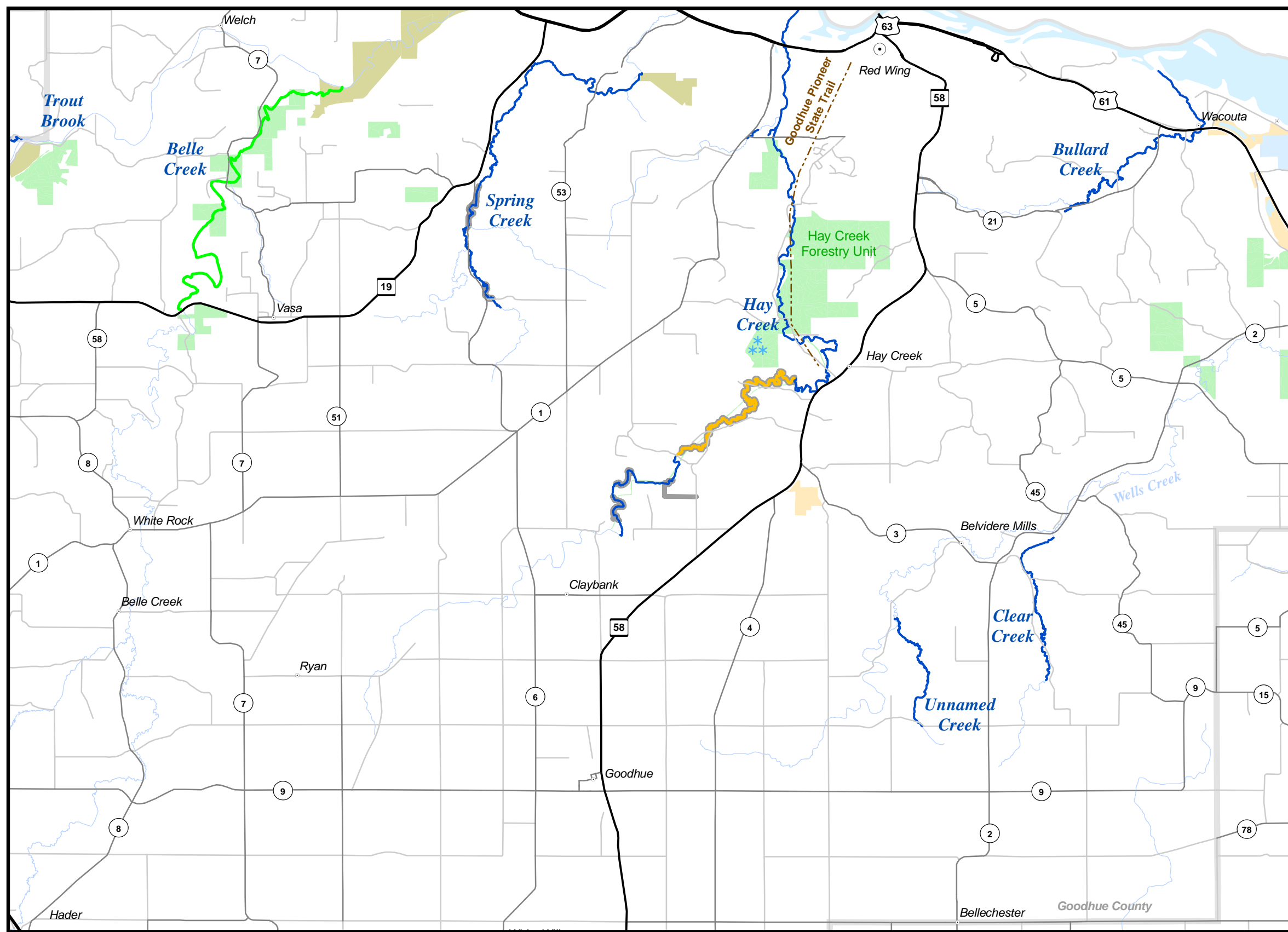
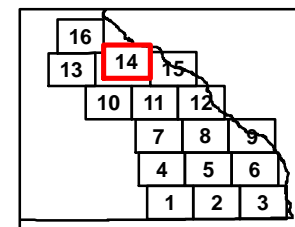
(W) Wild trout population

Legend

- Accessible Fishing Site
- Winter Catch & Release Season
January 1 - March 31 as Posted
Check Current Regulations
- State Trails
- Streams
- Designated Trout Streams
- 12 to 16 Inch Protected Slot for All Trout
(Artificial Lures or Flies Only)
- 12 to 16 Inch Protected Slot for All Trout
(Bait Allowed)
- 12 Inch Minimum for Brook Trout,
Bag Limit of 1 (Artificial Lures or Flies Only)
- Catch & Release for All Trout
(Artificial Lures or Flies Only)
- Catch & Release for All Trout
(Bait Allowed)
- Fishing Access Easement
- Forestry Units
- State Park
- Wildlife Management Areas
- Scientific and Natural Areas



SE MAP 14



Map 14 Species Managed

Stream	Species Managed
Belle Creek (W)	Brown
Bullard Creek (W)	Brook, Brown
Clear Creek (W)	Brook
Hay Creek (W)	Brown
Spring Creek	Brown, Brook
Trout Brook (W)	Brown, Brook
Unnamed Creek (W)	Brook

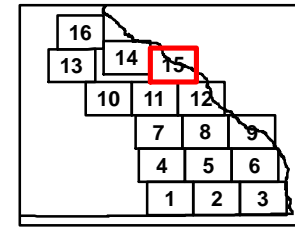
(W) Wild trout population

Legend

- Accessible Fishing Site
- Winter Catch & Release Season
January 1 - March 31 as Posted
Check Current Regulations
- State Trails
- Streams
- Designated Trout Streams
- 12 to 16 Inch Protected Slot for All Trout
(Artificial Lures or Flies Only)
- 12 to 16 Inch Protected Slot for All Trout
(Bait Allowed)
- 12 Inch Minimum for Brook Trout,
Bag Limit of 1 (Artificial Lures or Flies Only)
- Catch & Release for All Trout
(Artificial Lures or Flies Only)
- Catch & Release for All Trout
(Bait Allowed)
- Fishing Access Easement
- Forestry Units
- State Park
- Wildlife Management Areas
- Scientific and Natural Areas



SE MAP 15



Map 15 Species Managed

Map 15	Species Managed
Gilbert Creek	Brown, Brook
Miller Creek (W)	Brown
Second Creek (W)	Brook
Spring Creek (W)	Brown
Trout Brook (W)	Brook

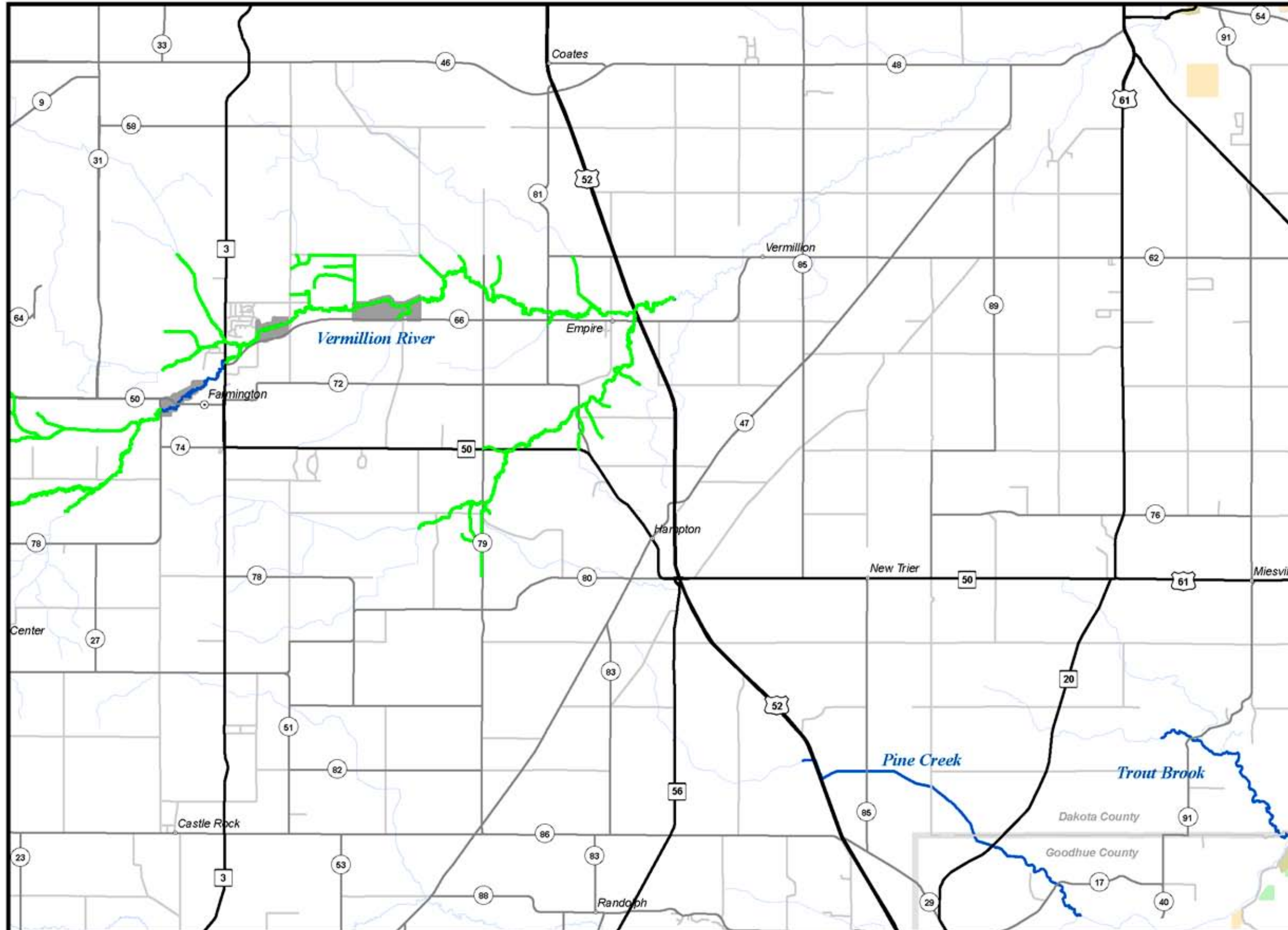
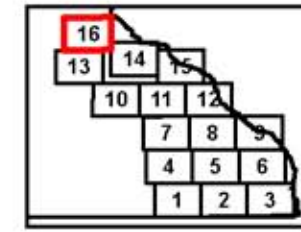
(W) Wild trout population

Legend

- Accessible Fishing Site
- Winter Catch & Release Season
January 1 - March 31 as Posted
Check Current Regulations
- State Trails
- Streams
- Designated Trout Streams
- 12 to 16 Inch Protected Slot for All Trout
(Artificial Lures or Flies Only)
- 12 to 16 Inch Protected Slot for All Trout
(Bait Allowed)
- 12 Inch Minimum for Brook Trout,
Bag Limit of 1 (Artificial Lures or Flies Only)
- Catch & Release for All Trout
(Artificial Lures or Flies Only)
- Catch & Release for All Trout
(Bait Allowed)
- Fishing Access Easement
- Forestry Units
- State Park
- Wildlife Management Areas
- Scientific and Natural Areas



SE MAP 16



Map 16	Species Managed
Pine Creek (W)	Brown, Brook
Trout Brook (W)	Brown, Brook
Vermillion River	Brown, Rainbow

Legend

- Accessible Fishing Site
- Winter Catch & Release Season
January 1 - March 31 as Posted
Check Current Regulations
- State Trails
- Streams
- Designated Trout Streams
- 12 to 16 Inch Protected Slot for All Trout
(Artificial Lures or Flies Only)
- 12 to 16 Inch Protected Slot for All Trout
(Bait Allowed)
- 12 Inch Minimum for Brook Trout,
Bag Limit of 1 (Artificial Lures or Flies Only)
- Catch & Release for All Trout
(Artificial Lures or Flies Only)
- Catch & Release for All Trout
(Bait Allowed)
- Fishing Access Easement
- Forestry Units
- State Park
- Wildlife Management Areas
- Scientific and Natural Areas