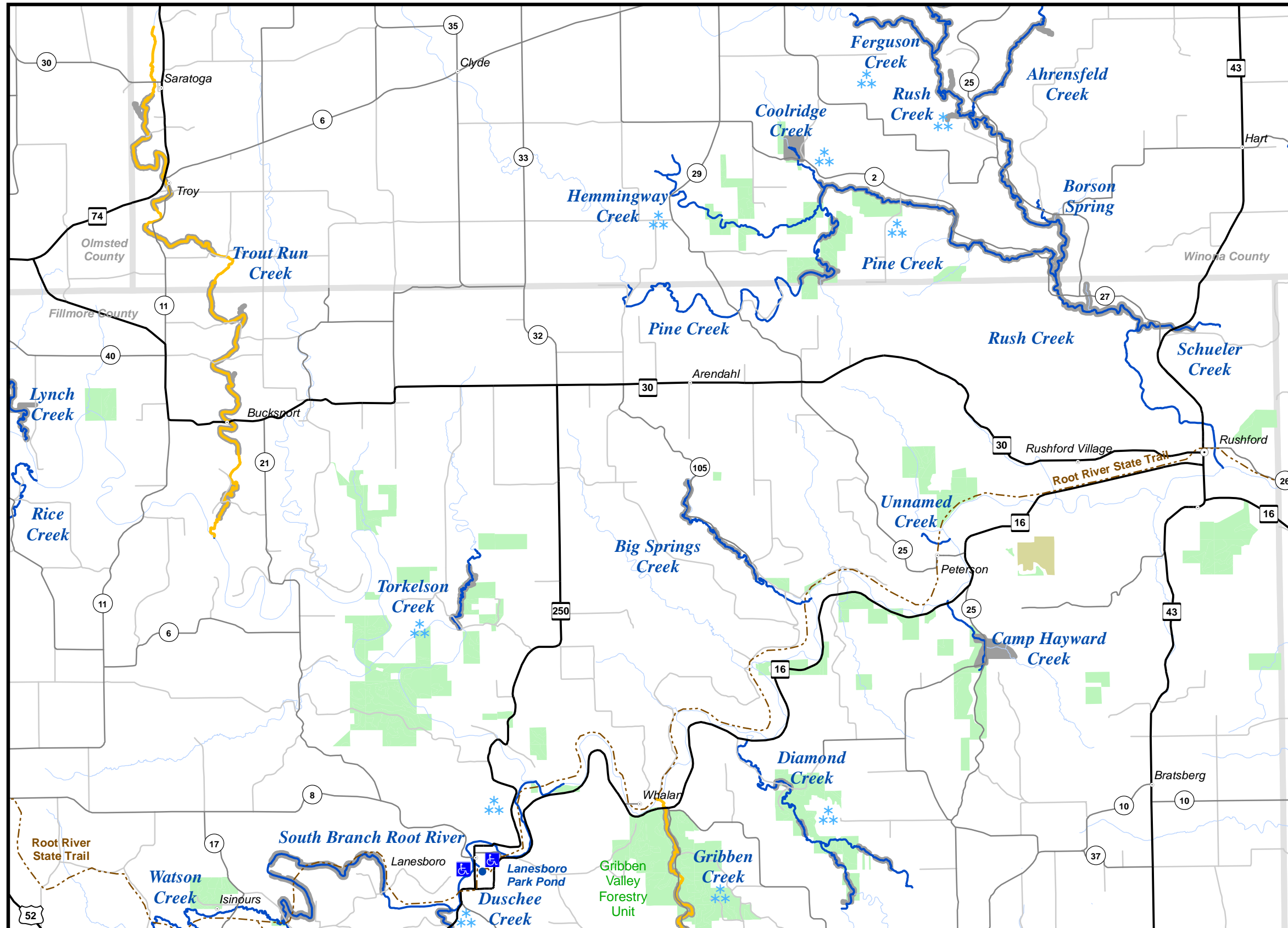
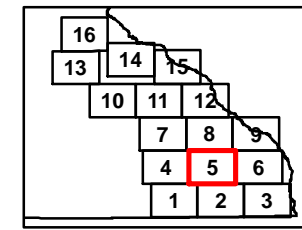


# SE MAP 5



## Map 5 Species Managed

Stream Name	Species Managed
Ahrensfeld Creek (W)	Brown, Brook
Big Springs Creek (W)	Brown
Borson Spring	Brown
Camp Hayward Creek (W)	Brown, Brook
Coolridge Creek (W)	Brook, Brown
Diamond Creek (W)	Brown, Brook
Duschee Creek	Brown, Brook, Rainbow
Gribben Creek (W)	Brown
Hemmingway Creek (W)	Brook, Brown
Lanesboro Park Pond (Sylvan Park)	Rainbow
Pine Creek	Brown, Brook
Rush Creek	Brown, Rainbow
Schueler Creek (W)	Brown
South Branch Root River	Brown, Rainbow
Torkelson Creek (W)	Brown
Trout Run Creek (W)	Brown
Unnamed Creek	Not actively managed
Rice Creek	Brown
Watson Creek	Brown

(W) Wild trout population

## Legend

- Accessible Fishing Site
- Winter Catch & Release Season  
January 1 - March 31 as Posted  
Check Current Regulations
- State Trails
- Streams
- Designated Trout Streams
- 12 to 16 Inch Protected Slot for All Trout  
(Artificial Lures or Flies Only)
- 12 to 16 Inch Protected Slot for All Trout  
(Bait Allowed)
- 12 Inch Minimum for Brook Trout,  
Bag Limit of 1 (Artificial Lures or Flies Only)
- Catch & Release for All Trout  
(Artificial Lures or Flies Only)
- Catch & Release for All Trout  
(Bait Allowed)
- Fishing Access Easement
- Forestry Units
- State Park
- Wildlife Management Areas
- Scientific and Natural Areas

