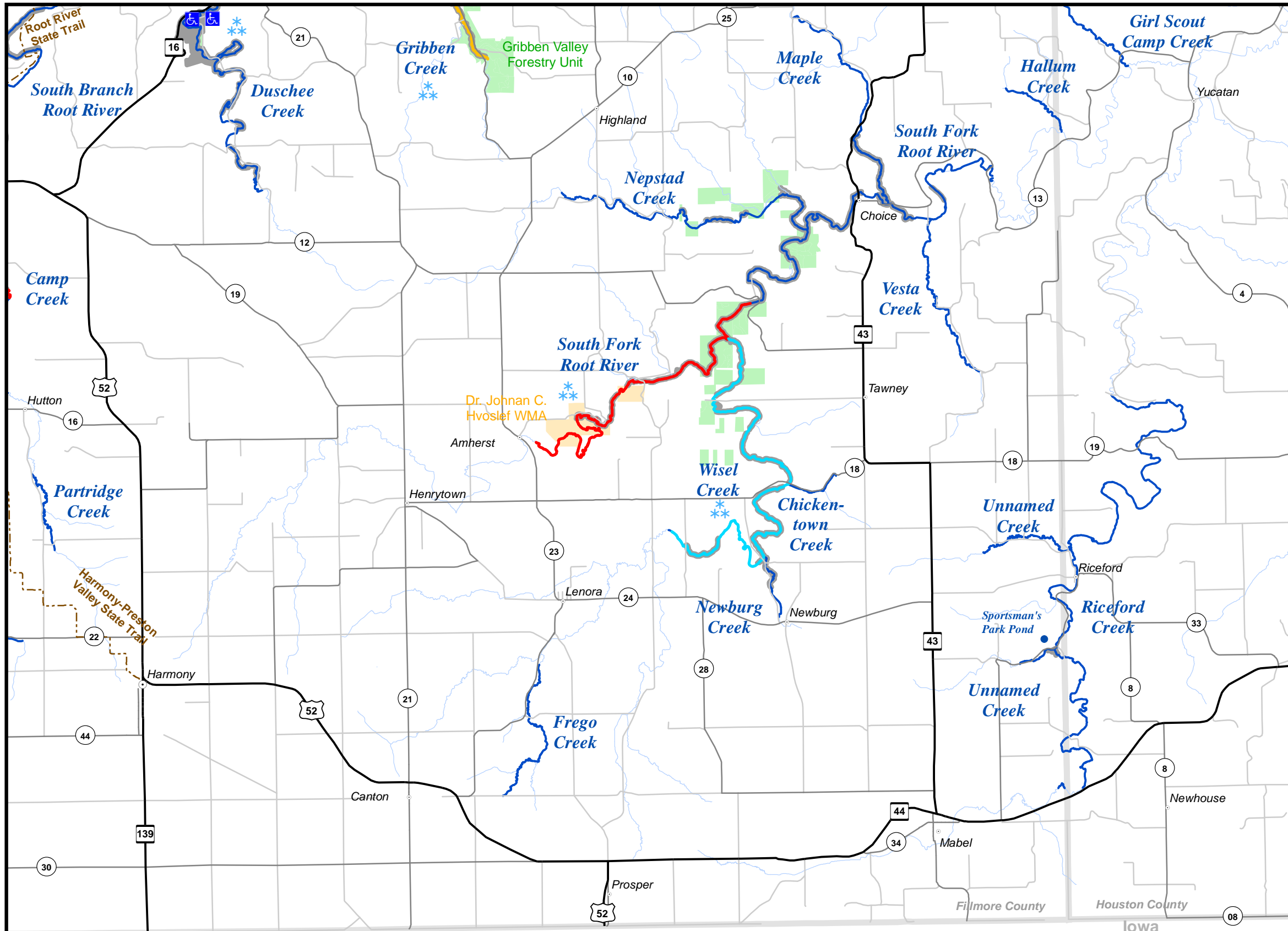
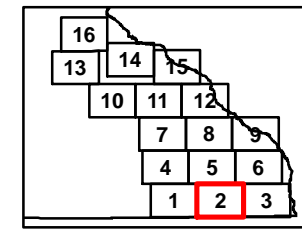


# SE MAP 2



## Map 2 Species Managed

Stream Name	Species Managed
Chickentown Creek (W)	Brook
Duschee Creek	Brook, Brown, Rainbow
Frego Creek (W)	Brown
Girl Scout Camp Creek (W)	Brook
Gribben Creek (W)	Brown
Hallum Creek (W)	Brook
Maple Creek (W)	Brook
Nepstad Creek (W)	Brook, Brown
Newburg Creek (W)	Brook, Brown
Partridge Creek (W)	Brown
Riceford Creek (W)	Brook, Brown
South Branch Root River	Brown, Rainbow
South Fork Root River	Brook, Brown, Rainbow
Sportsman's Park Pond Creek	Rainbow
Unnamed Creek (W)	Brook
Unnamed Creek (W)	Brook
Vesta Creek (W)	Brook
Wisel Creek	Brook, Brown

(W) Wild trout population

### Legend

- Accessible Fishing Site
- Winter Catch & Release Season January 1 - March 31 as Posted Check Current Regulations
- State Trails
- Streams
- Designated Trout Streams
- 12 to 16 Inch Protected Slot for All Trout (Artificial Lures or Flies Only)
- 12 to 16 Inch Protected Slot for All Trout (Bait Allowed)
- 12 Inch Minimum for Brook Trout, Bag Limit of 1 (Artificial Lures or Flies Only)
- Catch & Release for All Trout (Artificial Lures or Flies Only)
- Catch & Release for All Trout (Bait Allowed)
- Fishing Access Easement
- Forestry Units
- State Park
- Wildlife Management Areas
- Scientific and Natural Areas

