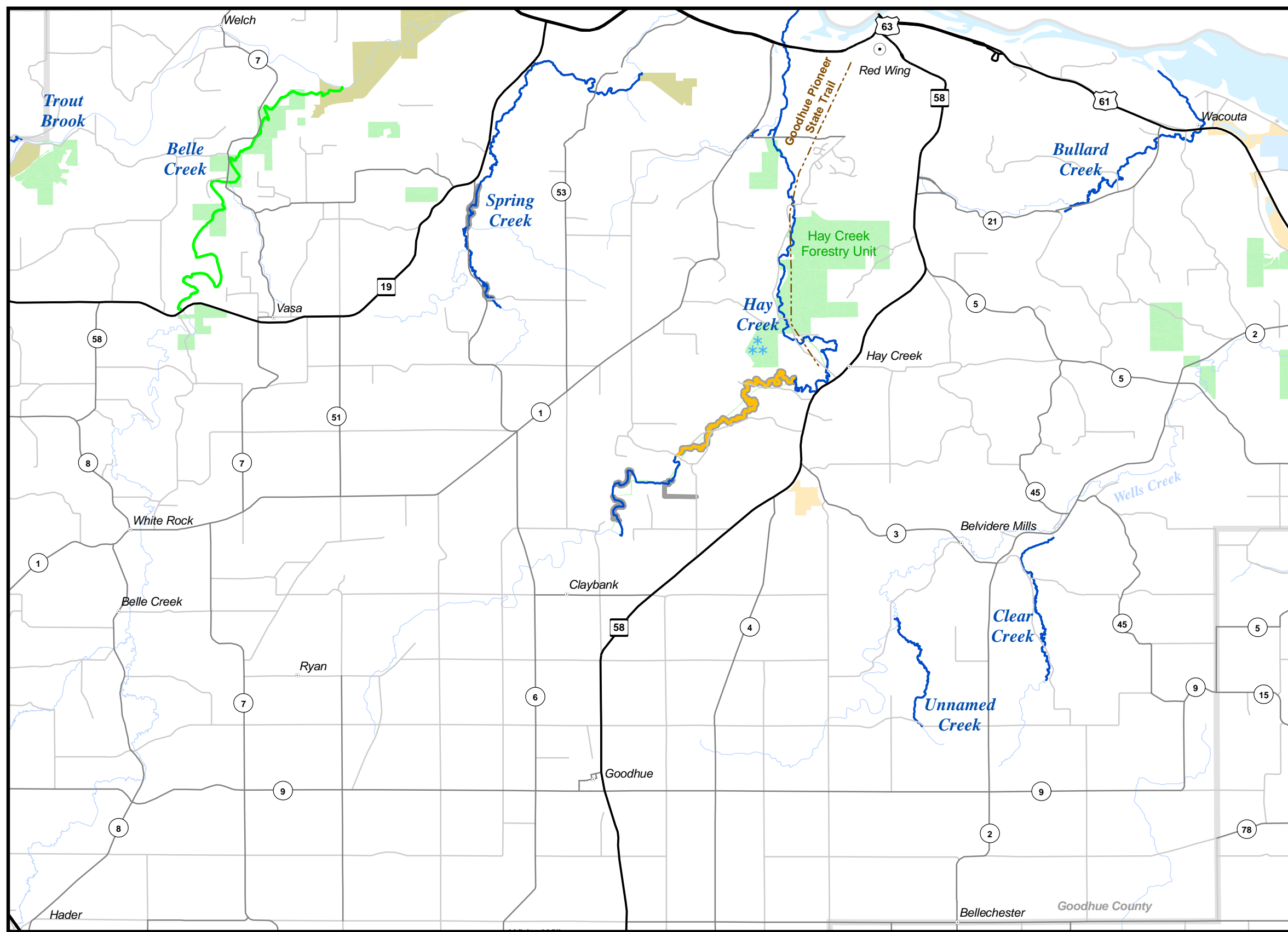
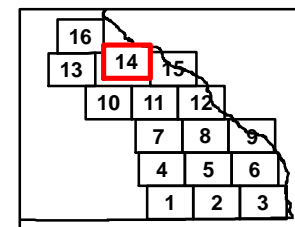


# SE MAP 14



## Map 14 Species Managed

Stream	Species Managed
Belle Creek (W)	Brown
Bullard Creek (W)	Brook, Brown
Clear Creek (W)	Brook
Hay Creek (W)	Brown
Spring Creek	Brown, Brook
Trout Brook (W)	Brown, Brook
Unnamed Creek (W)	Brook

(W) Wild trout population

### Legend

- Accessible Fishing Site
- Winter Catch & Release Season  
January 1 - March 31 as Posted  
Check Current Regulations
- State Trails
- Streams
- Designated Trout Streams
- 12 to 16 Inch Protected Slot for All Trout  
(Artificial Lures or Flies Only)
- 12 to 16 Inch Protected Slot for All Trout  
(Bait Allowed)
- 12 Inch Minimum for Brook Trout,  
Bag Limit of 1 (Artificial Lures or Flies Only)
- Catch & Release for All Trout  
(Artificial Lures or Flies Only)
- Catch & Release for All Trout  
(Bait Allowed)
- Fishing Access Easement
- Forestry Units
- State Park
- Wildlife Management Areas
- Scientific and Natural Areas

