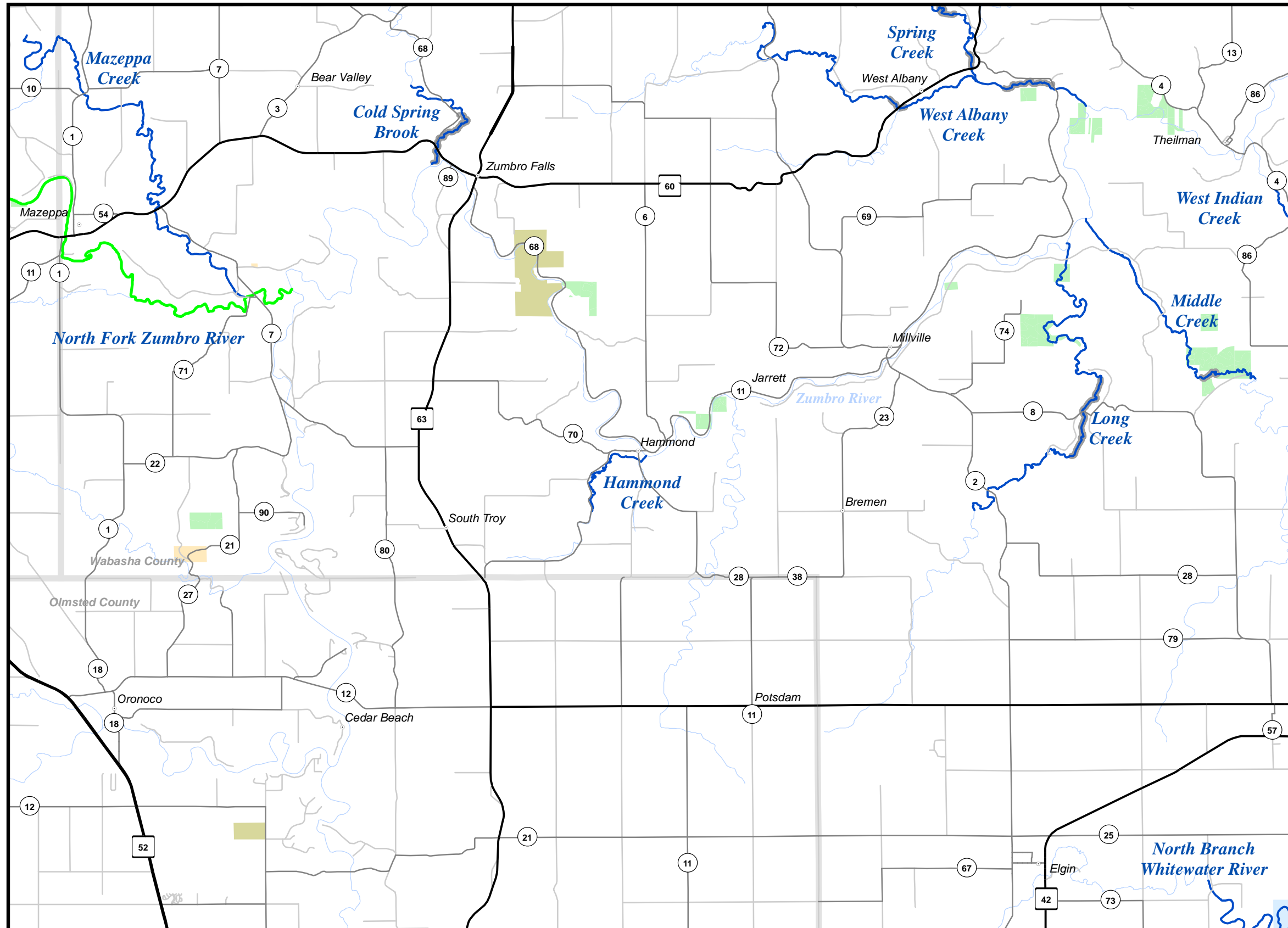
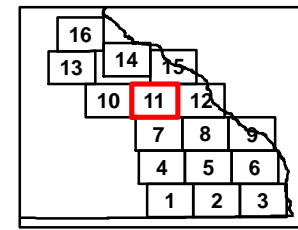


# SE MAP 11



## Map 11 Species Managed

Water Body	Species Managed
Cold Spring Brook (W)	Brook, Brown
Hammond Creek (W)	Brook, Brown
Long Creek (W)	Brown
Mazeppa Creek (W)	Brown
Middle Creek (W)	Brook, Brown
North Fork Zumbro River (W)	Brown
Spring Creek (W)	Brown
West Albany Creek (W)	Brown
West Indian Creek (W)	Brown
North Branch Whitewater	Brown (W), Rainbow

(W) Wild trout population

## Legend

- Accessible Fishing Site
- Winter Catch & Release Season  
January 1 - March 31 as Posted  
Check Current Regulations
- State Trails
- Streams
- Designated Trout Streams
- 12 to 16 Inch Protected Slot for All Trout  
(Artificial Lures or Flies Only)
- 12 to 16 Inch Protected Slot for All Trout  
(Bait Allowed)
- 12 Inch Minimum for Brook Trout,  
Bag Limit of 1 (Artificial Lures or Flies Only)
- Catch & Release for All Trout  
(Artificial Lures or Flies Only)
- Catch & Release for All Trout  
(Bait Allowed)
- Fishing Access Easement
- Forestry Units
- State Park
- Wildlife Management Areas
- Scientific and Natural Areas

