



**LAND O' LAKES STATE FOREST**  
51,500 ACRES • ESTABLISHED 1933

**EMILY STATE FOREST**  
640 ACRES • ESTABLISHED 1963

**FOREST LANDSCAPE:** With rolling terrain and many lakes and rivers, these scenic forests are popular with hunters, off-highway vehicle riders, mountain bikers, cross-country skiers, and hikers.

**A WORKING FOREST:** From year to year, you may see changes in these forests. The DNR manages the forests, water, and wildlife in state forests to keep them healthy and meet recreational, environmental, and economic goals. Trees are harvested to make a variety of products, such as lumber and building materials, pulp for making paper, pallets, fencing, and telephone poles. Through careful planning, harvesting, and planting, land managers work to improve wildlife habitat. The DNR manages state forests for everyone to use, while preventing wildfires and ensuring forests continue to keep air and water clean.

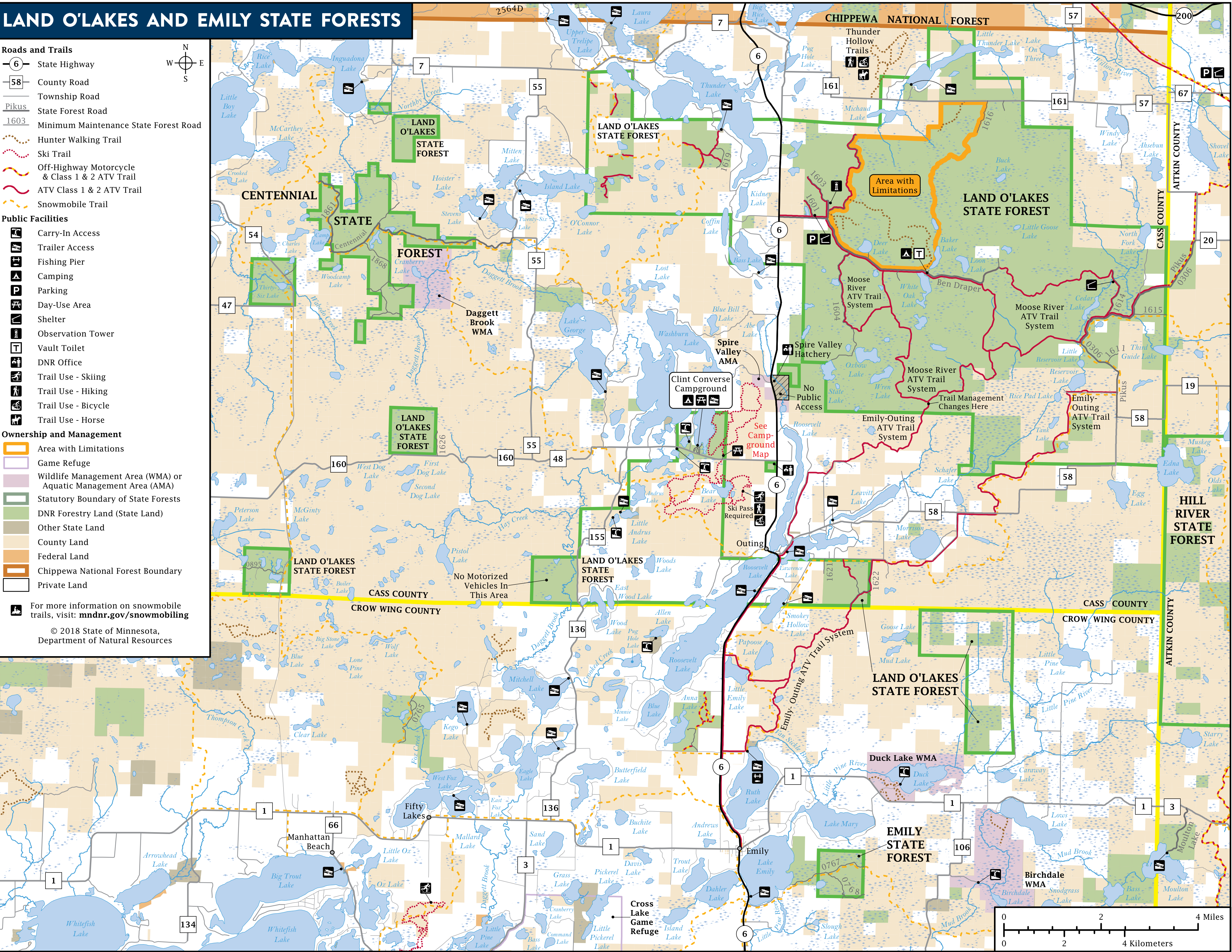
**HISTORY:** Archeological evidence suggests that American Indians used this land as early as 800 BCE. The Ojibwe were the last tribe to inhabit the area in camps located at Ogema Beach on Roosevelt Lake, on the shores of Lake Dahler, and in the forest. Between 1880 and 1890, large logging companies like the Pine Tree Lumber Company, a Weyerhaeuser organization, worked the area, removing the last of the virgin white and red pine around 1907. Workers logged in the winter, sending timber by horse-drawn sleigh to rivers that floated logs downstream to sawmills. Logs were also carried by train. Observant explorers may find old railroad grades and spur lines (removed in 1911). Later, large piles of branches would burn in great conflagrations, hindering regrowth. Since the 1930s, better forest management and tools such as the Draper Fire Tower have prevented major fires from recurring.

**TREES:** Aspen and birch dominate the landscape, with patches of red and white pine and northern red oak. You may also find ash, alder, willow, tamarack, and black spruce in lowland areas. Berries of all varieties can be found in the woods, and wild rice is present in wetland areas.

**WILDLIFE:** Game species include white-tailed deer, black bear, ruffed grouse, waterfowl, and wild turkey. Other species include gray wolf, beaver, mink, muskrat, otter, common loon, wood frog, and several species of warblers.

**PUT THIS MAP ON YOUR DEVICE**  
This map is geo-referenced. Download an app such as the free Avenza app on your device and use it to open the geoPDF. The app will place a blue locator dot on the map wherever you take your device, even if you are out of cellular range.

The information in this map is dynamic and may change over time. The Minnesota DNR is not liable for improper or incorrect use of the data described and/or contained. The data and related graphics are not legal documents, and are protected by copyright.





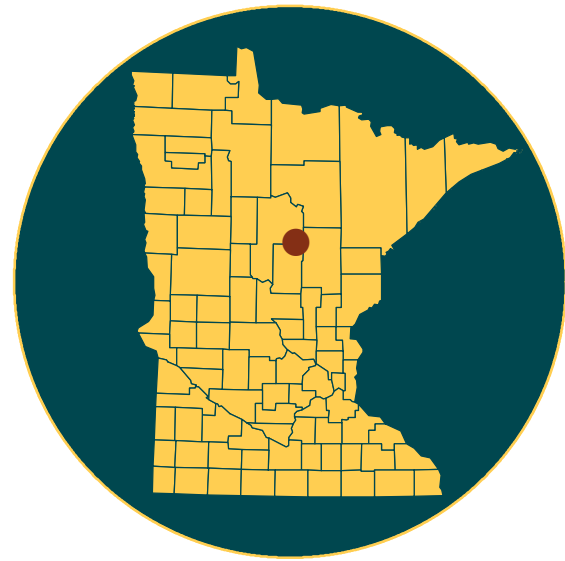


## GENERAL STATE FOREST RULES

Whether you are camping, hunting, riding, geocaching, skiing, or gathering berries, take care to leave the forest in good condition.

- Forest lands are open to visitors at all times unless otherwise posted closed.
- Summer camping on state forest land is limited to 14 days. Winter camping is limited to 21 days between the second Sunday in September and the first Saturday in May.
- Pack out what you pack in. Remove all personal property. Do not burn litter or garbage.
- Don't leave equipment unattended for more than 24 hours.
- Building any permanent structures, including deer stands, is prohibited.
- Use firewood sold by the DNR, or harvested in Minnesota and certified by the Minnesota Department of Agriculture or USDA, or from vendors who harvested firewood in the same county as the state forest. Bring your receipt. You may also collect dead fuelwood on site. Kiln-dried, unstained, unpainted dimensional lumber free from metal or other foreign objects is also permitted. It is illegal to bring in any other firewood. These rules are to prevent accidentally introducing harmful pests such as emerald ash borer.  
**[mndnr.gov/firewood](http://mndnr.gov/firewood)**
- Fireworks are prohibited on all state, county, and federal lands.
- Keep campfires no larger than 3 feet wide and 3 feet high. Attend the fire at all times. Completely extinguish fires before leaving the area. It should be cold to the touch.
- Bury human waste (if toilets are not available) and animal parts such as fish guts at least 150 feet from a water body and away from areas where it could cause a nuisance or hazard to public health.
- Wild rice, Minnesota's state grain, may be harvested when ripe unless posted otherwise. Collecting wild rice requires a license. **[mndnr.gov/regulations/wildrice](http://mndnr.gov/regulations/wildrice)**
- Collecting berries, mushrooms, or dead fuelwood for personal use while in the forest is OK. However, collecting large amounts of these items, including decorative timber products, to take home for personal use or sale requires a permit from your local DNR forestry office.  
**[mndnr.gov/areas/forestry](http://mndnr.gov/areas/forestry)**
- This is a partial list of rules. For more information, visit the website listed below.

# LAND O' LAKES AND EMILY STATE FORESTS



## CAMPING

### CLINT CONVERSE CAMPGROUND AND DAY-USE AREA

The campground area was used as a CCC camp in 1934. Today the campground is named after Clinton Converse, who was the forest ranger at Washburn Lake for 27 years and instrumental in establishing the campground. This campground on Washburn Lake has 31 campsites, 4 toilets, and drinking water, along with a dock, boat access, fishing, and swimming. Off-highway vehicles are allowed to access the campground using exiting routes. First-come, first-served. Fee charged.

### DISPERSED CAMPING

Dispersed camping with no amenities or fees is allowed on state forest and federal land that is at least 1 mile away from a designated campground. On Wildlife Management Areas, camping is allowed only with a permit from the DNR wildlife manager.

Dispersed campsites on White Oak and Baker lakes off of Draper Forest Road are accessible from the Moose River ATV Trail and are popular with all-terrain vehicle riders in the summer. Toilet on site.

## BOATING

This area contains many boat landings, especially in the lakes near Outing.

Register your watercraft at

**[mndnr.gov/licenses/watercraft](http://mndnr.gov/licenses/watercraft)**

## TRAILS

All trails and roads are open to hunting, hiking, mountain biking, fat biking, and horseback riding, unless posted closed for that use.

Off-trail hiking, cross-country skiing, and snowshoeing are allowed.

### WASHBURN LAKE HIKING AND SKI TRAILS

Extending from the Clint Converse Campground, hikers and cross-country skiers can find solitude on 15 miles of trails in six different loops. Ski trails are groomed, and rated easy to difficult. Minnesota Ski Pass required. **[mndnr.gov/licences/skipass](http://mndnr.gov/licences/skipass)**

### THUNDER HOLLOW – CASS COUNTY

This 4.2-mile hunter hiking trail system is adjacent to the Land O'Lakes State Forest and winds through hilly, forested terrain. Open year round. Other uses include biking and horseback riding.

### SNOWMOBILE TRAILS

Winter visitors can enjoy many miles of marked and groomed snowmobile trails in Emily State Forest and near the Land O' Lakes State Forest. These trails provide groomed routes between Emily, Outing, the Chippewa National Forest, and the Hill River State Forest.

Snowmobile trails are open December 1 through April 1. Some parts of the trail may be groomed and other parts may be plowed for logging activities—use caution in these areas. Trails are marked with orange signs.

- Snowmobile trail maps: **[mndnr.gov/snowmobiling/interactive\\_map](http://mndnr.gov/snowmobiling/interactive_map)**
- Snowmobiles must be registered.  
**[mndnr.gov/regulations/snowmobile](http://mndnr.gov/regulations/snowmobile)**

### OFF-HIGHWAY VEHICLE TRAILS

#### Moose River ATV Trails

This popular 29-mile multipurpose trail system is open year-round to all-terrain vehicles (ATVs). The trail connects the Emily-Outing Trails in the south to the Soo Line North Trail in the northeast. Riders may use an assembly area on the west end of Draper Forest Road. Open year-round, unless posted closed.

**[mndnr.gov/maps/ohv/moose\\_river.pdf](http://mndnr.gov/maps/ohv/moose_river.pdf)**

#### Emily to Outing Trail – Crow Wing County

This 30-mile trail travels through rocky and hilly to flat terrain and connects the towns of Emily and Outing with the Moose River ATV trail system. Open May 1 through October 31 to off-highway vehicle (OHV) riders, hunters, horseback riders, and hikers. Yield to horses. No recreational OHV travel during firearms deer hunting season.

**[crowwing.us/698/MotorizedMulti-Use-Trails](http://crowwing.us/698/MotorizedMulti-Use-Trails)**

#### CLASSIFICATION: LIMITED

All trails on state-administered lands are classified regarding motor vehicles. Both the Land O' Lakes and Emily state forests are classified as "limited," which means roads and trails are closed unless posted open. Highway-licensed vehicles are allowed on all state forest roads.

No motorized use is allowed off roads and trails except when needed to retrieve big game when hunting and trapping during the proper season and with the proper license.

#### Classification: Managed–Crow Wing County

Unless posted otherwise, trails on Crow Wing County lands are "Managed," which means

that highway-licensed vehicles and OHVs are allowed on roads, routes, and designated trails. ATV traffic off roads, routes, and designated trails is prohibited, except when needed to retrieve big game during the proper season and with the proper license.

#### KNOW YOUR VEHICLE

Always make sure you are riding on the appropriate trail, designated and signed for your vehicle. OHVs must be registered in Minnesota or have a trail pass.

**[mndnr.gov/licenses/ohv](http://mndnr.gov/licenses/ohv)**

## HUNTING AND TRAPPING

Hunting and trapping is allowed on state forest land and in Wildlife Management Areas (WMAs) in the appropriate season, with the appropriate license. For trapping in WMAs, get permits from the area DNR wildlife office. **[mndnr.gov/hunting](http://mndnr.gov/hunting)**

#### FIREARMS AND BOWS

Firearms must be unloaded and cased while in or within 200 feet of a forest recreation area (campground, day-use area, parking area) except that during open hunting seasons, licensed hunters may carry an unloaded, uncased firearm or a strung, uncased bow to hunt outside the area.

Cutting shooting lanes is not allowed on any state or federal land.

Building any permanent structures, including deer stands, is prohibited.

For regulations about hunting, trapping, firearms, bows, limits, seasons, and deer stands on state-managed land, visit **[mndnr.gov/regulations/hunting](http://mndnr.gov/regulations/hunting)**

## WILDLIFE MANAGEMENT AREAS

Wildlife Management Areas (WMAs) are managed to provide quality wildlife habitat for a variety of species. WMAs provide opportunities for public hunting, trapping,

fishing, and wildlife observation. Hunting is allowed with the proper license and during the proper season in all WMAs.

#### DUCK LAKE WMA

Duck Lake WMA was established in 1953 to improve wetland habitat for waterfowl and furbearers. Upland areas are forested with aspen, black spruce, and northern hardwoods. Water access to Duck Lake is for carry-in canoes only. This lake is popular for both wild rice harvesting and waterfowl hunting; licenses required for both uses. More than 2 miles of hunter walking trails are on this unit.

WMA maps: **[mndnr.gov/maps/compass](http://mndnr.gov/maps/compass)**

WMA information: **[mndnr.gov/wmas](http://mndnr.gov/wmas)**

#### AQUATIC MANAGEMENT AREAS

Aquatic Management Areas (AMAs) provide water access to anglers and managers, while protecting critical shoreland habitat and providing areas for education and research. AMA rules are similar to WMA rules.

**[mndnr.gov/amas](http://mndnr.gov/amas)**

#### FISHING

Anglers may fish in area lakes. There are no special provisions or restrictions on fishing in state and national forests. You must have the proper license and abide by the same rules and seasons as anywhere else in Minnesota.

Avoid spreading invasive organisms such as zebra mussel larvae or Eurasian water milfoil by not transporting lake or river water, including in bait buckets. Dispose of or pack out unused bait and live worms in trash containers where they can't reach water or soil.

Visit **[mndnr.gov/fishing](http://mndnr.gov/fishing)** for up-to-date regulations.

## RESPECT PRIVATE PROPERTY

Many state forests contain private land within their boundaries. Watch for posted "No Trespassing" and "No Hunting" signs and stay off private property.

You must have permission before entering private land, even to cross it to access public land.

Trespassing is a misdemeanor. If convicted, you could lose your license to hunt. All conservation and peace officers enforce trespass laws.

#### KNOW WHERE YOU ARE

This area contains a patchwork of state-managed land within areas of federal- and county-managed, and private land. Rules may change as you cross boundaries.

For information about hunting, off-highway vehicle use, snowmobiling, camping, and other recreation, visit:

- Cass County: [www.co.cass.mn.us](http://www.co.cass.mn.us)
- Crow Wing County: [www.crowwing.us](http://www.crowwing.us)

#### ALWAYS STAY ON SIGNED TRAILS

Whether you're riding or walking, tread lightly on the land. Be courteous to others, respect private property, and obey the law.

#### AREAS WITH LIMITATIONS

These areas are designated to protect unique natural resources and provide other non-motorized recreation opportunities. Motorized vehicles may not operate off designated trails within "Areas With Limitations" for any reason, including retrieving big game.

## LEAVE TROUBLE BEHIND

Help prevent the spread of invasive plants and animals.

- Clean your gear before entering and leaving the recreation site.
- Remove mud, seeds, and plants from clothes, pets, boots, gear, vehicles, and watercraft.
- Stay on designated trails.
- **[PlayCleanGo.org](http://PlayCleanGo.org)**



STATE FORESTS MAP  
AND EMILY  
LAND O' LAKES  
DEPARTMENT OF  
NATURAL RESOURCES

## FOR MORE INFORMATION

Minnesota Department of Natural Resources  
[info.dnr@state.mn.us](mailto:info.dnr@state.mn.us)

651-296-6157 | 888-646-6367

TDD (Telecommunications Device for the Deaf)  
651-296-5484 | 800-657-3929

### DNR TIP LINE (Turn in Poachers)

800-652-9093

## EMERGENCY SERVICE - DIAL 911

### CASS COUNTY SHERIFF

218-547-1424

### CROW WING COUNTY SHERIFF

218-829-4749

### STATE PATROL DISPATCH

651-582-1543

## NEAREST HOSPITAL SERVICES

County Range Hospital

Crosby, MN 55731

218-546-7000

The Minnesota DNR prohibits discrimination in its programs and services based on race, color, creed, religion, national origin, sex, public assistance status, age, sexual orientation or disability. Persons with disabilities may request reasonable modifications to access or participate in DNR programs and services by contacting the DNR ADA Title II Coordinator at [info.dnr@state.mn.us](mailto:info.dnr@state.mn.us) or 651-296-6157. Discrimination inquiries should be sent to Minnesota DNR, 500 Lafayette Road, St. Paul, MN 55155-4049; or Office of Civil Rights, U.S. Department of the Interior, 1849 C Street NW, Washington, D.C. 20240.

© 2018, State of Minnesota, Department of Natural Resources

Printed on Minnesota-made paper containing a minimum of 10 percent post-consumer waste.

FSC logo

FORESTRY  
500 Lafayette Road, St. Paul, MN 55155  
888-646-6367  
[mndnr.gov](http://mndnr.gov)



**[mndnr.gov/forestrules](http://mndnr.gov/forestrules)**

SCAN TO  
DOWNLOAD  
MAP

