



**GOLDEN ANNIVERSARY STATE FOREST**  
7,288 ACRES • ESTABLISHED 1961

**REMER STATE FOREST**  
12,851 ACRES • ESTABLISHED 1963

**FOREST LANDSCAPES:** These forests are located on gently rolling hills in north central Minnesota and are used mainly to produce timber and provide wildlife habitat and opportunities for hunting. The Golden Anniversary State Forest is a popular destination for cross-country skiing.

**A WORKING FOREST:** From year to year, you may see changes in these forests. The DNR manages the trees, water, and wildlife in state forests to keep them healthy and meet recreational, environmental, and economic goals. Trees are harvested to make a variety of products, such as lumber and building materials, pulp for making paper, pallets, fencing, and telephone poles. Through careful planning, harvesting, and planting, land managers work to improve wildlife habitat. The DNR manages state forests for everyone, while preventing wildfires and ensuring forests continue to keep air and water clean.

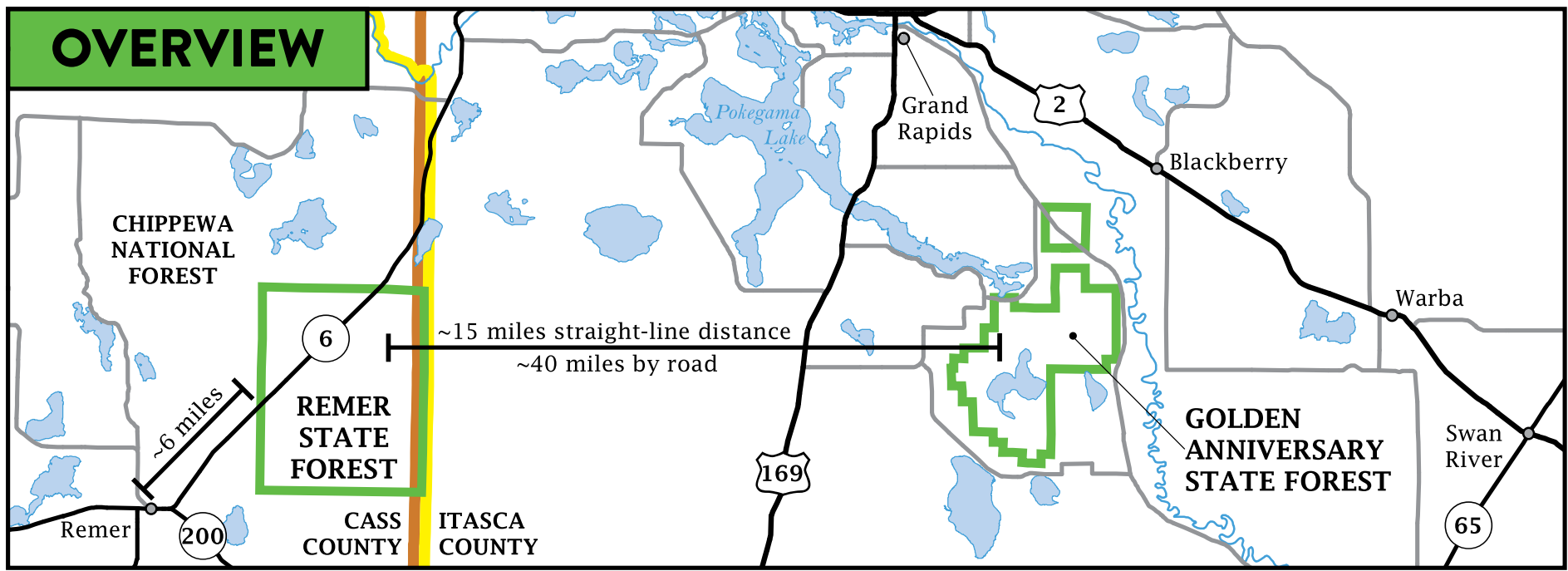
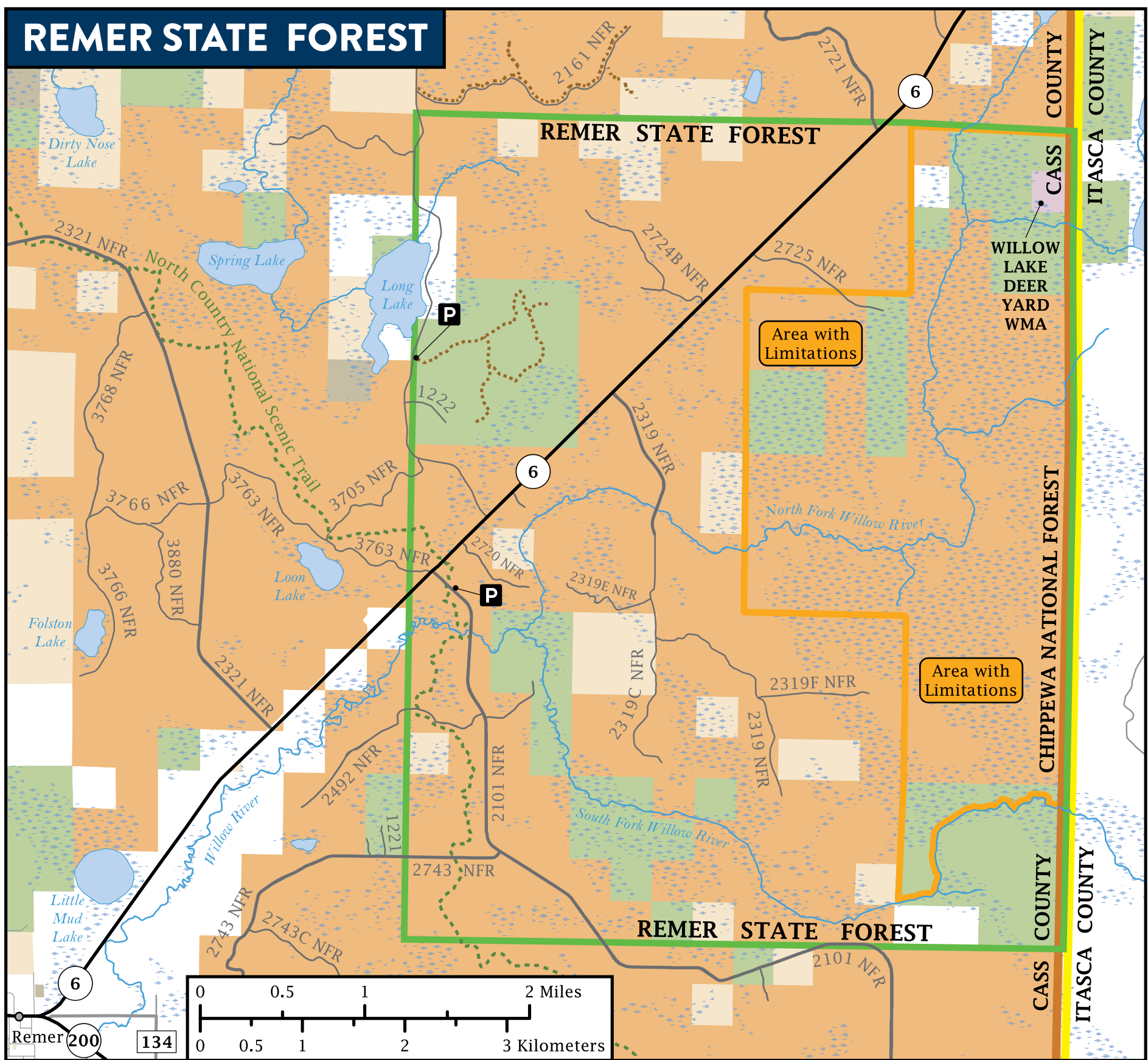
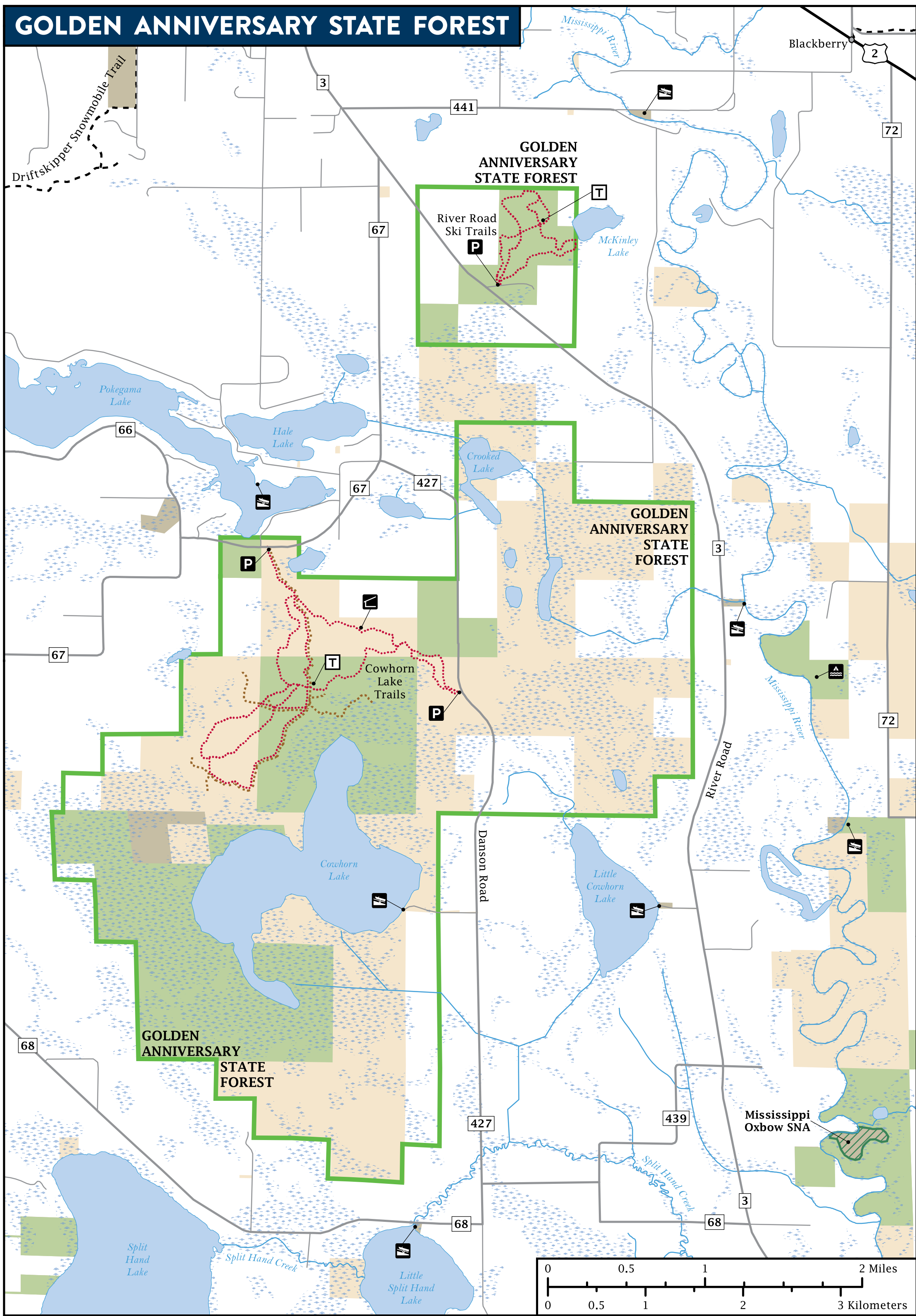
**HISTORY:** Glaciers receding 10,000 years ago left behind the sediment and till that make up the landscape's gently rolling hills. Swamps are common in low-lying wet areas, while other parts of the forests drain into the Mississippi River. Both forests were heavily logged between 1880 and 1920. During World War II, some parts of Remer State Forest may have been planted by German prisoners of war who were housed at a repurposed Civilian Conservation Corps camp outside the city of Remer. The Golden Anniversary State Forest was established in 1961, 50 years after the creation of the Minnesota Forest Service, which had in 1931 changed its name to the Division of Forestry and moved into the Minnesota Department of Natural Resources.

**TREES:** Aspen, maple, ash, oak, and balsam fir cover much of the forest. White, red, and jack pine grow on sandier soils. Other conifers include spruce, cedar, and tamarack.

**WILDLIFE:** Wildlife includes white-tailed deer, black bear, ruffed grouse, woodcock, waterfowl, gray wolf, bobcat, beaver, fisher, pine marten, snowshoe hare, otter, mink, muskrat, trumpeter swan, and eagle.

**PUT THIS MAP ON YOUR DEVICE**  
Download this map on your mobile phone or tablet to track your current location. Visit [mndnr.gov/geopdf](https://mndnr.gov/geopdf) for more information.

The information in this map is dynamic and may change over time. The Minnesota DNR is not liable for improper or incorrect use of the data described and/or contained. The data and related graphics are not legal documents, and are protected by copyright.



Roads and Trails		Public Facilities		Ownership and Management	
	U.S. Highway		Trailer Access		Area with Limitations
	State Highway		Watercraft Campsite		Scientific and Natural Area (SNA)
	County Road		Shelter		Wildlife Management Area (WMA)
	Other Road		Vault Toilet		Statutory Boundary of State Forest
	U.S. Forest Service Road (Passenger Vehicles)		Parking		DNR Forestry Land (State Land)
	U.S. Forest Service Road (High Clearance Vehicles)				Other State Land
	Minimum Maintenance State Forest Road				County Land
					Federal Land
					Chippewa National Forest Boundary
					Private Land

NFR = National Forest Road

© 2019 State of Minnesota, Department of Natural Resources

For more information on snowmobile trails, visit: [mndnr.gov/snowmobiling](https://mndnr.gov/snowmobiling)

N  
E  
S  
W





### GENERAL STATE FOREST RULES

Whether you are camping, hunting, riding, geocaching, skiing, or gathering berries, take care to leave the forest in good condition.

- Forest lands are open at all times unless otherwise posted closed.
- Pack out what you pack in. Remove all personal property. Do not burn litter or garbage.
- Don't leave equipment unattended for more than 24 hours.
- Building any permanent structures, including deer stands, is prohibited.
- Use firewood purchased from vendors who harvested firewood in the same county as the state forest or harvested in Minnesota and certified by the Minnesota Department of Agriculture or USDA. Bring your receipt. You may also collect dead fuelwood on site. Kiln-dried, unstained, unpainted dimensional lumber free from metal or other foreign objects is also permitted. It is illegal to bring in any other firewood. These rules are to prevent accidentally introducing harmful pests such as emerald ash borer. [mndnr.gov/firewood](https://mndnr.gov/firewood)
- Fireworks are prohibited on all state, county, and federal lands.
- Keep campfires no larger than 3 feet wide and 3 feet high. Attend the fire at all times. Completely extinguish fires before leaving the area. It should be cold to the touch.
- Bury human waste (if toilets are not available) and animal parts such as fish guts at least 150 feet from a water body and away from areas where it could cause a nuisance or hazard to public health.
- We don't require a permit to collect berries, mushrooms, or dead fuelwood for personal use while in the forest. However, collecting large amounts of these items to take home for personal use or sale requires a permit. Get permits from your local DNR forestry office. [mndnr.gov/areas/forestry](https://mndnr.gov/areas/forestry)
- Wild rice, Minnesota's state grain, may be harvested when ripe unless posted otherwise. Collecting wild rice requires a license. [mndnr.gov/regulations/wildrice](https://mndnr.gov/regulations/wildrice)
- This is a partial list of rules. For more information, visit the website listed below.

[mndnr.gov/forestrules](https://mndnr.gov/forestrules)

# GOLDEN ANNIVERSARY AND REMER STATE FORESTS



### DISPERSED CAMPING

Dispersed camping with no amenities or fees is allowed in state and federal forests at least one mile outside of a designated campground. Summer camping on state forest land is limited to 14 days. Winter camping is limited to 21 days between the second Sunday in September and the first Saturday in May.

There are no developed campgrounds within these state forests.

### BOATING

Several boat accesses are located in the area including on the Mississippi River and Cowhorn Lake.

Register your watercraft at [mndnr.gov/licenses/watercraft](https://mndnr.gov/licenses/watercraft)

### TRAILS

Hiking is allowed on state and federal forest trails and roads. Off-trail hiking, skiing, and snowshoeing are allowed in winter.

#### SKI TRAILS

The Golden Anniversary has two popular ski trails: Cowhorn Lake (12.6 km) and River Road (6.2 km). Great Minnesota Ski Pass required.

[mndnr.gov/licenses/skipass](https://mndnr.gov/licenses/skipass)

#### SNOWMOBILE TRAILS

These state forests are near several miles of marked, groomed snowmobile trails.

Snowmobile trails are open between December 1 and March 31. Some parts of the trail may be groomed and other parts may be plowed for logging activities. Trails are marked with orange signs.

- Visit [mndnr.gov/snowmobiling/interactive\\_map](https://mndnr.gov/snowmobiling/interactive_map) for maps.
- Snowmobiles must be registered. [mndnr.gov/regulations/snowmobile](https://mndnr.gov/regulations/snowmobile)

### OFF-HIGHWAY VEHICLE CLASSIFICATION: LIMITED

All trails on state-managed lands are classified regarding motor vehicles. These forests are classified as “limited,” allowing OHVs, all-terrain vehicles (ATVs), and off-highway motorcycles on signed and mapped routes open for that type of OHV use. Off-road traffic is prohibited, except when needed to retrieve big game when hunting and trapping during the proper season and with the proper license.

[mndnr.gov/regulations/ohv](https://mndnr.gov/regulations/ohv)

- There are no designated off-highway vehicle (OHV) trails in these forests.
- ATVs, off-road vehicles (ORVs), and OHMs must be registered. [mndnr.gov/licenses/ohv](https://mndnr.gov/licenses/ohv)
- Highway-licensed vehicles are allowed on all state forest roads.
- Wildlife Management Areas are closed to ATVs and ORVs.

#### OHV USE IN CHIPPEWA

#### NATIONAL FOREST

OHV riders may use federal forest roads that are posted open.

### HUNTING AND TRAPPING

State forests provide opportunities for hunting and trapping. In the appropriate season, licensed hunters can hunt for big and small game. [mndnr.gov/hunting](https://mndnr.gov/hunting)

#### FIREARMS AND BOWS

Firearms must be unloaded and cased and bows must be cased while in or within 200 feet of any recreation area (campground, day-use area, parking area, boat launch, etc.). Cutting shooting lanes is not allowed on any state or federal land.

Building permanent structures, including deer stands, is prohibited.

For a complete list of regulations about hunting, trapping, firearms, bows, limits, seasons, and deer stands on state-managed land, visit [mnndr.gov/regulations/hunting](https://mnndr.gov/regulations/hunting)

For regulations about shooting in the Chippewa National Forest, visit [fs.fed.us/visit/know-before-you-go/shooting](https://fs.fed.us/visit/know-before-you-go/shooting)

### FISHING

Anglers may find muskellunge, northern pike, walleye, and panfish in area lakes and the Mississippi River. Some lakes may have special provisions or restrictions on fishing in state and national forests. You must have the proper license and abide by the same rules and seasons as anywhere else in Minnesota.

Avoid spreading invasive organisms such as zebra mussel larvae or spiny waterfleas by not transporting lake or river water, including in bait buckets. Pack out unused bait and live worms or dispose in trash containers where they can't reach water or soil.

Visit [mndnr.gov/fishing](https://mndnr.gov/fishing) for up-to-date regulations.

### WILDLIFE MANAGEMENT AREAS

State Wildlife Management Areas (WMAs) are managed to perpetuate and establish quality wildlife habitat to produce a variety of species, particularly harvestable species, emphasizing wildlife that lives in wetlands and young forests. They are also managed to provide opportunities for public hunting, trapping, and wildlife observation.

WMA maps: [mndnr.gov/maps/compass](https://mndnr.gov/maps/compass)

WMA information: [mndnr.gov/wmas](https://mndnr.gov/wmas)

### SCIENTIFIC AND NATURAL AREAS

Scientific and Natural Areas (SNAs) protect natural features of exceptional scientific or educational value including native plant

communities, rare species, and significant geological features. Visitors may enjoy the undisturbed natural quality of these sites, however, most SNAs have no trails, restrooms, or drinking water. SNAs do not allow camping, vehicles, or collecting plants and animals. SNAs do allow birding and wildlife watching, hiking, photography, snowshoeing, and cross-country skiing.

#### MISSISSIPPI OXBOW SNA

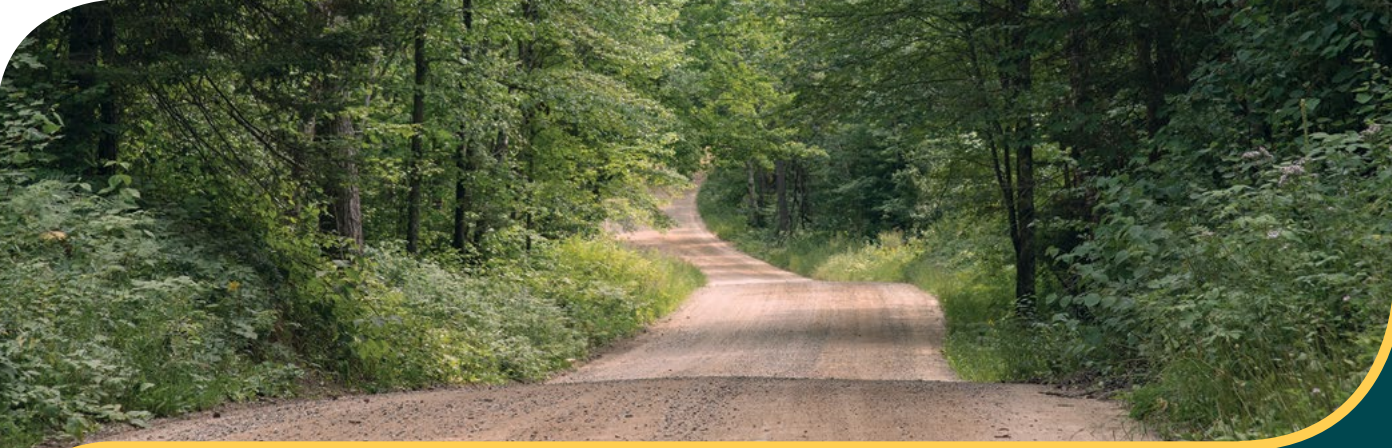
Located just east of the Golden Anniversary State Forest along the Mississippi River, this SNA contains floodplain forest of the highest ecological quality. Approximately one-third floods every spring and contains silver maples. The remaining two-thirds consist of black ash, silver maple, bur oak, and clumps of blue beech, which grow at the very northern extent of its range. Visit this SNA after spring floods recede to listen for birds and look for spring ephemeral wildflowers.

### KNOW WHERE YOU ARE

This area contains a patchwork of state-managed land within areas of federal- and county-managed and private land. Rules may change as you cross boundaries.

For information about hunting, off-highway vehicle use, snowmobiling, camping, and other recreation, visit:

- Chippewa National Forest: [www.fs.usda.gov/chippewa](https://www.fs.usda.gov/chippewa)
- Cass County: [co.cass.mn.us](https://co.cass.mn.us)
- Itasca County: [co.itasca.mn.us](https://co.itasca.mn.us)



### RESPECT PRIVATE PROPERTY

Many state forests contain private land within their boundaries. Watch for posted “No Trespassing” and “No Hunting” signs and stay off private property.

You must have permission before entering private land, even to cross it to access public land.

Trespassing is a misdemeanor. If convicted, you could lose your license to hunt. All conservation and peace officers enforce trespass laws.

### AREAS WITH LIMITATIONS

These areas are designated to protect unique natural resources and provide other non-motorized recreation opportunities. Motorized vehicles may not operate off designated trails within “Areas With Limitations” for any reason, including retrieving big game.

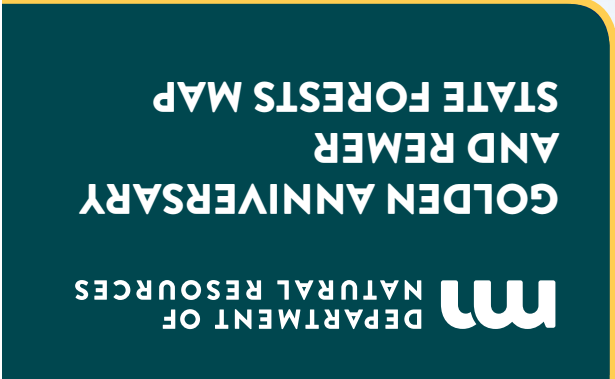
### STAY ON TRAILS

Whether you're riding or walking, tread lightly on the land. Be courteous to others, respect private property, and obey the law.

### LEAVE TROUBLE BEHIND

Help prevent the spread of invasive plants and animals.

- Clean your gear before entering and leaving the recreation site.
- Remove mud, seeds, and plants from clothes, pets, boots, gear, vehicles, and watercraft.
- Stay on designated trails.
- [PlayCleanGo.org](https://www.playcleango.org)



### FOR MORE INFORMATION

Minnesota Department of Natural Resources  
Info.dnr@state.mn.us  
651-296-6157 | 888-646-6367  
TDD (Telecommunications Device for the Deaf)  
651-296-5484 | 800-657-3929

**DNR TIP LINE (Turn in Poachers)**  
800-652-9093

### EMERGENCY SERVICE - DIAL 911

### CASS COUNTY SHERIFF

218-547-1424

### ITASCA COUNTY SHERIFF

218-326-3477

### NEAREST HOSPITAL SERVICES

Grand Itasca Hospital  
1601 Golf Course Road  
Grand Rapids, MN 55744 | 218-326-3401

Essentia Health  
115 10th Ave. NE  
Deer River, MN 56636 | 218-246-2900

The Minnesota DNR prohibits discrimination in its programs and services based on race, color, creed, religion, national origin, sex, public assistance status, age, sexual orientation or disability. Persons with disabilities may request reasonable modifications to access or participate in DNR programs and services by contacting the DNR ADA Title II Coordinator at info.dnr@state.mn.us or 651-296-6157. Discrimination inquiries should be sent to Minnesota DNR, 500 Lafayette Road, St. Paul, MN 55155-4049, or Office of Civil Rights, U.S. Department of the Interior, 1849 C. Street NW, Washington, D.C. 20240.

© 2019, State of Minnesota, Department of Natural Resources

Printed on Minnesota made paper containing a minimum of 10 percent post-consumer waste.

FSC logo

FORESTRY  
500 Lafayette Road, St. Paul, MN 55155  
888-646-6367  
[mndnr.gov](https://mndnr.gov)



SCAN TO DOWNLOAD MAP