



**CHENGWATANA STATE FOREST**  
**29,041 ACRES • ESTABLISHED 1953**

**FOREST LANDSCAPE:** The terrain includes a series of forested upland islands surrounded by marsh and brush. The Kettle, Snake, and St. Croix rivers flow through the forest.

Stands of paper birch and quaking and bigtooth aspen are common. Smaller areas are covered by red, white, and jack pine; balsam fir; white spruce; tamarack; and red and bur oak.

**A WORKING FOREST:** From year to year, you may see changes in this forest. The DNR manages the trees, water, and wildlife in state forests for everyone to keep them healthy and meet recreational, environmental, and economic goals. Trees are harvested to make a variety of products, such as lumber and building materials, pulp for making paper, pallets, fencing, and telephone poles. Through careful planning, harvesting, and planting, land managers create forest openings or plant trees and vegetation to improve habitat for white-tailed deer, ruffed grouse, and waterfowl. The DNR manages state forests to prevent wildfires, and keep our water and air clean.

State forests contain a mix of ownerships within their boundaries. The DNR manages nearly 60 percent of the land in the Chengwatana State Forest. The rest of the land is managed by county, tribal, and private landowners.

**HISTORY:** “Chengwatana” (originally Zhingwaadena) is a loose translation of “white-pine town,” originally named for an Ojibwe village located just east of present-day Pine City along the Snake River. Beginning in the 1800s, the towering white pines in the area attracted loggers. Soon millions of board feet of pine logs were floated down the Kettle, Snake, and St. Croix rivers to large sawmills in Stillwater and other locations.

**WILDLIFE:** Common mammals include white-tailed deer, beaver, muskrat, turkey, and ruffed grouse. More observant trail users may also spot coyotes, timber wolves, weasels, minks, bobcats, or black bears. Nongame birds include northern harriers, red-shouldered hawks, sandhill cranes, bald eagles, and osprey. In the central portion of the forest, trumpeter swans and other waterfowl can be found near a pond created by damming a creek.

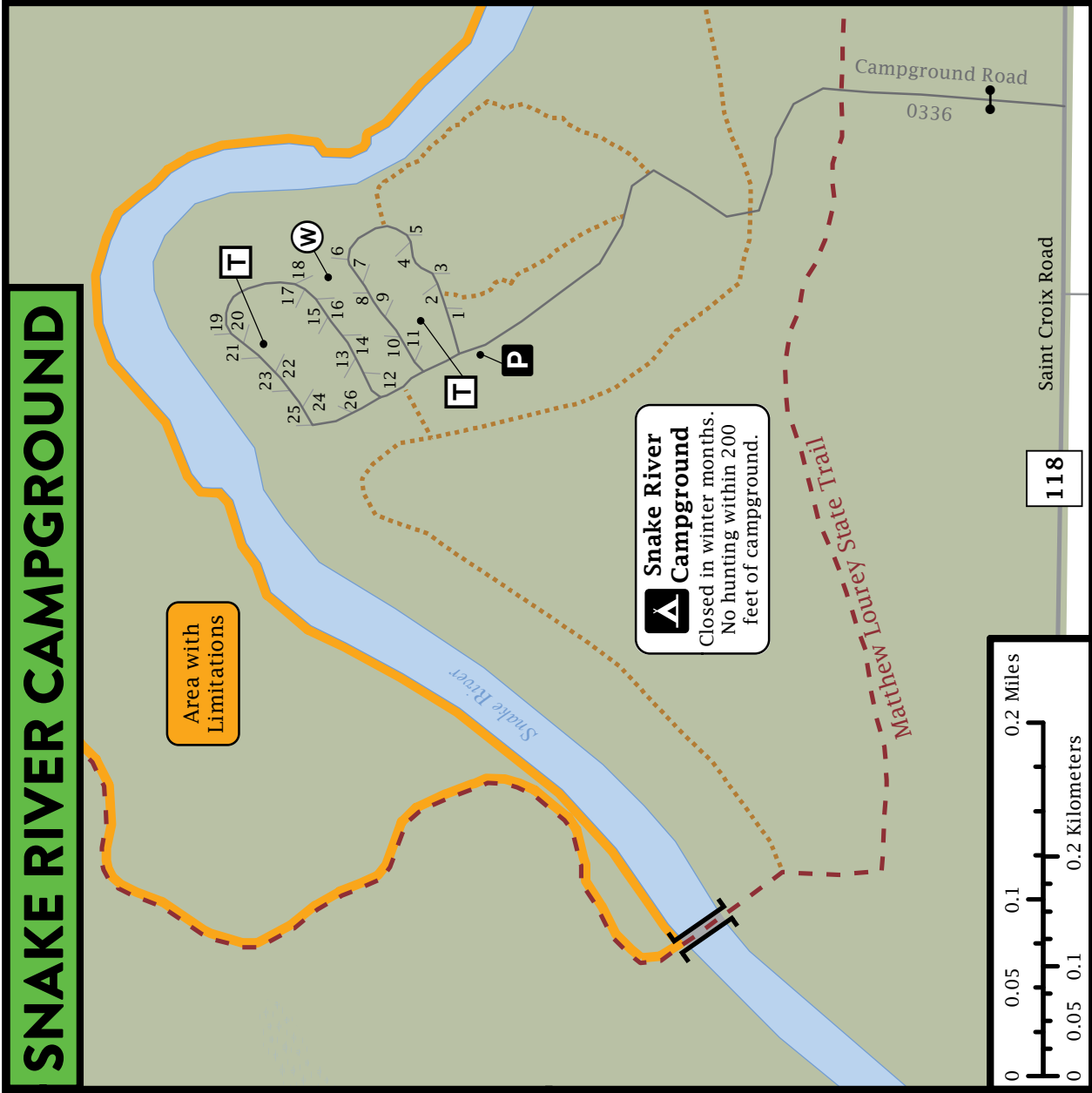
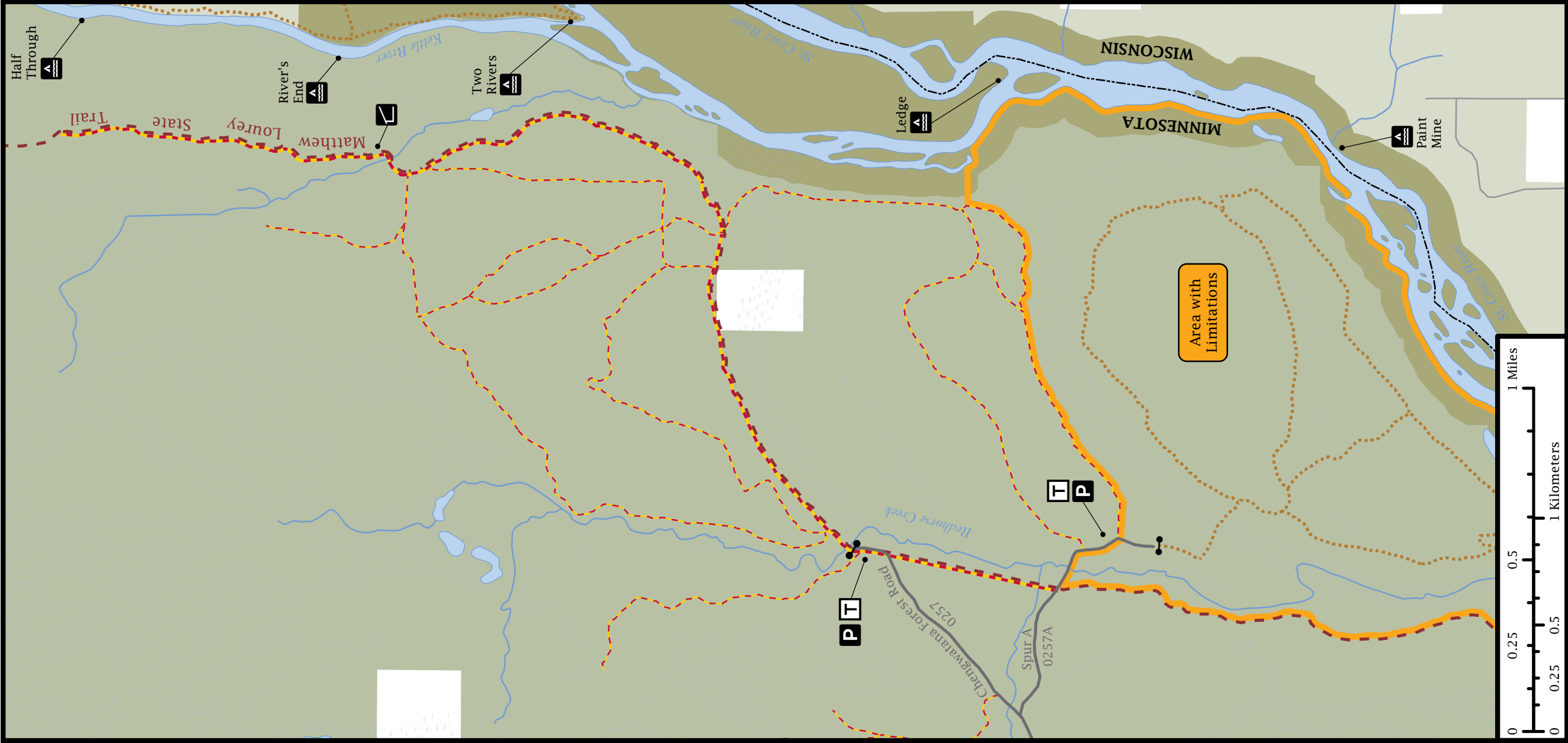
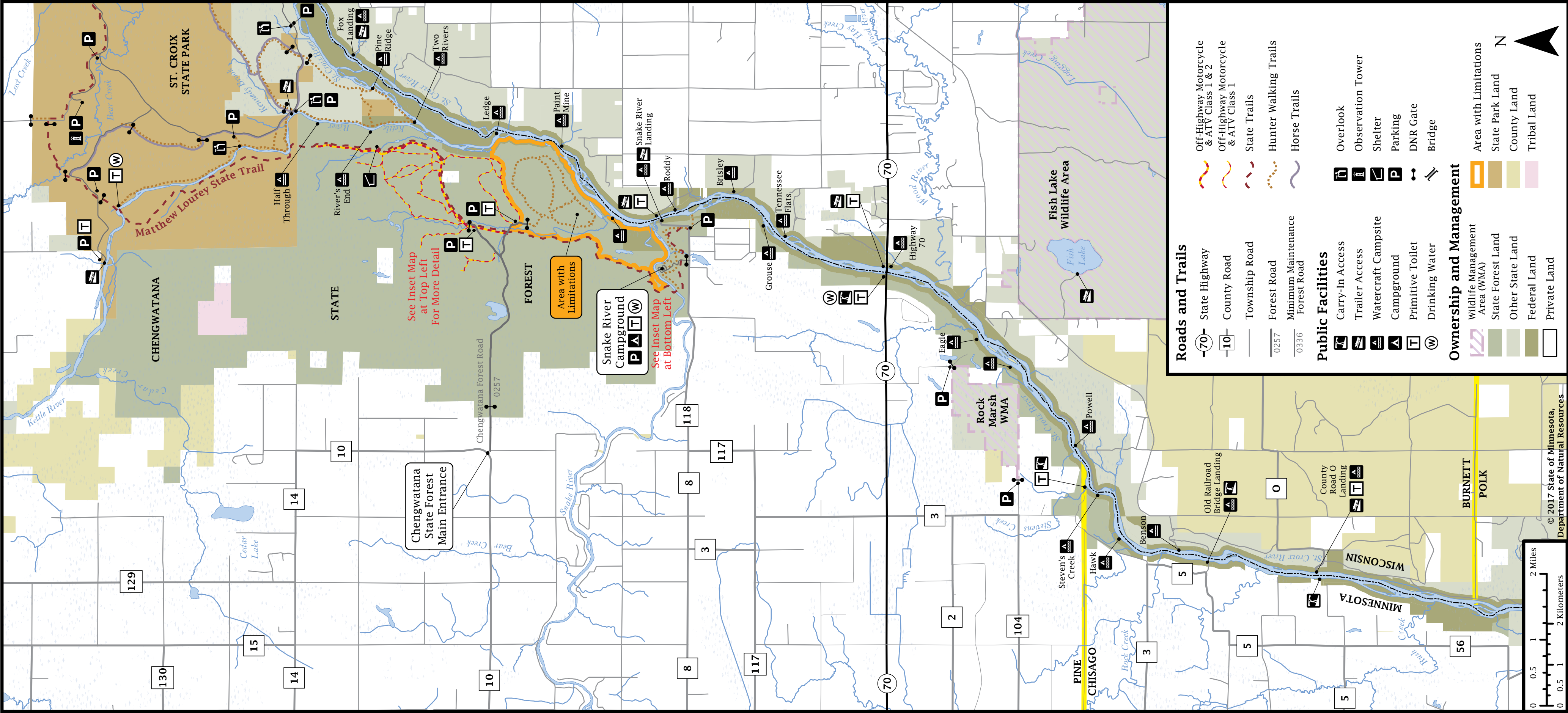
Springtime is a virtual paradise for lovers of migrating warblers and wildflowers. The St. Croix River valley is popular for picnicking and hiking along the river’s edge.



**PUT THIS MAP ON YOUR DEVICE**  
This map is geo-referenced. Download an app such as the free Avenza app on your device and use it to open the PDF of this map. The app will place a blue locator dot on the map wherever you take your device, even if you are out of cellular range.

The information in this map is dynamic and may change over time. The Minnesota DNR is not liable for improper or incorrect use of the data described and/or contained. The data and related graphics are not legal documents, and are protected by copyright.

**CHENGWATANA STATE FOREST**







## GENERAL STATE FOREST RULES

Whether you are camping, hunting, riding, geocaching, skiing, or gathering berries, take care to leave the forest in good condition.

- Forest lands are open at all times unless otherwise posted. Forest day-use areas are open between 6 a.m. and 10 p.m. Between 10 p.m. and 8 a.m., only registered campers may enter or remain in a campground.
- Campsites have limited amenities and are first-come, first-served. Dispersed camping is also allowed at least 1 mile outside of designated campgrounds on state forest land for no fee.
- Summer camping is limited to 14 days. Between the second Sunday in September and the first Saturday in May, camping is limited to 21 days.
- Pack out what you pack in. Remove all personal property. Do not burn litter or garbage.
- Don't leave equipment unattended for more than 24 hours.
- Erecting permanent buildings of any kind is prohibited.
- Use firewood approved by the DNR or dead fuelwood collected on-site. Kiln-dried, unstained, unpainted dimensional lumber free from metal or other foreign objects is also permitted. It is illegal to bring in any other firewood. These rules are to prevent accidentally introducing harmful pests such as emerald ash borers. [mndnr.gov/firewood](https://mndnr.gov/firewood)
- Keep campfires no larger than 3 feet wide and 3 feet high. Attend the fire at all times. Completely extinguish fires before leaving the area. It should be cold to the touch.
- Bury human waste (if vault toilets are not available) and animal parts at least 150 feet from a water body and away from areas where it could cause a nuisance or hazard to public health.
- Collecting berries, mushrooms, or dead fuelwood for personal use while in the forest is okay. However collecting large amounts of these items to take home for personal use or sale requires a permit. Get permits from your local DNR forestry office. [mndnr.gov/areas/forestry](https://mndnr.gov/areas/forestry)
- Hiking, horseback riding, and mountain biking are allowed on all trails except groomed ski trails.
- This is a partial list of rules. For more information, visit the website listed below.

[mndnr.gov/state\\_forests/rules.html](https://mndnr.gov/state_forests/rules.html)

# CHENGWATANA STATE FOREST



## CAMPING

No reservations required. Fees collected on site. First-come, first-served.

### SNAKE RIVER CAMPGROUND

Tucked among towering pines along the Snake River, this primitive campground offers 26 drive-in sites, including two handicap-accessible sites, two toilets, and one well for drinking water. Campsites have a fire ring, table, and garbage cans. ATV use is not allowed in the campground.

### NATIONAL PARK SERVICE CAMPSITES

Boaters on the St. Croix River can access primitive shoreline campsites at river miles 576, 582, 584.8, 585.5, 587.1, 591.4, 591.7, 592.4, 592.5, 593.3, and 593.5. Vault toilets are nearby—bring toilet paper. No drinking water. Operated by the National Park Service. [nps.gov/sacn](https://nps.gov/sacn)

## TRAILS

### MATTHEW LOUREY STATE TRAIL

Snowmobilers, hikers, horseback riders, and mountain bikers can enjoy miles of gravel and natural-surface trail that links with the St. Croix State Park with the St. Croix and Nemadji state forests. Portions of the trail are open to all-terrain vehicles and off-highway motorcycles.

[mndnr.gov/state\\_trails/matthew\\_lourey](https://mndnr.gov/state_trails/matthew_lourey)

### KETTLE RIVER STATE WATER TRAIL

The last stretches of the Kettle River before it empties into the St. Croix River contain several class I and II rapids. The Maple Island canoe landing in St. Croix State Park is a good place to enter the river.

### SNAKE RIVER STATE WATER TRAIL

A few miles of Snake River rapids run through the Chengwatana State Forest before emptying into the St. Croix River. The River's End campsite is located about one mile from its mouth at the St. Croix River.

### ST.CROIX RIVER STATE WATER TRAIL

There are boat landings on the west bank along the St. Croix River at river mile markers 580 (Rush City), 582 (Old Railroad Bridge), and 584 (Stevens Creek). The St. Croix is a nationally designated "Wild and Scenic River." [mndnr.gov/watertrails](https://mndnr.gov/watertrails)

### SNOWMOBILE TRAILS

Several miles of scenic, flat and hilly snowmobile trails pass through the Chengwatana State Forest. Trails in the northern portion connect to the Matthew Lourey State Trail and St. Croix State Park trails. Some trails are plowed during the winter for logging activities and others are groomed during the winter. Trails are marked with orange signs.

- Snowmobile trail maps are on [mndnr.gov/snowmobiling/interactive\\_map](https://mndnr.gov/snowmobiling/interactive_map)
- Snowmobiles must be registered. [mndnr.gov/regulations/snowmobile](https://mndnr.gov/regulations/snowmobile)

### OFF-HIGHWAY VEHICLE TRAILS

Several miles of all-terrain vehicle (ATV) trails in the Chengwatana State Forest wind through aspen and hardwoods. All trails are marked and range from easy to more difficult.

Highway-licensed vehicles may operate on signed forest roads.

Forest roads are open to off-highway vehicles (OHVs) unless posted closed.

### CHENGWATANA STATE FOREST TRAILS

This 15-mile trail system offers wide, gentle curves well-suited for new riders, and narrow, sharper curves to challenge more experienced trail goers. Pine Riders Club maintains the trails.

Visit [mndnr.gov/ohv](https://mndnr.gov/ohv) for up-to-date rules, maps, and trail and road closures.

### KNOW YOUR VEHICLE

Always make sure you are riding on the appropriate trail that is designated and signed for your vehicle. OHVs must be registered in Minnesota or have a trail pass.

[mndnr.gov/licenses/ohv](https://mndnr.gov/licenses/ohv)

### CLASSIFICATION: LIMITED

All trail networks on state lands are classified regarding motor vehicles. The Chengwatana State Forest is classified as "limited," which means OHVs are allowed **only** on signed and mapped routes that are open for a specific OHV use (e.g., ATVs, OHMs, or off-road vehicles).

## USING MOTOR VEHICLES WHEN HUNTING AND TRAPPING

The limited classification allows some exceptions for big game hunters and trappers during hunting and trapping seasons. For example, you can use Class 1 ATVs to hunt big game or transport temporary hunting stands between October and December, retrieve big game in September, trap during open season for protected furbearers, and trap for minnows under certain conditions.

See the *Minnesota Hunting and Trapping Regulations Handbook*:

[mndnr.gov/regulations/hunting](https://mndnr.gov/regulations/hunting)

## HUNTING

The Chengwatana State Forest provides plenty of game for hunting. In the appropriate season, licensed hunters can hunt for deer, grouse, wild turkeys and other game on state forest land and nearby wildlife management areas.

### FIREARMS AND BOWS

During open hunting season licensed hunters may carry an uncased and loaded firearm or strung bow to hunt, except in or within 200 feet of any forest recreation area (campgrounds, picnic areas, beaches, parking lots, interpretive sites, and trailheads).

Installing permanent deer stands and cutting shooting lanes are not allowed.

[mndnr.gov/regulations/hunting](https://mndnr.gov/regulations/hunting)

### FISHING AND TRAPPING

There are no special provisions or restrictions on fishing or trapping within state forests. You must have the proper license and abide by the same rules and seasons as anywhere else in Minnesota.

Visit [mndnr.gov/fishing](https://mndnr.gov/fishing) for up-to-date regulations.

## RESPECT PRIVATE PROPERTY

State forests contain private land within their boundaries, so know where you are. Hunting on private land within a state forest and crossing private land to access public land is subject to state trespass laws. Watch for posted "No Trespassing" and "No Hunting" signs and stay off private property.

You must have permission before entering private land, even to cross it to access public land.

Trespassing is a misdemeanor. If convicted, you could lose your license to hunt. All conservation and peace officers enforce trespass laws.

## WILDLIFE MANAGEMENT AREAS

Wildlife Management Areas (WMAs) provide habitat for deer, bear, small game, forest upland birds, and waterfowl. WMAs are established to protect lands and waters that have high potential for wildlife, public hunting, trapping, and fishing. Hunting and trapping are allowed in WMAs with the proper license and during the proper season.

### ROCK MARSH WMA

With fields, a marsh, and upland areas forested with hardwoods, this WMA provides opportunities to hunt deer, small game, grouse, wild turkey, and waterfowl.

WMA maps: [mndnr.gov/maps/compass.html](https://mndnr.gov/maps/compass.html)

WMA information: [mndnr.gov/wmas](https://mndnr.gov/wmas)

## NEARBY RECREATION

### ST. CROIX STATE PARK

Located just to the south of the St. Croix State Forest, the St. Croix State Park offers trails, canoeing, swimming, fishing, and cabin lodging. Additional park highlights include CCC-constructed buildings, a fire tower, and the Kettle River, which is a State Wild and Scenic River. Minnesota State Parks vehicle permit required.

[mndnr.gov/state\\_parks/st\\_croix](https://mndnr.gov/state_parks/st_croix)

## SCAN TO DOWNLOAD MAP



## ALWAYS STAY ON SIGNED TRAILS

Whether you're riding or walking, tread lightly on the land. Be courteous to others, respect private property, and obey the law.

## AREAS WITH LIMITATIONS

These areas are designated to protect unique natural resources and provide other non-motorized recreation opportunities. Motorized vehicles may not operate within "Areas of Limitations" for any reason.

## LEAVE TROUBLE BEHIND

Help prevent the spread of invasive plants and animals.

- Clean your gear before entering and leaving the recreation site.
- Remove mud and seeds from clothes, pets, boots, gear, and vehicles.
- Stay on designated trails.
- PlayCleanGo.org



CHENGWATANA  
STATE FOREST MAP  
DEPARTMENT OF  
NATURAL RESOURCES

## FOR MORE INFORMATION

Minnesota Department of Natural Resources  
[info.dnr@state.mn.us](mailto:info.dnr@state.mn.us)

651-296-6157  
888-646-6367  
TDD (Telecommunications Device for the Deaf)  
651-296-5484  
800-657-3929

## EMERGENCY SERVICE - DIAL 911

### PINE COUNTY SHERIFF

320-629-8380

### CHISAGO COUNTY SHERIFF

651-257-4100

## NEAREST HOSPITAL SERVICES

Lakeside Medical Center  
129 East 6th Ave.  
Pine City, MN 55063  
320-629-2542

The Minnesota DNR prohibits discrimination in its programs and services based on race, color, creed, religion, national origin, sex, public assistance status, age, sexual orientation or disability. Persons with disabilities may request reasonable modifications to access or participate in DNR programs and services by contacting the DNR ADA Title II Coordinator at [info.dnr@state.mn.us](mailto:info.dnr@state.mn.us) or 651-296-6157. Discrimination inquiries should be sent to Minnesota DNR, 500 Lafayette Road, St. Paul, MN 55155-4049, or Office of Civil Rights, U.S. Department of the Interior, 1849 C. Street NW, Washington, D.C. 20240.

© 2017, State of Minnesota, Department of Natural Resources



Printed on Minnesota made  
paper containing a minimum of  
10 percent post-consumer waste.

FSC logo

FORESTRY  
500 Lafayette Road, St. Paul, MN 55155  
888-646-6367  
[mndnr.gov](https://mndnr.gov)

