



PAUL BUNYAN STATE FOREST
105,116 ACRES • ESTABLISHED 1935

BADOURA STATE FOREST
15,535 ACRES • ESTABLISHED 1963

FOREST LANDSCAPE: These forests lie almost entirely on the "central ridge," a terminal moraine in east-central Hubbard County. Many tiny ponds and bogs dot this rough and hilly land.

TWO WORKING FORESTS: From year to year, you may see changes in these forests. The DNR manages the trees, water, and wildlife in state forests for everyone to keep them healthy and meet recreational, environmental, and economic goals. Trees are harvested to make a variety of products, such as lumber and building materials, pulp for making paper, pallets, fencing, and telephone poles. Through careful planning, harvesting, and planting, land managers create forest openings or plant trees and vegetation to improve habitat for white-tailed deer, ruffed grouse, and waterfowl. The DNR manages state forests to prevent wildfires, and keep our water and air clean.

HISTORY: Millions of board feet of white and red pine were harvested from this area in the early 1900s. The Red River Lumber Company had purchased most of the land and timber and in 1898 constructed a sawmill on the Eleventh Crow Wing Lake near what is today the city of Akeley. At first, the company maintained four to five logging camps. By 1908, eight to 10 camps existed in the area, with 4,000 to 5,000 men on the payroll. A logging railroad, started in 1902, extended to Lake Alice Township within a quarter-mile of Itasca State Park by 1915. Many of the present forest roads are old logging railroad beds, such as Spur I and the Gulch Lake forest trail. In 1915 the Red River Lumber Company moved its operations to California. Small operators with portable sawmills cut the rest of the merchantable timber and left the area by 1920. Hubbard County's "logging days" lasted only 20 years.

TREES: Severe, successive fires between 1913 and 1926 wiped out most of the sprouting young pines allowing aspen to become established. Before European settlement, white pine dominated the area, and DNR foresters have worked hard to increase white pine in the area. For example in the 1990s, mature aspen were harvested from 1,940 acres to allow sunlight to reach white pine seedlings growing in the understory. Seedlings on these, and hundreds of other acres, are becoming white pine forests once again.

WILDLIFE: The Paul Bunyan and Badoura state forests are home to white-tailed deer, bears, gray wolves, snowshoe hares, and ruffed grouse. Furbearers include fishers, otters, bobcats, coyotes, beavers, and red and gray foxes. Although not a major flyway, birdwatchers can spot a variety of warblers, red-shouldered hawks, and bald eagles. Migratory wildfowl can be found in the area's many ponds and bogs in the spring and fall.

The information in this map is dynamic and may change over time. The Minnesota DNR is not liable for improper or incorrect use of the data described and/or contained. The data and related graphics are not legal documents, and are protected by copyright.

PUT THIS MAP ON YOUR DEVICE

This map is geo-referenced. Download an app such as the free Avenza app on your device and use it to open the PDF of this map. The app will place a blue locator dot on the map wherever you take your device, even if you are out of cellular range.

KEY TO NUMBERED FEATURES ON THE MAP

- 1 BEMIDJI STATE GAME REFUGE
- 2 WOLF LAKE WILDLIFE MANAGEMENT AREA
- 3 LA SALLE LAKE SCIENTIFIC NATURAL AREA
- 4 ROCKWOOD WILDLIFE MANAGEMENT AREA
- 5 SCHOOLCRAFT STATE GAME REFUGE
- 6 BIRCH CREEK WILDLIFE MANAGEMENT AREA
- 7 ITASCA WILDERNESS SANCTUARY SCIENTIFIC NATURAL AREA
- 8 KABEKONA LAKE WILDLIFE MANAGEMENT AREA
- 9 LESTER LAKE SCIENTIFIC NATURAL AREA
- 10 CLOVER TOWNSHIP RUFFED GROUSE MANAGEMENT AREA
- 11 PAUL BUNYAN STATE GAME REFUGE
- 12 PAUL BUNYAN RUFFED GROUSE MANAGEMENT AREA
- 13 PARK RAPIDS STATE GAME REFUGE
- 14 BADOURA JACK PINE WOODLAND SCIENTIFIC NATURAL AREA
- 15 CROW WING LAKES WILDLIFE MANAGEMENT AREA

Roads and Trails

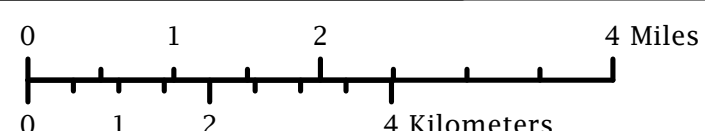
- 71 US Highway
- 34 State Highway
- 48 County Road
- Township Road
- Forest Road
- 0014 Minimum Maintenance Forest Road
- 1065 Off-Highway Motorcycle and ATV
- ATV Only
- Off-Highway Motorcycle Only
- State Trail
- North Country National Scenic Trail
- Hunter Walking Trail

Public Facilities

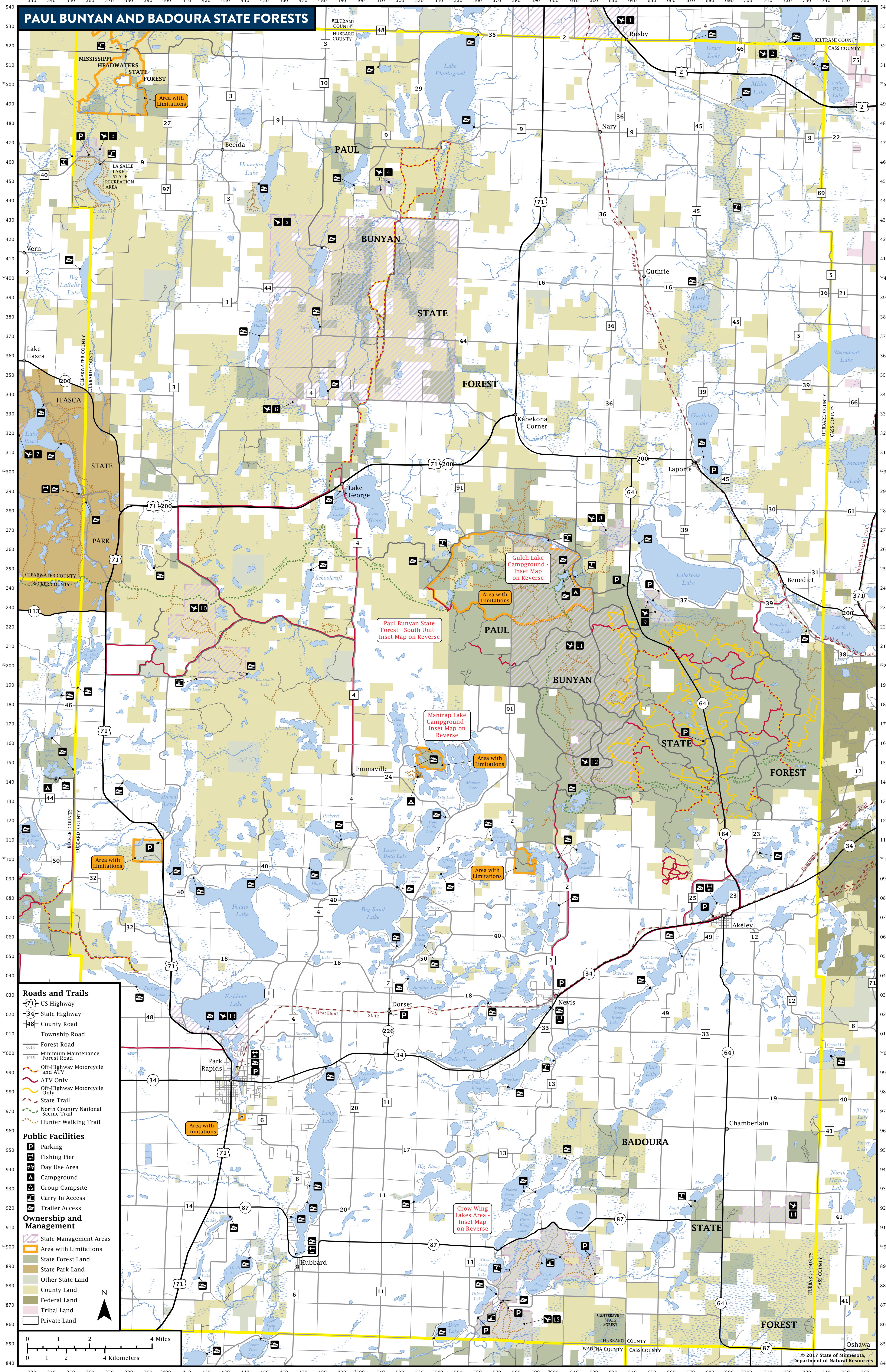
- P Parking
- F Fishing Pier
- D Day Use Area
- A Campground
- X Group Campsite
- W Carry-In Access
- T Trailer Access

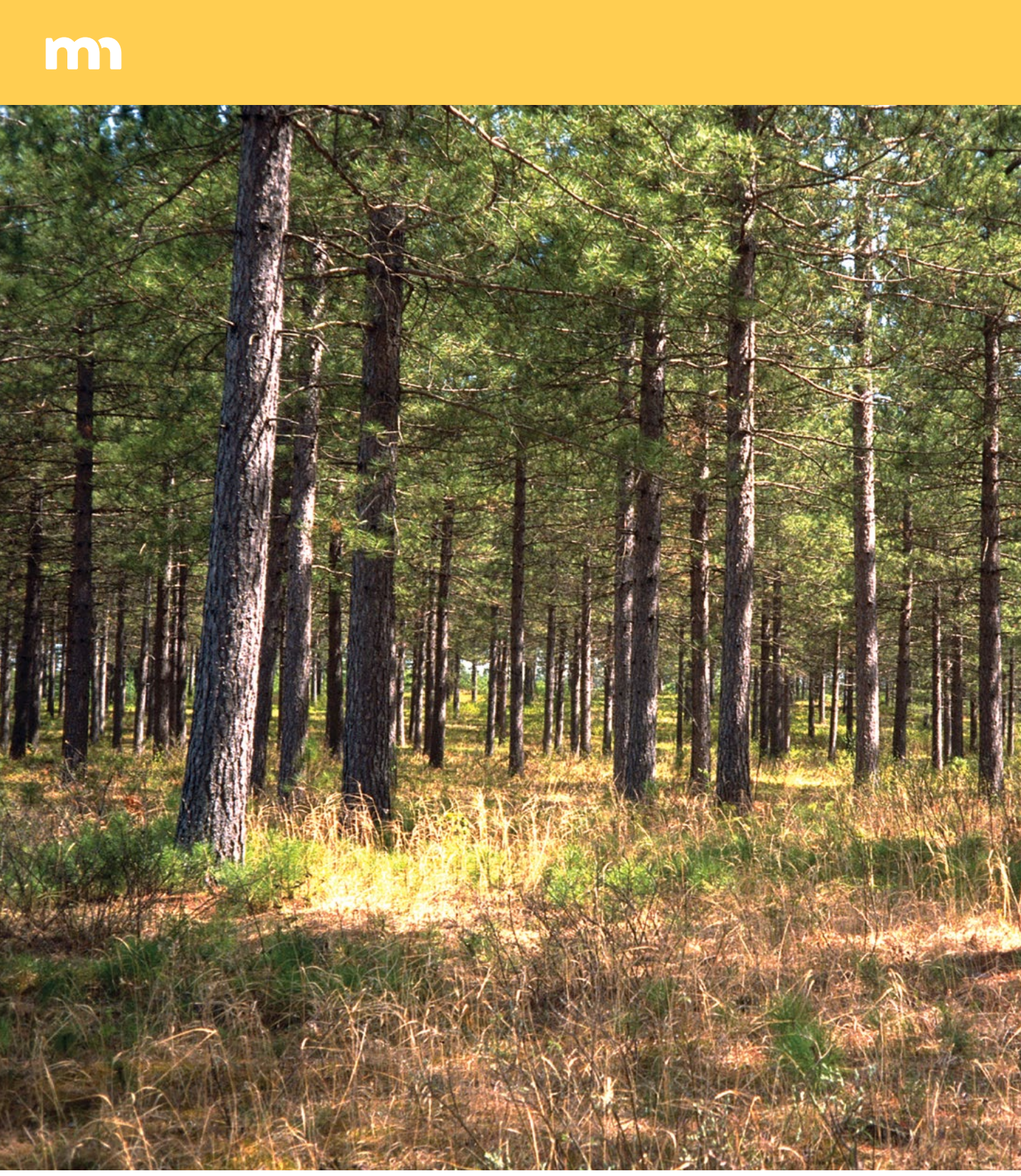
Ownership and Management

- State Management Areas
- Area with Limitations
- State Forest Land
- State Park Land
- Other State Land
- County Land
- Federal Land
- Tribal Land
- Private Land



**SCAN TO
DOWNLOAD MAP**





PAUL BUNYAN AND BADOURA STATE FORESTS



CAMPING

No reservations required. Fees collected on site. First-come, first-served.

GULCH LAKE CAMPGROUND AND LAKE 21 DAY-USE AREA

With nine campsites, one group site, and one well, this campground and day-use area is located within a game refuge and non-motorized recreation area near Nelson Lake, Lake 21, and Bass Lake. Provides hiking, water access, and picnic sites.

MANTRAP LAKE CAMPGROUND AND DAY-USE AREA

This area has 36 drive-in campsites, including two handicap-accessible campsites, picnic tables, drinking water, two toilets, and lake access for swimming and fishing. Mantrap Lake is a designated muskie lake with water access, a dock, picnic sites, and nature trails.

TRAILS

PAUL BUNYAN STATE TRAIL

With 115 miles of trail, this is the longest continuously paved rail-trail in the country, open to bicycle riders, hikers, inline skaters, and snowmobile riders. Built on an abandoned railroad grade, the flat trail winds past rivers and lakes, through forests and fields, and over bridges. It connects with the Heartland Trail south of the state forests near Akeley.

HEARTLAND STATE TRAIL

Bicycle riders, hikers, and inline skaters can enjoy 49 miles of flat, paved trail between Park Rapids and Cass Lake. The trail is located entirely on a level, abandoned railroad grade through rolling terrain, except for a 4-mile segment north of Walker, which is on a low-volume traffic road. A grass-covered trail extends 27 miles between Park Rapids and Walker, and is open to horseback riding, mountain biking, and hiking.

NORTH COUNTRY NATIONAL SCENIC TRAIL

This trail runs all the way across Hubbard County through Itasca State Park and into Becker County to the Hubble Pond Wildlife Management Area. Eventually, the trail will link to a larger corridor similar to the Appalachian Trail that will traverse more than 4,000 miles through seven northern states from North Dakota to New York. For interactive maps and to download GIS/GPS data, visit northcountrytrail.org/minnesota.

SOARING EAGLE SKI TRAILS

Winding through forests of balsam and spruce, cross-country skiers can enjoy 12 kilometers (7.5 miles) of groomed ski trails located 8 miles north of Park Rapids off U.S. Highway 71.

The Itascaur Bike, Ski, and Run Club maintains the state forest lands and Nordic center for public use.

Visit itascatur.org for maps.

Minnesota Ski Pass required.

mndnr.gov/licenses/skipass

SNOWMOBILE TRAILS

Several miles of scenic, hilly snowmobile trails loop their way through the Paul Bunyan State Forest. Located on forest roads, some trails are plowed during the winter for logging activities and others are groomed. All trails can be reached over grant-in-aid trails from Akeley, Nevis, and the Heartland Trail. Trails are marked with orange signs.

- Snowmobile trail maps: mndnr.gov/snowmobiling/interactive_map
- Snowmobiles must have current registration. See mndnr.gov/regulations/snowmobile/index.html

OFF-HIGHWAY VEHICLE TRAILS

With hundreds of miles of hilly all-terrain vehicle (ATV) trails among pine forests, the Paul Bunyan and Badoura state forests are a premier destination. All trails are marked and range from easy to more difficult.

Highway-licensed vehicles may operate on signed forest roads. Forest roads are open to off-highway vehicles (OHVs) unless posted closed.

Visit mndnr.gov/ohv for up-to-date rules, maps, and trail and road closures.

KNOW YOUR VEHICLE

Always make sure you are riding on the appropriate trail, designated and signed for your vehicle. OHVs must be registered in Minnesota or have a trail pass.

mndnr.gov/licenses/ohv

CLASSIFICATION: LIMITED

All trails on state lands are classified regarding motor vehicles. The Paul Bunyan, Badoura, and Mississippi Headwaters state forests are classified as "limited," which means OHVs are allowed **only** on signed and mapped routes that are open for a specific OHV use (e.g., ATVs, OHMs, or ORVs).

FOREST RIDERS ATV TRAIL

With 100 miles open to Class I and II ATVs, this trail system passes through multiple state forests with terrain ranging from hilly to smooth. Maintained by the Forest Riders ATV club. Most of this trail is located outside the Paul Bunyan State Forest.

MARTINEAU OHM TRAILS

Off-highway motorcycle (OHM) riders can use these 97 miles of single-track trails including a mix of smooth trails for beginners and tight, wooded technical trails for more experienced riders.

ROUND RIVER DRIVE ATV TRAILS

These trails contain 107 miles of twists, turns, and climbs open to Class I and II all-terrain vehicles (ATVs). Maintained by the Akeley Paul Bunyan ATV Trailriders and Timberland Dirt Devils clubs.

HUBBARD COUNTY ATV TRAIL SYSTEM

The county offers several miles of minimum maintenance forest roads that are open to Class I and II ATVs, OHMs, and off-road vehicles (ORVs).

Visit mndnr.gov/ohv for up-to-date rules, maps, and trail and road closures.

USING MOTOR VEHICLES WHEN HUNTING AND TRAPPING

The limited classification allows some exceptions for big game hunters and trappers during hunting and trapping seasons. For example, you can use Class 1 ATVs to hunt big game or transport temporary hunting stands between October and December, retrieve big game in September, trap during open season for protected furbearers, and trap for minnows under certain conditions.

See the *Minnesota Hunting and Trapping Regulations Handbook*:

mndnr.gov/regulations/hunting

HUNTING

The Paul Bunyan and Badoura state forests provide plenty of game for hunting. In the appropriate season, licensed hunters can hunt for deer, grouse, and other game on state forest land and nearby wildlife management areas. mndnr.gov/hunting

FIREARMS AND BOWS

During open hunting season licensed hunters may carry an uncased and loaded firearm or strung bow to hunt, except in or within 200 feet of any forest recreation area (campgrounds, picnic areas, beaches, parking lots, interpretive sites, and trailheads). Cutting shooting lanes and installing permanent deer stands are not allowed.

mndnr.gov/regulations/hunting

FISHING AND TRAPPING

There are no special provisions or restrictions on fishing or trapping within state forests. You must have the proper license and abide by the same rules and seasons as anywhere else in Minnesota.

Visit mndnr.gov/fishing for up-to-date regulations.

RESPECT PRIVATE PROPERTY

State forests contain private land within their boundaries, so know where you are. Hunting on private land within a state forest and crossing private land to access public land is subject to state trespass laws. Watch for posted "No Trespassing" and "No Hunting" signs and stay off private property.

You must have permission before entering private land, even to cross it to access public land.

Trespassing is a misdemeanor. If convicted, you could lose your license to hunt. All conservation and peace officers enforce trespass laws.

WILDLIFE

MANAGEMENT AREAS

Wildlife Management Areas (WMAs) and game refuges provide habitat for deer, bear, small game, forest upland birds, and waterfowl.

WMAs are established to protect lands and waters that have high potential for wildlife, public hunting, trapping, and fishing. Hunting and trapping are allowed with the proper license and during the proper season in all the WMAs in this area: Bemidji Slough, Wolf Lake—Hubbard County Unit, Rockwood, Birch Creek, Kabekona, and Crow Wing Chain. The Paul Bunyan Ruffed Grouse Management Area is also nearby.

WMA HIGHLIGHT: KABEKONA

With 380 acres, this WMA contains a complex of wetlands, upland forests, mixed forests, and agricultural landscapes. Aspen and jack pine forests provide habitat for ruffed grouse and deer. Wetlands have marsh, open water, and lowland brush. A great blue heron colony existed here from 1975 to 1993. Mallards and blue-winged teal are now the major nesters. You may see snipe, marsh wrens, muskrats, beavers, and grouse.

WMA HIGHLIGHT: CROW WING CHAIN

Located along the Crow Wing River and on the shores of the First and Second Crow Wing lakes, half of this 3,332-acre WMA is forested with aspen; oak; and jack, red, and white pines. There is an old-growth stand of deciduous trees southeast of the Second Crow Wing Lake. Seven parking areas along the perimeter and an extensive system of hunter walking trails and field roads provide good access. There are two water accesses on Palmer Lake and the Crow Wing River. Birders may view pileated woodpeckers, broad-winged hawks, and a variety of warblers.

WMA maps: mndnr.gov/maps/compass

WMA information: mndnr.gov/wmas

ALWAYS STAY ON SIGNED TRAILS

Whether you're riding or walking, tread lightly on the land. Be courteous to others, respect private property, and obey the law.

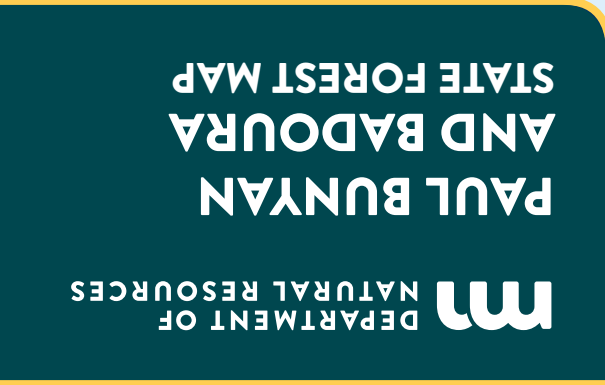
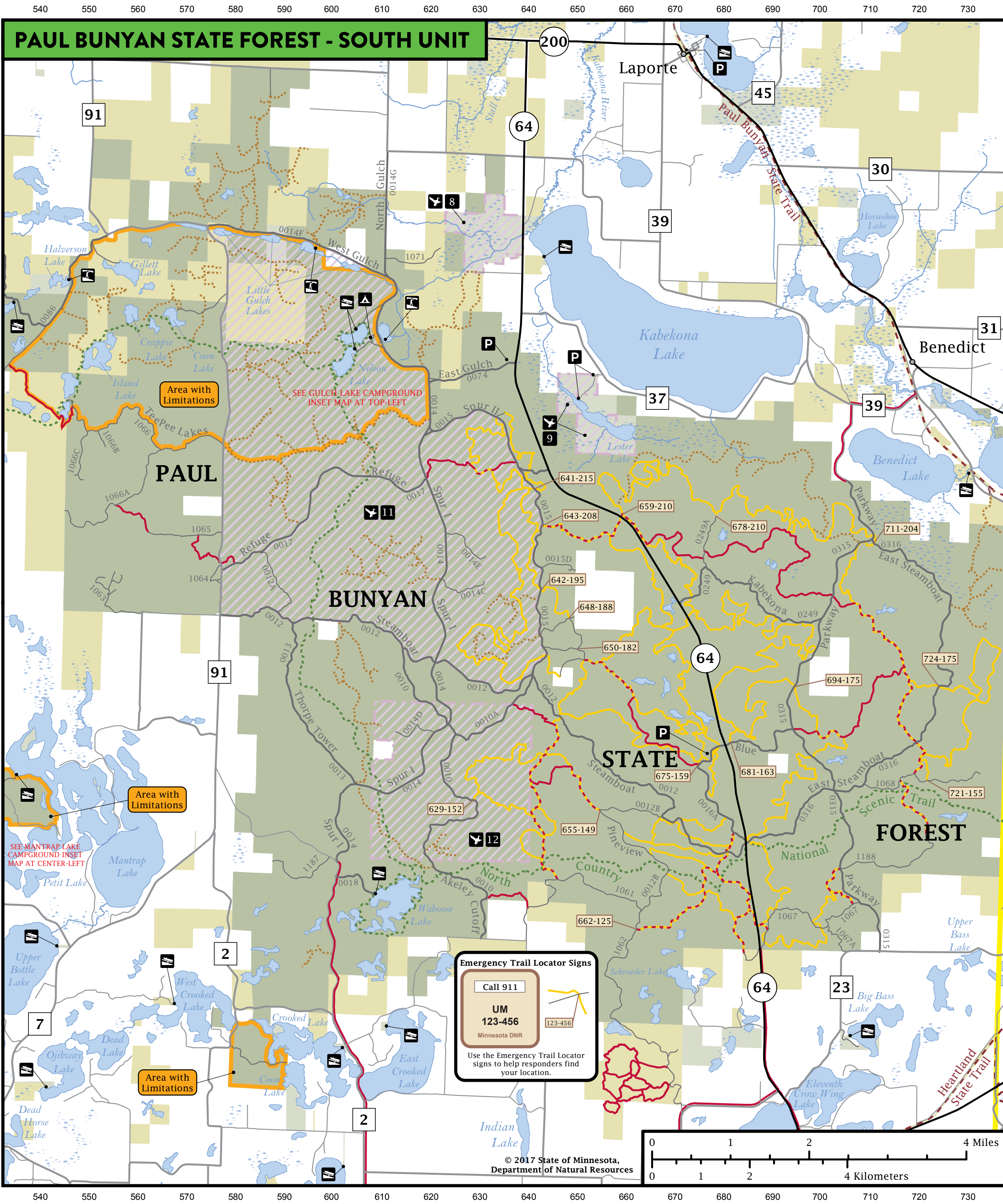
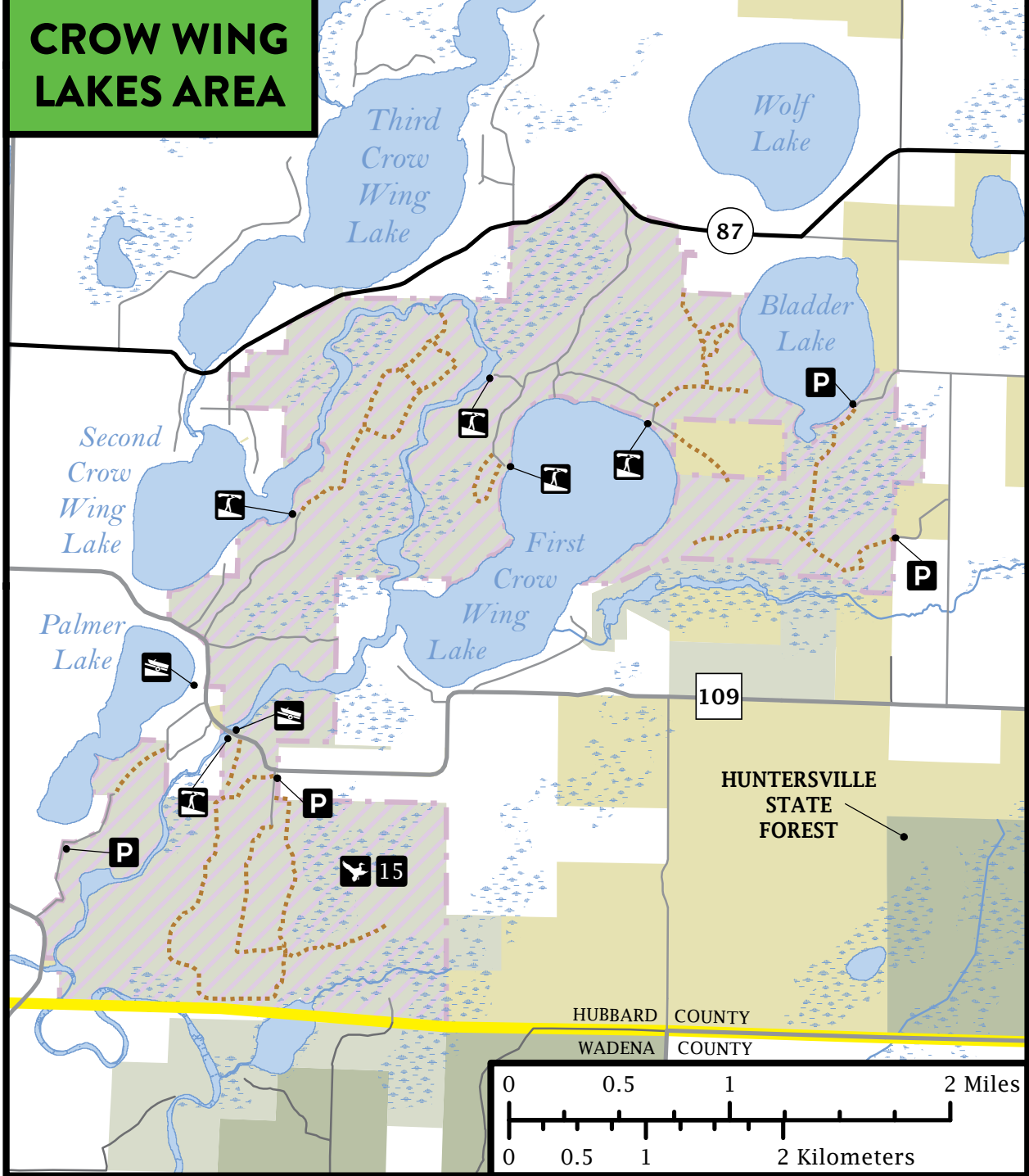
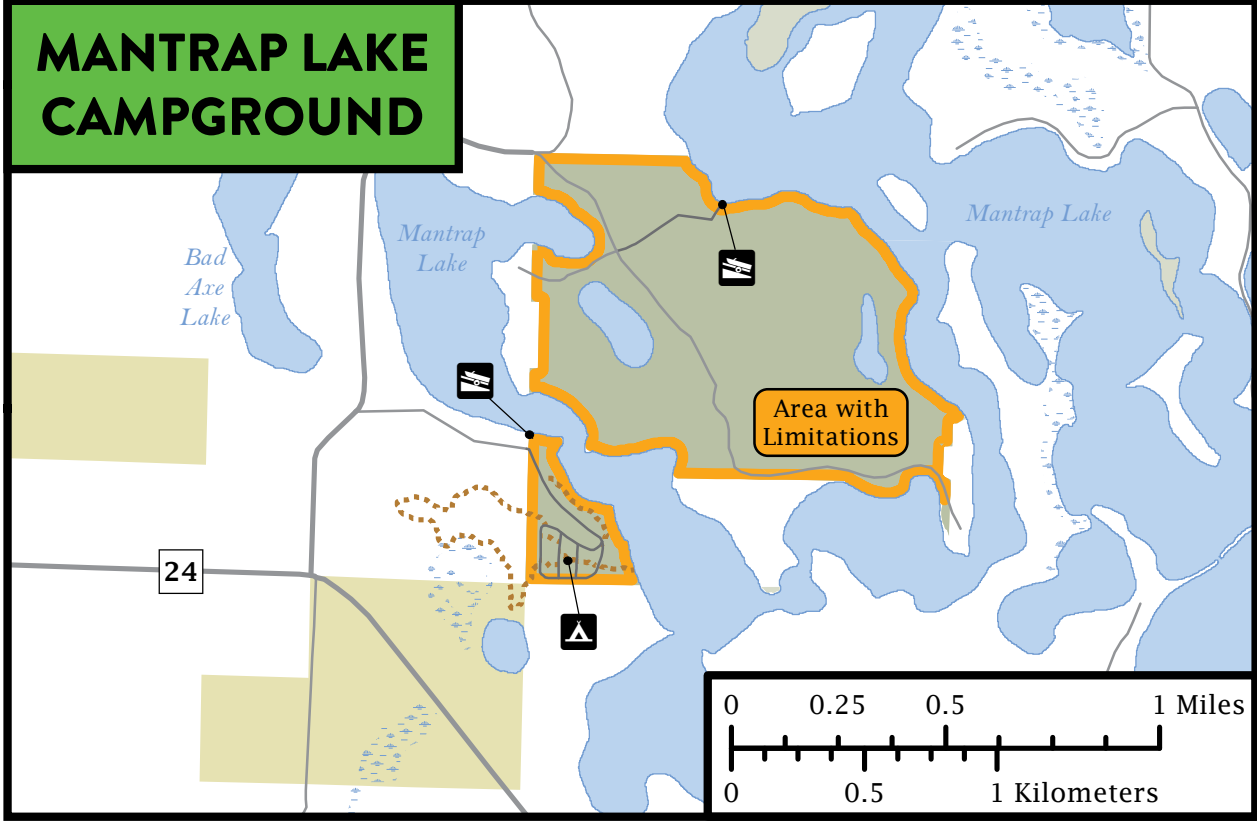
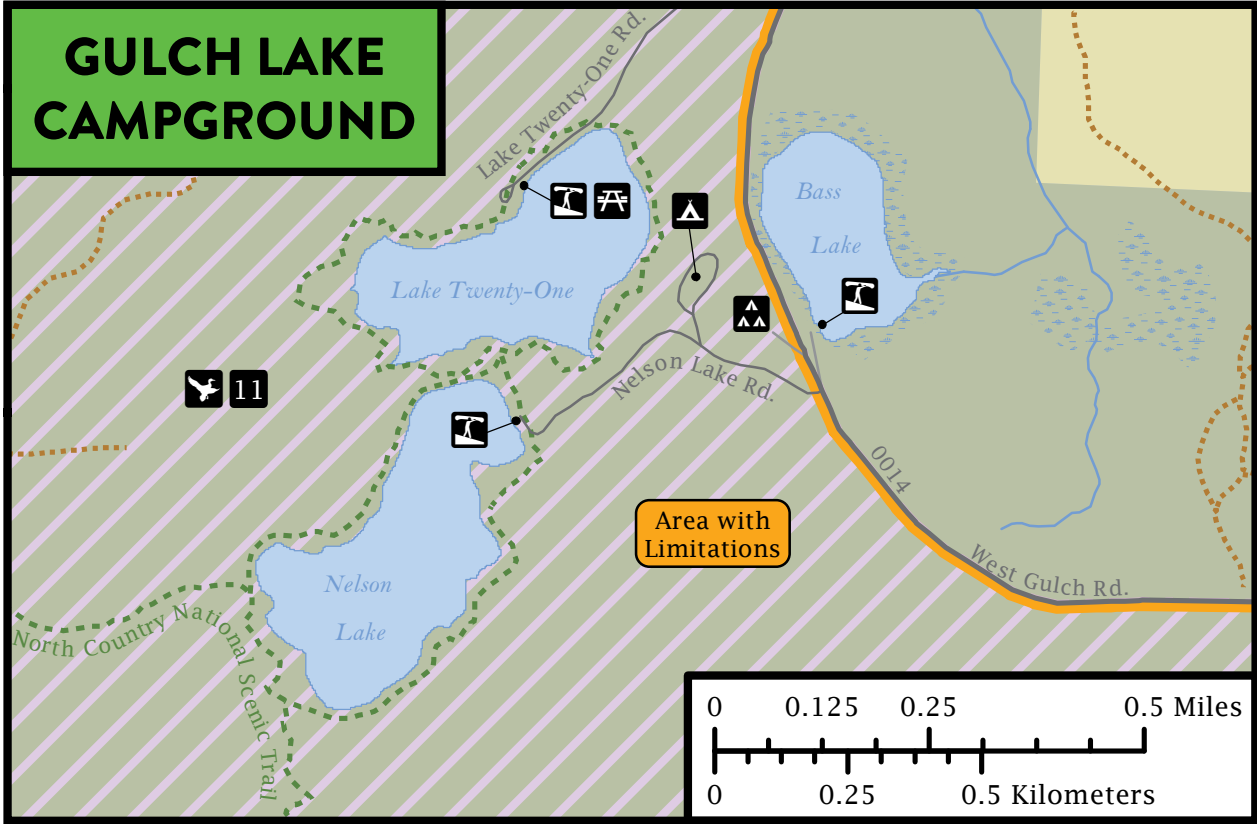
AREAS WITH LIMITATIONS

These areas are designated to protect unique natural resources and provide other non-motorized recreation opportunities. Motorized vehicles may not operate within "Areas of Limitations" for any reason.

LEAVE TROUBLE BEHIND

Help prevent the spread of invasive plants and animals.

- Clean your gear before entering and leaving the recreation site.
- Remove mud and seeds from clothes, pets, boots, gear, and vehicles.
- Stay on designated trails.
- PlayCleanGo.org



FOR MORE INFORMATION
Minnesota Department of Natural Resources
info.dnr@state.mn.us
651-296-6157
888-646-6367
TDD (Telecommunications Device for the Deaf)
651-296-5484
800-657-3929

EMERGENCY SERVICE - DIAL 911

HUBBARD COUNTY SHERIFF

218-732-3331

NEAREST HOSPITAL SERVICES

St. Joseph's Hospital
600 Pleasant
Park Rapids, MN 56470
218-732-3311

The Minnesota DNR prohibits discrimination in its programs and services based on race, color, creed, religion, national origin, sex, public assistance status, age, sexual orientation or disability. Persons with disabilities may request reasonable modifications to access or participate in DNR programs and services by contacting the DNR ADA Title II Coordinator at info.dnr@state.mn.us or 651-296-6157. Discrimination inquiries should be sent to Minnesota DNR, 500 Lafayette Road, St. Paul, MN 55155-4049, or Office of Civil Rights, U.S. Department of the Interior, 1849 C Street NW, Washington, D.C. 20240.

© 2017, State of Minnesota, Department of Natural Resources

Printed on Minnesota made paper containing a minimum of 10 percent post-consumer waste.



FORESTRY
500 Lafayette Road, St. Paul, MN 55155
888-646-6367
mndnr.gov

