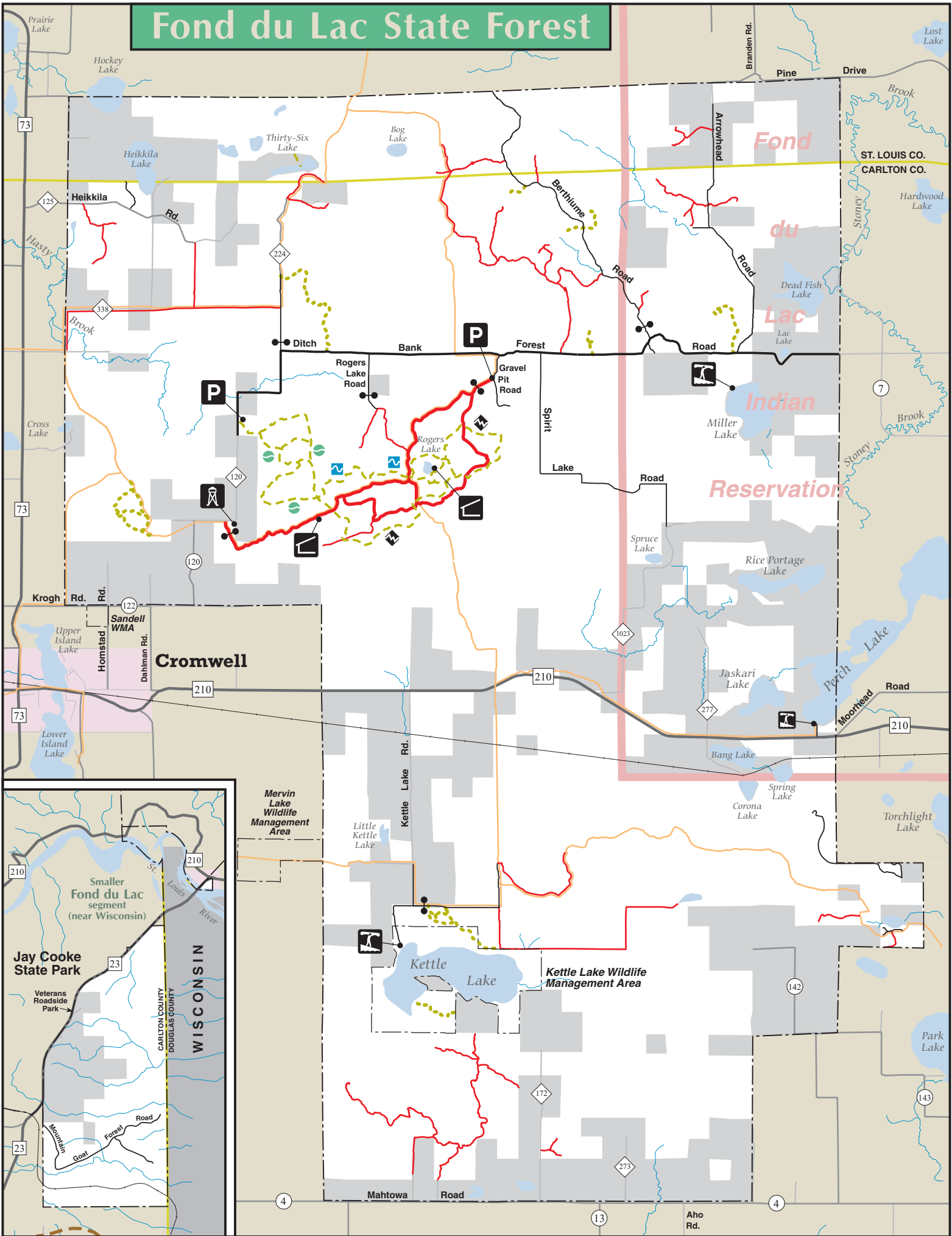
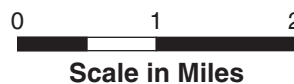


Fond du Lac State Forest



Legend

- | | | |
|--|---|--------------------------------|
| Parking | ATV/OHM
(open to OHMs, Class 1 and 2 ATVs) | Indian Reservation Boundaries |
| Gate | ATV/OHM
(open to OHMs and Class 1 ATVs only) | Public Land within the Forest |
| Fire Tower | Hunter Walking Trails | Private Land within the Forest |
| Shelter | Snowmobile | Cities |
| Carry-in Access | Ski Trails | Land outside of the Forest |
| State Forest Roads
(open to all motor vehicles unless posted closed) | easy | |
| Minimum Maintenance Forest Roads
(open to all motor vehicles unless posted closed - highway vehicles travel at your own risk) | more difficult | |
| | most difficult | |



Fond du Lac State Forest OHV Trails



General rules and restrictions

For more detailed information on rules and restrictions, please refer to the booklet **Off-Highway Vehicle Regulations**. To receive a free copy call the DNR Information Center at 1-888-MINNDNR or (651) 296-6157.

In general you may operate an off-highway vehicle:

- On your own land.
- On private land with the landowner's permission.
- On frozen waters where you have legal access (if not restricted by law or local ordinances).
- On land posted with signs specifically permitting the use of off-highway vehicles.

You may not operate an off-highway vehicle:

- On the median of a four-lane highway.
- Within the right-of-way of any interstate highway.
- At airports.
- In any state park, state recreation area, state historic site, Wildlife Management Area or state Scientific and Natural Area with the exception of posted trails and areas.
- On any frozen waters where you don't have legal access.
- In any areas restricted by local ordinances or municipalities.
- In a tree nursery or planting area.

What are you riding?

Not all off-highway motor vehicles can be ridden on all trails. The following descriptions can help you be certain that what you're riding is permitted on the trail you chose.

ATVs - All-Terrain Vehicles are motorized, flotation-tired vehicles with at least three, but no more than six low pressure tires, with an engine displacement of less than 800 cubic centimeters.

Class 1 ATVs have a total dry weight of less than 900 pounds.

Class 2 ATVs have a total dry weight of between 900 and 1,500 pounds.

OHMs - Off-Highway Motorcycles are vehicles designed to be straddled by the operator and have handlebars for steering control. Motorcycles may be legal for highway use and still considered to be OHMs if used for off-highway operation on trails or natural terrain.

ORVs - Off-Road Vehicles are motorized, recreational vehicles capable of cross-country travel on natural terrain, such as four-wheel-drive trucks or ATVs over 1,500 pounds.

For More Information

Find The Trails.com



Before you go...

A little planning will go a long way to ensure a safe and enjoyable riding experience. Remember to wear appropriate protective gear, review the current *Off-Highway Vehicle Regulations*, and keep your vehicle in good operating condition. Inexperienced riders should take a certified training course and understand the safety features of their vehicles before going out on trails.

The Fond du Lac State Forest Trails

The terrain in the forest is flat to rolling. Low areas consist of lowland conifers, alder-willow brushlands, and peat bogs. Kettle Lake and numerous smaller lakes are contained within the forest. There are no campgrounds within the forest. Dispersed camping is allowed as long as state forest rules are followed, except in the WMA where camping is prohibited. The forest is classified as "limited" to off-highway vehicles (OHVs), including all-terrain vehicles and off-highway motorcycles (see OHV information at right). This means that all trails available for these motorized activities will be posted. Any trail not posted is off limits to OHV use. The soils in the forest are easily rutted and compacted when wet, so OHV use will be carefully controlled. This forest is not a good destination location for recreational OHV riding. OHV use is not allowed in the WMA.

Snowmobile and ski trails can also be found in the forest. The trailhead for the snowmobile trail is on the south side of County Road 120 (at the Cromwell Fire Tower), just three miles north of Highway 210. The trailhead for the ski trail is another 1.25 miles further north on the east side of the road.

Nearby Facilities: in Cromwell.

Directions / Parking: From Cromwell, Highway 73 north 1 mile; then right on Co. Rd. 122 for 2 miles to Co. Rd. 120, turn left about 3 miles.

Safety First!

- Read the owner's manual and know your vehicle.
- Check your vehicle before you ride.
- Wear appropriate protective equipment and clothing.
- Don't lend your vehicle to unskilled riders.
- Supervise young or inexperienced riders.
- Never carry a passenger on vehicles intended for one person.
- Ride straight--no alcohol or drugs.
- Let trail conditions determine safe speeds.
- Stay to the right on trails.
- Stay away from open water, thin ice and wetlands
- Know the weather forecast.
- Use your headlight and make sure your taillight is working.
- Maintain safe distances when riding with others.
- Reduce your speed when riding at night.
- Yield to other motor vehicles and trail users.
- Young or beginning riders should take an all-terrain vehicle or off-highway motorcycle safety training course offered by the DNR.

Nemadji State Forest OHV Trails are classified as

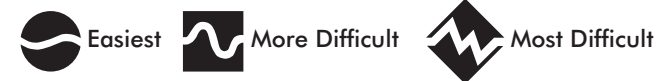


Easiest

What's New?

In 2003, the use of off-highway vehicles (OHVs) was banned in certain types of wetlands. The 2004 Legislature removed portions of that broad ban, and added new restrictions on where OHVs can travel. The new law does not differentiate between public and private wetlands in restricting OHV operation. It attempts to rely less on a recreational rider's knowledge of various wetland types and to make the rider generally more cautious of traveling on any wetland that is not part of an approved trail system. In addition, it allows exemptions for non-recreation use of OHVs in public waters and wetlands for various work-related activities.

Trail difficulty ratings



Easiest

More Difficult

Most Difficult



Yellow directional arrows are placed along the trail.



© 2008, State of Minnesota, Department of Natural Resources • This publication is available in alternative format • Printed on recycled paper.

Check the DNR's website for the latest information about regulations and safety training courses. Contact local trail office prior to your visit to be aware of current trail conditions.

Visitor Information

Department of Natural Resources Information Center
(651) 296-6157 (metro area & outside MN)
1-888-MINNDNR / 1-888-646-6367 (MN toll free)

TDD (Telecommunications Device for Deaf)
(651) 296-5484 (metro area)
1-800-657-3929 (MN toll free)

www.dnr.state.mn.us or www.findthetrails.com

Trail Area Information

MN DNR Trails and Waterways
Moose Lake Area Office
(218) 485-5410

If you have a medical emergency please DIAL 911