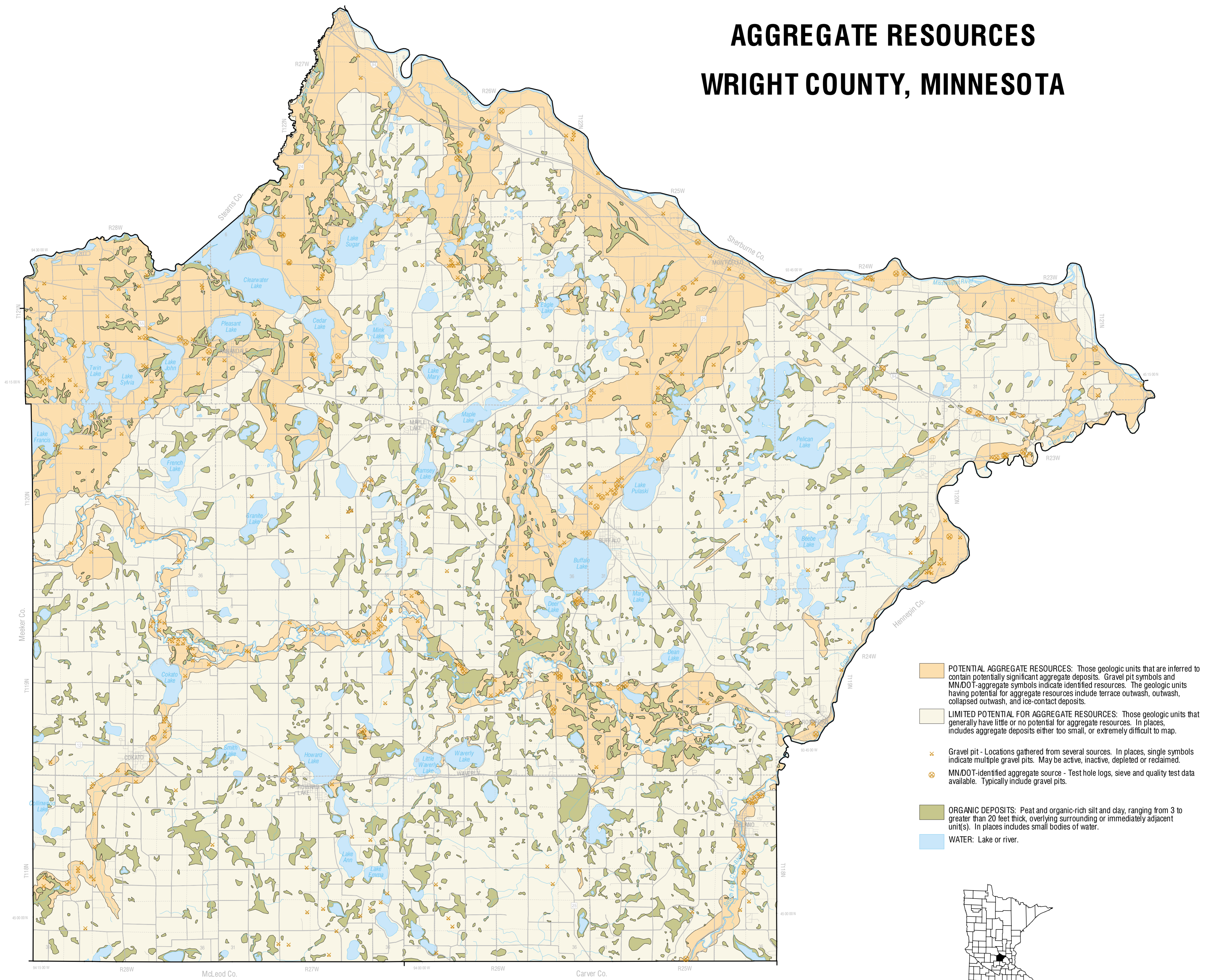
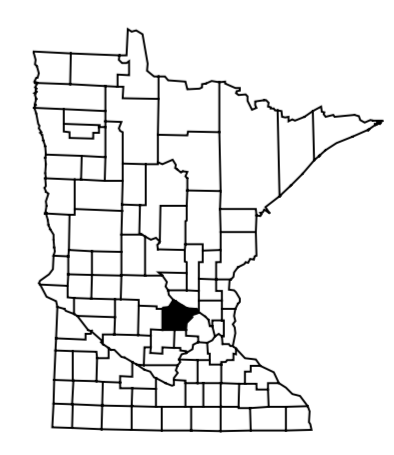


AGGREGATE RESOURCES

WRIGHT COUNTY, MINNESOTA



- POTENTIAL AGGREGATE RESOURCES:** Those geologic units that are inferred to contain potentially significant aggregate deposits. Gravel pit symbols and MN/DOT-aggregate symbols indicate identified resources. The geologic units having potential for aggregate resources include terrace outwash, outwash, collapsed outwash, and ice-contact deposits.
- LIMITED POTENTIAL FOR AGGREGATE RESOURCES:** Those geologic units that generally have little or no potential for aggregate resources. In places, includes aggregate deposits either too small, or extremely difficult to map.
- x
 Gravel pit - Locations gathered from several sources. In places, single symbols indicate multiple gravel pits. May be active, inactive, depleted or reclaimed.
- x
 MN/DOT-identified aggregate source - Test hole logs, sieve and quality test data available. Typically include gravel pits.
- ORGANIC DEPOSITS:** Peat and organic-rich silt and clay, ranging from 3 to greater than 20 feet thick, overlying surrounding or immediately adjacent unit(s). In places includes small bodies of water.
- WATER:** Lake or river.



Aggregate resources: Modified from digital data associated with Lehr, J.D., 1991, Aggregate Resources and Quaternary Geology, Wright County, Minnesota, Report 294, Minnesota Department of Natural Resources, Division of Minerals.

Geology: Aerial photo interpretation and field mapping by J.D. Lehr, 1988-1989

Base map: Roads and hydrography from U.S. Geological Survey, 1:100,000 Digital Line Graphs (DLGs)
Public Land Survey lines from Land Management Information Center, annotation from MN Department of Natural Resources

SCALE 1:100,000

