
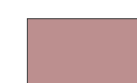


# Classification of Aggregate Resources Sherburne County, Minnesota 1987 \*

## Aggregate Resource Land Classifications

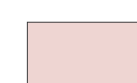
### IDENTIFIED RESOURCES

Aggregate resources whose location, grade and quality are known from specific geologic evidence. To reflect varying degrees of quality of aggregate deposits, the following classes are recognized.

-  Areas containing significant aggregate deposits consisting mainly of gravel.
-  Areas containing significant aggregate deposits consisting mainly of sand and gravel, such as those within the otherwise broad sandy outwash along the Mississippi River.


### POTENTIAL RESOURCES

Potential significant aggregate resources whose location, grade and quality are indicated by general geologic evidence, but which require further evaluation.



-  This class includes the large Mississippi River outwash that consists primarily of sandy materials, yet it contains gravel deposits in certain locations; old channel scars shown within this outwash may be favorable places for such deposits.

### SUBECONOMIC RESOURCES



Those containing no significant aggregate deposits due to poor grade or small size.

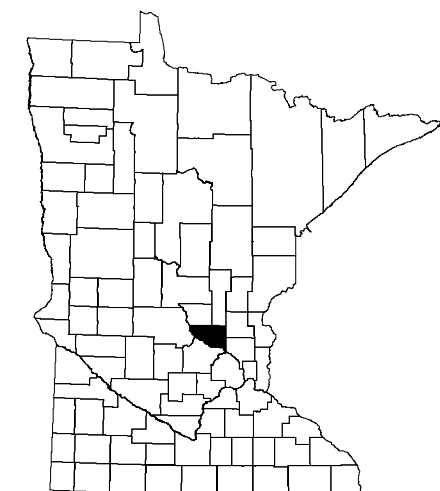
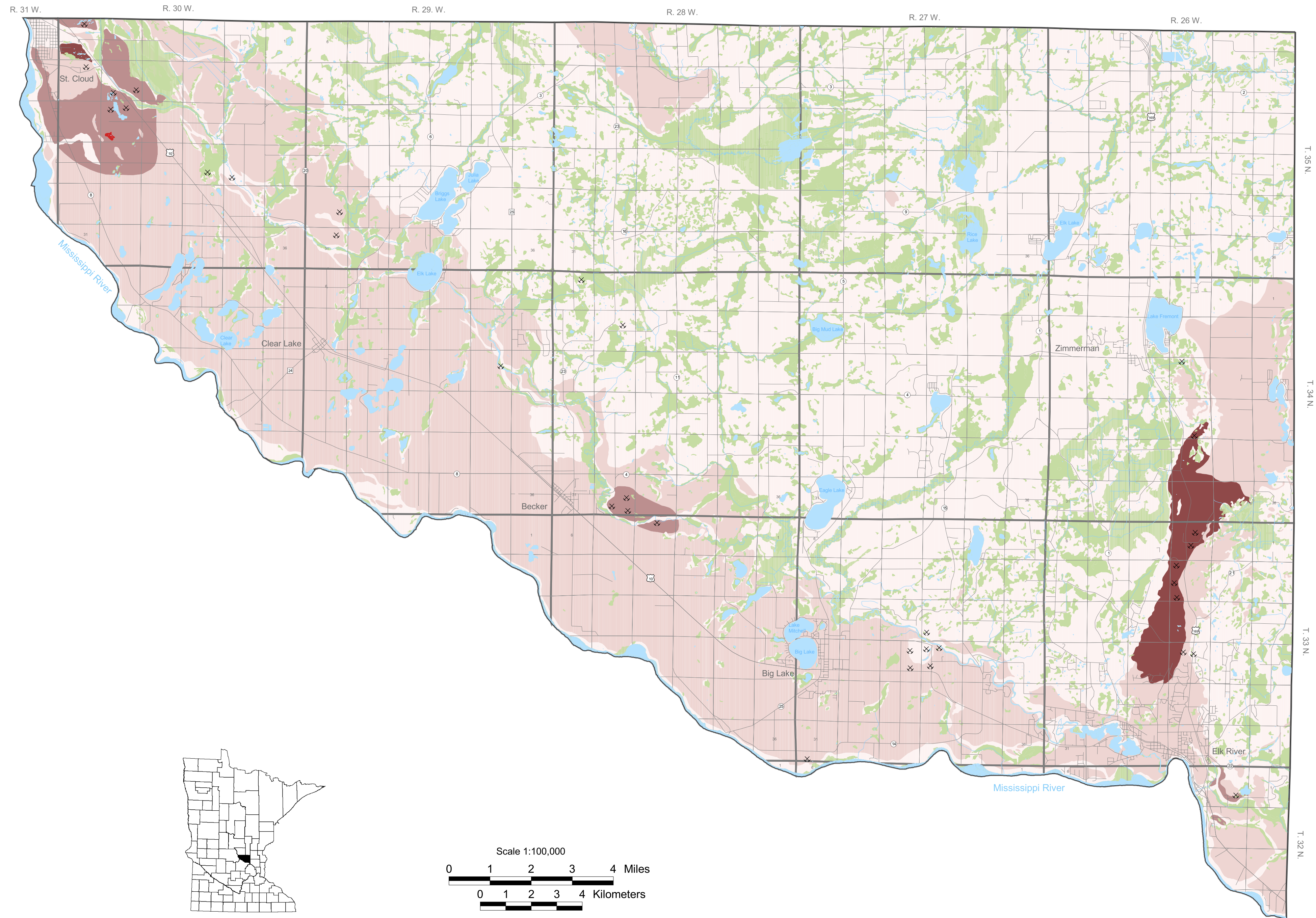
-  These areas are represented by terrains of the Anoka Sandplain, terminal and ground moraines of the Des Moines Grantsburg Sublobe, lake basins, peatlands, and alluvium along major water courses. Scattered buried deposits of unknown potential may exist at depth, but are considered undevelopable and uneconomic due to availability of other sources.

### OTHER FEATURES WITH RESOURCE POTENTIAL

-  Bedrock Outcrops - Crushed Stone Potential
-  Gravel Pits

### OTHER FEATURES

-  Lakes, Rivers, Streams
-  Wetlands



Base map data sources:  
Lakes, wetlands, and rivers from National Wetland Inventory, U.S. Fish and Wildlife Service.  
Public Land Survey- PLS Project, 1999, Minnesota Department of Natural Resources, Division of Lands and Minerals.  
Roads from State of Minnesota BaseMap, 1996, Department of Transportation Surveying and Mapping BaseMap Development Group.  
Minor Civil Divisions- township boundaries from the 1990 TIGER line files.

\* This map is based on Aggregate Resource Mapping by M.T. Eng and M.P. Katsoulis, July 1987, Department of Natural Resources, Division of Minerals, in cooperation with Minnesota Geological Survey, Department of Transportation, and the State Planning Agency. In 2001, the map was scanned, rectified, digitized and captured into digital format by Sue Langer. Cartography was done by Erika Rowe.