



ARTHUR IRON MINING COMPANY
 SURFACE MAP
 OF THE
 CENTRAL DISTRICT
 MINES AND VICINITY
 SCALE OF FEET
 0 200 400 600 800 1000
 LAKE SUPERIOR DATUM
 MINING ENGINEERING DEPT. HAROLD MINE OFFICE
 CENTRAL DISTRICT JAN. 1, 1916 HIBBING MINN.

ARTHUR IRON MINING COMPANY

SJICE MAP
FOURTH SUB-LEVEL
UTICA MINE

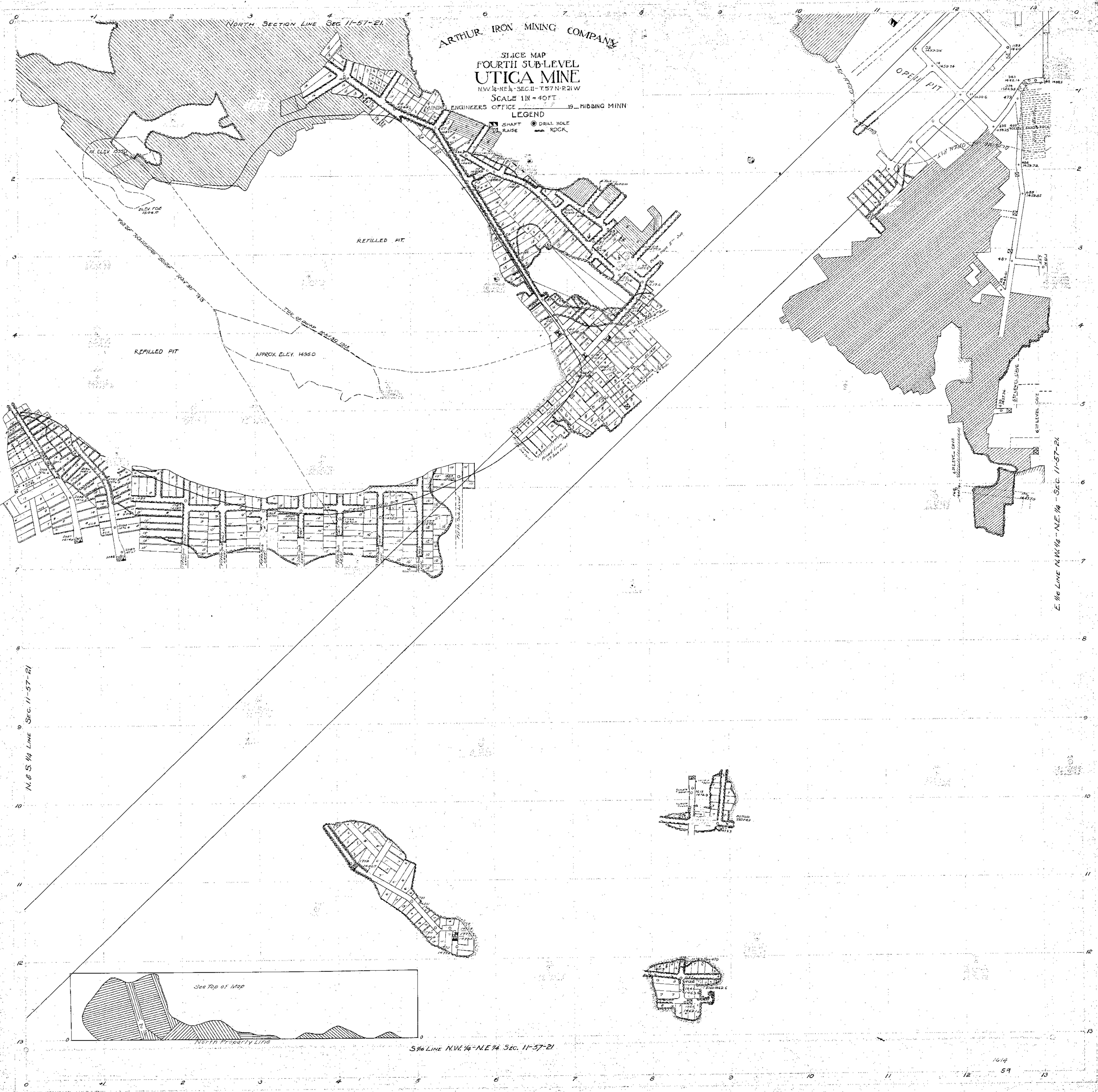
NW 1/4 - NE 1/4 - SEC. 11 - T. 57 N. R. 21 W.

SCALE 1 IN = 40 FT

MINING ENGINEERS OFFICE 1919 HIBBING MINN

LEGEND

SHAFT DRILL HOLE
RAISE ROCK



REFILLED PIT

REFILLED PIT

APPROX. ELEV. 1495.0

OPEN PIT

OPEN PIT

OPEN PIT

OPEN PIT

OPEN PIT

OPEN PIT

OPEN PIT

OPEN PIT

OPEN PIT

OPEN PIT

OPEN PIT

OPEN PIT

OPEN PIT

OPEN PIT

OPEN PIT

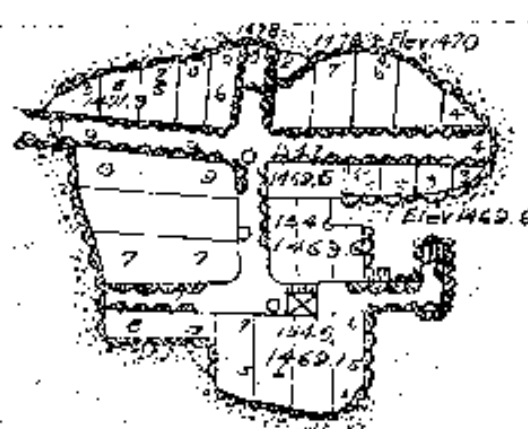
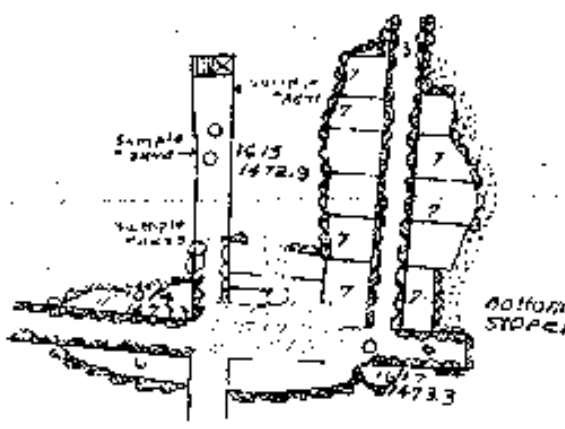
E. 1/2 LINE NW 1/4 - NE 1/4 - SEC. 11-57-21

N. 1/2 S. 1/4 LINE SEC. 11-57-21

See Top of Map

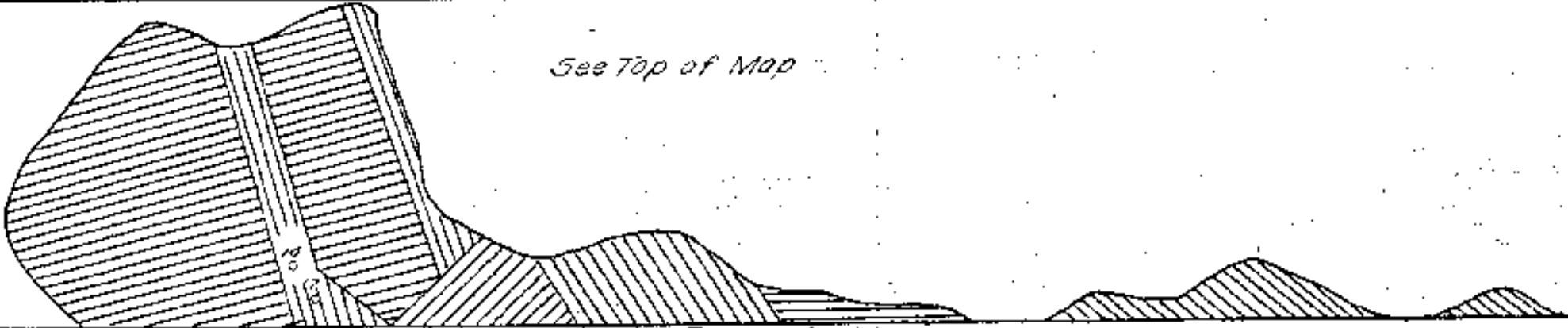
NORTH PROPERTY LINE

S 1/2 LINE NW 1/4 - NE 1/4 SEC. 11-57-21



See Top of Map

North Property Line



NORTH SECTION LINE, SEC. 11-57-21.

GREAT NORTHERN IRON ORE PROPERTIES SLICE MAP FIFTH SUB-LEVEL UTICA MINE

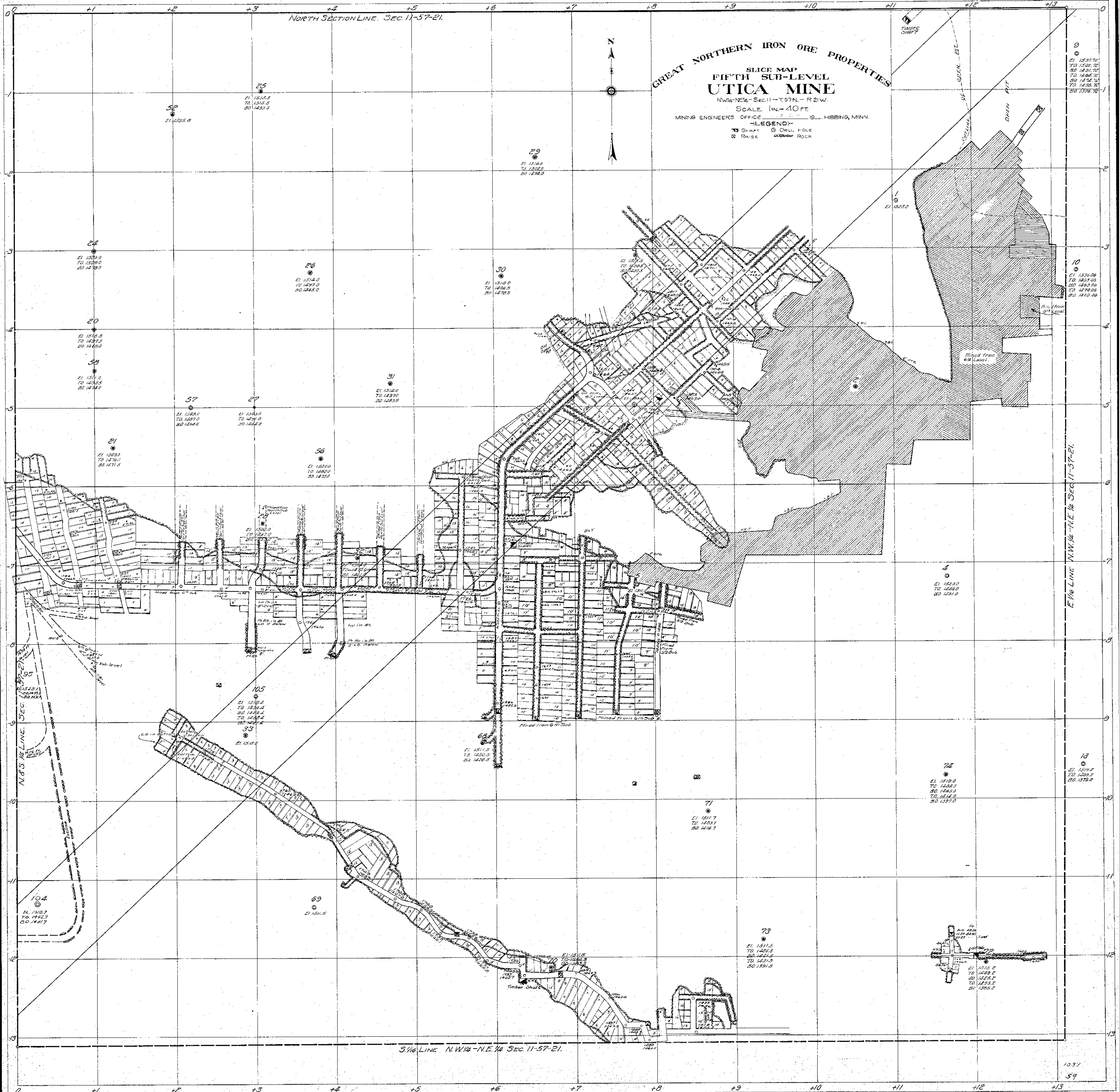
N.W. 1/4 - NE 1/4 - Sec. 11 - T. 97 N. - R. 21 W.

SCALE 1 IN. = 40 FT.

MINING ENGINEERS OFFICE 1918 HIBBING, MINN.

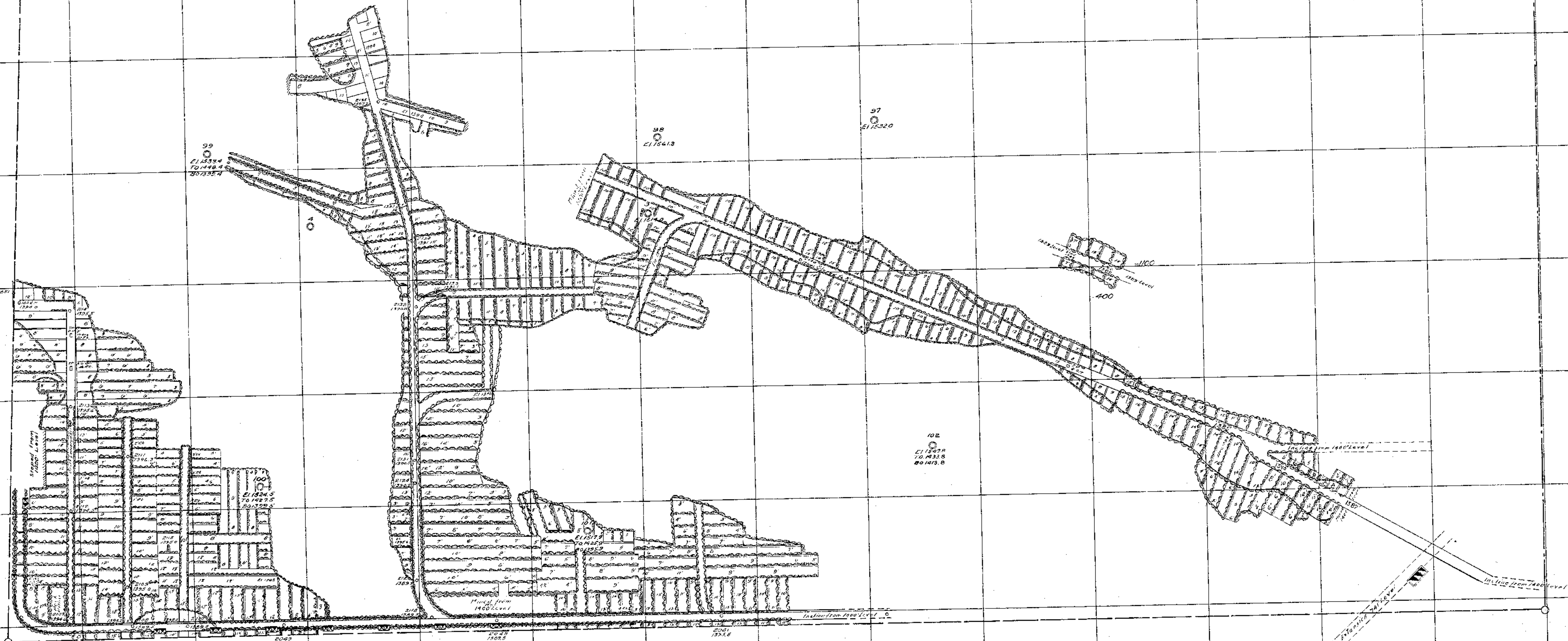
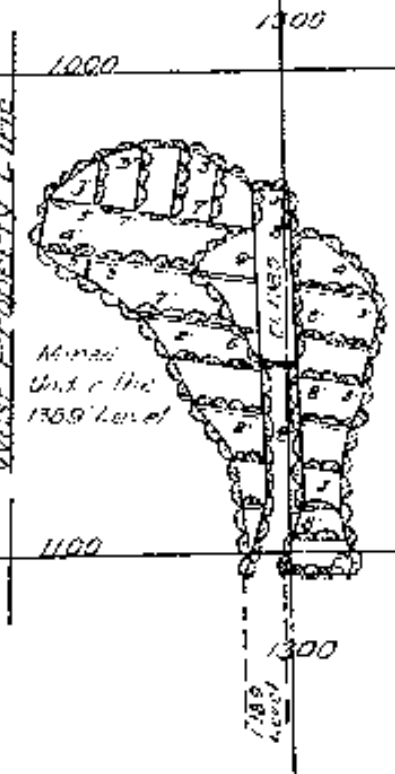
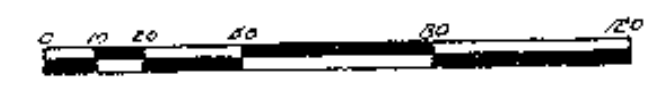
LEGEND

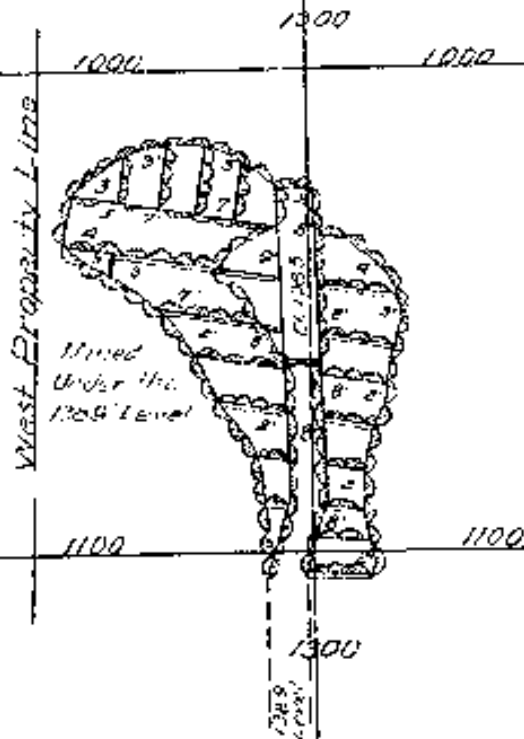
- SHaft
- ⊙ DRILL HOLE
- ⊠ RAISE
- ▨ ROCK



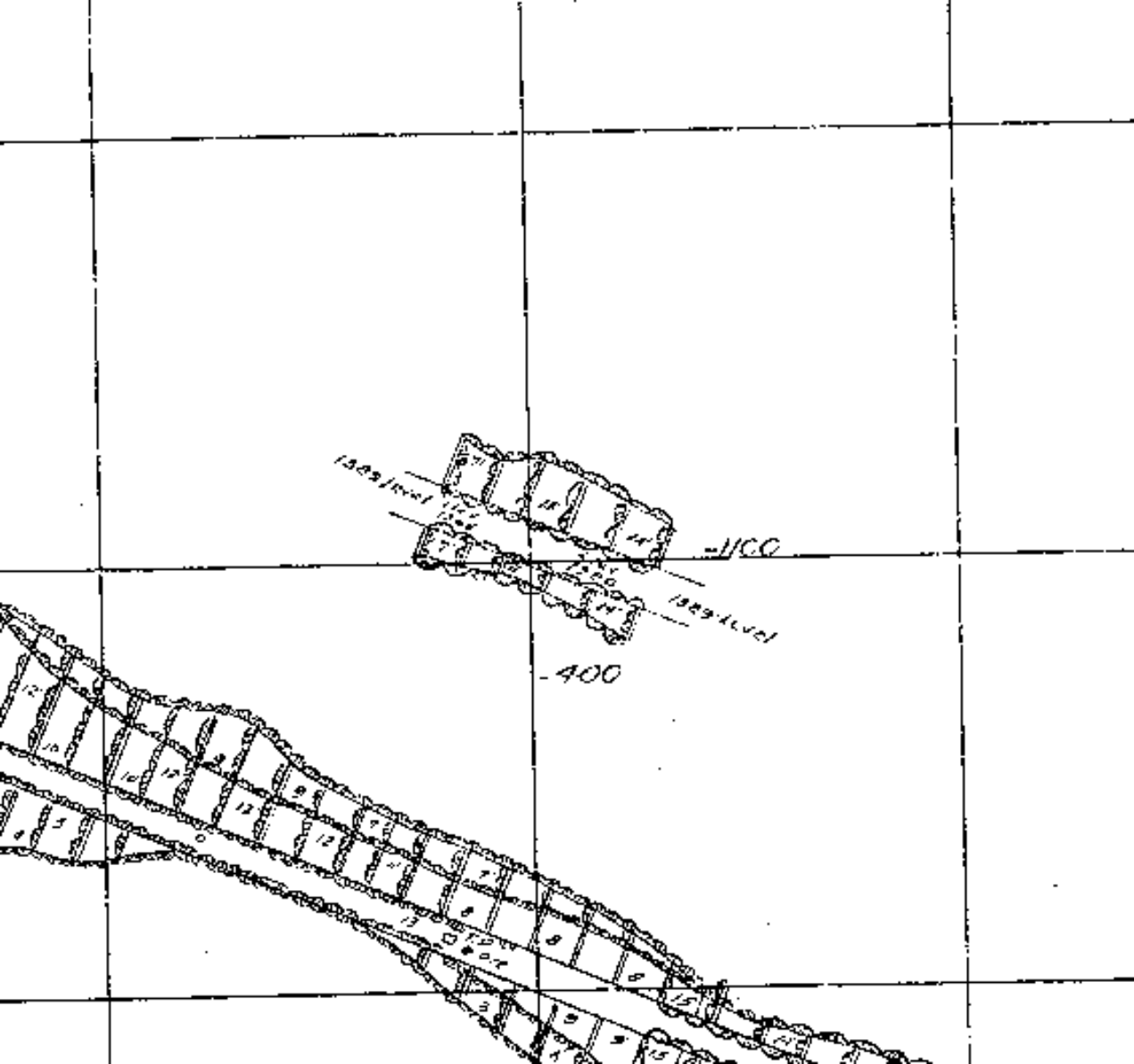
ARTHUR IRON MINING CO.
SLICE MAP
UTICA MINE
WEST FORTY
1389' LEVEL

MINING ENGINEER'S OFFICE HIBBING, MINN.
EASTERN DISTRICT MAP TO





2
©
E. 1513.0



NORTH SECTION LINE

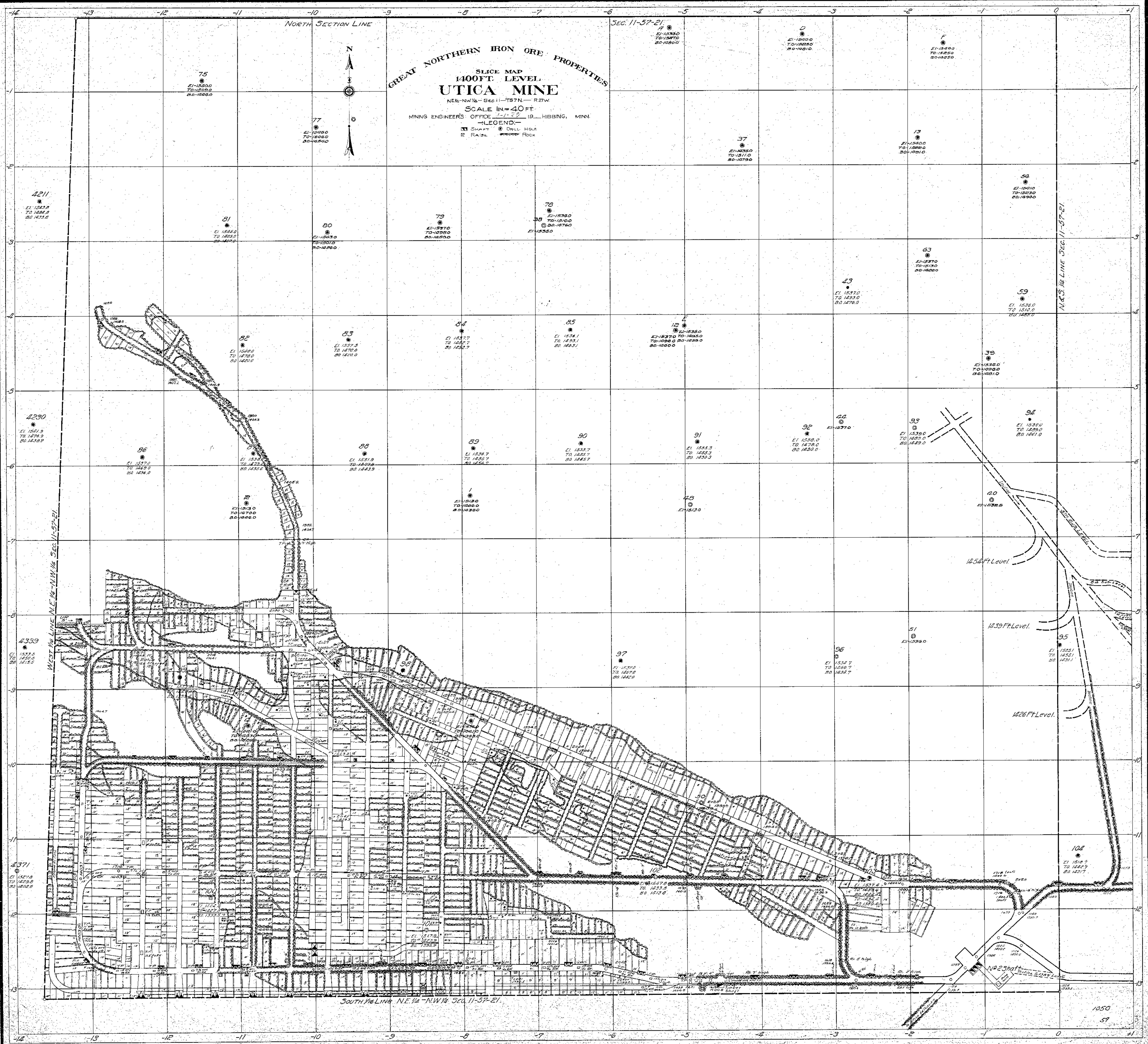
Sec. 11-57-21

GREAT NORTHERN IRON ORE PROPERTIES

SLICE MAP 1400 FT. LEVEL UTICA MINE

NE 1/4 - NW 1/4 - Sec. 11 - T87N - R21W
SCALE 1" = 40 FT.
MINING ENGINEERS' OFFICE, 1919 HIBBING, MINN.

LEGEND:
S Shaft
D Well Hole
R R.A.S.
Rock



GRAND NORTHERN IRON ORE PROPERTIES
SLICE MAP
1413 FT. LEVEL
UTICA MINE

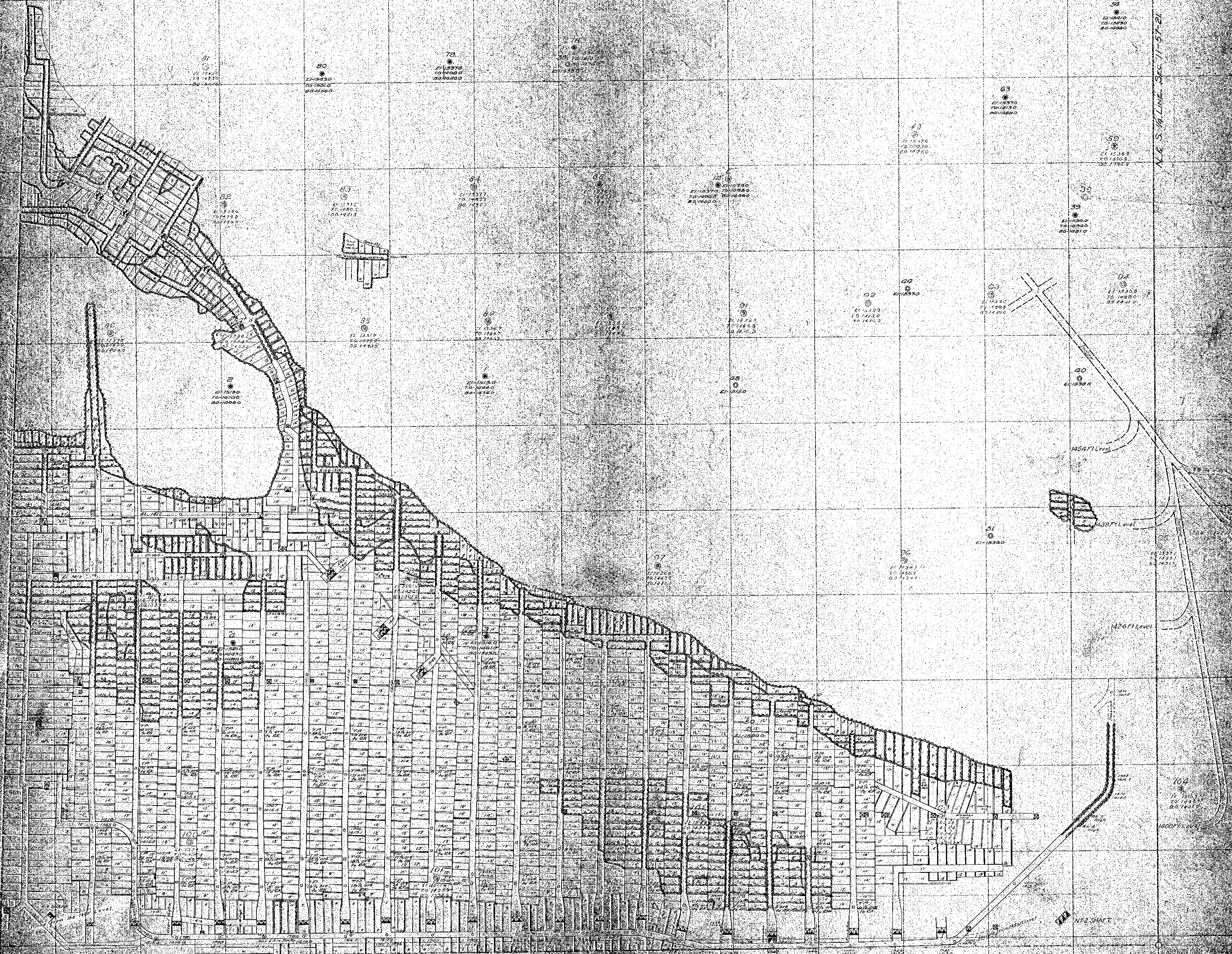
NEW N.W. 1/4 SEC. 17 T. 67 N. R. 21 W.
SCALE, 1 IN. = 40 FT.
MINING ENGINEERS' OFFICE, 222 S. 10TH ST., MINN.

LEGEND:
SHAFT
RAISE
DRESSING ROOM
ROCK



Sec. 17-57-21

N. & S. 1/4 LINE, SEC. 17-57-21



S. 1/4 LINE, NEW N.W. 1/4 SEC. 17-57-21

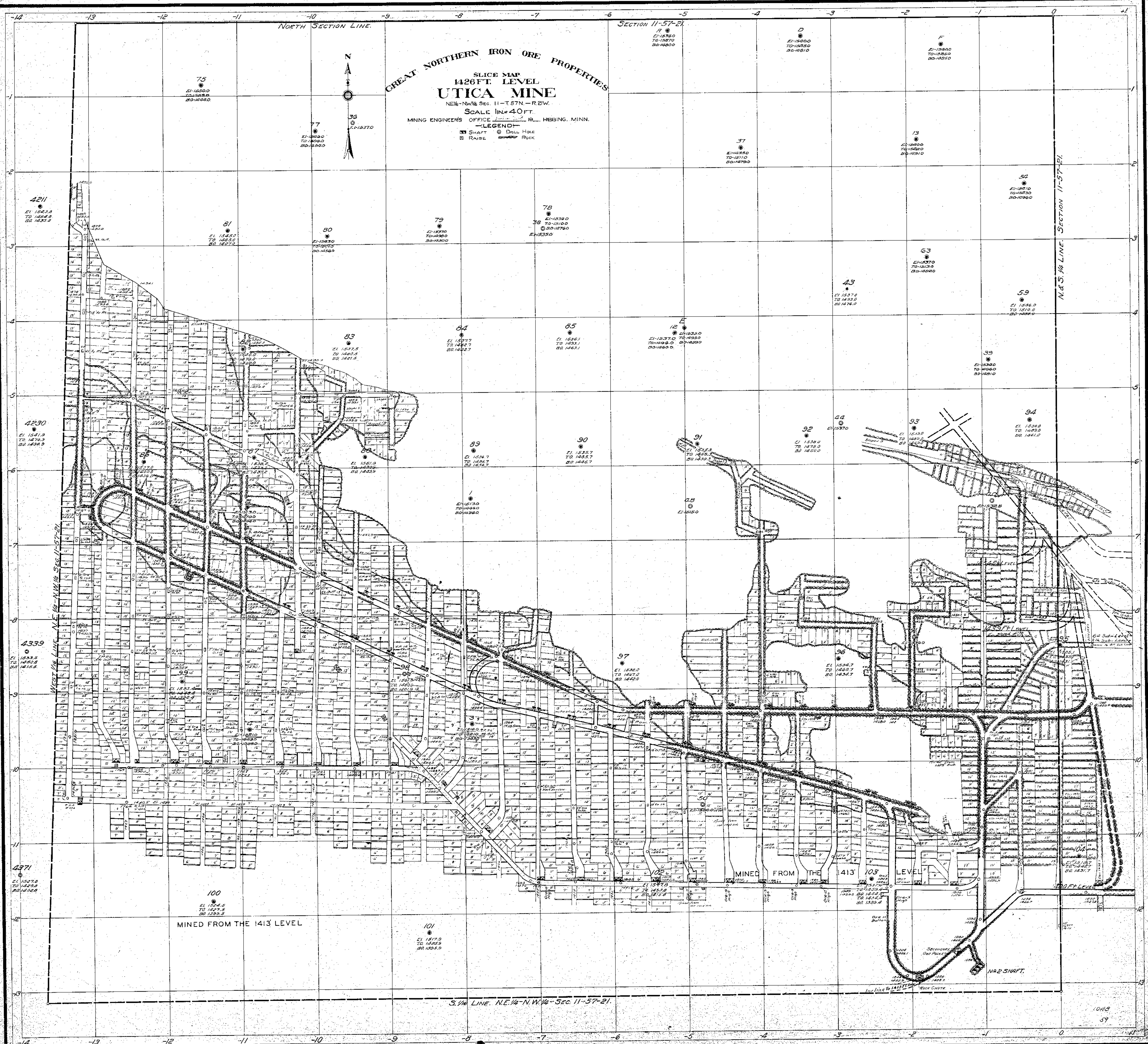
NORTH SECTION LINE.

SECTION 11-57-21.

UTICA MINE

SLICE MAP
1426 FT. LEVEL
NE 1/4 - NW 1/4 Sec. 11 - T. 57 N. - R. 21 W.
SCALE 1 in. = 40 FT.
MINING ENGINEERS OFFICE, Hibbing, Minn.

LEGEND:
S SHAFT D DRILL HOLE
R RAISE R Rock



MINED FROM THE 1413 LEVEL

MINED FROM THE 1413 LEVEL

1426 FT. LEVEL

N.P. SHAFT

S. 1/4 LINE. N.E. 1/4 - N.W. 1/4 - SEC. 11-57-21.

N.E. & S. 1/4 LINE. SECTION 11-57-21.

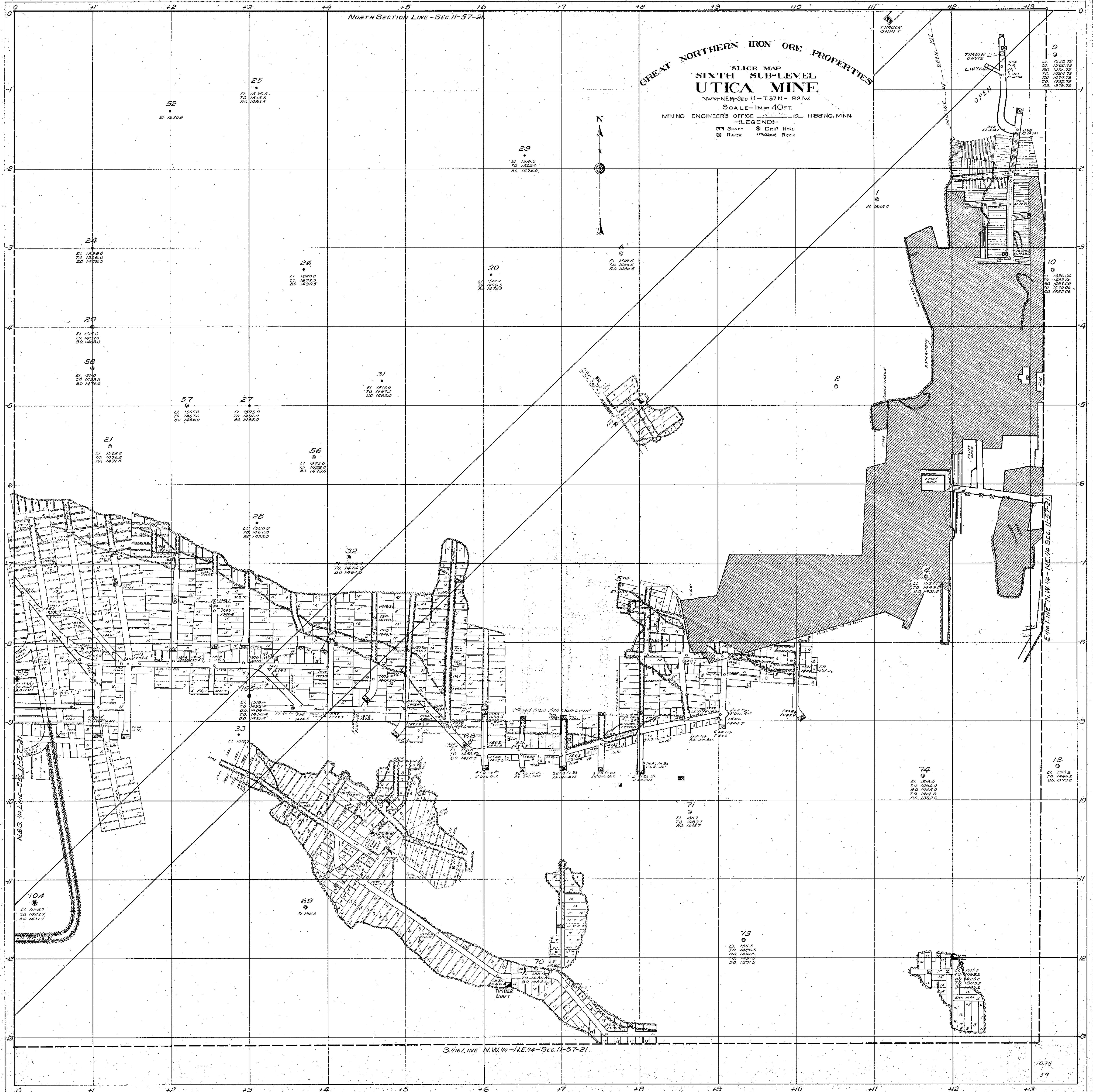
NORTH SECTION LINE - SEC. 11-57-21

GREAT NORTHERN IRON ORE PROPERTIES

SLICE MAP SIXTH SUB-LEVEL UTICA MINE

NW 1/4 - NE 1/4 - Sec. 11 - T. 57 N. - R. 21 W.
SCALE - 1" = 40 FT.
MINING ENGINEER'S OFFICE 1919 HIBBING, MINN.

LEGEND
SHAFT DRILL HOLE
RAISE RAISED ROCK



S. 1/2 LINE N.W. 1/4 - NE 1/4 - SEC. 11-57-21

NORTH SECTION LINE - SEC. 11-57-21.

GREAT NORTHERN IRON ORE PROPERTIES

SLICE MAP SEVENTH SUB-LEVEL UTICA MINE

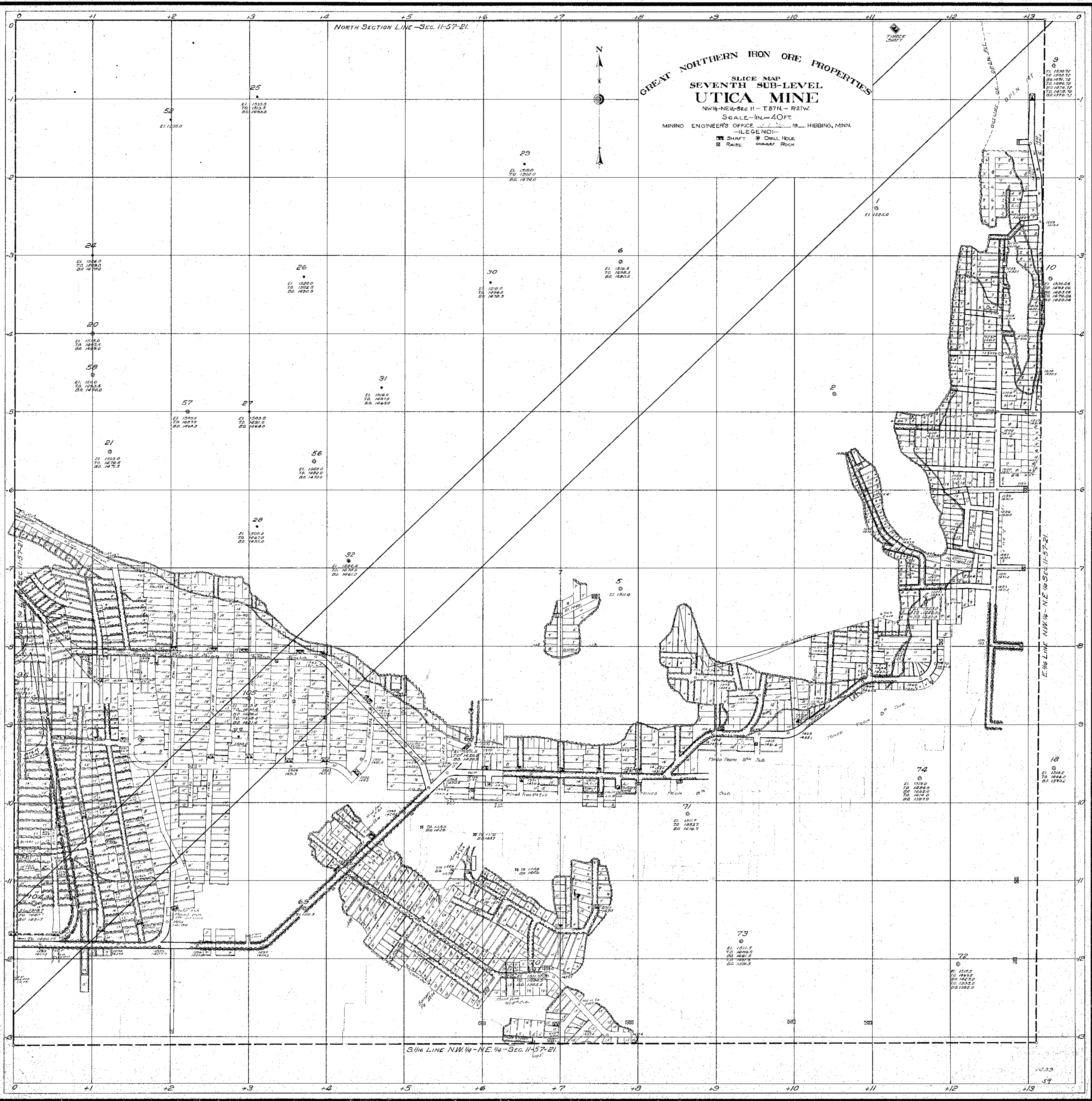
NW 1/4 - NE 1/4 - SEC. 11 - T. 87 N. - R. 21 W.

SCALE - 1 IN. = 40 FT.

MINING ENGINEER'S OFFICE 1919 HIBBING, MINN.

LEGEND:

- SHAFT
- RAISE
- DRILL HOLE
- ROCK



S. 1/2 LINE NW 1/4 - NE 1/4 - SEC. 11-57-21

N. SECTION LINE - SEC. 11-57-21.

GREAT NORTHERN IRON ORE PROPERTIES

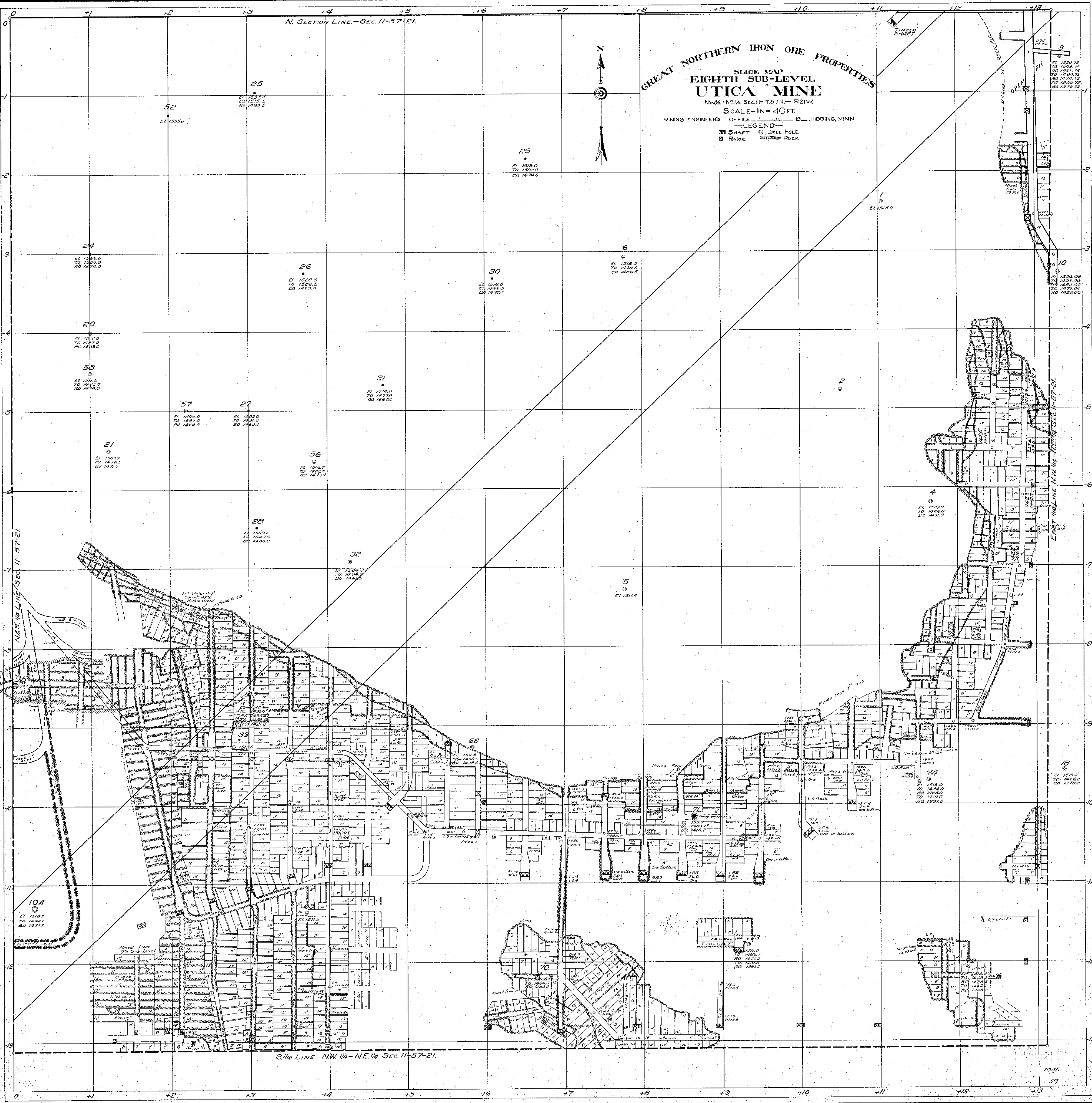
SUB-MAP EIGHTH SUB-LEVEL UTICA MINE

NW 1/4 - NE 1/4 Sec. 11 - T. 57 N. - R. 21 W.

SCALE - 1" = 40 FT.

MINING ENGINEER'S OFFICE - HIBBING, MINN.

LEGEND:
SHAFT DRILL HOLE
RAISE ROCK



NORTH SECTION LINE, SECTION 11-57-21.

GREAT NORTHERN IRON ORE PROPERTIES

SLICE MAP TENTH SUB-LEVEL UTICA MINE

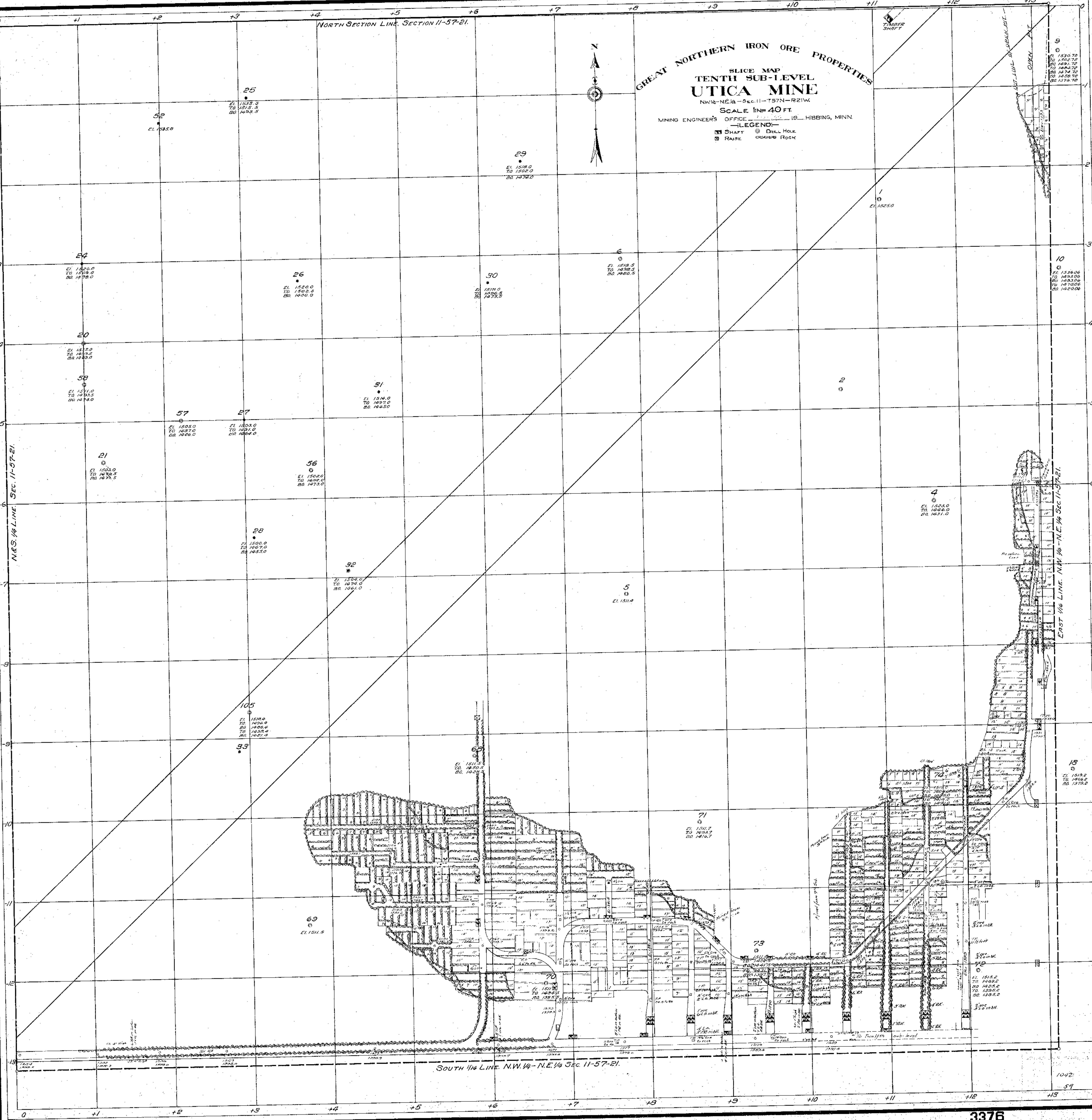
NW 1/4-NE 1/4 - Sec. 11-T57N-R21W

SCALE 1"=40 FT

MINING ENGINEER'S OFFICE 19 HIBBING, MINN.

LEGEND

- SHAFT
- DRILL HOLE
- RAISE
- ▨ GRAVEL ROCK



SOUTH 1/4 LINE, N.W. 1/4 - N.E. 1/4 SEC. 11-57-21.

NORTH SECTION LINE, SECTION 11-37-21.

ARTHUR IRON MINING COMPANY

SLICE MAP TWELFTH SUB LEVEL UTICA MINE

NW 1/4 NE 1/4 Sec. 11 - T57N - R21W.

MINING ENGINEER'S OFFICE,
EASTERN DISTRICT

HBBING MINNESOTA,
MAP 10



SCALE
0 20 40

Cut Line 7

Cut Line 7

SOUTH 1/16 LINE N.W. 1/4 N.E. 1/4 SEC. 11-37-21.

52
51
50
49
48
47
46
45
44
43
42
41
40
39
38
37
36
35
34
33
32
31
30
29
28
27
26
25
24
23
22
21
20
19
18
17
16
15
14
13
12
11
10
9
8
7
6
5
4
3
2
1

24
23
22
21
20
19
18
17
16
15
14
13
12
11
10
9
8
7
6
5
4
3
2
1

52
51
50
49
48
47
46
45
44
43
42
41
40
39
38
37
36
35
34
33
32
31
30
29
28
27
26
25
24
23
22
21
20
19
18
17
16
15
14
13
12
11
10
9
8
7
6
5
4
3
2
1

24
23
22
21
20
19
18
17
16
15
14
13
12
11
10
9
8
7
6
5
4
3
2
1

37
36
35
34
33
32
31
30
29
28
27
26
25
24
23
22
21
20
19
18
17
16
15
14
13
12
11
10
9
8
7
6
5
4
3
2
1

21
20
19
18
17
16
15
14
13
12
11
10
9
8
7
6
5
4
3
2
1

27
26
25
24
23
22
21
20
19
18
17
16
15
14
13
12
11
10
9
8
7
6
5
4
3
2
1

20
19
18
17
16
15
14
13
12
11
10
9
8
7
6
5
4
3
2
1

32
31
30
29
28
27
26
25
24
23
22
21
20
19
18
17
16
15
14
13
12
11
10
9
8
7
6
5
4
3
2
1

20
19
18
17
16
15
14
13
12
11
10
9
8
7
6
5
4
3
2
1

20
19
18
17
16
15
14
13
12
11
10
9
8
7
6
5
4
3
2
1

32
31
30
29
28
27
26
25
24
23
22
21
20
19
18
17
16
15
14
13
12
11
10
9
8
7
6
5
4
3
2
1

20
19
18
17
16
15
14
13
12
11
10
9
8
7
6
5
4
3
2
1

32
31
30
29
28
27
26
25
24
23
22
21
20
19
18
17
16
15
14
13
12
11
10
9
8
7
6
5
4
3
2
1

20
19
18
17
16
15
14
13
12
11
10
9
8
7
6
5
4
3
2
1

20
19
18
17
16
15
14
13
12
11
10
9
8
7
6
5
4
3
2
1

20
19
18
17
16
15
14
13
12
11
10
9
8
7
6
5
4
3
2
1

20
19
18
17
16
15
14
13
12
11
10
9
8
7
6
5
4
3
2
1

20
19
18
17
16
15
14
13
12
11
10
9
8
7
6
5
4
3
2
1

20
19
18
17
16
15
14
13
12
11
10
9
8
7
6
5
4
3
2
1

6
5
4
3
2
1

5
4
3
2
1

7
6
5
4
3
2
1

2
1

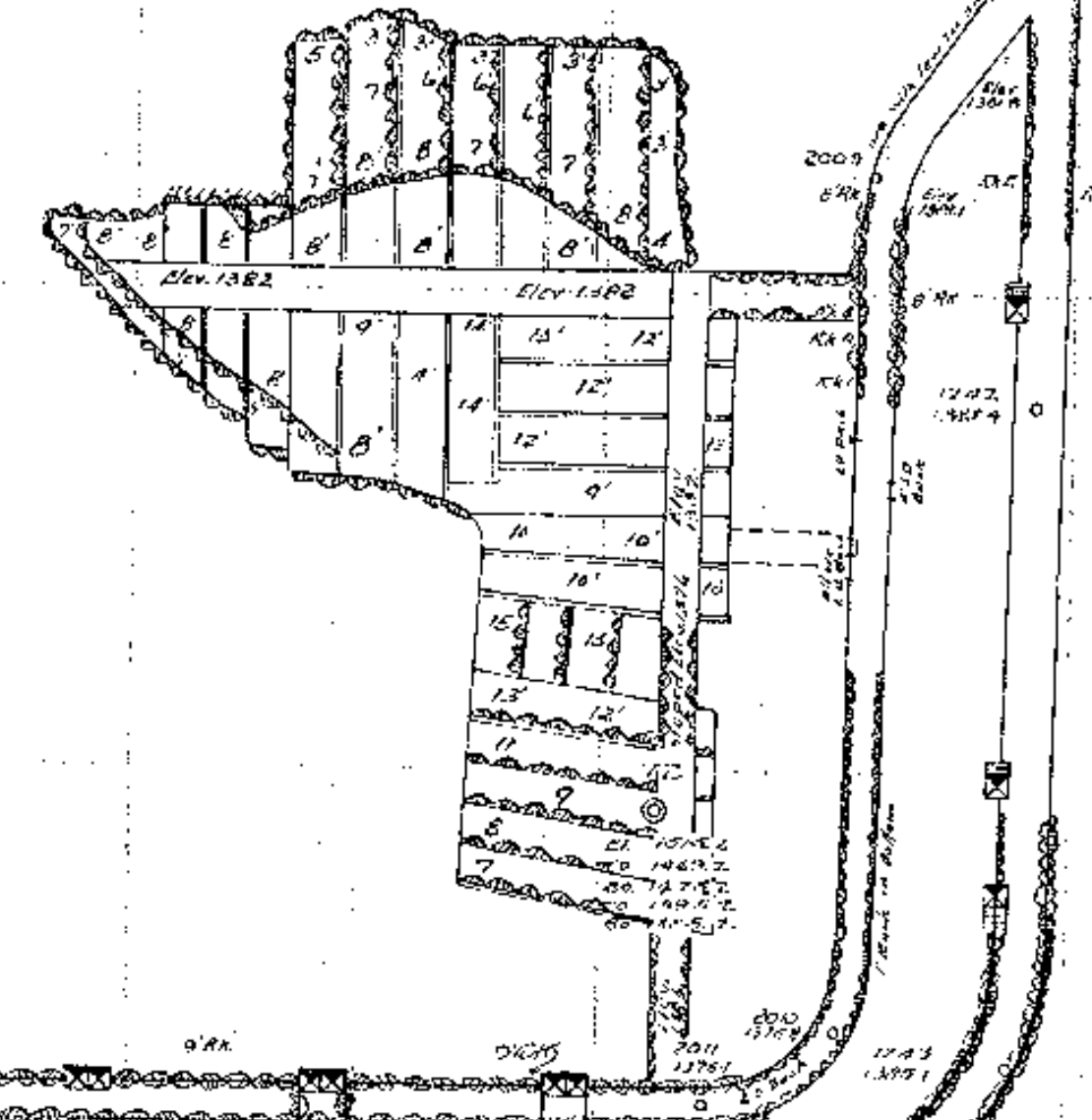
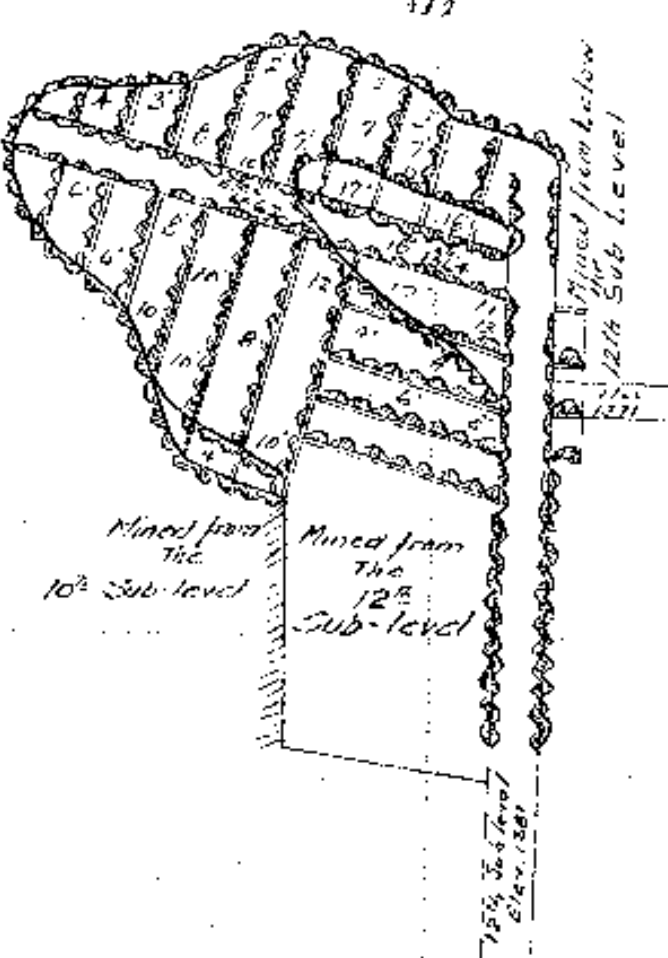
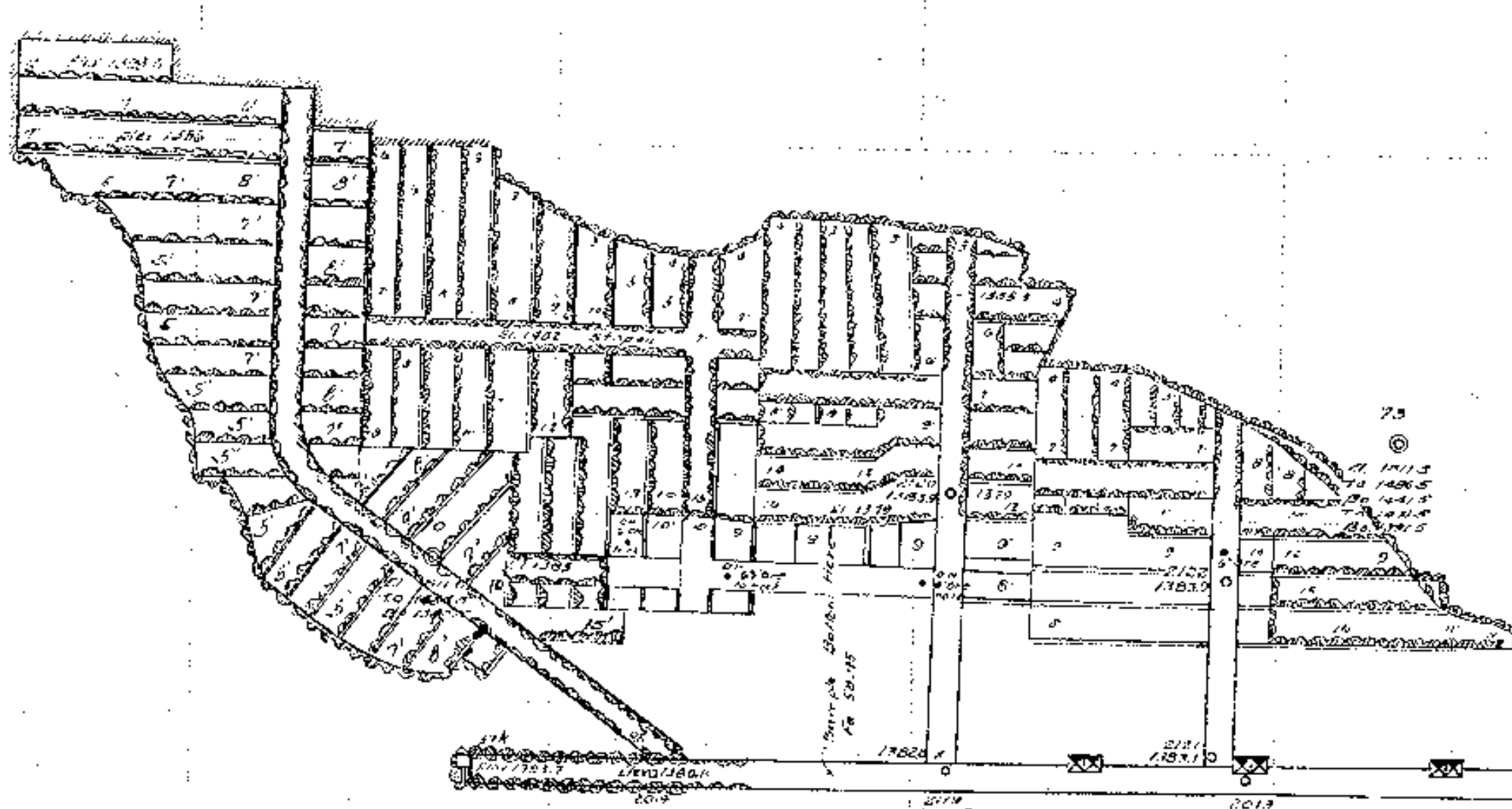
4
3
2
1

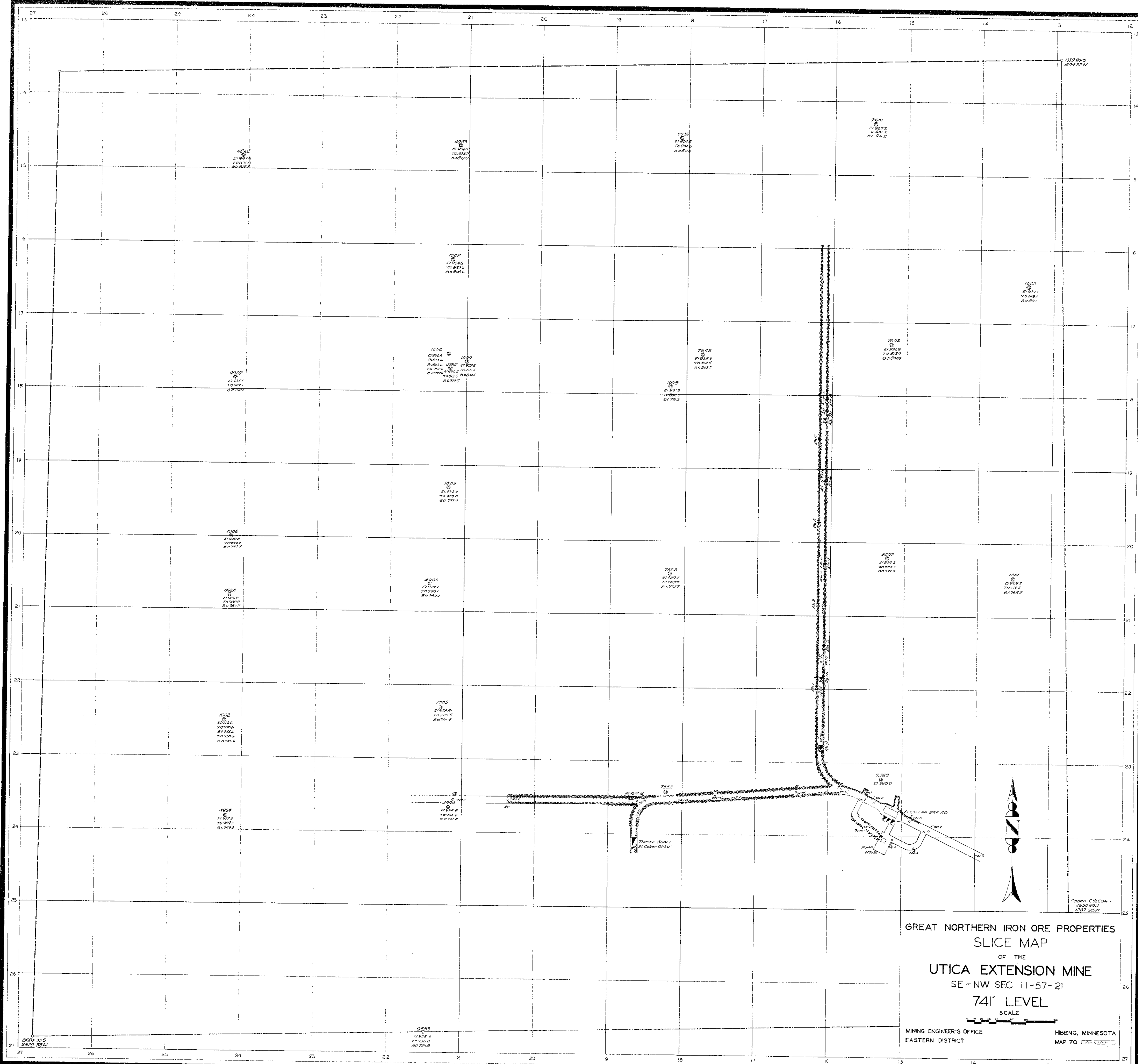
10
9
8
7
6
5
4
3
2
1

10
9
8
7
6
5
4
3
2
1

14
13
12
11
10
9
8
7
6
5
4
3
2
1

12
11
10
9
8
7
6
5
4
3
2
1





GREAT NORTHERN IRON ORE PROPERTIES
 SLICE MAP
 OF THE
 UTICA EXTENSION MINE
 SE-NW SEC 11-57-21.
 741' LEVEL
 SCALE
 MINING ENGINEER'S OFFICE
 EASTERN DISTRICT
 HIBBING, MINNESOTA
 MAP TO 625 626'

NORTH SECTION LINE, SEC. 11-57-21.

GREAT NORTHERN IRON ORE PROPERTIES

SLICE MAP NINTH SUB-LEVEL UTICA MINE

NW 1/4-NE 1/4-SEC. 11-57N-R.21W.

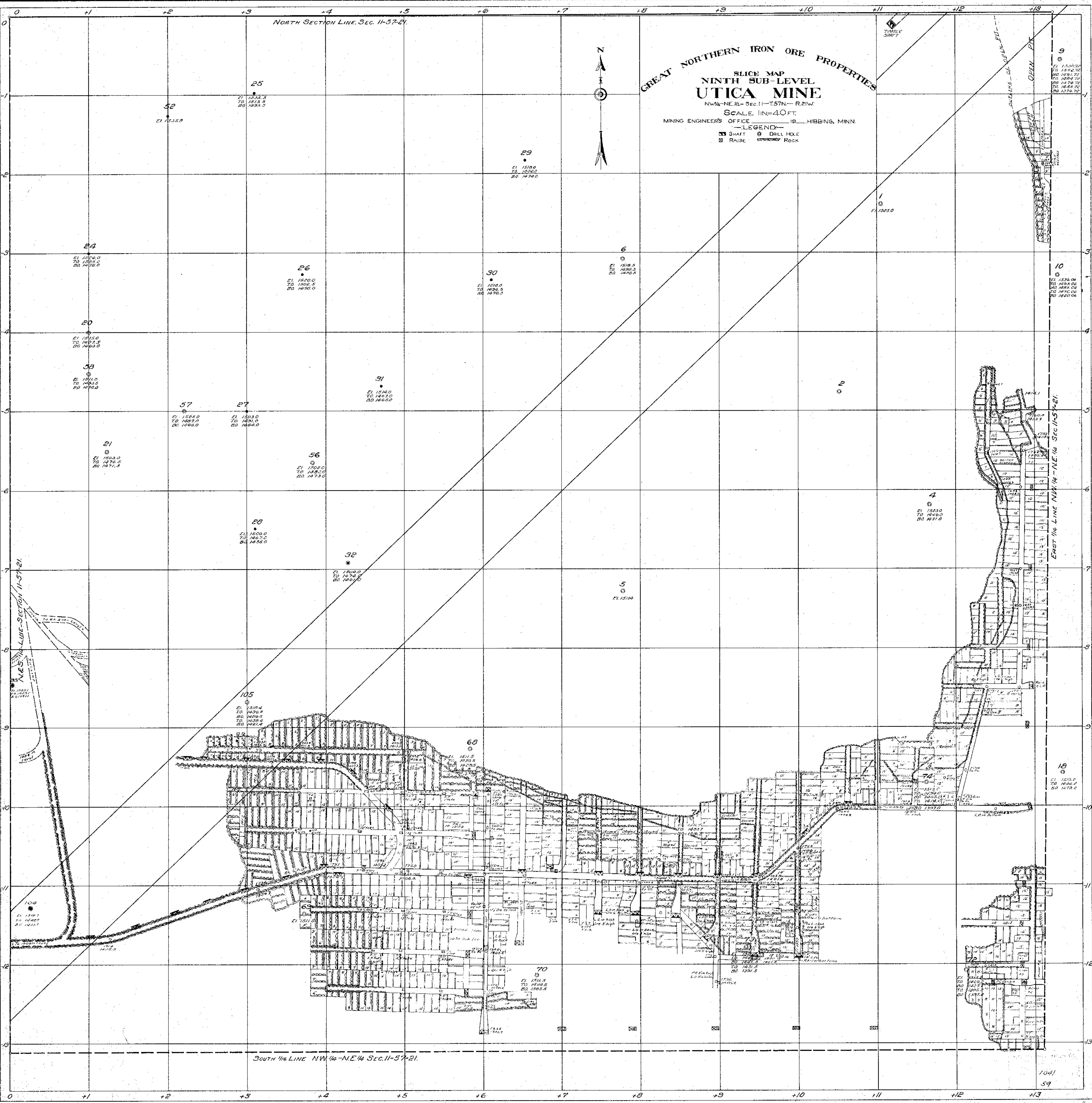
SCALE, 1"=40 FT.

MINING ENGINEER'S OFFICE 19... HIBBING, MINN.

LEGEND

SHAFT DRILL HOLE

RAISE ROCK



SOUTH 1/4 LINE NW 1/4-NE 1/4 SEC. 11-57-21.

GREAT NORTHERN IRON ORE PROPERTIES
SLICE MAP
ELEVENTH SUB-LEVEL
UTICA MINE

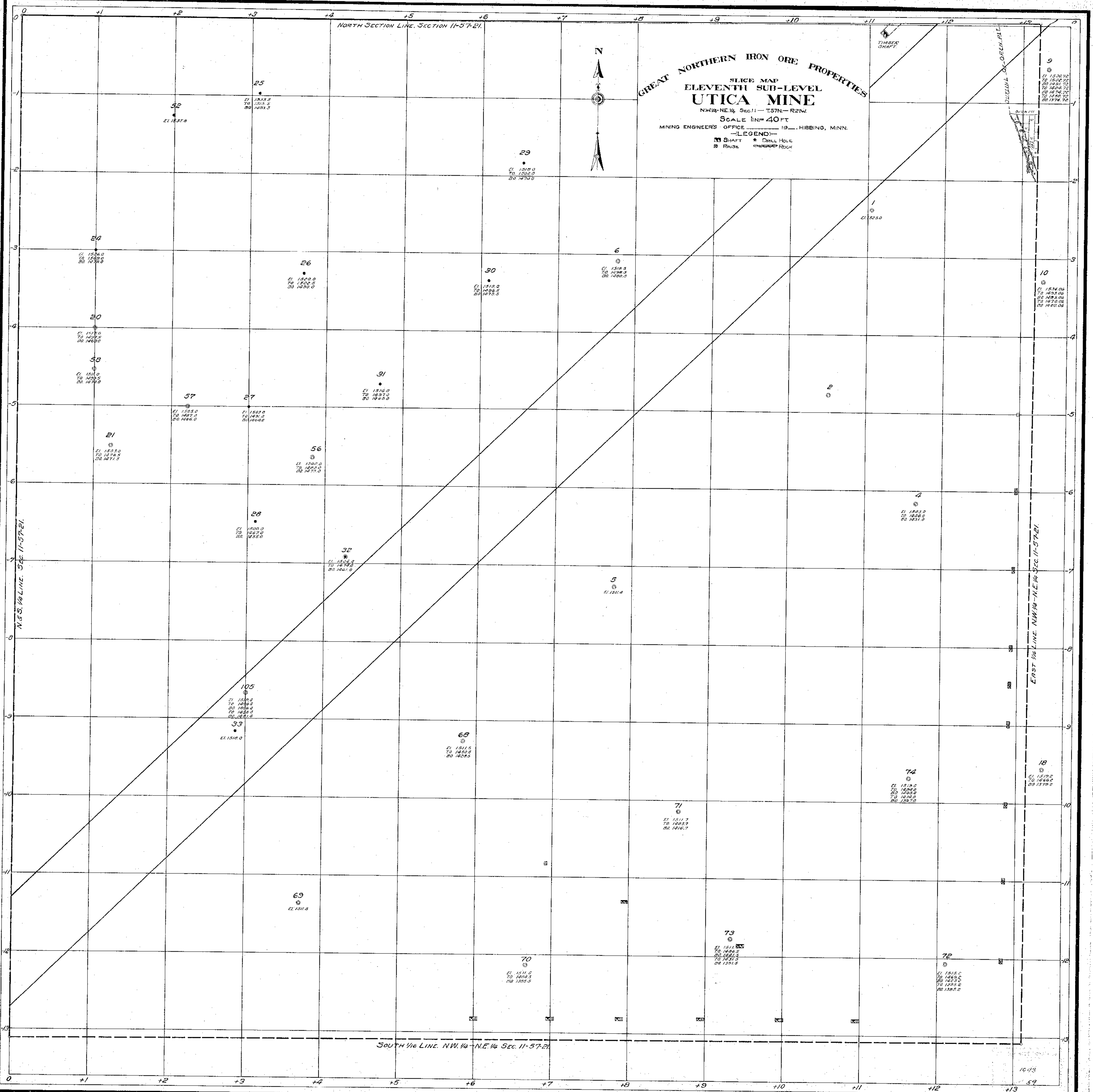
NW 1/4 - NE 1/4 Sec. 11 - T. 57N - R. 2W.

SCALE 1" = 40 FT.

MINING ENGINEER'S OFFICE 19... HIBBING, MINN.

LEGEND

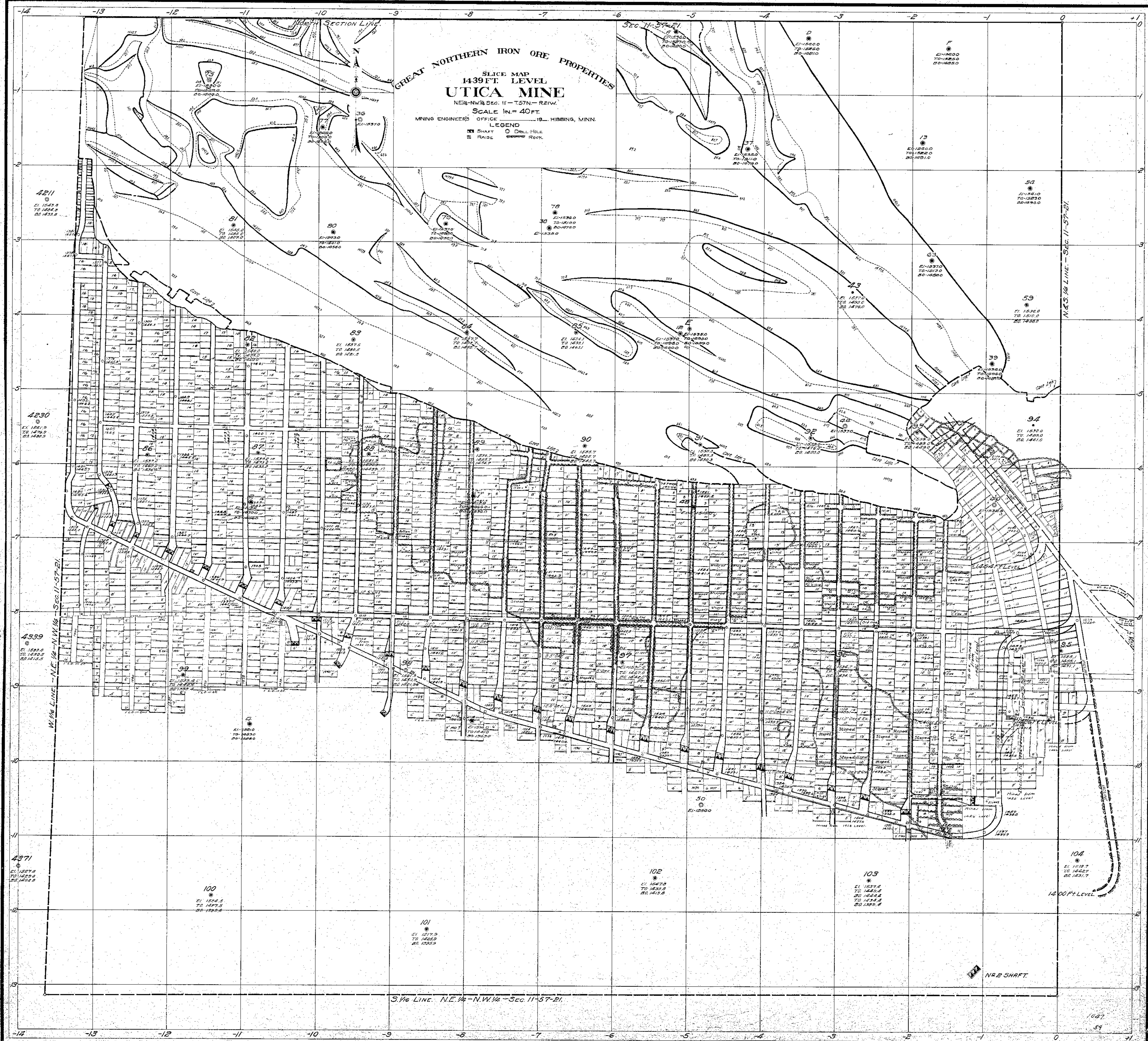
SHAFT DRILL HOLE
RAISE ROCK



GREAT NORTHERN IRON ORE PROPERTIES
SLICE MAP
1439 FT LEVEL
UTICA MINE

NE 1/4 - NW 1/4 Sec. 11 - T.57N - R.21W.
SCALE 1" = 40 FT.
MINING ENGINEER'S OFFICE - Hibbing, Minn.

LEGEND
SHAFT DRILL HOLE
RAISE Rock



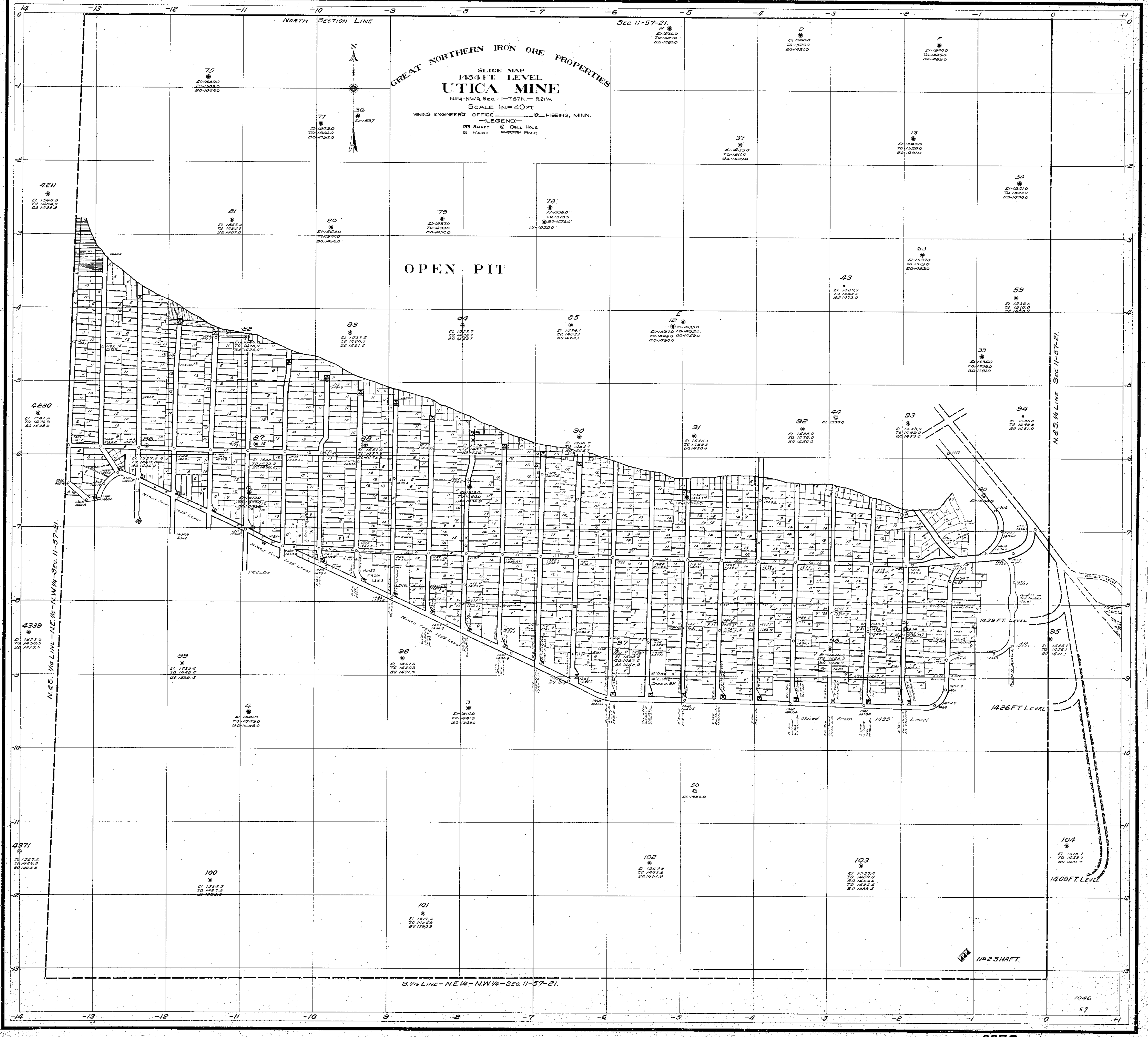
N&S LINE - SEC. 11-57-21

W 1/2 LINE - NE 1/4 - NW 1/4 Sec. 11 - 57-21

S 1/2 LINE - NE 1/4 - NW 1/4 - Sec. 11 - 57-21

N&S SHAFT

1400 FT LEVEL



GREAT NORTHERN IRON ORE PROPERTIES
SLICE MAP
1434 FT. LEVEL
UTICA MINE
NE 1/4 NW 1/4 Sec. 11-T57N-R21W

SCALE 1" = 40 FT.
MINING ENGINEER'S OFFICE HIBBING, MINN.

LEGEND:
SHAFT
RAISE
DRILL HOLE
ROCK

OPEN PIT

S 1/2 LINE - NE 1/4 - NW 1/4 - SEC. 11-57-21

NORTH SECTION LINE.

Section 11-57-21.

GREAT NORTHERN IRON ORE PROPERTIES

SLICE MAP 1466 FT. LEVEL UTICA MINE

NE 1/4 - NW 1/4 - Sec. 11 - T. 57 N. - R. 21 W.
SCALE 1" = 40 FT.
MINING ENGINEERS OFFICE 18... HIBBING, MINN.

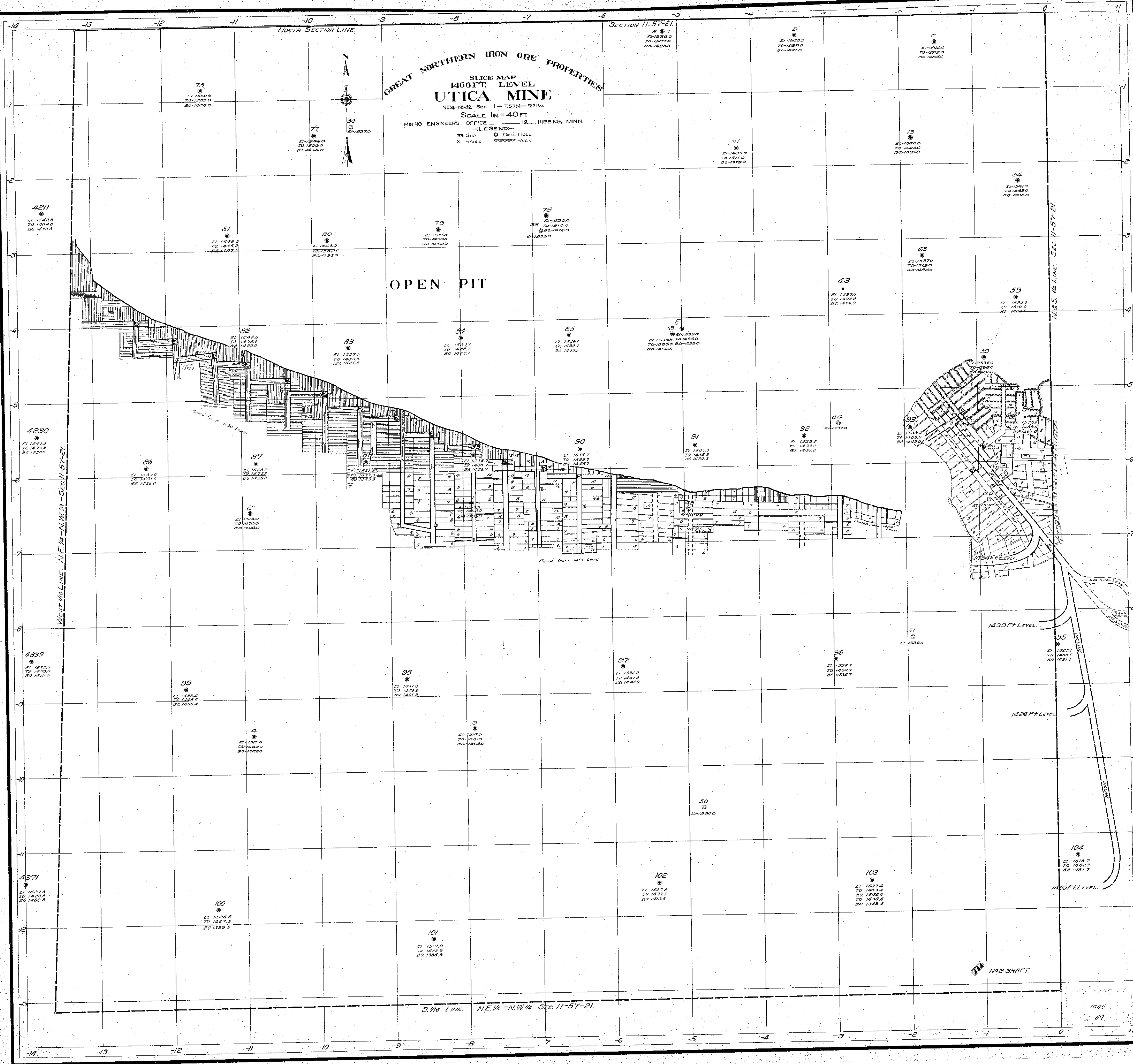
LEGEND:
● Shaft
○ Drill Hole
⊠ Raise
⊞ Rock

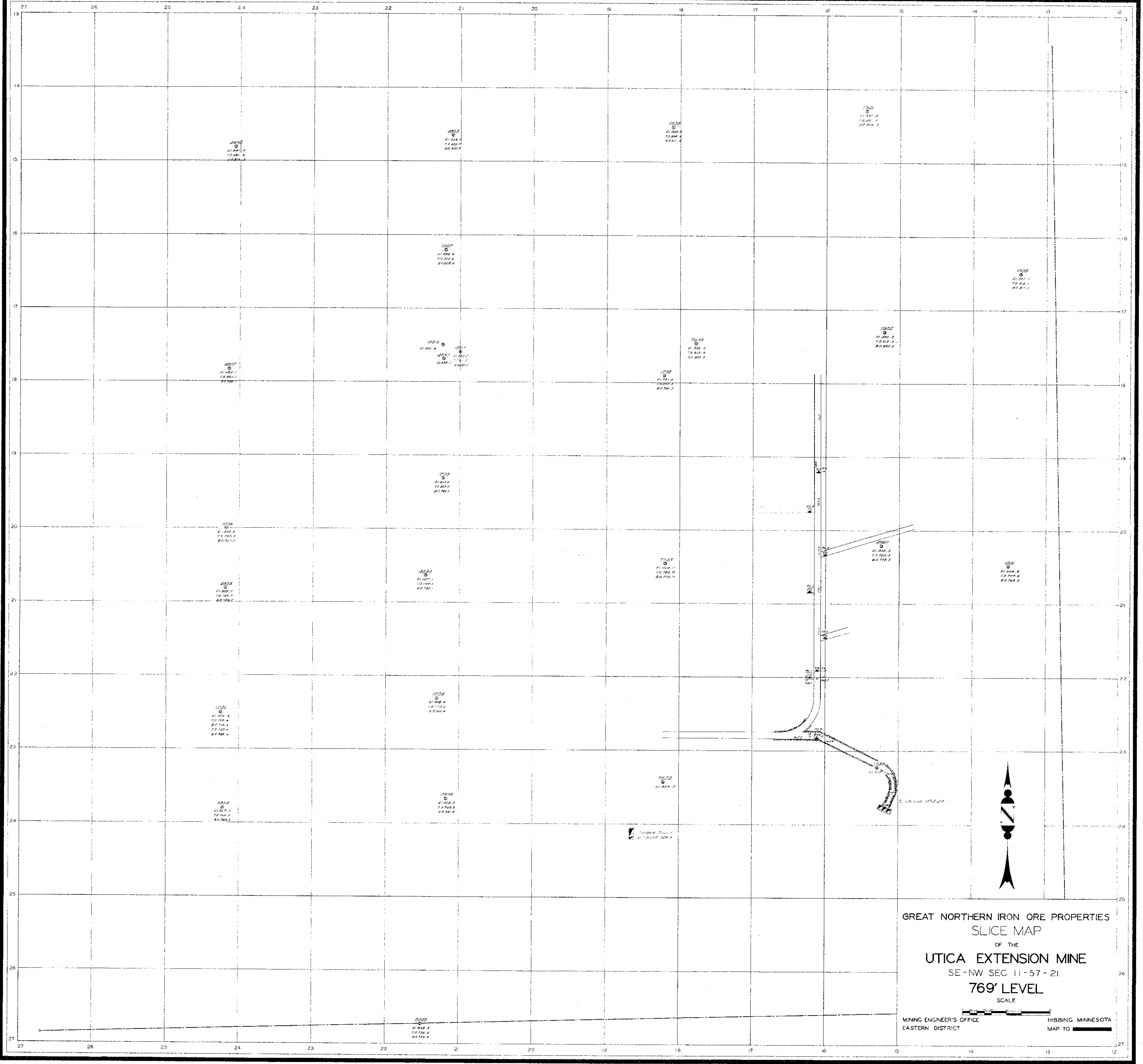
OPEN PIT

N.E. 1/4 LINE. SEC. 11-57-21.

WEST 1/2 LINE. N.E. 1/4 - N.W. 1/4 - SEC. 11-57-21.

S. 1/2 LINE. N.E. 1/4 - N.W. 1/4 SEC. 11-57-21.





GREAT NORTHERN IRON ORE PROPERTIES
 SLICE MAP
 OF THE
 UTICA EXTENSION MINE
 SE-NW SEC. 11-57-21
 769' LEVEL

SCALE
 MINING ENGINEER'S OFFICE
 EASTERN DISTRICT
 HIBBING MINNESOTA
 MAP TO

