

TH LAND & IMP CO.
SW-NE

FRENCH ADDITION
SE-NE

GENOA
SW-NW

O. I. M. CO.
SE-NW

SPARTA
SW-NE

SPARTA
SE-NE

LETH LIB. GARDENS
NW-SE

R. & M. MIN. ASS'N
NE-SE

GENOA
NW-SW

34
T 58N R 17W

GENOA - SPARTA
NE-SW

O. I. M. CO.
NW-SE

O. I. M. CO.
NE-SE

STATE TRUNK HIGHWAY

O. I. M. CO.
SW-SE

R. & M. MIN. ASS'N
SE-SE

GENOA - SPARTA
SW-SW

GENOA - SPARTA

LEAN ORE DUMP

M.P. & L. CO. POWER LINE

GENOA - SPARTA
SE-SW

GENOA - SPARTA

MORROW EXT.
LOT 2

DEPOT

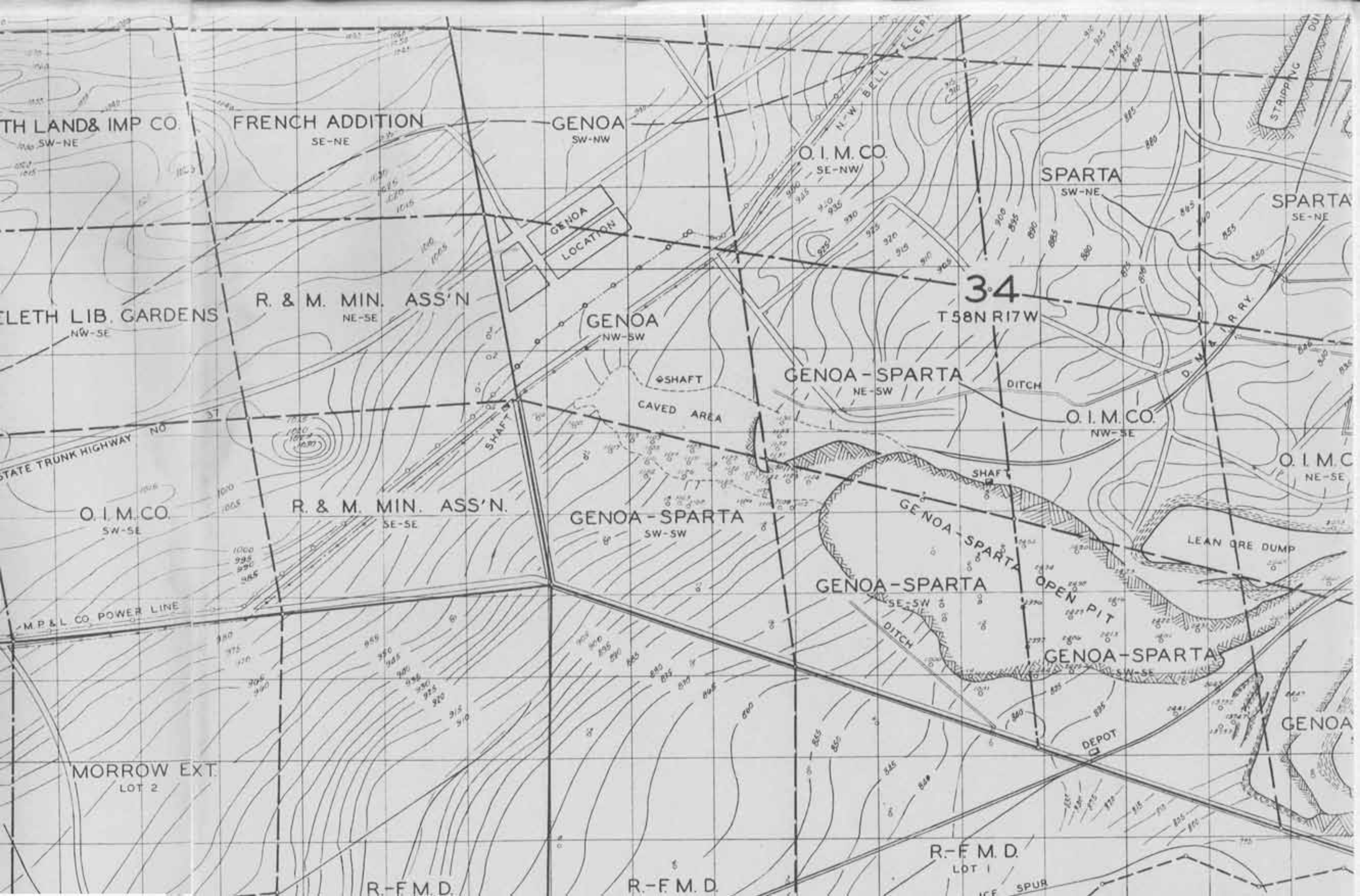
GENOA

R-F.M.D.

R-F.M.D.

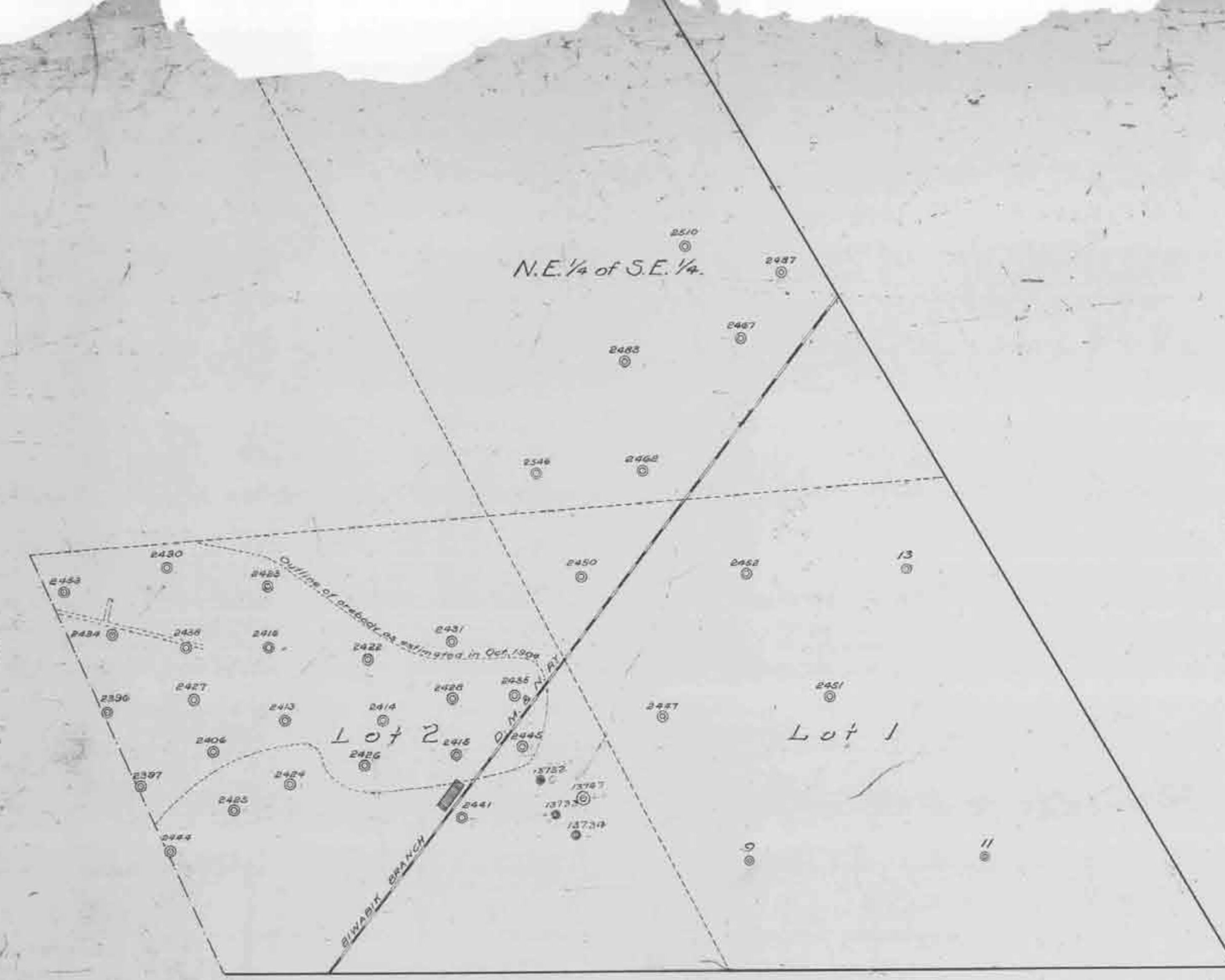
R-F.M.D.
LOT 1

ICE SPUR

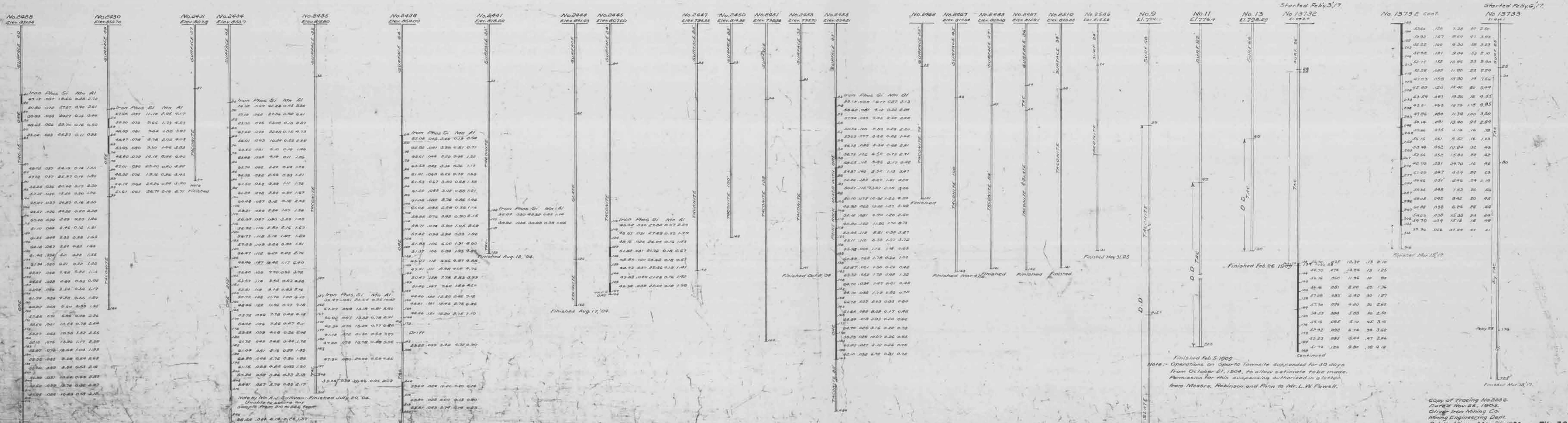


Sec. 34, Town. 58, Range 17.

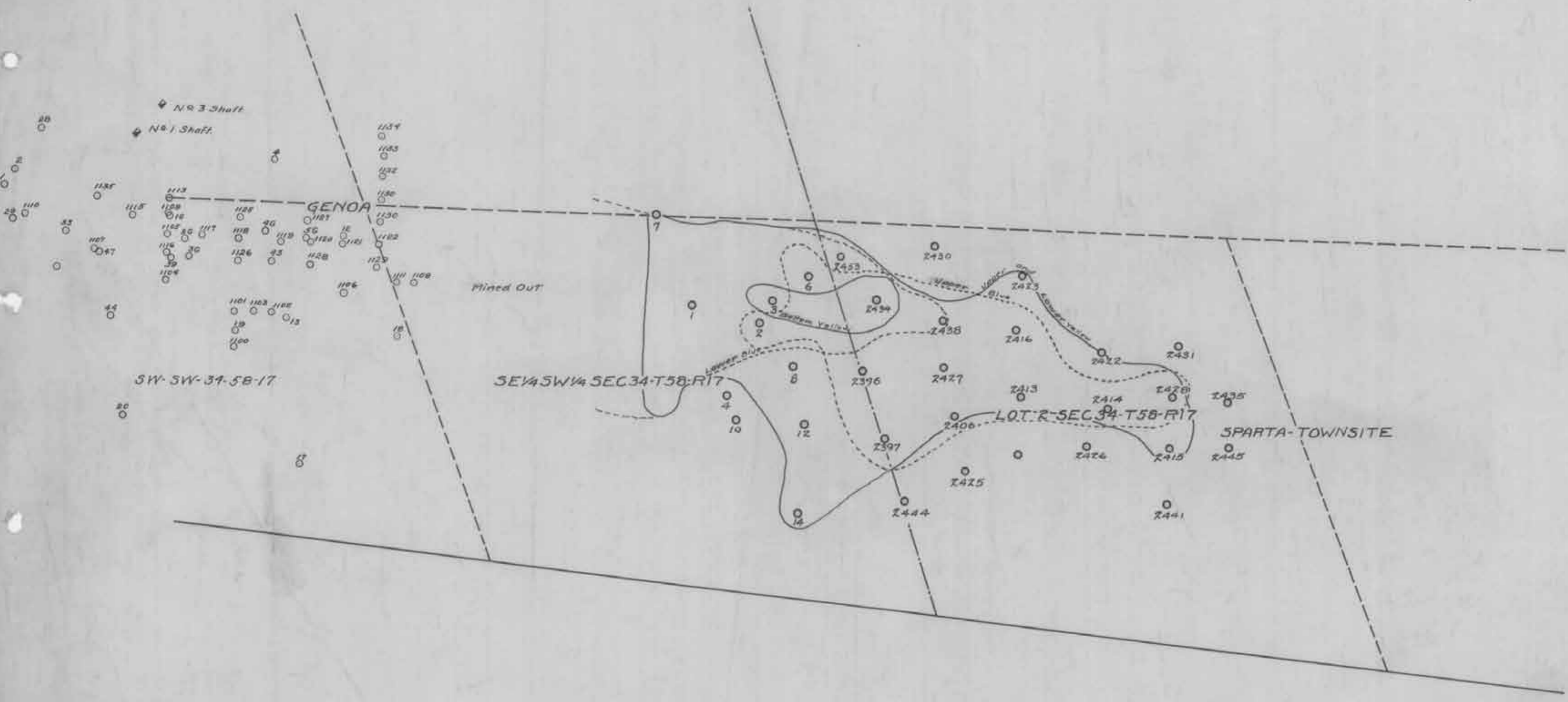
Scale of Plot: 200'=1 Scale of Pits: 80'=1



Additional Exploration data

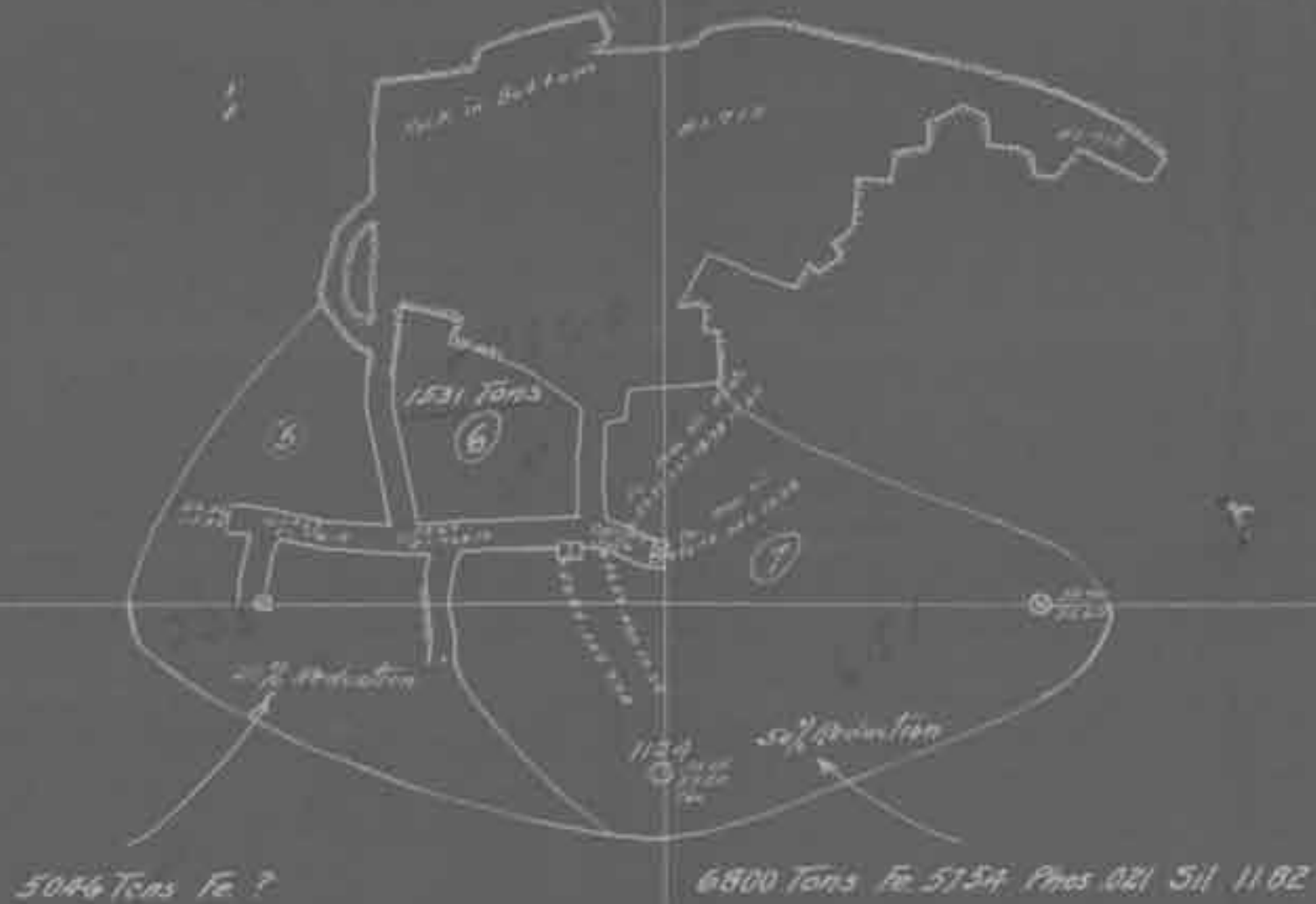


Copy of Tracing Mailed
Chas. W. Powell
Oliver Iron Mining Co.
Mining Engineering Dept.
Duluth, Minn., May 26, 1906
(C.S. 1)
File 3207 A,B



□ bessemer
□ nonbessemer

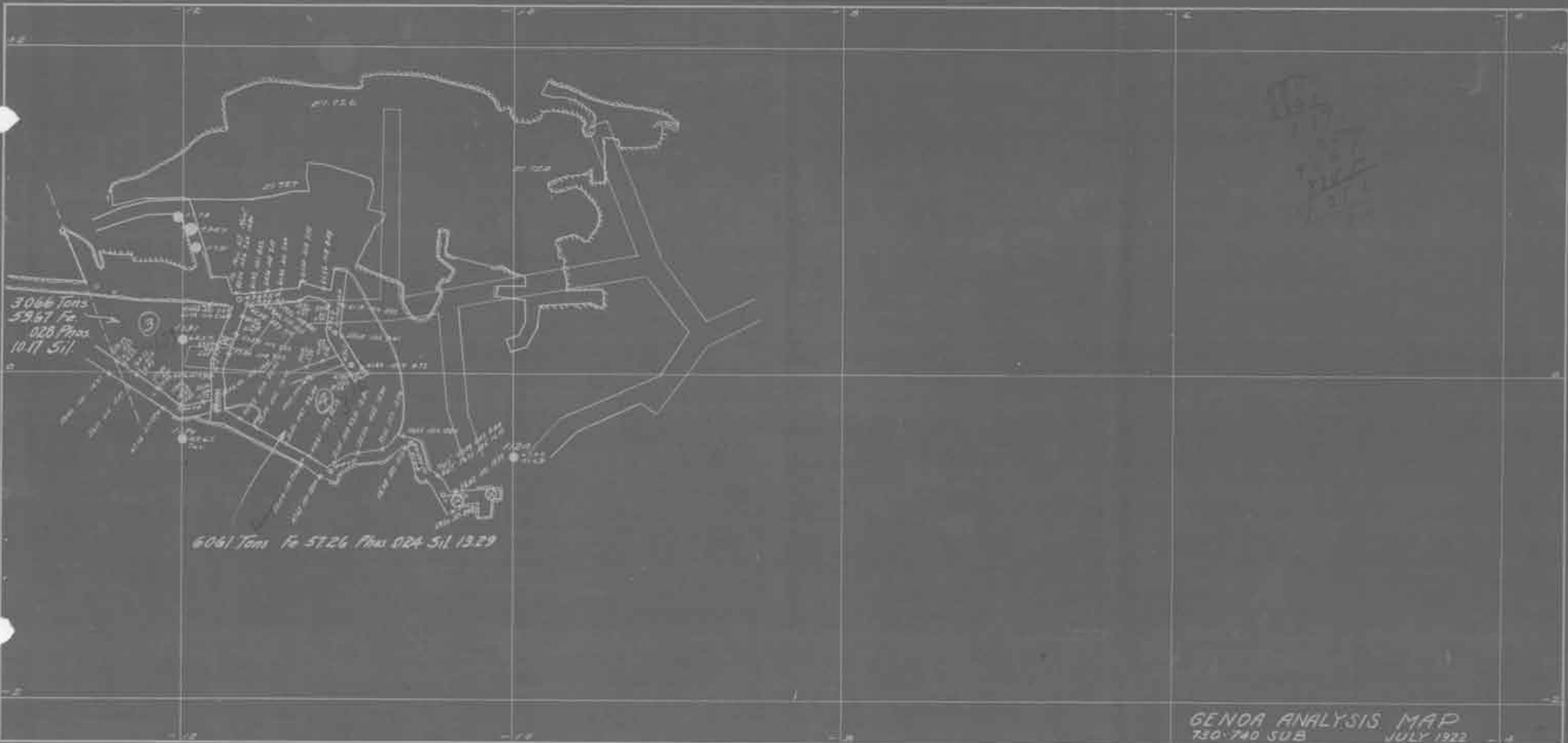
Scale 200' = 1"
Map No 197
Sept 26 1911
Revised Dec 21 1916



GENOA ANALYSIS MAP
 700-710 SUB
 JULY 1922



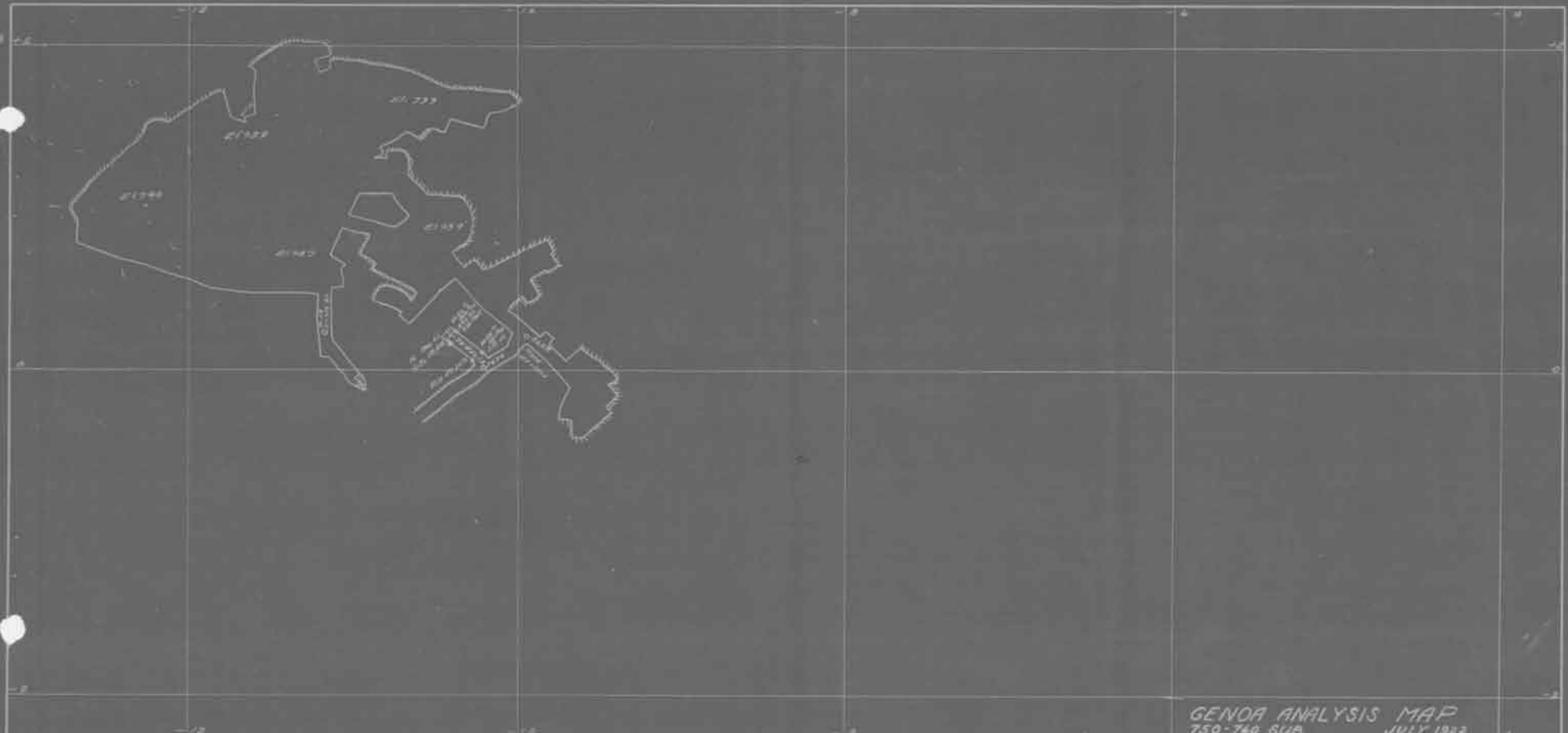
GENOA ANALYSIS MAP
720-730 SUB JULY 1922



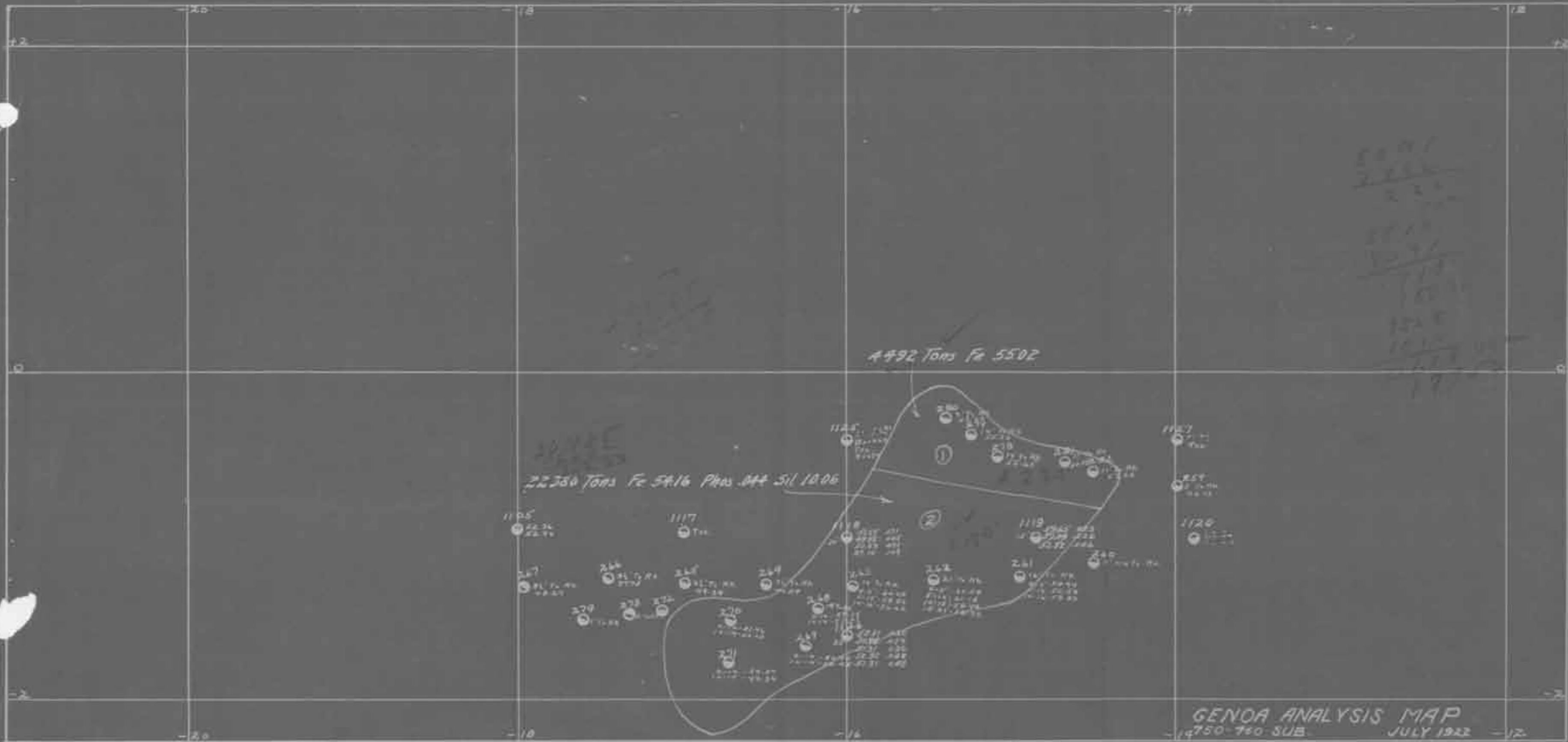
3066 Tons
5967 Fe
028 Phos
10.17 Sil.

6061 Tons Fe 57.26 Phos 0.24 Sil 13.29

GENOA ANALYSIS MAP
730-740 SUB
JULY 1922



GENOA ANALYSIS MAP
750-740 SUB
JULY 1942





GENOA ANALYSIS MAP
760:770 SUB. JULY 1922

24W 23 22 21 20 19 18 17 16 15

FEE

SEC 4

N.W. OF SW-SEC 34-5817
S.W. OF SW-SEC 34-5817

GENOA LEASE
M.A.F.S.D.

1115



SUB LEVEL

24W 23 22 21 20 19 18 17 16 15

See 730 546

REF. NW 1/4 SEC 34 T48N R15W - SEC 34 T48N R15W
GENCO LEASE

300 SUB. LEVEL - 44
I LEVEL



E. & S. 1116 LINE - SW 1/4 LINE - SEC. 34-58-17 - GENOA LEASE
GENOA LEASE

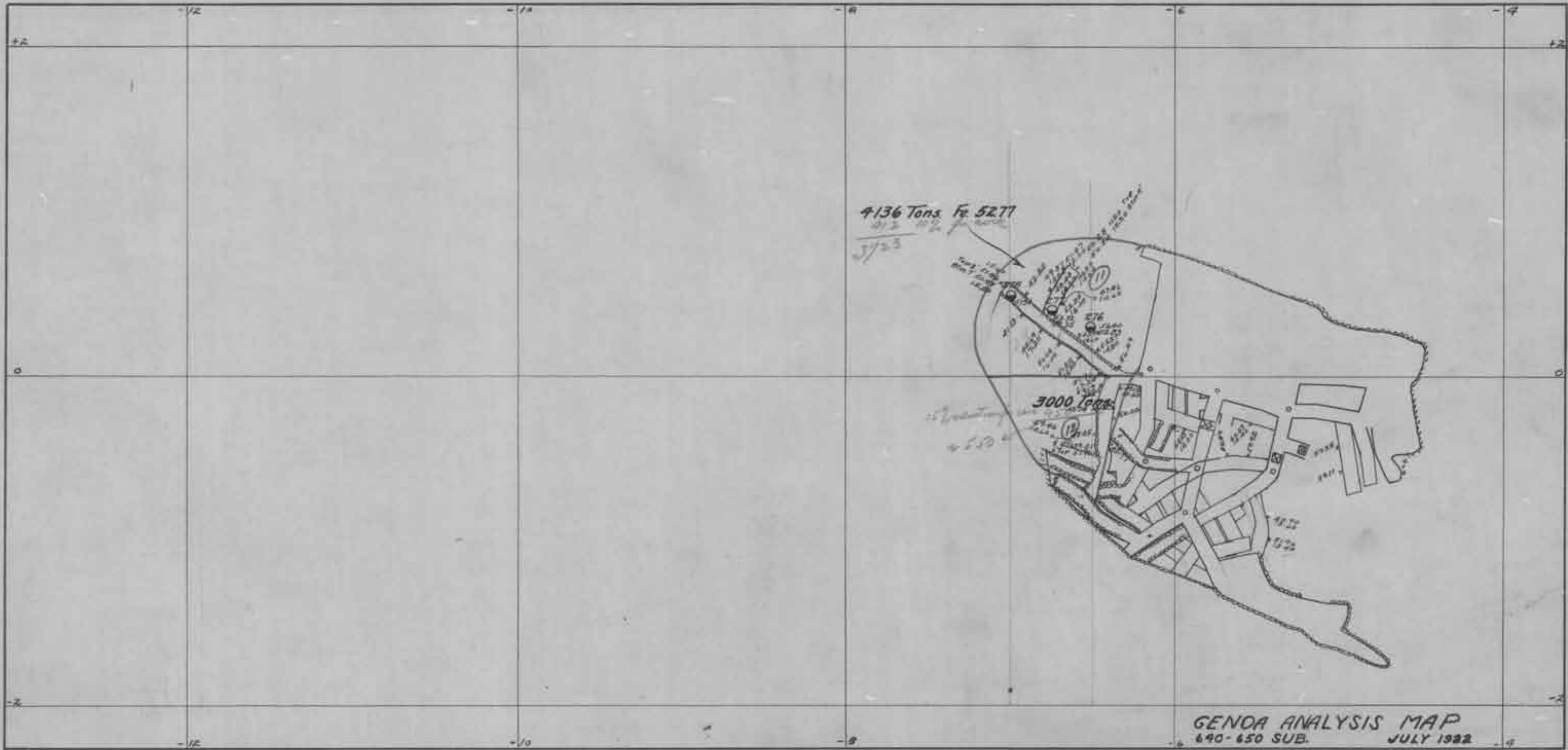


DETAILED PLAN
1:2500 SCALE
NOV 1950

620 LEVEL
(4TH LEVEL)

BLOCK 1

ME



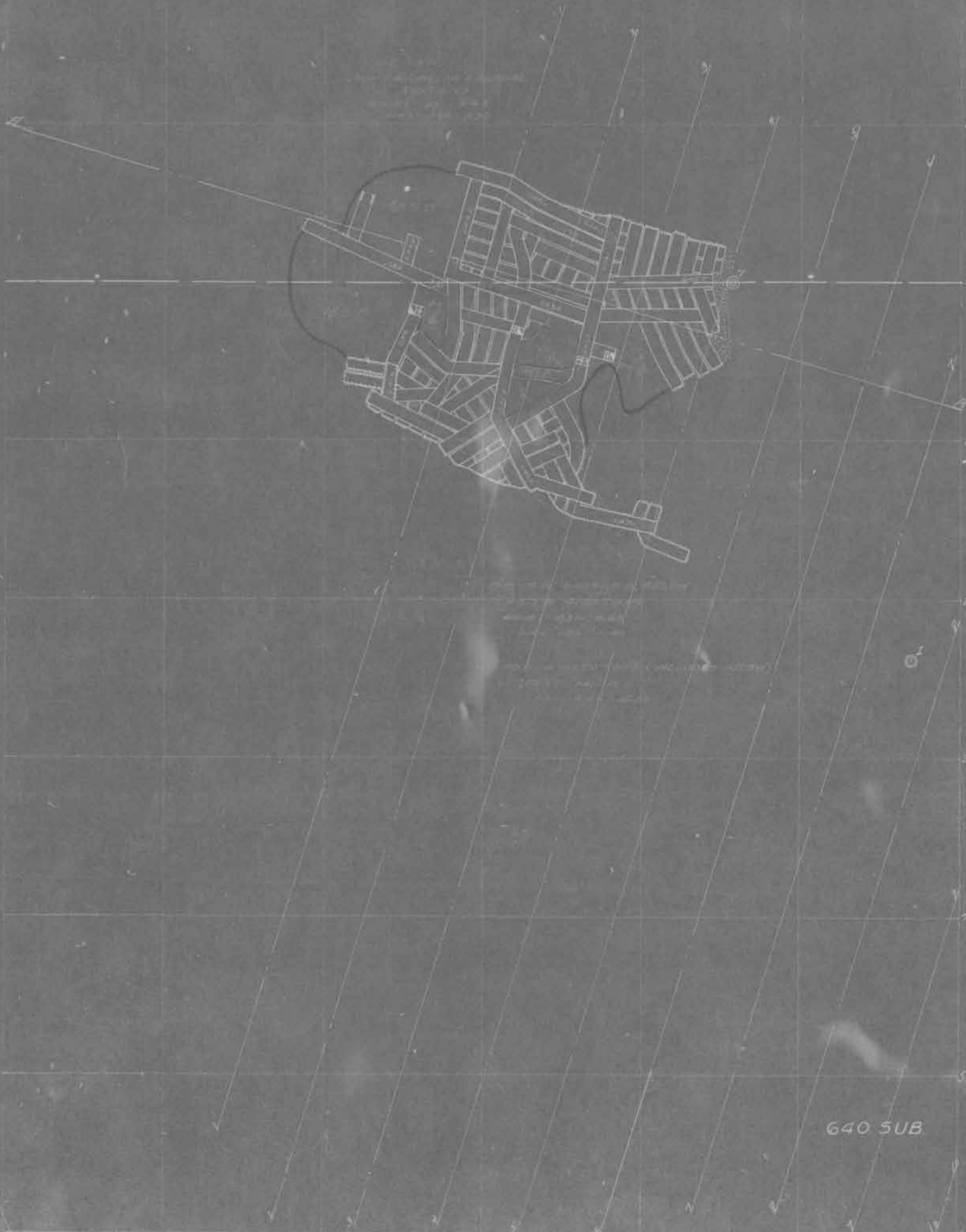
4136 Tons Fe 5277

3723
1000 Tons

3000 Tons

GENOA ANALYSIS MAP
690-650 SUB. JULY 1932

1-3



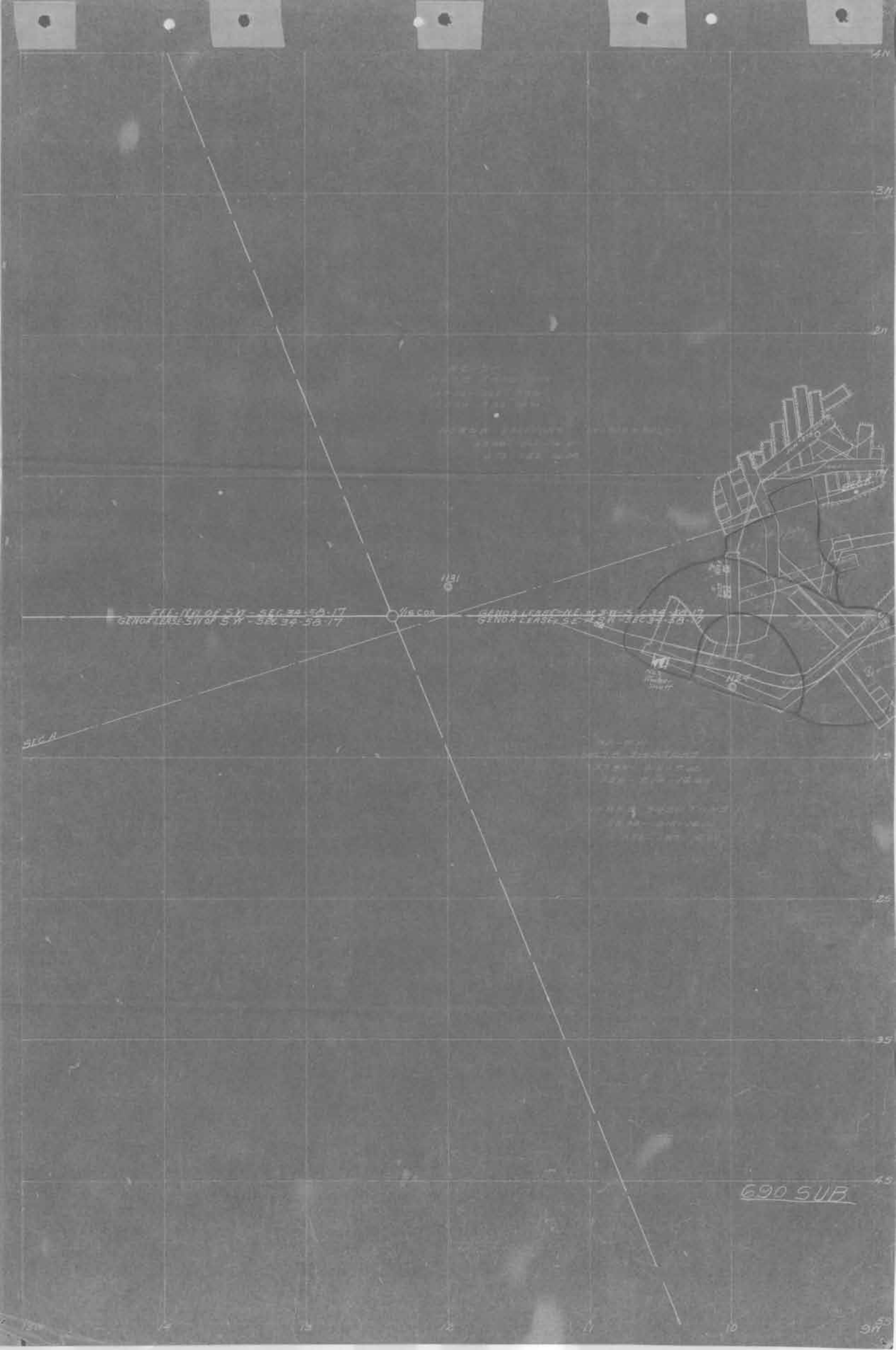
640 SUB

FILE #117 OF 511 - SEC 34-5A-17
GEN. LEASE SE 1/4 SW - 34-5B-17

GEN. LEASE NE 1/4 SW - 34-5B-17
GEN. LEASE SE 1/4 SW - 34-5B-17

SEC A

690 SUB





13 E & W 1/2 LING - SW 1/4 - SEC 34 50 17

GENOA LEASE
GENOA LEASE

690 SUB

BLOCK-1

SW

SW

2

1N

0

A

B

2

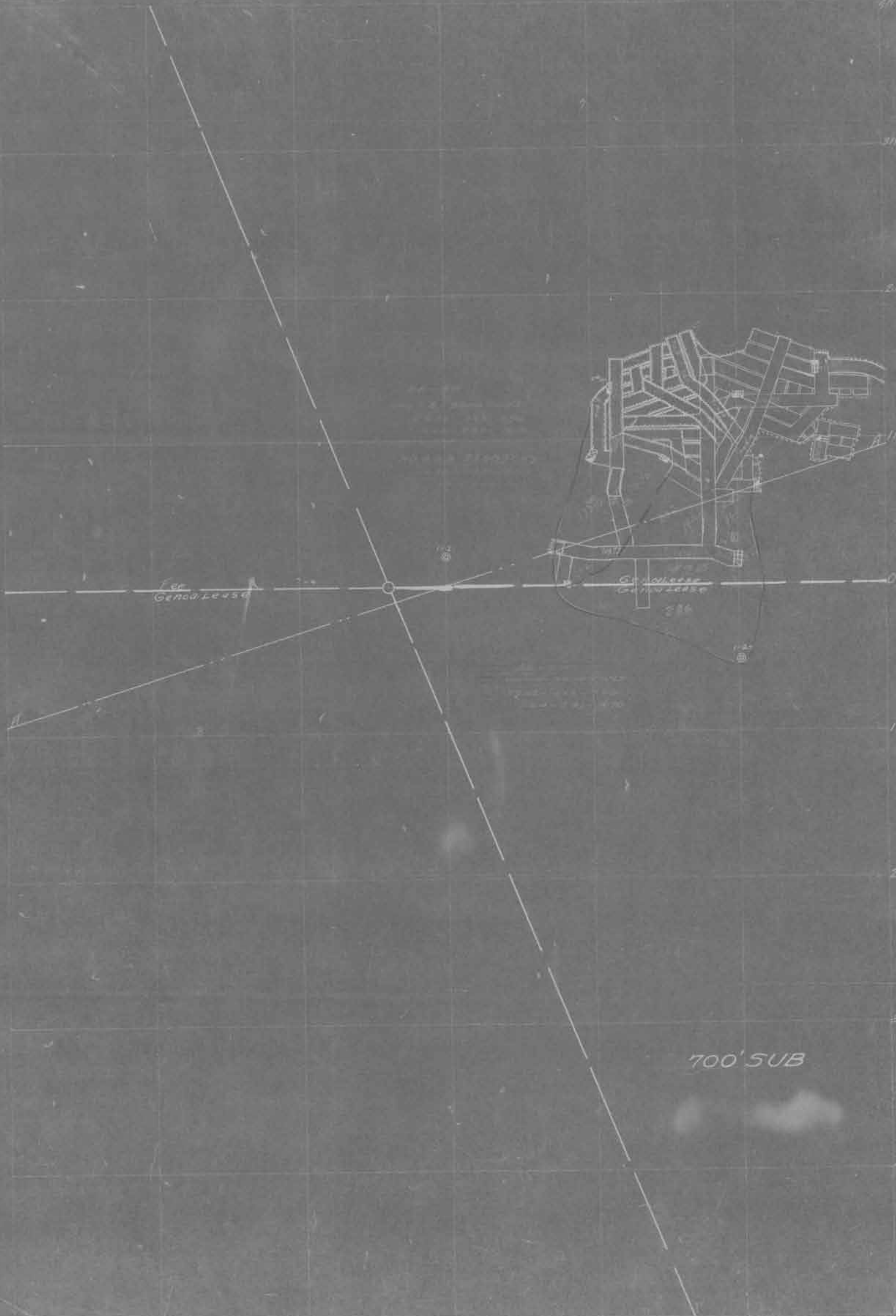
0

1

1

5

65



NOTE DISTANCE
1050' 174' 828'
246' 265' 1130'

FREE-N.W. of S.W. 34-34-17
LEASE-S.W. of S.W. 34-34-17

VINSON
GENERAL-NE of S.W. 34-34-17
LEASE-S.W. of S.W. 34-34-17

2ND SUB-LEVEL
710 LEVEL





120' SUB IN N.E. QTR
SECTION 36-38-17
SW-34-58-17
E 1/2 - SW-34-58-17

E1/2 NW of SW - SEC 34-58-17
GENOR LEASE SW of SW SEC 36-38-17

GENOR LEASE N.E. of SW SEC 34-58-17
GENOR LEASE SE SW SW - SEC 34-58-17

120' SUB IN S.W. QTR
SECTION 36-38-17
SW-34-58-17
E 1/2 - SW-34-58-17

120' SUB IN S.W. QTR
SECTION 36-38-17
SW-34-58-17
E 1/2 - SW-34-58-17

120' SUB

No. 27 SHRT

1131

1132

1133

1134

1135

1136

1137

1138

1139

1140

1141

1142

1143

1144

1145

1146

1147

1148

1149

1150

1151

1152

1153

1154

1155

1156

1157

1158

1159

1160



Handwritten notes in the upper left quadrant:
NW 1/4 SW
FEE
SEC 34-38-17
10-14-17
730' SUB
2017-11-14-17
10-14-17-17

FEE NW 1/4 SW SEC 34-38-17
GENOA LEASE SW 1/4 SW SEC 34-38-17

GENOA LEASE NE 1/4 SW SEC 34-38-17
SE 1/4 SW

McCo

730' SUB

Handwritten 'FB' inside a circle on the left side of the map.

Continued
10-14-17

New 730' SUB

10-14-17



750 LEVEL
(1ST LEVEL)

750 LEVEL
(1ST LEVEL)

750 LEVEL
(1ST LEVEL)

ELECTRICAL

MS

3W

E & W 116 LINE SW 1/4 SEC 34-56-17 GENDA LEASE
GENDA LEASE



760 SUB

BLOCK-1

E & W 115 LINE - SW 14 - SEC 34-68-17

GENOA LEASE
GENOA LEASE

770 SUB

BLOCK 1

24 W 23 22 21 20 19 18 17 16

SECA

FEE

NW OF SW- SEC. 34-58-17
SW OF SW- SEC. 34-58-17

GENOA LEASE
M.R.F.D.



1125

1105

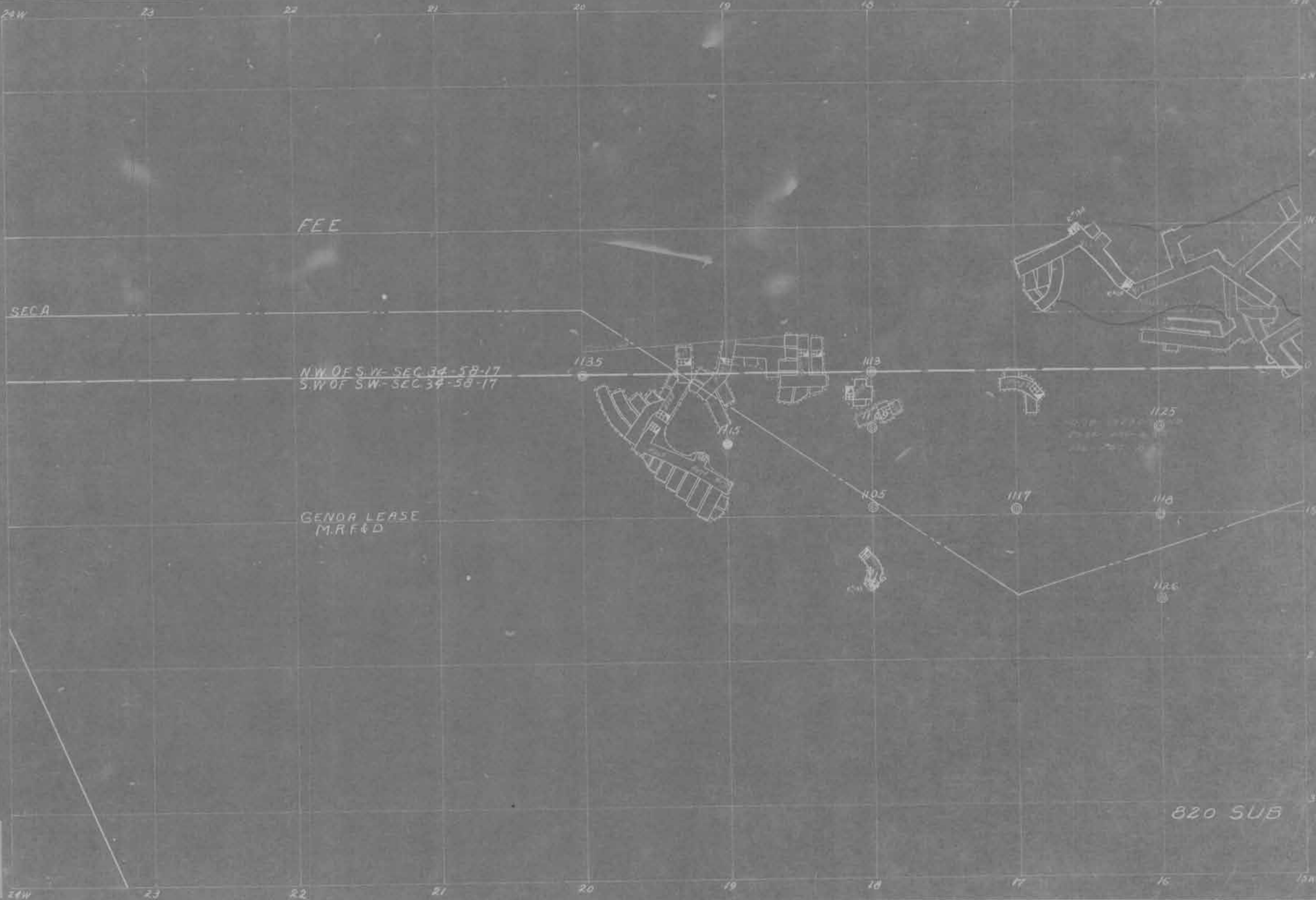
1117

1118

1126

810 SUB

24 W 23 22 21 20 19 18 17 16



FEE

SECA

N.W. OF S.W. SEC 34-58-17
S.W. OF S.W. SEC 34-58-17

GENDR LEASE
M.R.F&D

820 SUB

1135

1113

1145

1105

1117

1125

1118

1125

1114

MINN IRON CO
NW 1/4 OF SW

GENOR LEASE
MARKED
NE. 1/4 OF SW

TRAIL - FOLLOWED BY
ADJUTANT GENERAL

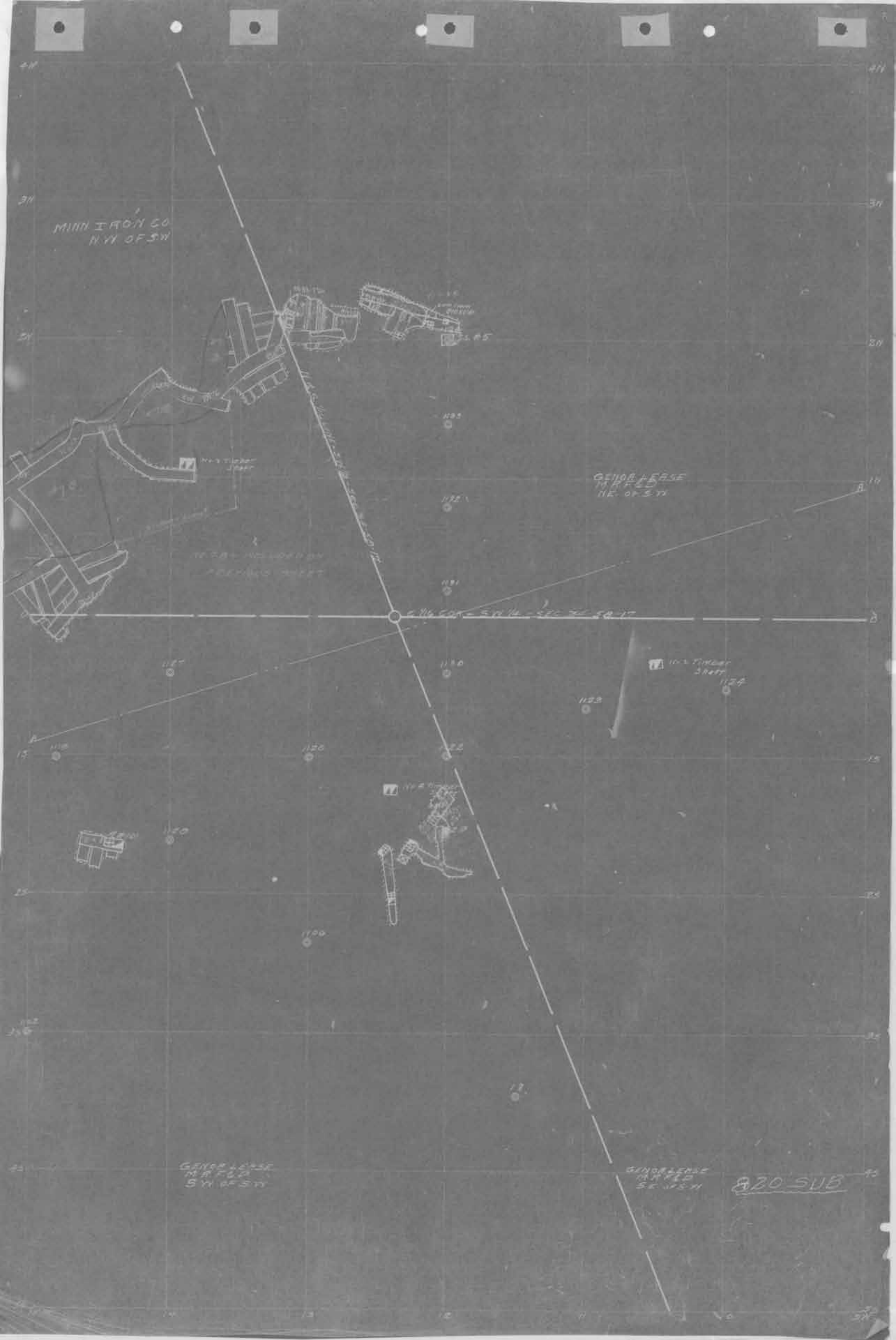
SEC 14 - SW 1/4 - SEC 24 - SW 1/4

10-3 TINDER
STAKE

GENOR LEASE
MARKED
SW 1/4 OF SW

GENOR LEASE
MARKED
SE 1/4 SW

820 SUB



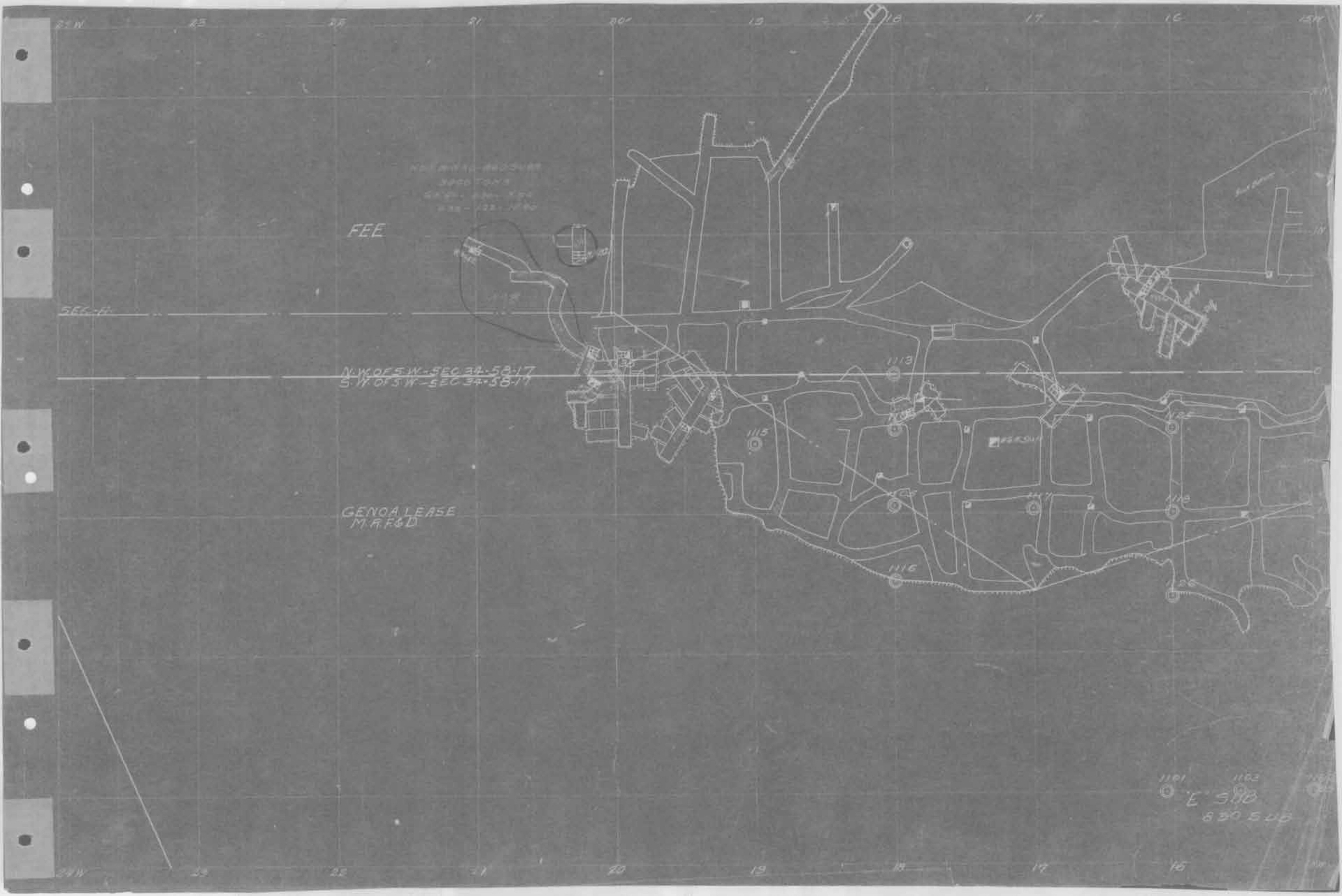
WELL AND 10-44251488
3900 TONS
4425-4426-104
238-422-1780

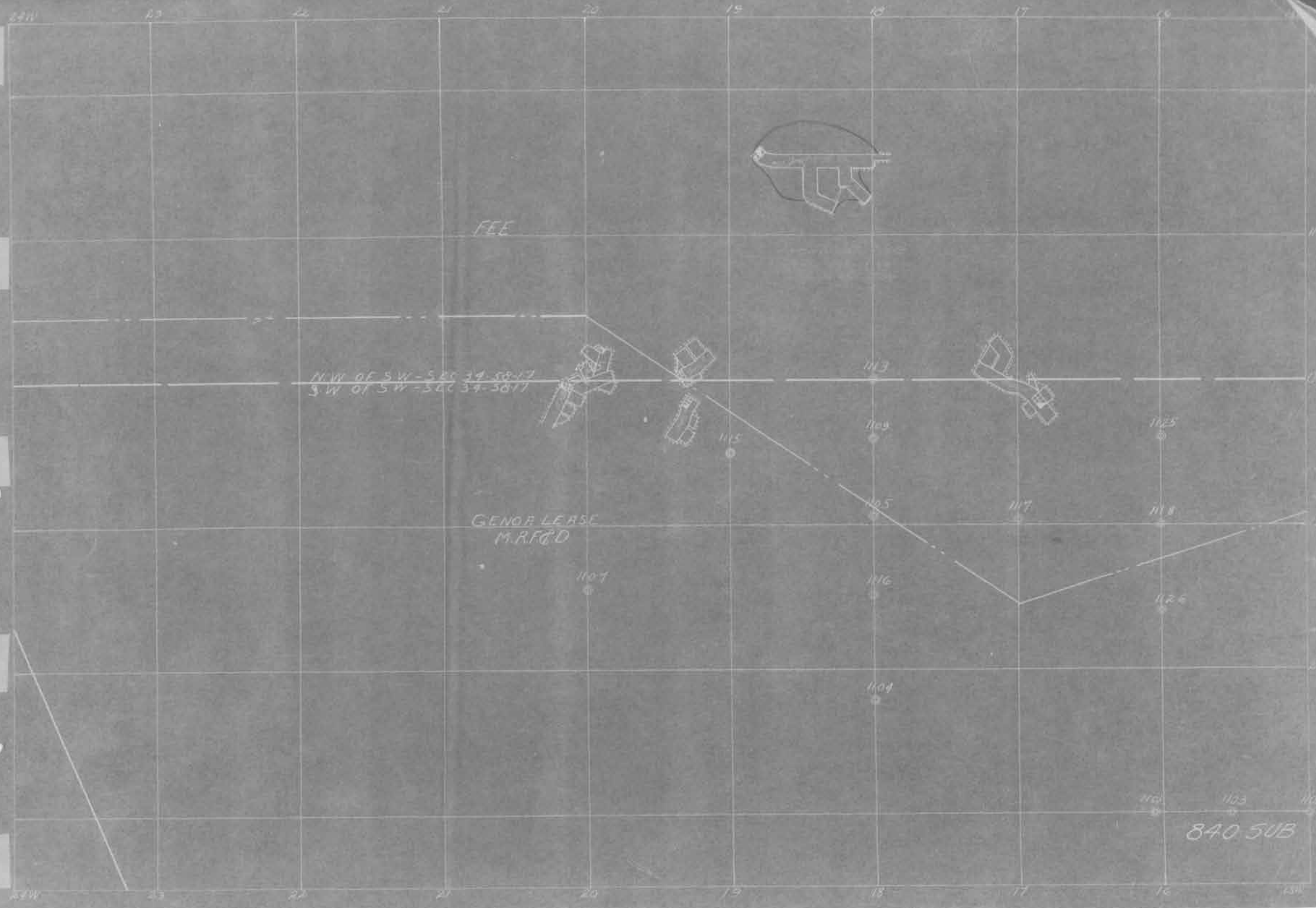
FEE

N.W. OF S.W. - SEC 34-58-17
S.W. OF S.W. - SEC 34-58-17

GENOA LEASE
M.R.F&D

1101 1102
E 5110
830 546





FEE

N.W. OF SW-SEC 34-58-17
S.W. OF SW-SEC 34-58-17

GENOR LEASE
M.R.F.C.D

840 SUB

1101

1115

1113

1109

1125

1125

1117

1118

1116

1126

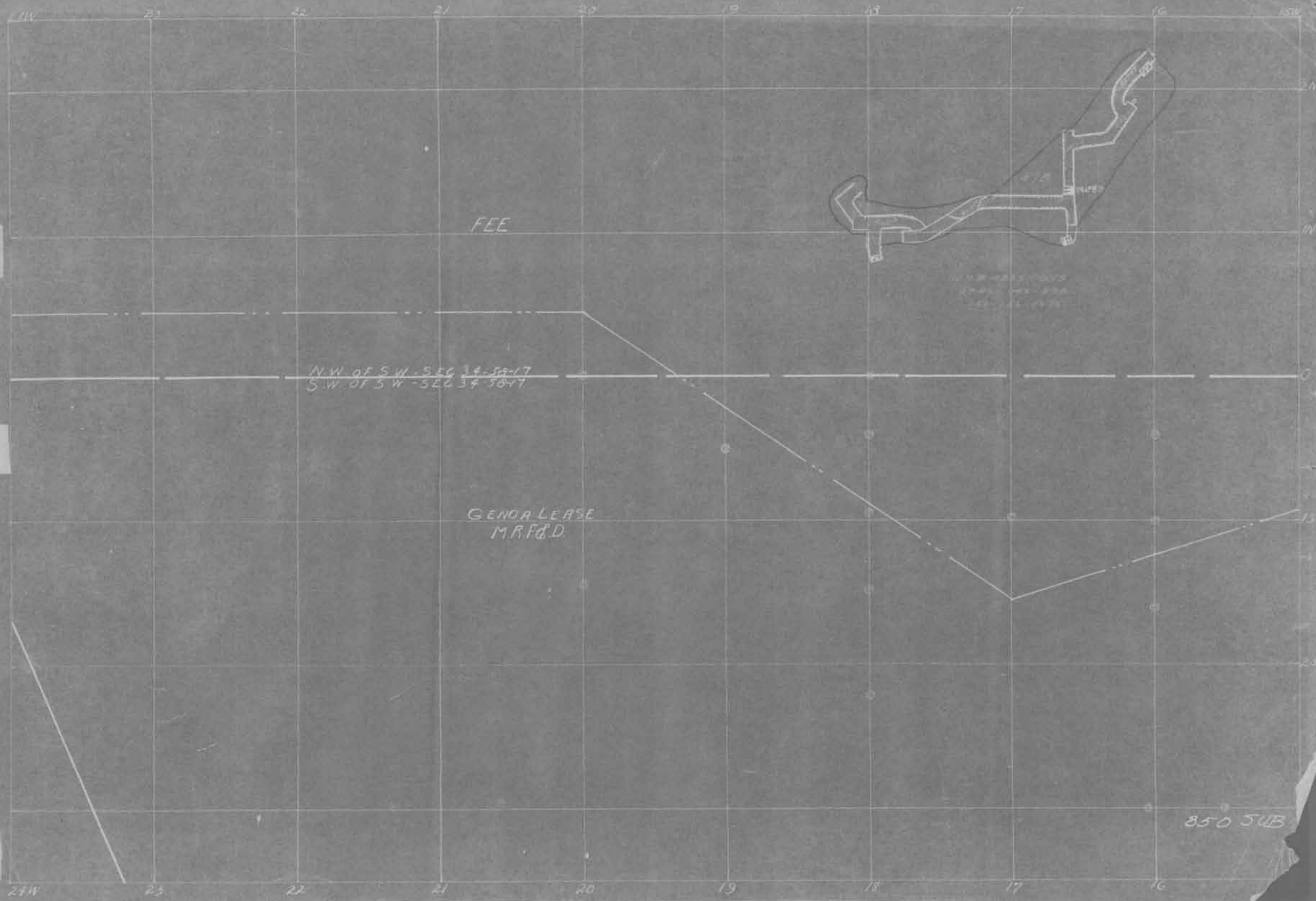
1104

1102

1103

1104

1105



FEE

N.W. of SW - SEC 34-5A-17
S.W. of SW - SEC 34-5B-17

GENOA LEASE
M.R.F.D.

850 54B



N.W. OF SW - SEC 20 - 32-17
S.W. OF SW - SEC 34 - 32-17

GENOA LEASE
M.H.F.D.

1135

1143

1115

1109

1105

1107

1105

1107

1108

1110

1125

1104

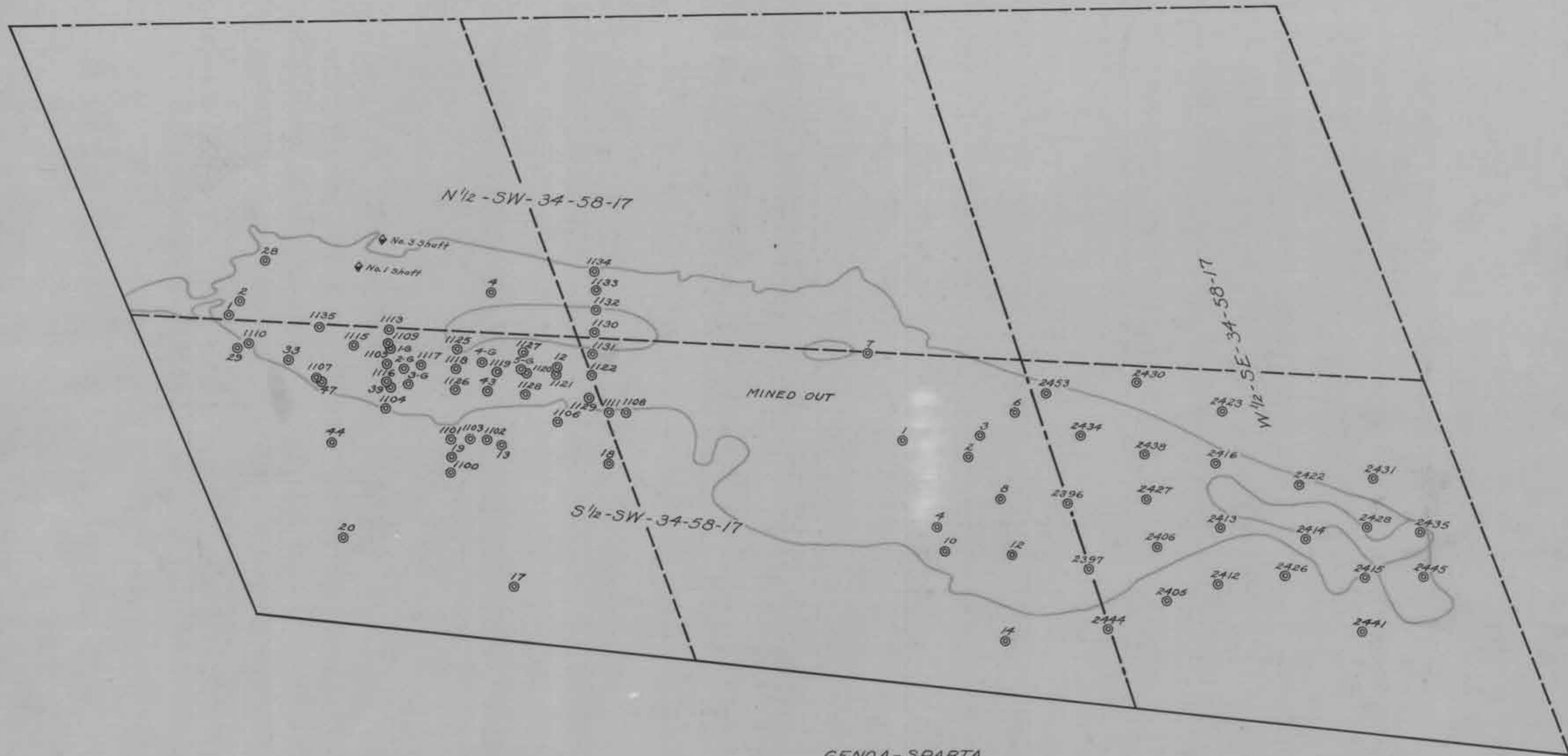
1101

1103

860 SUE



OLIVER IRON MINING CO.
MAP OF
GENOA-SPARTA TOWNSITE
MINE & VICINITY
EVELETH DISTRICT
SCALE
LAKE SUPERIOR DATUM
ENGINEERING BY
EVELETH, MINN.
JANUARY 24, 1924
R. C. DENNIS



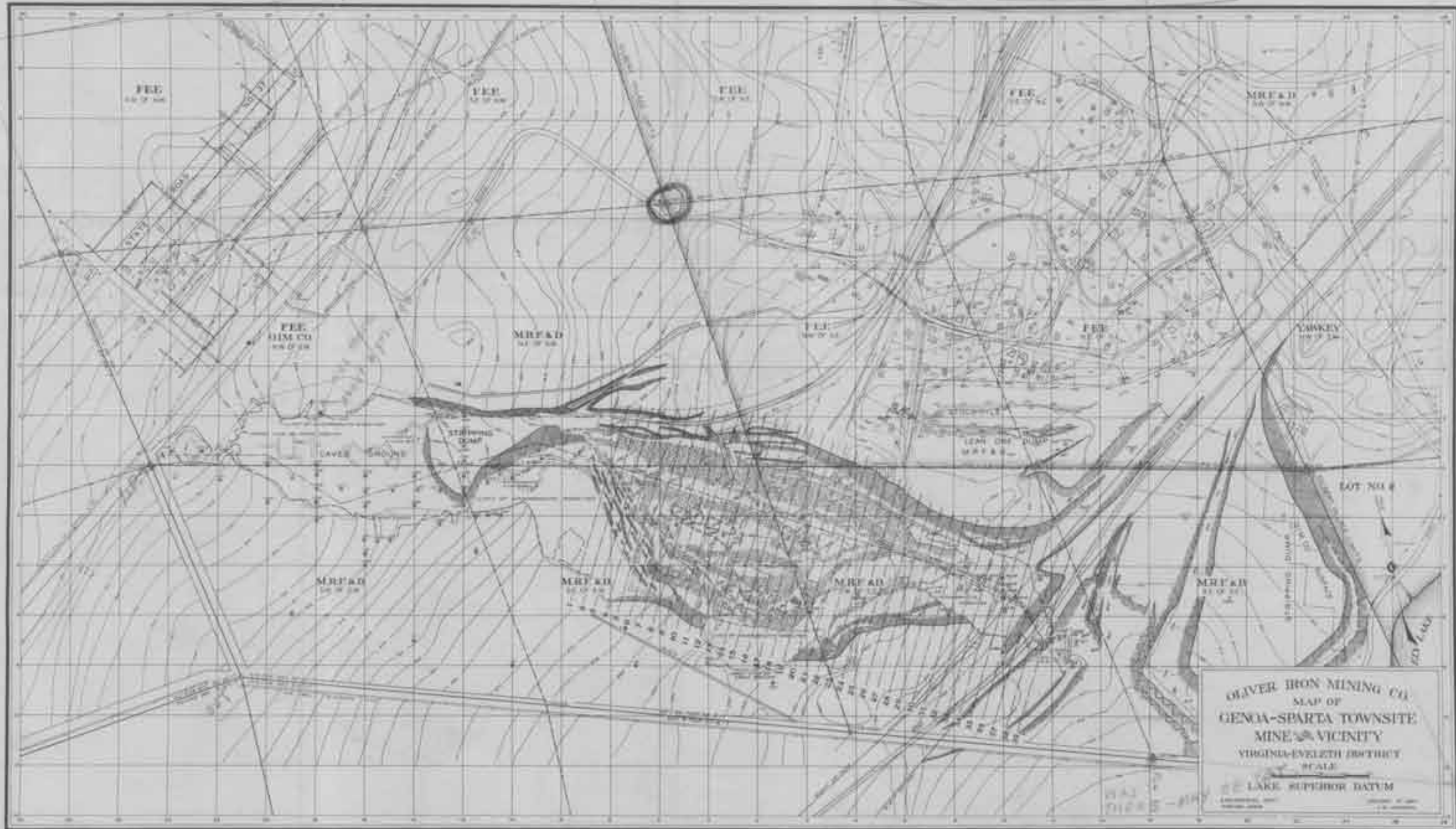
GENOA-SPARTA

Scale 1" = 200'
 Map No. 615
 March 31-1920
 Revised Sept. 14-1925

B.M. E. 1.
838.72

24195

Iron Pipe on
N. Side Road (S)



o = B.C.

Also had 2 Iron Piles on So. Line
of SE-SE Near Lake



E.W. COONS CO. INC.
MAP OF
**GENOA-SPARTA MINE
AND VICINITY**
SCALE

