

MINNESOTA DEPARTMENT OF NATURAL RESOURCES BWCAW MINERALS MANAGEMENT CORRIDOR

Map by the Minnesota Department of Natural Resources
Division of Lands and Minerals
February 2015



BWCAW Minerals Management Corridor

Policy Statement:
The Commissioner of Natural Resources, with the approval of the State Executive Council, has the authority to lease state-owned mineral rights for exploration and development of mineral resources. State lands within the Boundary Waters Canoe Area Wilderness (BWCAW) are prohibited by law for use in commercial activities or artificial development. In recognition of the BWCAW as a unique area of surpassing scenic beauty and solitude, the Department of Natural Resources has established procedures so that certain state lands in the proximity to the BWCAW are not offered for mineral leasing.

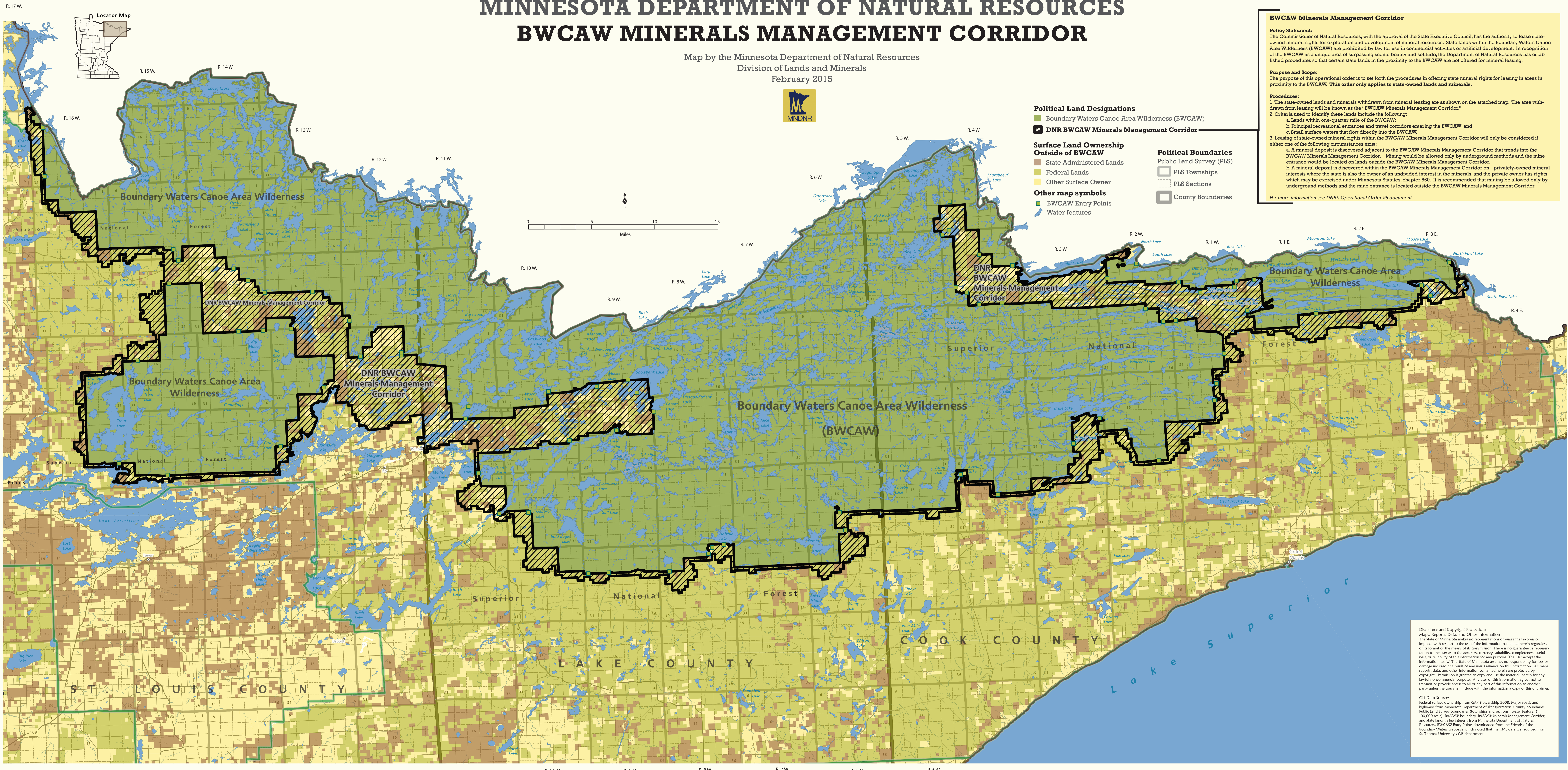
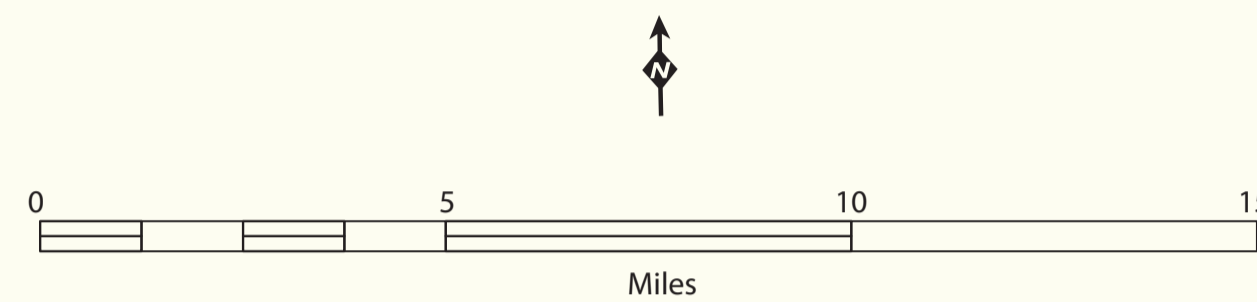
Purpose and Scope:
The purpose of this operational order is to set forth the procedures in offering state mineral rights for leasing in areas in proximity to the BWCAW. **This order only applies to state-owned lands and minerals.**

Procedures:

- The state-owned lands and minerals withdrawn from mineral leasing are as shown on the attached map. The area withdrawn from leasing will be known as the "BWCAW Minerals Management Corridor."
- Criteria used to identify these lands include the following:
 - Lands within one-quarter mile of the BWCAW;
 - Principal recreational entrances and travel corridors entering the BWCAW; and
 - Small surface waters that flow directly into the BWCAW.
- Leasing of state-owned mineral rights within the BWCAW Minerals Management Corridor will only be considered if either one of the following circumstances exist:
 - A mineral deposit is discovered adjacent to the BWCAW Minerals Management Corridor that trends into the BWCAW Minerals Management Corridor. Mining would be allowed only by underground methods and the mine entrance would be located on lands outside the BWCAW Minerals Management Corridor.
 - A mineral deposit is discovered within the BWCAW Minerals Management Corridor on privately-owned mineral interests where the state is also the owner of an undivided interest in the minerals, and the private owner has rights which may be exercised under Minnesota Statutes, chapter 560. It is recommended that mining be allowed only by underground methods and the mine entrance is located outside the BWCAW Minerals Management Corridor.

For more information see DNR's Operational Order 95 document

- Political Land Designations**
- Boundary Waters Canoe Area Wilderness (BWCAW)
 - DNR BWCAW Minerals Management Corridor**
- Surface Land Ownership Outside of BWCAW**
- State Administered Lands
 - Federal Lands
 - Other Surface Owner
- Other map symbols**
- BWCAW Entry Points
 - Water features
- Political Boundaries**
- Public Land Survey (PLS)
- PLS Townships
 - PLS Sections
 - County Boundaries



Disclaimer and Copyright Protection:
Maps, Reports, Data, and Other Information
The State of Minnesota makes no representations or warranties express or implied, with respect to the use of the information contained herein regardless of its format or the means of its transmission. There is no guarantee or representation to the user as to the accuracy, currency, suitability, completeness, usefulness, or reliability of this information for any purpose. The user accepts the information "as is." The State of Minnesota assumes no responsibility for loss or damage incurred as a result of any user's reliance on this information. All maps, reports, data, and other information contained herein are protected by copyright. Permission is granted to copy and use the materials herein for any lawful noncommercial purpose. Any user of this information agrees not to transmit or provide access to all or any part of this information to another party unless the user shall include with the information a copy of this disclaimer.

GIS Data Sources:
Federal surface ownership from CAP Stewardship 2008. Major roads and highways from Minnesota Department of Transportation. County boundaries, Public Land Survey boundaries (townships and sections), water features (1:100,000 scale), BWCAW boundary, BWCAW Minerals Management Corridor, and State lands in fee interests from Minnesota Department of Natural Resources. BWCAW Entry Points downloaded from the Friends of the Boundary Waters webpage which noted that the KML data was sourced from St. Thomas University's GIS department.