



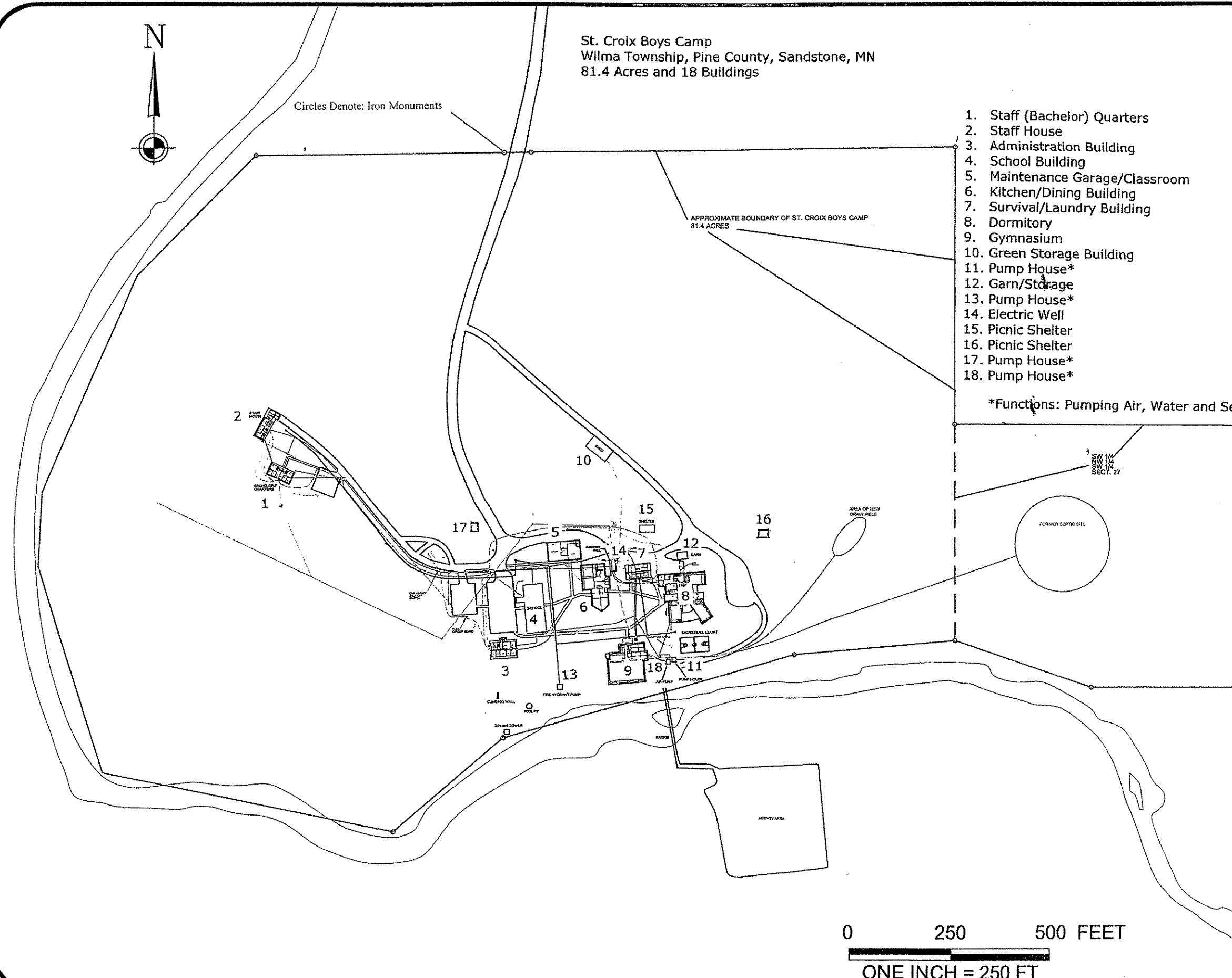
St. Croix Boys Camp  
 Wilma Township, Pine County, Sandstone, MN  
 81.4 Acres and 18 Buildings

Circles Denote: Iron Monuments

APPROXIMATE BOUNDARY OF ST. CROIX BOYS CAMP  
 81.4 ACRES

1. Staff (Bachelor) Quarters
2. Staff House
3. Administration Building
4. School Building
5. Maintenance Garage/Classroom
6. Kitchen/Dining Building
7. Survival/Laundry Building
8. Dormitory
9. Gymnasium
10. Green Storage Building
11. Pump House\*
12. Barn/Storage
13. Pump House\*
14. Electric Well
15. Picnic Shelter
16. Picnic Shelter
17. Pump House\*
18. Pump House\*

\*Functions: Pumping Air, Water and Sewage



Project Notes

### LEGEND

- LIGHT POLE
- POWER POLE
- ⊕ ELECTRICAL OUTLET
- ⊗ WATER FAUCET
- ⊘ PHONE PEDISTAL
- MANHOLE
- LP TANK
- ⊕ FIRE HYDRANT
- SEWER
- ELECTRIC (OVERHD)
- - - ELECTRIC (UNGRND)
- WATER
- WATER-FIRE HYDRANTS
- GAS
- PHONE
- 10' CONTOUR LINES
- ROADS
- SHORELINE
- PROPERTY

| No. | Revision/Issue | Date |
|-----|----------------|------|
|     |                |      |

## MAIER

Engineering, Inc.  
 2115 Upper 55th Street East  
 Inver Grove Heights, MN 55077  
 www.maier-eng.com

THIS MAP IS FOR DESIGN PURPOSES ONLY. EVERY ATTEMPT HAS BEEN MADE TO ENSURE THE MAP'S ACCURACY. THE ENGINEERING FIRM CAN NOT BE HELD RESPONSIBLE FOR ANY ERRORS OR OMISSIONS IN THE MAP THAT MAY CAUSE ANY SORT OF DAMAGE, HARM OR EXPENSE. CUSTOMER MUST CALL SYSTEM MUST BE NOTIFIED BEFORE DIGGING. © 1-954-454-0002

Designed by:  
 Drawn by: **J. BRUMMEL**  
 Approved by: **M. GABRIEL**  
 For: **STCROIXBOYS**

Project Name and Address:  
**ST. CROIX BOYS CAMP**  
**SANDSTONE, MN**

|                            |                 |
|----------------------------|-----------------|
| Project: <b>ST. C BOYS</b> | Sheet: <b>2</b> |
| Date: <b>5/2001</b>        |                 |
| Scale: <b>1:250</b>        |                 |