



Minnesota Department of Natural Resources (DNR)

Minerals Exploration Plan on State Nonferrous Metallic Minerals Leases

Vermillion Gold

Exploration Plan Submitted on 11/17/2015

DNR Summary Report and Associated Maps

The exploration plan was submitted by Vermillion Gold on November 17th, 2015 and summarized here by the DNR on November 17th, 2015. The locations of proposed exploration activities by this state nonferrous metallic minerals lessee are shown in a standard format and legend. Report and associated maps by Minnesota DNR, Lands and Minerals Division.

This report and associated maps are posted on the DNR's exploration plan website at:
http://www.dnr.state.mn.us/lands_minerals/metallic_nf/regulations.html

This summary report and associated maps should be distributed as a complete document due to the relative nature of the content.

Minerals Exploration Plan on State Nonferrous Metallic Mineral Leases

Vermillion Gold Exploration Plan Summarized by DNR November 17th, 2015

Narrative: Vermillion Gold (Explorer) has proposed drilling 1 drill hole (exploratory boring) over 1 state non-ferrous metallic minerals lease in St. Louis County, Minnesota near the city of Virginia. The explorer will need to extend an existing trail approximately 75 feet to access the one exploratory boring site.

State Minerals Lease Numbers: MM-10185

Public Land Survey Location: Section 22, Township 58 North, Range 17 West
St. Louis County, Minnesota

Types of exploration activity: Exploratory boring and trail building

Expected time period of activity: Beginning in November 2015

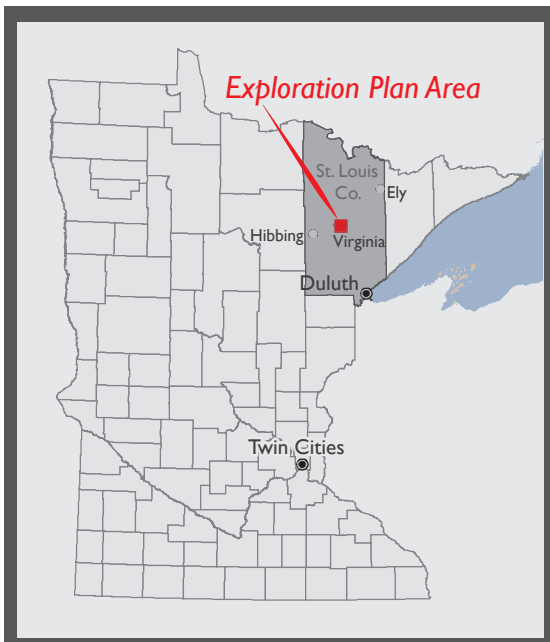
Plans to access exploration sites: The explorer will need to extend an existing trail approximately 75 feet to access the one exploratory boring site.

Surface Ownership: The explorer is working on access agreements with the commercial property surface owners in Section 22 and will not do exploration work until agreements are in effect there.

Explorer contact: Jim Kiehne, Vermillion Gold, (612) 338-5584

End report section
Start maps section

Locator map for exploration plan activity



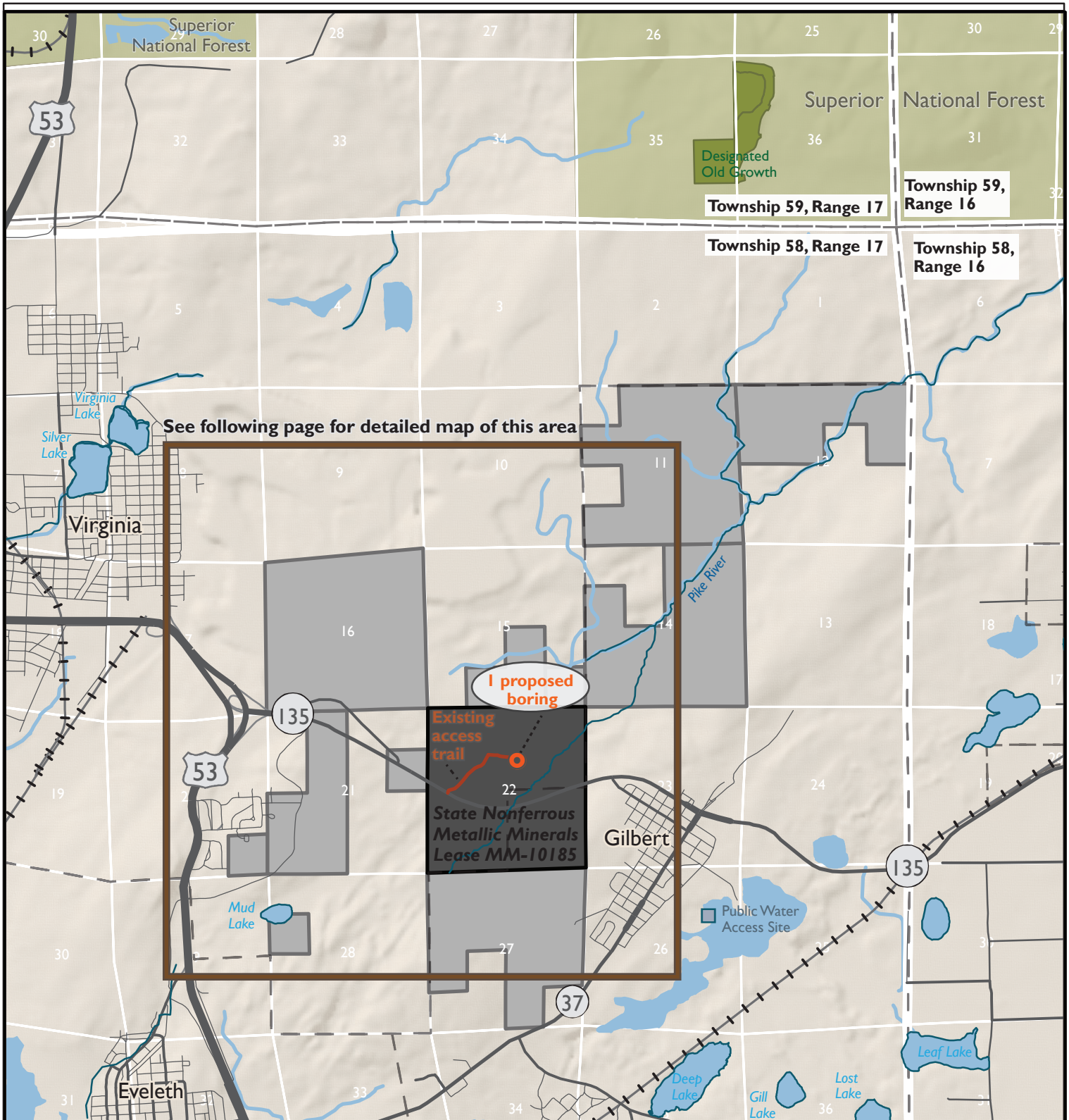
Exploration Plan Area

This small scale map displays the general location of the exploration plan relative to other cities in northern Minnesota. The following two maps provide more details on the exploration area including general locations of the drill hole, access trail, active state mineral leases, public land survey locations, cities, water bodies, special features, and excluded lands.

See following pages 3 and 4 for detailed maps

Maps and Data Disclaimer

The State of Minnesota makes no representations or warranties express or implied, with respect to the use of the information contained herein regardless of its format or the means of its transmission. There is no guarantee or representation to the user as to the accuracy, currency, suitability, completeness, usefulness, or reliability of this information for any purpose. The user accepts the information "as is." The State of Minnesota assumes no responsibility for loss or damage incurred as a result of any user's reliance on this information. All maps, reports, data, and other information contained herein are protected by copyright. Permission is granted to copy and use the materials herein for any lawful noncommercial purpose. Any user of this information agrees not to transmit or provide access to all or any part of this information to another party unless the user shall include with the information a copy of this disclaimer.



DNR Summary Overview Map of Exploration Plan Submitted by Vermillion Gold on November 17, 2015

Narrative: Vermillion Gold (Explorer) has proposed drilling 1 drill hole (exploratory boring) over 1 state nonferrous metallic minerals lease (MM-10185) in St. Louis County, Minnesota near the city of Virginia in Section 22, Township 58 North, Range 17 West. The drilling is anticipated to begin in November of 2015.

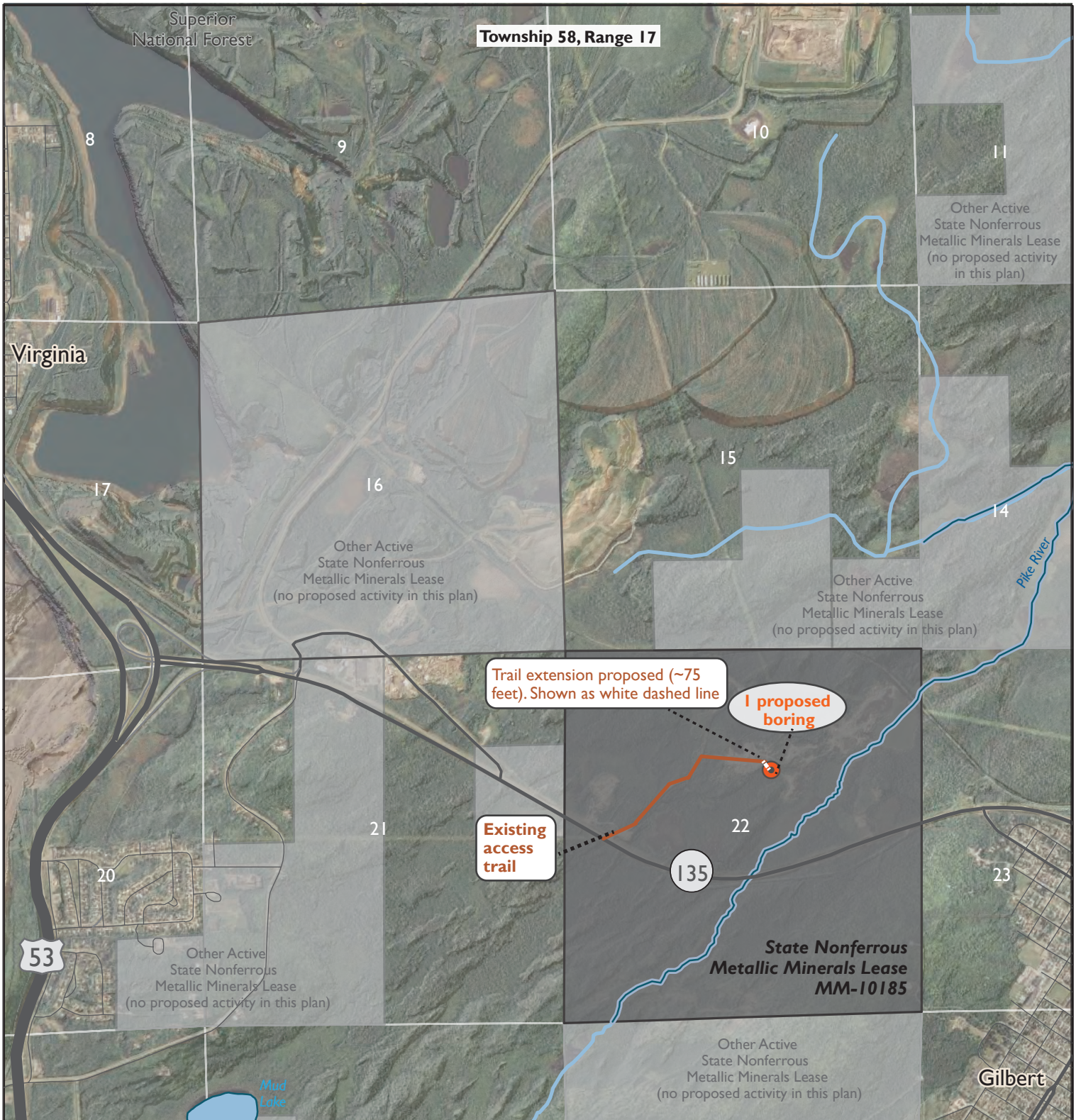
Plans to access exploration site: The explorer will need to extend an existing trail approximately 75 feet to access the one exploratory boring site.

Surface Ownership: The explorer is working on access agreements with the commercial property surface owners in Section 22 and will not do exploration work until agreements are in effect there.

- Proposed exploratory boring site
- Existing access trail
- Proposed trail extension not shown due to map scale, see following page.
- Active state minerals lease with proposed exploration activity in this plan. Lease identification numbers labeled on the map (ex. MM-10185).
- Active state leases with no proposed exploration activity in this plan.
- The beds of significant rivers and water bodies in DNR's Public Waters Inventory are excluded from exploration activity (ex. Pike River)
- Designated Old Growth Stands are Special Features
- Public Water Access Sites are Special Features

Natural Heritage Features and Historic & Archaeologic Sites are not shown because they are non-public data.





DNR Summary Overview Map of Exploration Plan Submitted by Vermillion Gold on November 17, 2015

Narrative: Vermillion Gold (Explorer) has proposed drilling 1 drill hole (exploratory boring) over 1 state nonferrous metallic minerals lease (MM-10185) in St. Louis County, Minnesota near the city of Virginia in Section 22, Township 58 North, Range 17 West. The drilling is anticipated to begin in November of 2015.

Plans to access exploration site: The explorer will need to extend an existing trail approximately 75 feet to access the one exploratory boring site.

Surface Ownership: The explorer is working on access agreements with the commercial property surface owners in Section 22 and will not do exploration work until agreements are in effect there.

- Proposed exploratory boring site
- Existing access trail to exploratory boring site.
- Proposed access trail extension (~75 feet)
- Active state minerals lease with proposed exploration activity in this plan. Lease identification numbers labeled on the map (ex. MM-10185).
- Active state leases with no proposed exploration activity in this plan.
- The beds of significant rivers and water bodies in DNR's Public Waters Inventory are excluded from exploration activity (ex. Pike River)

Natural Heritage Features and Historic & Archaeologic Sites are not shown because they are non-public data. Basemaps imagery from NAIP Air Photos 2013 and LIDAR shaded relief from DNR.

