



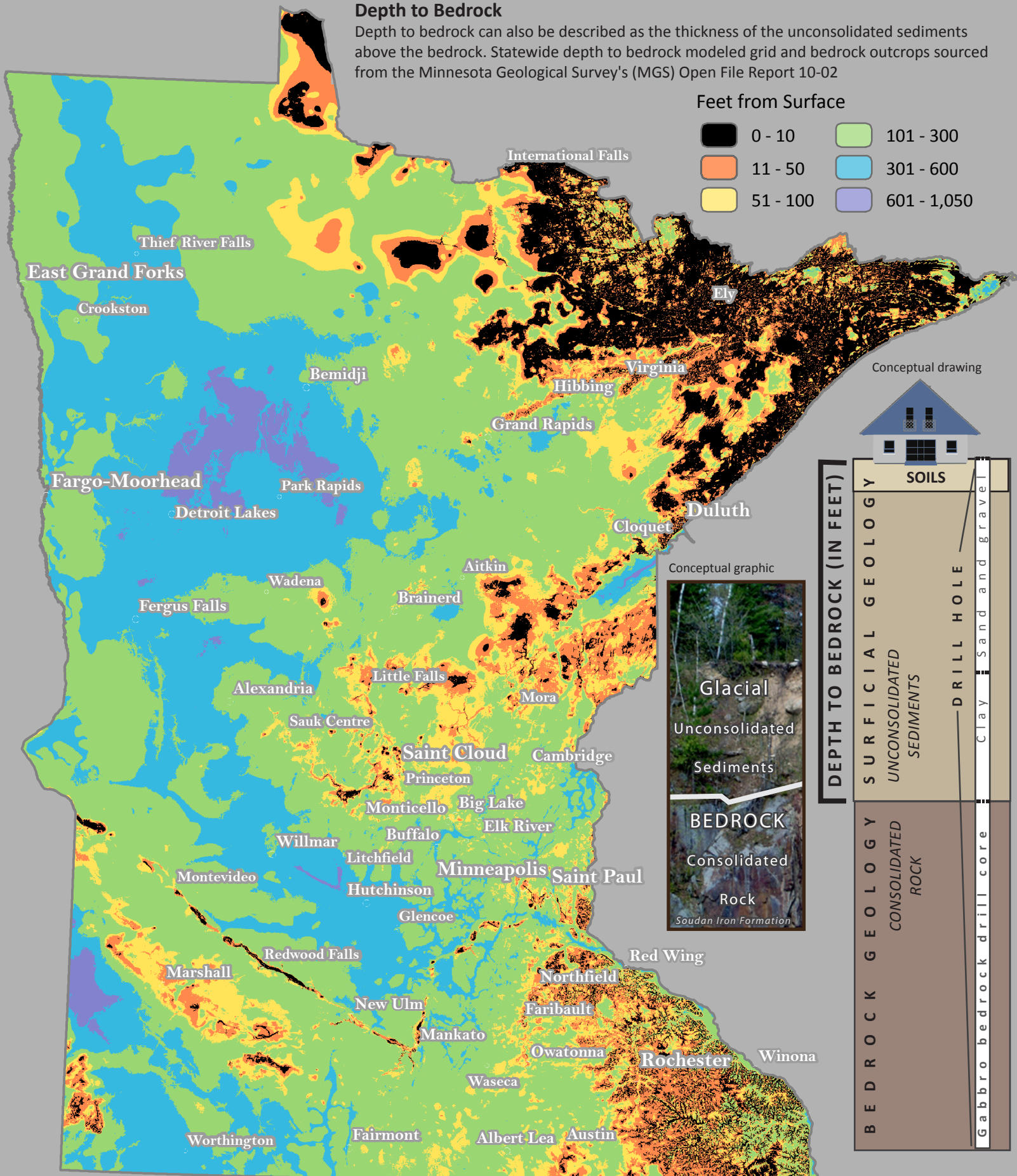
DEPTH TO BEDROCK IN MINNESOTA

Data from Minnesota Geological Survey

Depth to Bedrock

Depth to bedrock can also be described as the thickness of the unconsolidated sediments above the bedrock. Statewide depth to bedrock modeled grid and bedrock outcrops sourced from the Minnesota Geological Survey's (MGS) Open File Report 10-02

Feet from Surface



Conceptual drawing



SOILS

DEPTH TO BEDROCK (IN FEET)

SURFICIAL GEOLOGY

UNCONSOLIDATED SEDIMENTS

DRILL HOLE

Sand and Gravel

Clay

BED ROCK GEOLOGY

CONSOLIDATED ROCK

Gabbro bedrock drill core

Conceptual graphic

