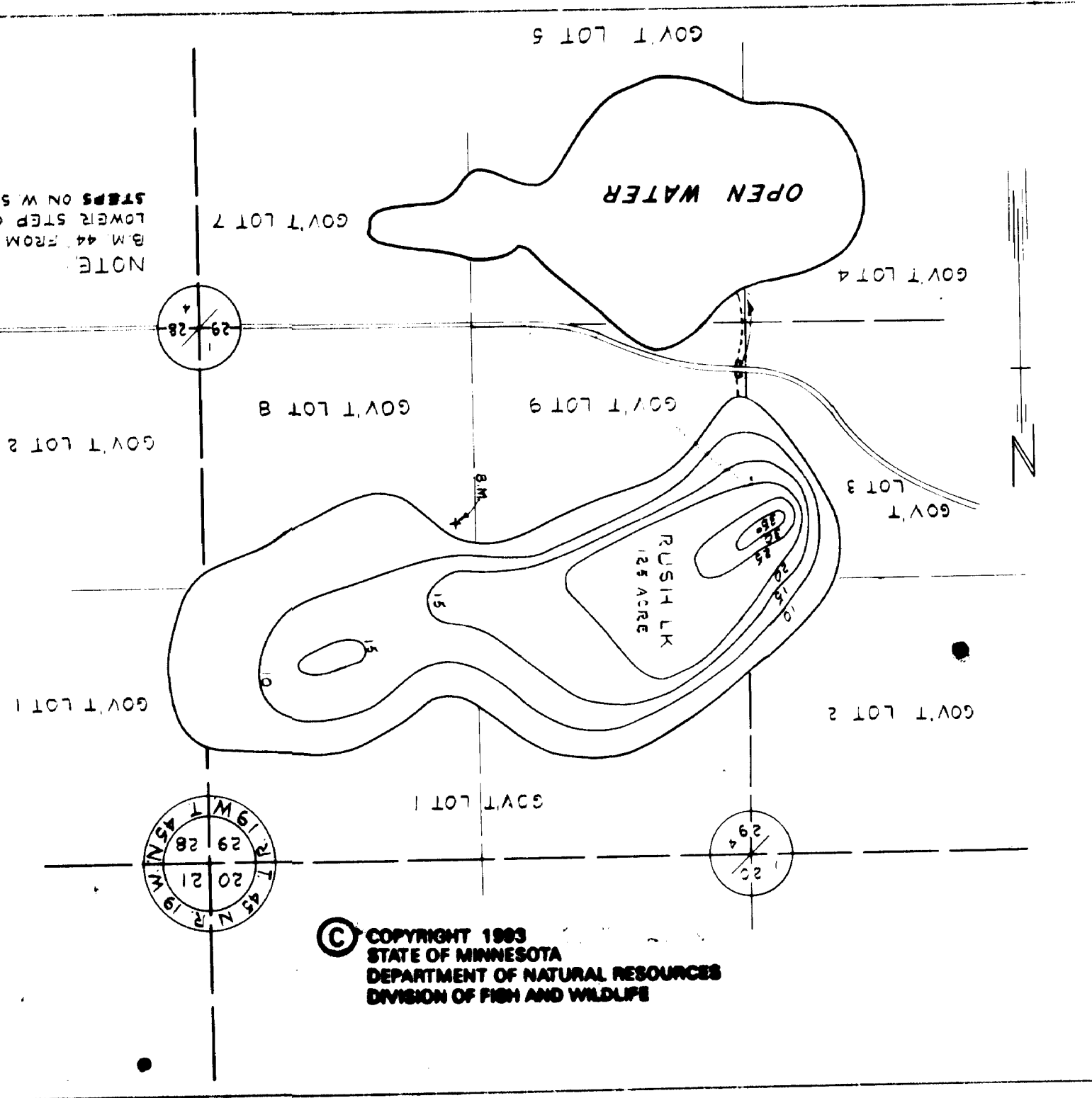
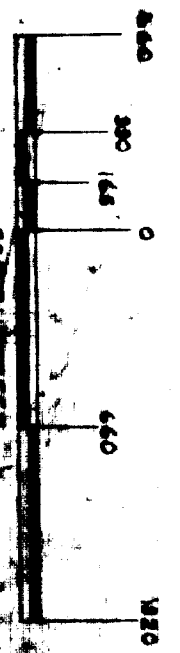


D172



NOTE:  
B.M. 44 FROM TOP OF  
LOWER STEP OF CABIN.  
STEPS ON W SIDE OF CABIN.



MINNESOTA CONSERVATION DEPARTMENT  
DIVISION OF GAME & FISH  
**RUSH LAKE 58-78**  
PINE COUNTY  
SEC. 29 T. 48 N. R. 15 W. 4 TH. PM.  
DEWAIN L.S. SURVEY L.S.  
8-1-49

Minnesota's Statewide  
Department of Natural Resources  
Parks and Recreational Resources  
P.O. Box 1000, St. Paul, MN 55101  
Toll-free: 1-800-657-3887  
Fax: 612/296-4888 or our  
Internet site: www.dnr.state.mn.us  
1-800-657-3887

