

LAKE MAUD
3-500

R. 42 W.

S. A. R. 9

22

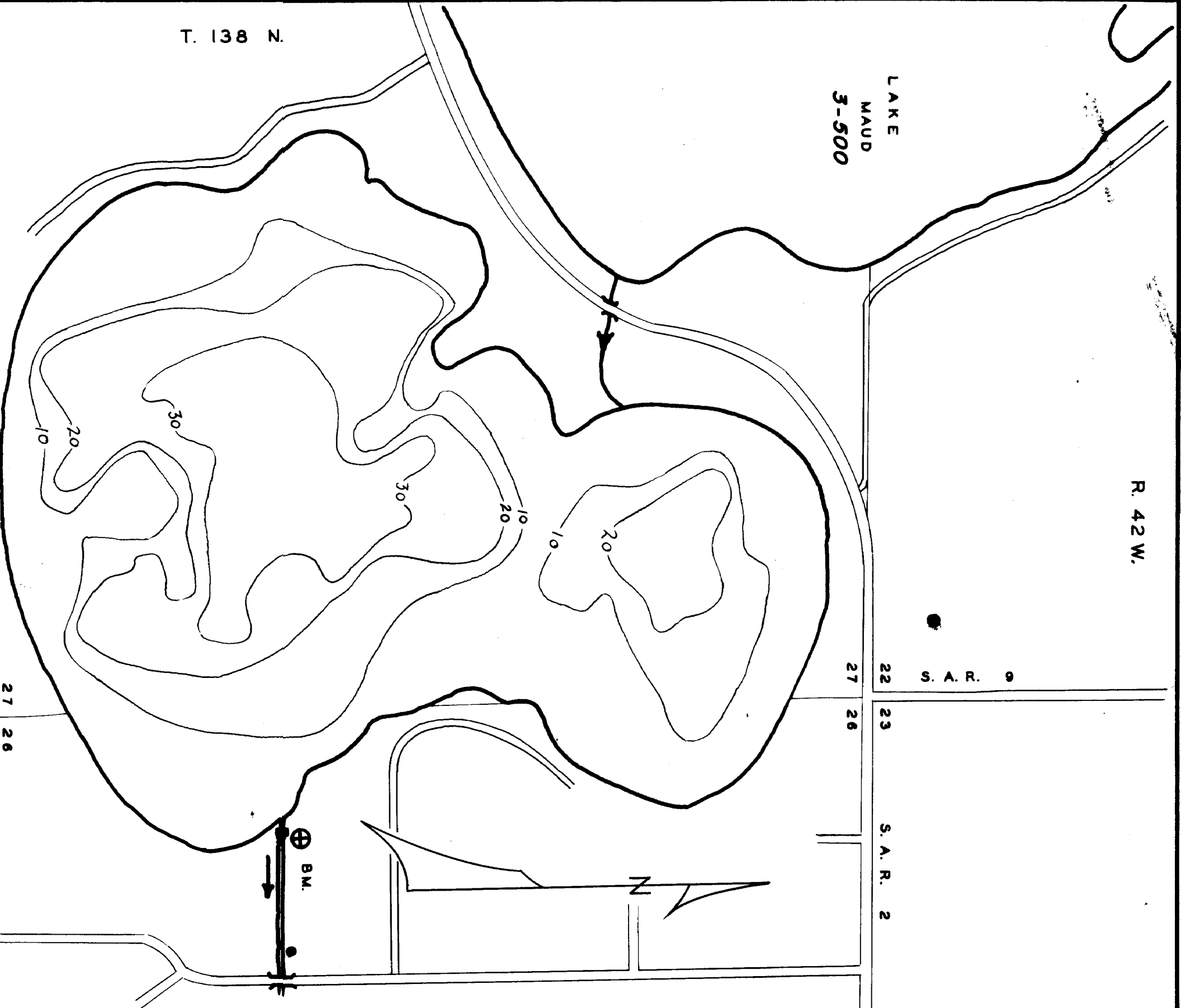
23

S. A. R. 2

27

26

T. 138 N.



B.M. W.P.A. DAM AT OUTLET
WATER GAUGE READING 2.25
7/10/53



Minnesota's Secretary
 Part of the Department of Administration
 Public Communications Division
 To order informational copies of
 Current Lake Reports call
 612/297-3888 or our
 nationwide toll-free number
 1-800-657-5787

© State of Minnesota 1984



SCALE IN FEET
THIS PRINT MANIFESTS BY
DEPARTMENT OF CONSERVATION
MINNESOTA AND RESPONDS TO
THE REQUEST OF THE PUBLIC
CHANGES OR ADDITIONS MAY
REPRODUCED FROM THESE

REVISED
12-8-67
BY D.B.B.

OUTLINE THREE FROM 1959 P.M.A. PHOTO

DDW - 370 ACRES

27	26
34	35

© COPYRIGHT 1993
STATE OF MINNESOTA
DEPARTMENT OF NATURAL RESOURCES
DIVISION OF FISH AND WILDLIFE

STATE OF MINNESOTA
 DEPARTMENT OF CONSERVATION
 CHESTER S. WILSON - COMMISSIONER
 DIVISION OF GAME AND FISH
 BUREAU OF FISHERIES

EUNICE LAKE 3-503
 BECKER COUNTY

FIELDWORK AND BASE MAP BY
 H. K. DATE 7/10/53
 DRAWN BY J.M. DATE 5/11/54
 FISHERIES RESEARCH UNIT

D.D.W.
FILE NO. **D-016**

© State of Minnesota 1984

D-0016

D-16