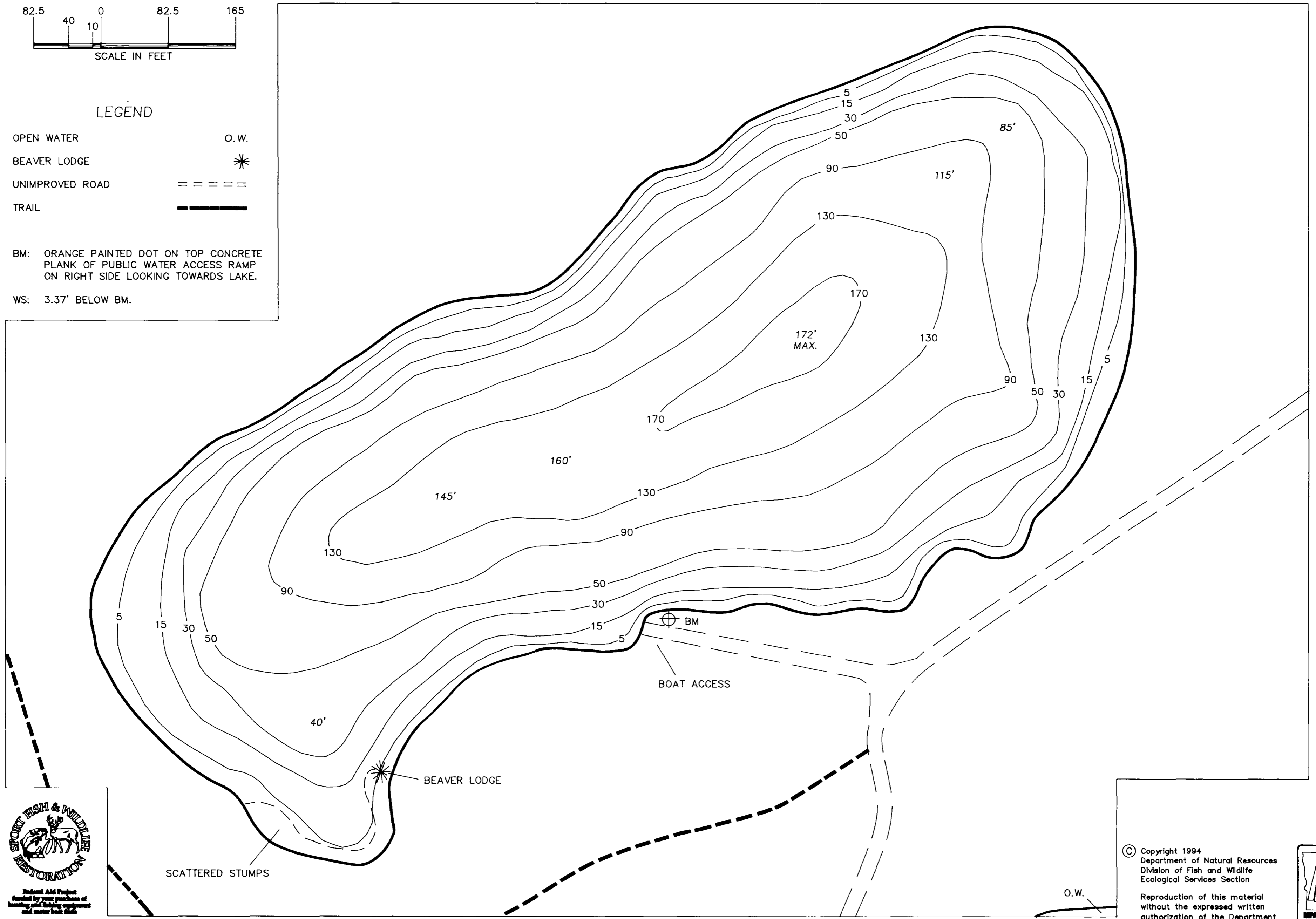
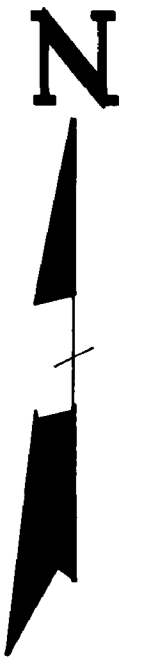


LEGEND

- OPEN WATER O.W.
 - BEAVER LODGE *
 - UNIMPROVED ROAD - - - - -
 - TRAIL - - - - -
- BM: ORANGE PAINTED DOT ON TOP CONCRETE PLANK OF PUBLIC WATER ACCESS RAMP ON RIGHT SIDE LOOKING TOWARDS LAKE.
WS: 3.37' BELOW BM.



© Copyright 1994
Department of Natural Resources
Division of Fish and Wildlife
Ecological Services Section
Reproduction of this material without the expressed written authorization of the Department of Natural Resources is prohibited.



COUNTY:	Crow Wing County	LAKE AREA:	15.5 ACRES
D.O.W. NUMBER:	18-667	LITTORAL AREA:	2.9 ACRES (18.7%)
TOWNSHIP:	46 N.	LAKE VOLUME:	1091.1 AC/FT.
RANGE:	29 W.	TOTAL SHORELINE (Mi.):	.7 MILES
SECTION:	6	MEAN DEPTH:	70.39 FT.

Section 6 Mine Pit

FIELDWORK LMK,LK	Map produced by:
DATE 7/10/92	STATE OF MINNESOTA
DRAWN BY: <i>[Signature]</i>	Dept. of Natural Resources
DATE 2/94	Division of Fish and Wildlife
PROJ. IDENT. NO.	Ecological Services Section
FW-6-S-10	Map code number:
	C-2943