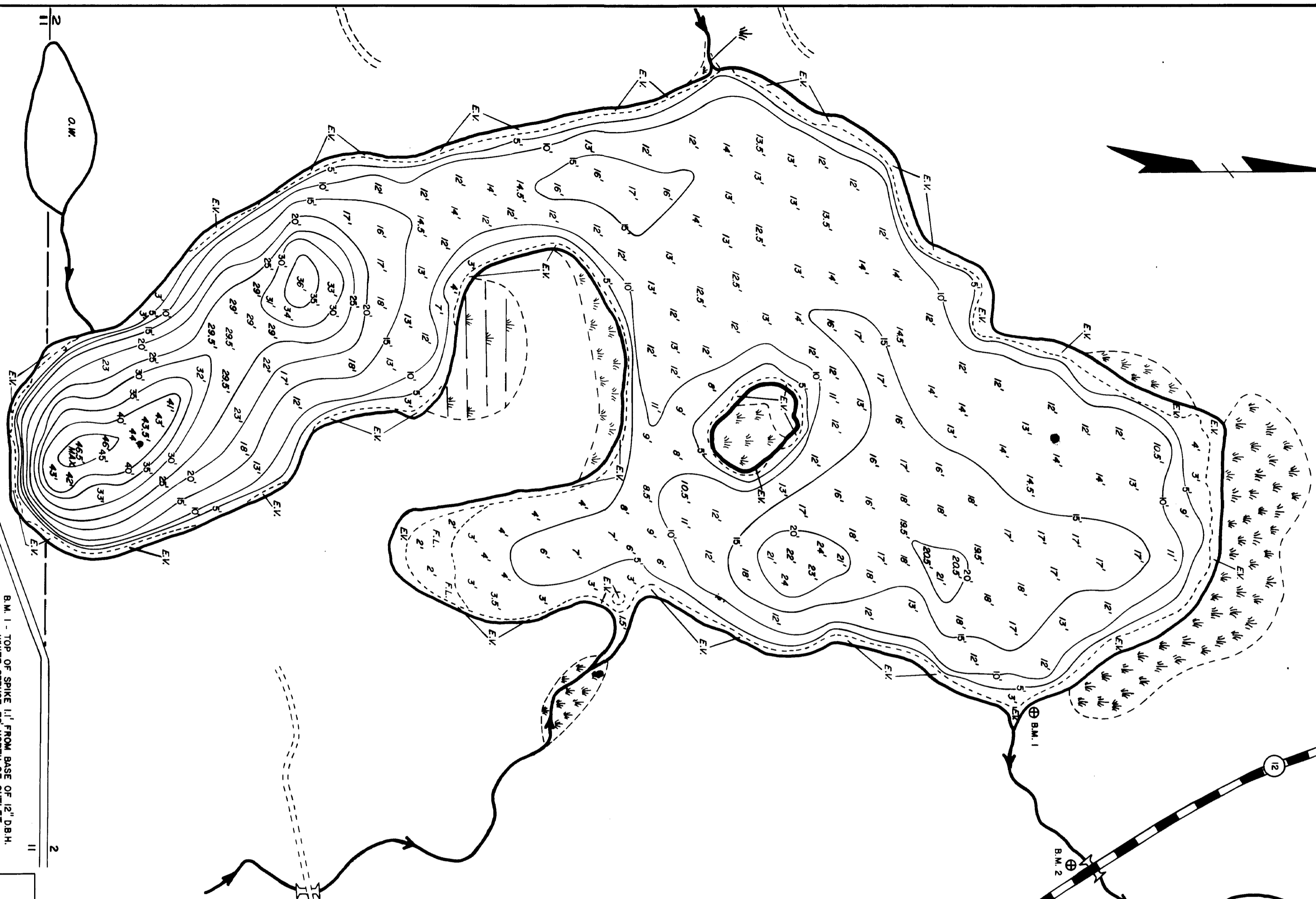
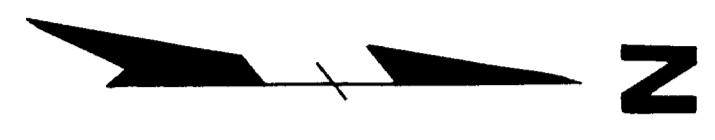


STEEL LAKE (29-22)

STATE OF MINNESOTA
 Department of Administration
 Minnesota's Bookstore
 Part of the Department of Administration
 Fish Commission Division
 To order reproduced copies of
 Contour Maps please call:
 612/297-3000 or our
 Nationwide toll-free number
 1-800-657-3757

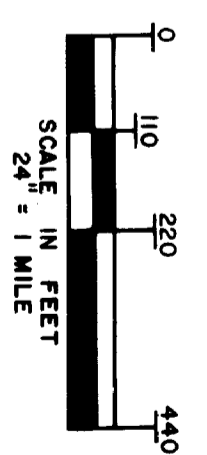


LEGEND

- EMERGENT VEGETATION E.K.
- FLOATING LEAF VEGETATION F.L.
- OPEN WATER O.W.
- MARSH M
- BRUSH SWAMP B.S.
- STREAM S
- BENCH MARK B.M.
- CULVERT C
- PAVED ROAD P.R.
- GRAVEL ROAD G.R.
- UNIMPROVED ROAD U.R.
- COUNTY STATE AID HIGHWAY C.S.A.H.
- SECTION LINE S.L.
- SECTION NUMBER 2

PLANIMETERED AREA 78.2 ACRES
 LITTORAL AREA 53.43 ACRES (68.4%)
 MEDIAN DEPTH 12.93 FEET
 LENGTH OF SHORELINE 2.2 MILES
 LENGTH OF ISLAND SHORELINE 0.1 MILES
 TOTAL LENGTH OF SHORELINE 2.3 MILES

LAKE OUTLINE DRAWN FROM 1977 BLUELINE
 AERIAL PHOTO NO. 286-4.



REPRODUCTION OF THIS MAP REQUIRES PROPER
 CREDITS TO: DIVISION OF FISH AND WILDLIFE,
 MINNESOTA DEPARTMENT OF NATURAL RESOURCES.
 FINANCED WITH AID OF DINGELL-JOHNSON FUNDS

STATE OF MINNESOTA
 DEPARTMENT OF NATURAL RESOURCES
 DIVISION OF FISH AND WILDLIFE
 ECOLOGICAL SERVICES SECTION
 ISLAND LAKE (29-7)
 HUBBARD COUNTY

B.M. 1 - TOP OF SPIKE 11' FROM BASE OF 12" D.B.H.
 WHITE SPRUCE TO NORTH OF OUTLET
 AND 36' FROM WATERS EDGE ON EAST
 SHORE OF LAKE.
 W.S.E. = 31' BELOW B.M. 1.
 B.M. 2 - TOP CENTER OF METAL CULVERT ON
 WEST SIDE OF COUNTY ROAD 12 AT THE
 OUTLET.
 W.S.E. = 13' BELOW B.M. 2. (8-22-88)

© COPYRIGHT 1989
 STATE OF MINNESOTA
 DEPARTMENT OF NATURAL RESOURCES
 DIVISION OF FISH AND WILDLIFE

T.140 N. R. 32 W. S. 2, 11
 FIELDWORK: R.E.R., L.M.K. DRAWN BY: [Signature] PROJ. IDENT. NO.
 DATE: 10-13-88 DATE: 4-12-89 F.W-6-S-5.6

C-2907

2907