
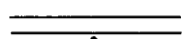
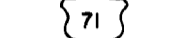



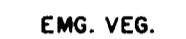


LONG LAKE 34-192

N

LEGEND

- PAVED ROAD 
- GRAVEL ROAD 
- UNITED STATES HIGHWAY 
- STATE HIGHWAY 
- CULVERT 
- DITCH 
- EMERGENT VEGETATION 

PLANIMETERED AREA = 164 ACRES  
 LITTORAL AREA = 123 ACRES  
 LENGTH OF SHORELINE = 2.3 MILES  
 ISLAND'S SHORELINE = 0.1 MILE

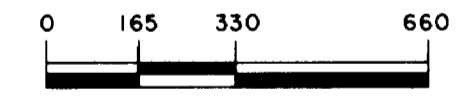
B.M.#1 = SPIKE IN 18" D.B.H. OAK TREE ON SMALL POINT, 40' FROM SHORE, ON N. SIDE OF LAKE.

W.S.ELEV. = 8.6' BELOW B.M.

B.M.#2 = TOP OF 30" CONCRETE CULVERT, UNDER ROAD, ON E. END OF LAKE.

W.S.ELEV. = 1.8' BELOW B.M.

OUTLINE DRAWN FROM 1963 AERIAL PHOTO  
 # BIZ - 4DD - 39.



SCALE IN FEET

© COPYRIGHT 1983  
 STATE OF MINNESOTA  
 DEPARTMENT OF NATURAL RESOURCES  
 DIVISION OF FISH AND WILDLIFE

STATE OF MINNESOTA  
 DEPARTMENT OF NATURAL RESOURCES

DIVISION OF GAME AND FISH  
 TECHNICAL SERVICES SECTION

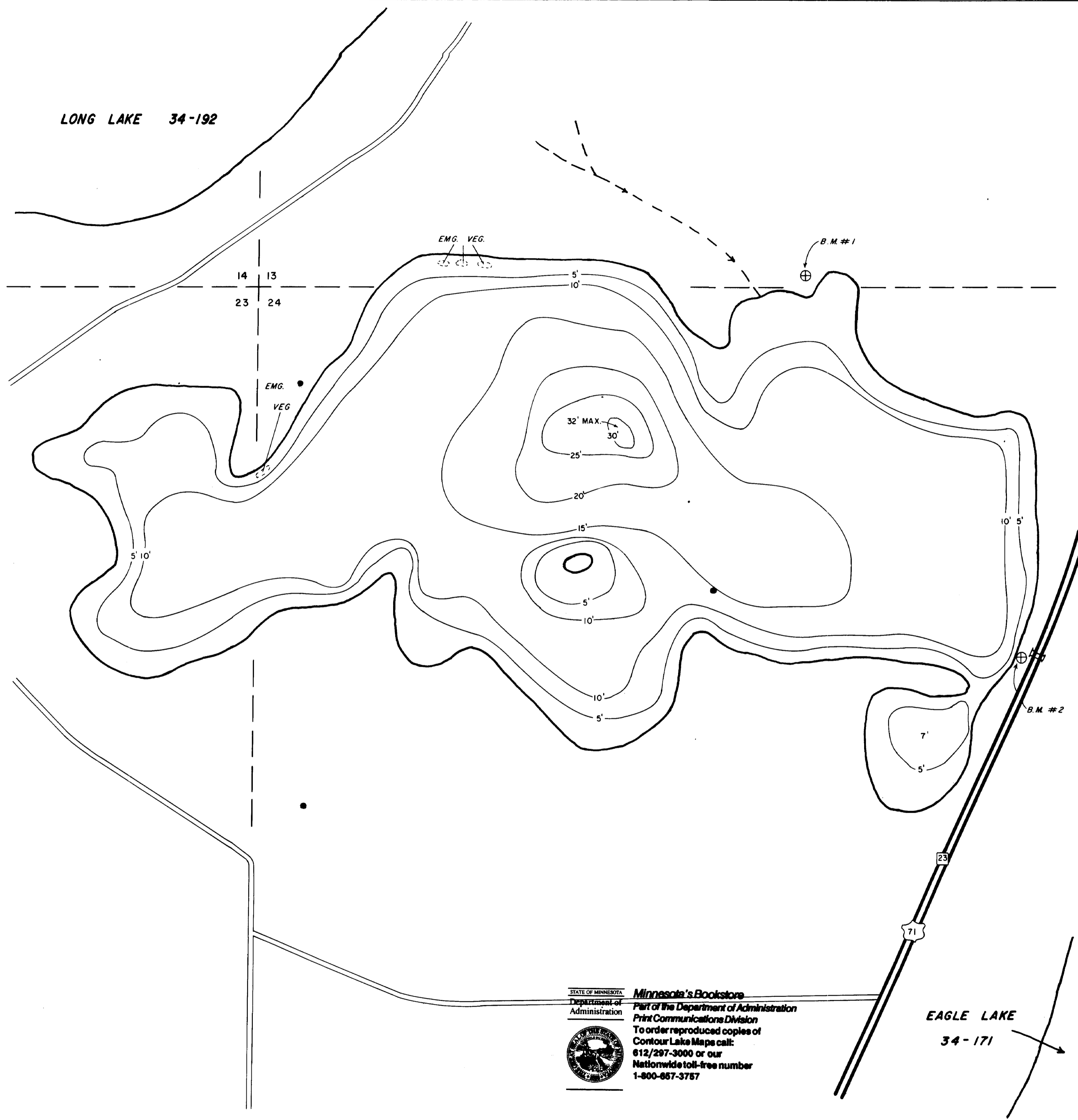
POINT LAKE 34-193  
 KANDIYOHI COUNTY

T. 120 N. R. 35 W. S. 13, 23, 24

FIELDWORK R.A.B., F.H.K.  
 DATE 6/30/71

DRAWN BY *P.W. Knabe*  
 DATE 3/7/72

PROJ. IDENT. NO.  
 FW-1-R-15



STATE OF MINNESOTA  
 Department of Administration  
**Minnesota's Bookstore**  
 Part of the Department of Administration  
 Print Communications Division  
 To order reproduced copies of  
 Contour Lake Maps call:  
 612/297-3000 or our  
 Nationwide toll-free number  
 1-800-657-3757



EAGLE LAKE  
 34-171