

STATE OF MINNESOTA
 Department of Administration
 Part of the Department of Administration
 Print Communications Division
 To order reproduced copies of
 Contour Lake Maps call:
 612/297-3000 or our
 Nationwide toll-free number
 1-800-657-3767



LEGEND

- PAVED ROAD
- BITUMINOUS ROAD
- GRAVEL ROAD
- TRAIL
- NATIONAL INTERSTATE
- U. S. HIGHWAY
- COUNTY HIGHWAY
- SUBMERGED VEGETATION *SUBMG. VEG.*
- EMERGENT VEGETATION *EMG. VEG.*
- MARSH AREA
- OPEN WATER *O. W.*
- INTERMITTENT STREAM
- PLANIMETERED AREA = 112 ACRES
- LITTORAL AREA = 96 ACRES
- LENGTH OF SHORELINE = 3.3 MILES

B. M. # 1 - TOP OF SPIKE IN TELEPHONE POLE
 15' FROM WATER'S EDGE 30' EAST OF
 ROAD ON NORTHWEST SIDE OF LAKE

W.S.E. - 7.4' BELOW B. M. # 1

B. M. # 2 - TOP OF SPIKE IN FOUR-TRUNKED
 WALNUT 30' WEST OF FENCE LINE
 40' FROM WATER'S EDGE ON SOUTH
 SIDE OF LAKE

W.S.E. - 7.0' BELOW B. M. # 2



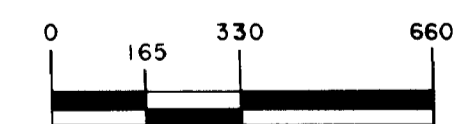
STATE OF MINNESOTA
 DEPARTMENT OF NATURAL RESOURCES

DIVISION OF GAME AND FISH
 TECHNICAL SERVICES SECTION

HANSEL LAKE 56-615
 OTTER TAIL COUNTY

T. 131 R. 42 S. 26,27

FIELDWORK RLM & CMH	DRAWN BY GMS	PROJ. IDENT. NO.
DATE 6/30/71	DATE 1/6/72	FW-1-R - 15



OUTLINE DRAWN FROM 1963 AERIAL
 PHOTO - DA - 1DD - 40

© COPYRIGHT 1993
 STATE OF MINNESOTA
 DEPARTMENT OF NATURAL RESOURCES
 DIVISION OF FISH AND WILDLIFE