

LEGEND

- BITUMINOUS ROAD
- GRAVEL ROAD
- TRAIL
- INTERMITTENT STREAM
- CULVERT
- OPEN WATER
- EMERGENT VEGETATION
- COUNTY HIGHWAY
- PLANIMETERED AREA = 632 ACRES
- LITTORAL AREA = 268 ACRES
- LENGTH OF SHORELINE = 5 MILES

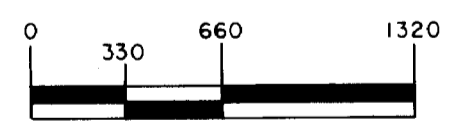
B.M. #1- METAL FENCE POST AT BASE OF OAK TREE ON NORTHWEST SIDE OF LAKE ALONG STAIRWAY 3' FROM WATER.

W.S.E. - 2.5' BELOW B.M. #1

B.M. #2- SPIKE IN 10" DBH BIRCH 30' FROM SHORE ON EAST SIDE OF PUBLIC ACCESS ON SOUTH SIDE OF LAKE

W.S.E. - 4.5' BELOW B.M. #2

OUTLINE DRAWN FROM 1953 AERIAL PHOTO - BXX - 1M - 52



STATE OF MINNESOTA
DEPARTMENT OF NATURAL RESOURCES

DIVISION OF GAME AND FISH
TECHNICAL SERVICES SECTION

SNIDER (SNYDER) LAKE 44-45
MAHNOMEN COUNTY

T 143 R 39,40 S VAR.

FIELDWORK FHK & RAB	DRAWN BY GMS	PROJ. IDENT. NO.
DATE 8/3,4/71	DATE 12/16/71	FW-1-R - 16

STATE OF MINNESOTA
Department of Administration
Minnesota's Bookstore
Part of the Department of Administration
Print Communications Division
To order reproduced copies of
Contour Lake Maps call:
612/297-3000 or our
Nationwide toll-free number
1-800-657-3757



© COPYRIGHT 1993
STATE OF MINNESOTA
DEPARTMENT OF NATURAL RESOURCES
DIVISION OF FISH AND WILDLIFE