



LEGEND

- GRAVEL ROAD
- MARSH
- BRUSH SWAMP
- OPEN WATER

B.M. #1 = SPIKE IN 14" D.B.H. WHITE PINE, 2'
FROM SHORE 60 YARDS N. OF CABIN ON
E. SHORE OF LAKE.
W.S. ELEV. = 2.1' BELOW B.M. #1

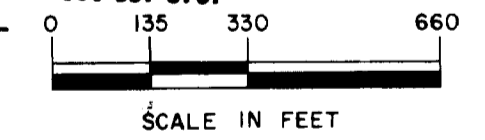
B.M. #2 = SPIKE IN DOUBLE TRUNKED BASS-
WOOD TREE, 7' FROM SHORE, ON N. SIDE
OF PUBLIC ACCESS ON W. SIDE OF LAKE.
W.S. ELEV. = 2.8' BELOW B.M. #2

PLANIMETERED AREA = 95 ACRES
LITTORAL AREA = 36 ACRES
LENGTH OF SHORELINE = 18 MILES

OUTLINE DRAWN FROM 1955 AERIAL PHOTO
CWC - 2 - 123.

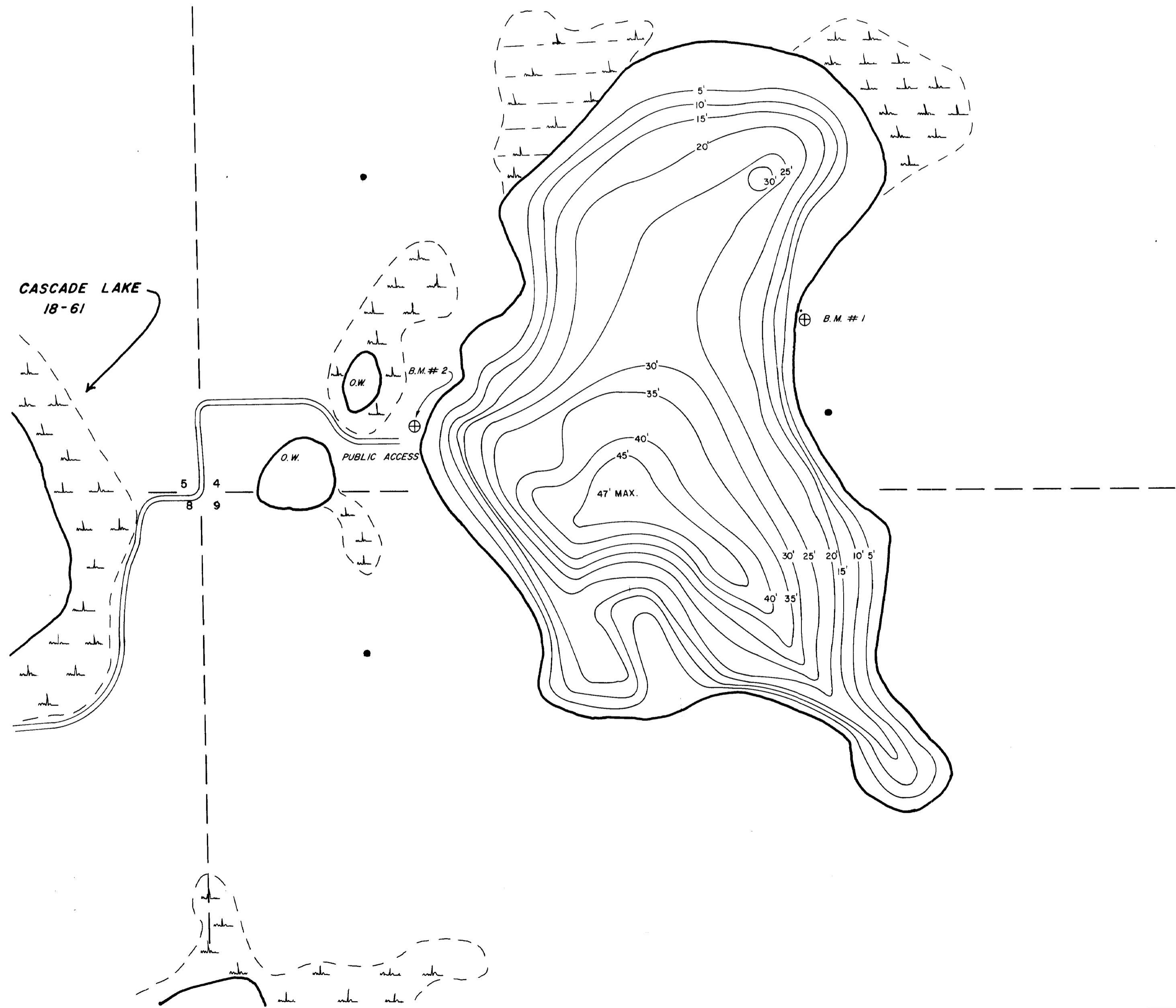
STATE OF MINNESOTA
Department of
Administration

Minnesota's Bookstore
Part of the Department of Administration
Print Communications Division
To order reproduced copies of
Contour Lake Maps call:
612/297-3000 or our
Nationwide toll-free number
1-800-657-3757



© COPYRIGHT 1993
STATE OF MINNESOTA
DEPARTMENT OF NATURAL RESOURCES
DIVISION OF FISH AND WILDLIFE

STATE OF MINNESOTA DEPARTMENT OF NATURAL RESOURCES		
DIVISION OF GAME AND FISH TECHNICAL SERVICES SECTION		
BLACK LAKE 18-59 CROW WING COUNTY		
T. 46 N.	R. 28 W.	S. 4, 9
FIELDWORK R.L.M., C.M.H. DATE 5/27/71	DRAWN BY <i>R.H. Knuts</i> DATE 10/28/71	PROJ. IDENT. NO. FW-1-R-15



CASCADE LAKE
18-61