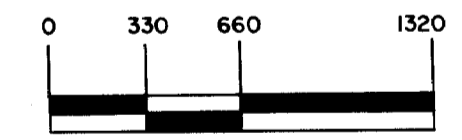


LEGEND

- BITUMINOUS ROAD
- GRAVEL ROAD
- COUNTY STATE AID HIGHWAY
- MARSH AREA
- EMERGENT VEGETATION
- DITCH
- OPEN WATER

PLANIMETERED AREA = 318 ACRES
 LITTORAL AREA = 100 %
 LENGTH OF SHORELINE = 4.8 MILES

B.M. # 1 = TOP OF C.M.C. 10' FROM WATER'S EDGE ON WEST SIDE OF LAKE.
 W.S.E. = 3.7' BELOW B.M. # 1.
 B.M. # 2 = TOP OF SPIKE IN 10" D.B.H. COTTONWOOD ON NORTH SIDE OF BOAT RAMP AT PUBLIC ACCESS ON N.W. SIDE OF LAKE.
 W.S.E. = 2.5' BELOW B.M. # 2.
 OUTLINE DRAWN FROM 1955 AERIAL PHOTO
 # BJS-9P-62.



© COPYRIGHT 1993
 STATE OF MINNESOTA
 DEPARTMENT OF NATURAL RESOURCES
 DIVISION OF FISH AND WILDLIFE

STATE OF MINNESOTA DEPARTMENT OF CONSERVATION		
DIVISION OF GAME AND FISH TECHNICAL SERVICES SECTION		
SCHOOL GROVE LAKE (42-2) LYON & YELLOW MEDICINE COUNTIES		
T.113 N.	R. 39 & 40 W.	S.31; 25, 26 & 36.
FIELDWORK C.M.H. & F.H.K. DATE 5/27/70	DRAWN BY C.M.H. DATE 3/18/71	PROJ. IDENT. NO. FW-1-R-14

STATE OF MINNESOTA
 Department of Administration
Minnesota's Bookstore
 Part of the Department of Administration
 Print Communications Division
 To order reproduced copies of
 Contour Lake Maps call:
 612/297-3000 or our
 Nationwide toll-free number
 1-800-657-3767

