








N

LEGEND

- GRAVEL ROAD 
 - UNIMPROVED ROAD 
 - MARSH AREA 
 - BRUSH OR SHRUB SWAMP 
 - SUBMERGED VEGETATION 
 - EMERGENT VEGETATION 
 - WILDLIFE MANAGEMENT AREA 
- PLANIMETERED AREA = 94 ACRES
 LITTORAL AREA = 50 ACRES
 LENGTH OF SHORELINE = 2.1 MILES

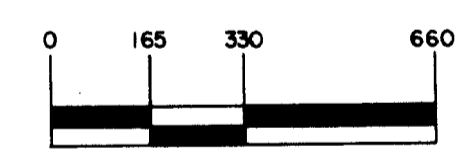
B.M. # 1 = TOP OF SPIKE IN COTTONWOOD TREE (15" D.B.H.) ON NORTH SIDE OF BOAT LANDING 20' FROM WATER'S EDGE ON NORTHWEST SIDE OF LAKE.

W.S.E. = 4.3' BELOW B.M. # 1.

B.M. # 2 = TOP OF METAL STAKE 1' FROM 24" D.B.H. WHITE PINE ON WEST SIDE OF STAND OF TREES ON POINT ON NORTHEAST SIDE OF LAKE 75' FROM WATER'S EDGE.

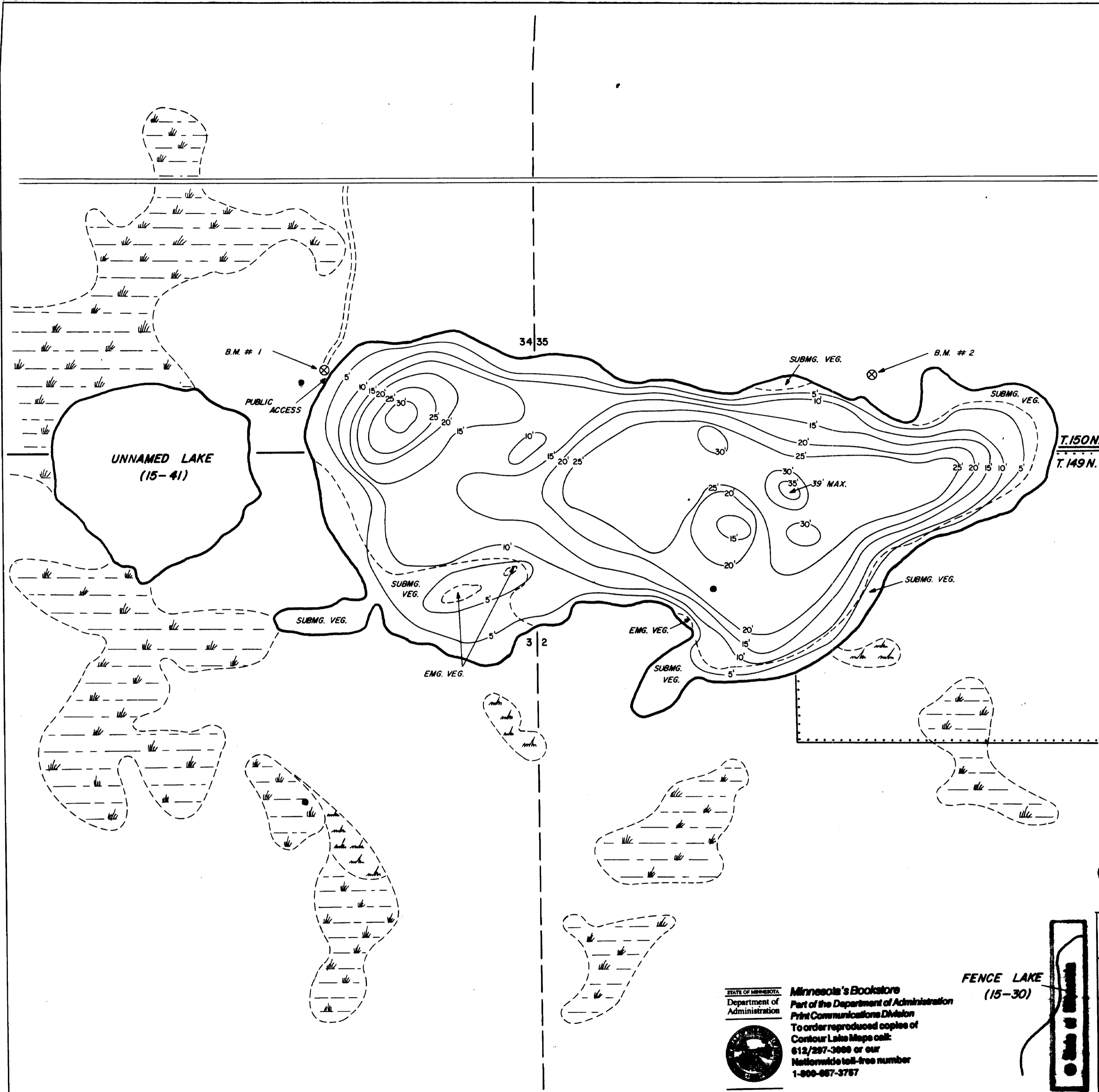
W.S.E. = 7.8' BELOW B.M. # 2.

OUTLINE DRAWN FROM 1960 AERIAL PHOTO
 # BXS-1AA-140.



© COPYRIGHT 1993
 STATE OF MINNESOTA
 DEPARTMENT OF NATURAL RESOURCES
 DIVISION OF FISH AND WILDLIFE

STATE OF MINNESOTA DEPARTMENT OF CONSERVATION		
DIVISION OF GAME AND FISH TECHNICAL SERVICES SECTION		
BAGLEY LAKE (15-40) CLEARWATER COUNTY		
T. 149, 150 N.	R. 36 W.	S. 2, 3, 34, 35.
FIELDWORK C.M.H. & F.H.K. DATE 7/7/70	DRAWN BY C.M.H. DATE 3/10/71	PROJ. IDENT. NO. FW-1-R-15



STATE OF MINNESOTA
 Department of Administration
Minnesota's Bookstore
 Part of the Department of Administration
 Print Communications Division
 To order reproduced copies of
 Contour Lake Maps call:
 612/297-3000 or our
 Nationwide toll-free number
 1-800-667-3767

