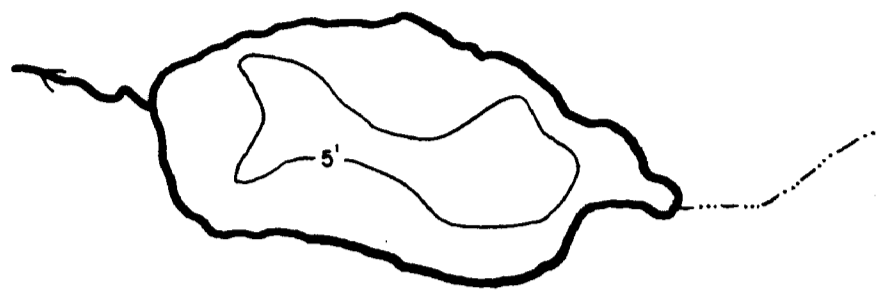


PENDANT LAKE

R. 1W - Sec. 36

16-163
D.O.W. - 26 ACRES

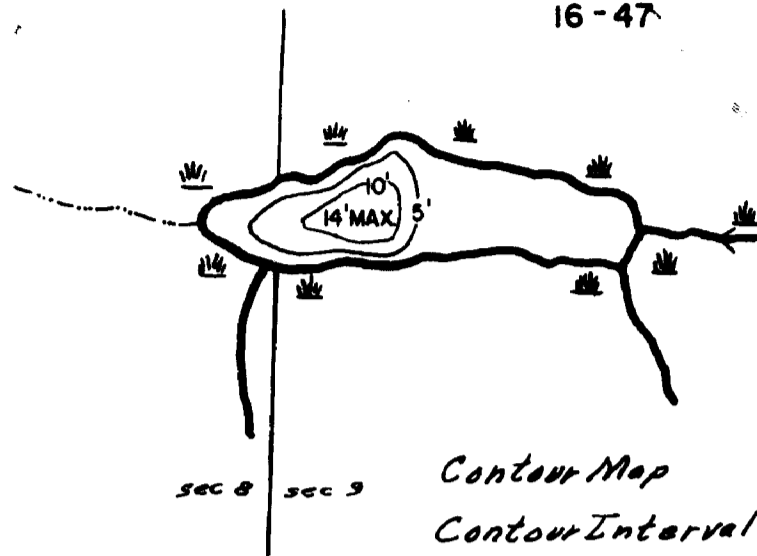


Contour Map
Interval - 5ft.

SCABBARD LAKE

R. 2E - Sec. 5 & 8

D.O.W. - 12 ACRES
16-47

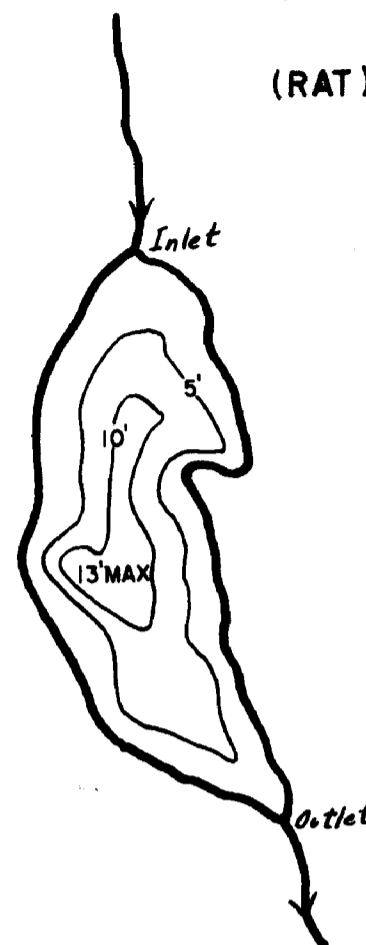


Contour Map
Contour Interval - 5ft.

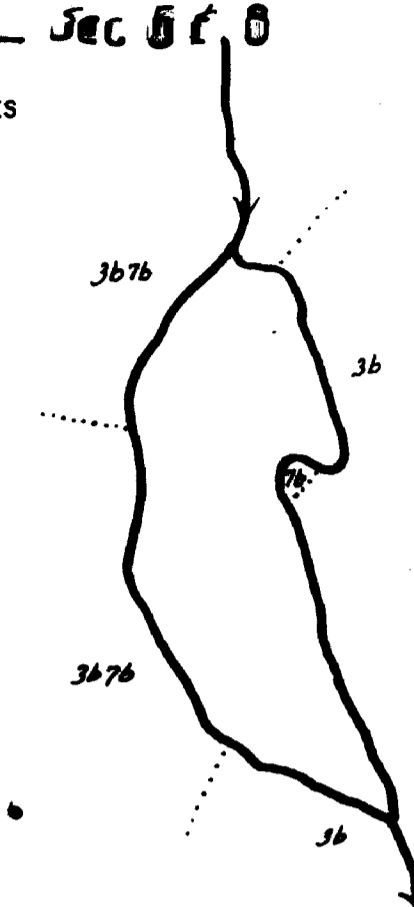
THIRD KIMBALL LAKE

16-44

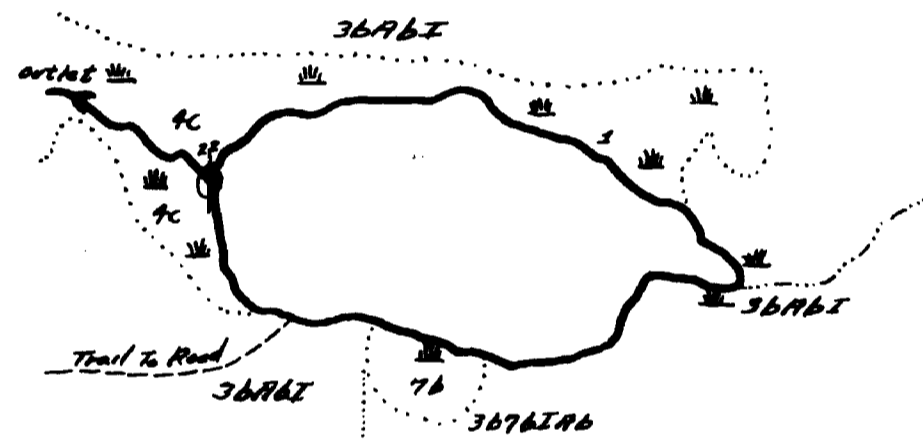
(RAT) (BOYS)
R. 2E - Sec. 8
D.O.W. - 23 ACRES



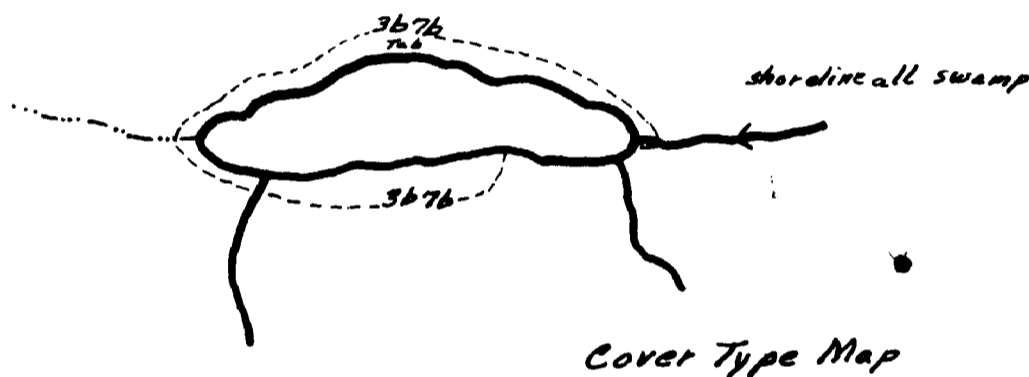
Contour Map
Contour Interval - 5ft.



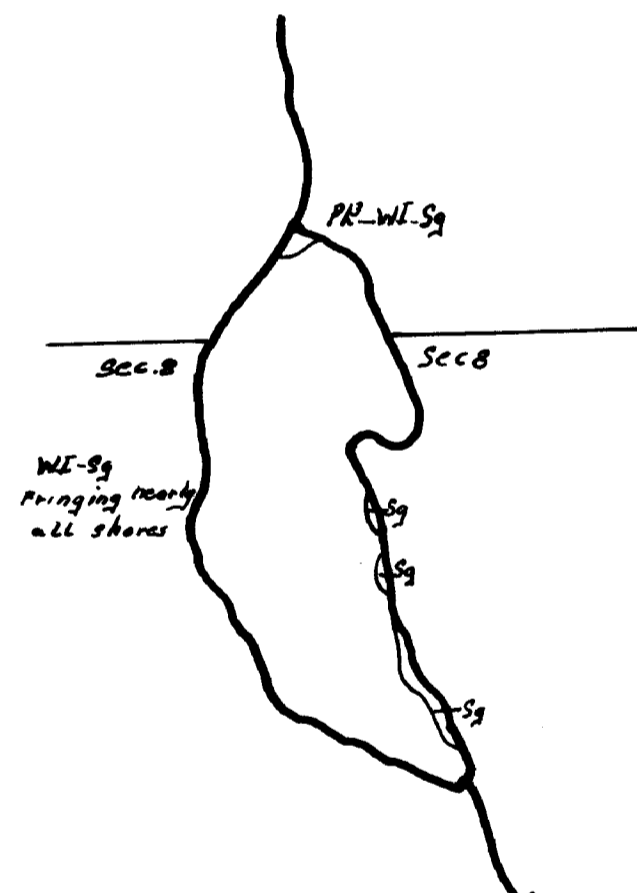
Cover Type Map



Shoreline & Cover Type Map



Cover Type Map

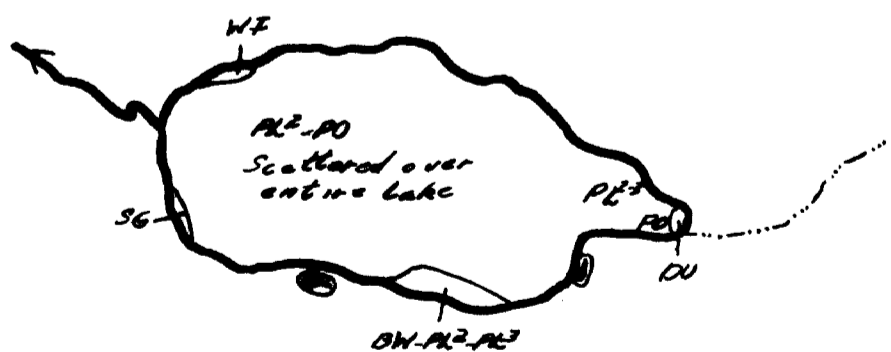


Shore Type and
Aquatic Vegetation Map

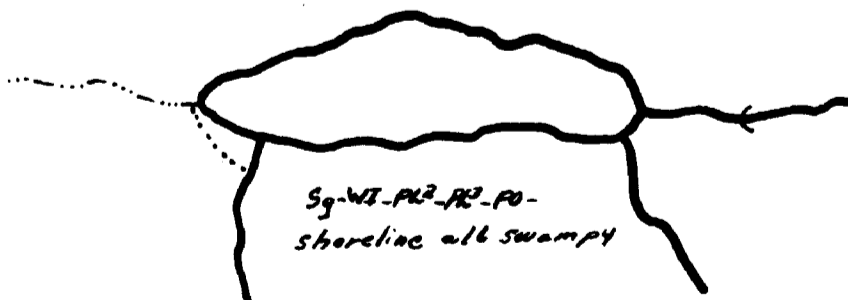


© COPYRIGHT 1993
STATE OF MINNESOTA
DEPARTMENT OF NATURAL RESOURCES
DIVISION OF FISH AND WILDLIFE

© State of Minnesota
COOK COUNTY



Aquatic Vegetation Map



Shore Type and
Aquatic Vegetation Map

STATE OF MINNESOTA
Department of Administration
Minnesota's Bookstore
Part of the Department of Administration
Print Communications Division
To order reproduced copies of
Contour Lake Maps call:
612/297-3000 or our
Nationwide toll-free number
1-800-657-3757



© State of Minnesota 1964

D.O.W.
FILE NO. C-1126

THIS PRINT FURNISHED BY THE MINNESOTA
DEPARTMENT OF CONSERVATION, ST. PAUL, MN.
MINNESOTA. NO RESPONSIBILITY IS ASSUMED FOR
THE ACCURACY OF THE DATA SHOWN OR FOR
HANDLING OR ADDITIONS MADE BY OTHERS. IF
REPRODUCED PROPER CREDIT MUST BE GIVEN.

STATE OF MINNESOTA DEPARTMENT OF CONSERVATION		
DIVISION OF GAME AND FISH BUREAU OF RESEARCH AND PLANNING		
PENDANT, SCABBARD, AND THIRD KIMBALL LAKE.		
TWP. 62 N.	R. ABOVE	SEC. ABOVE
FIELDWORK - SOULEN	DRAWN BY - LESTER	PROJ. IDENT. NO.
DATE: 1940	DATE: 4-28-60	FW-1-R-4