

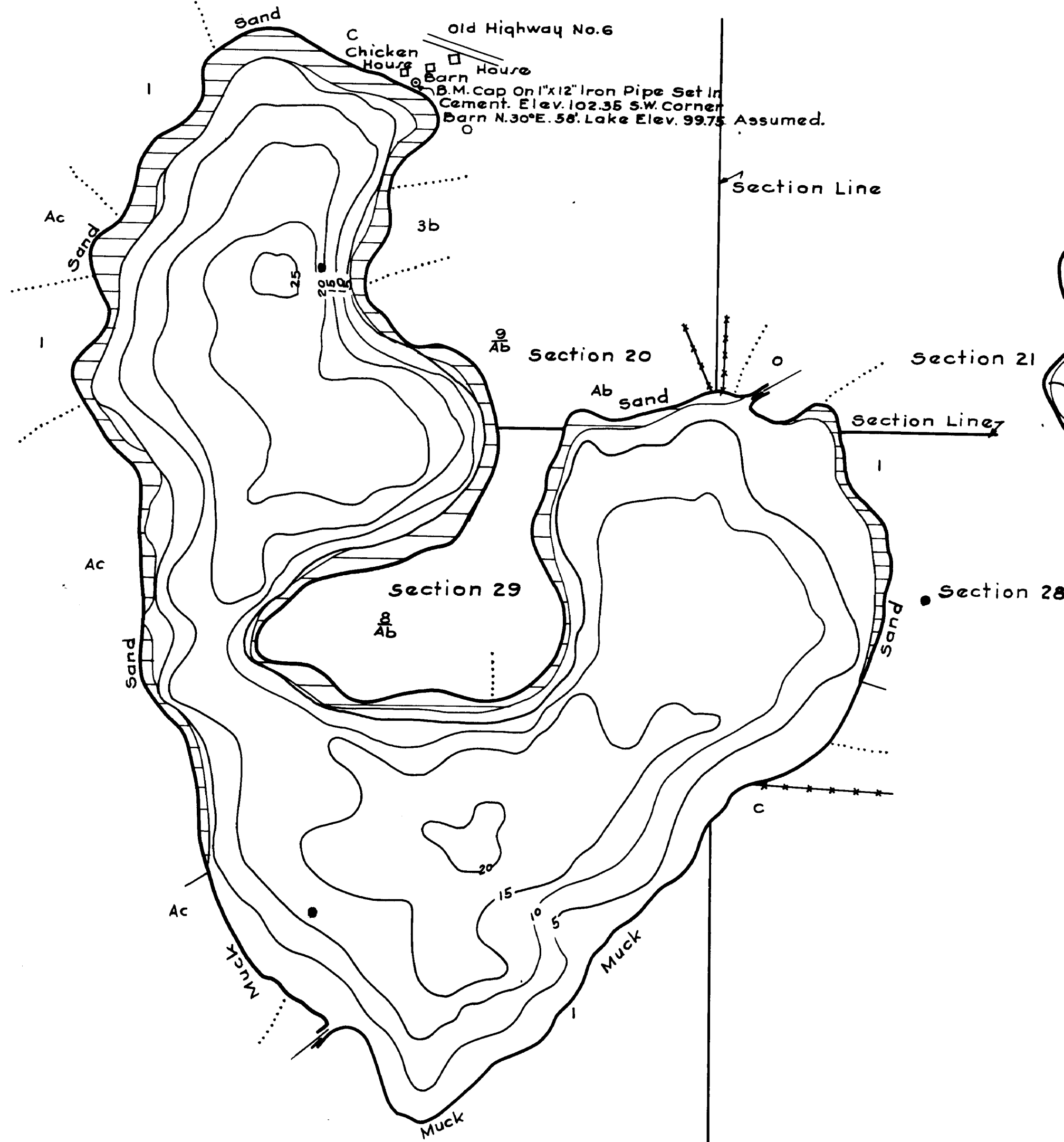
LAKE AND STREAM SURVEY
VERMILLION LAKE II-29
 Chippewa National Forest
 Minnesota

Location: Secs 20-21-28-29, T.143N. R.25W
 Scale: 8" = 1 Mile

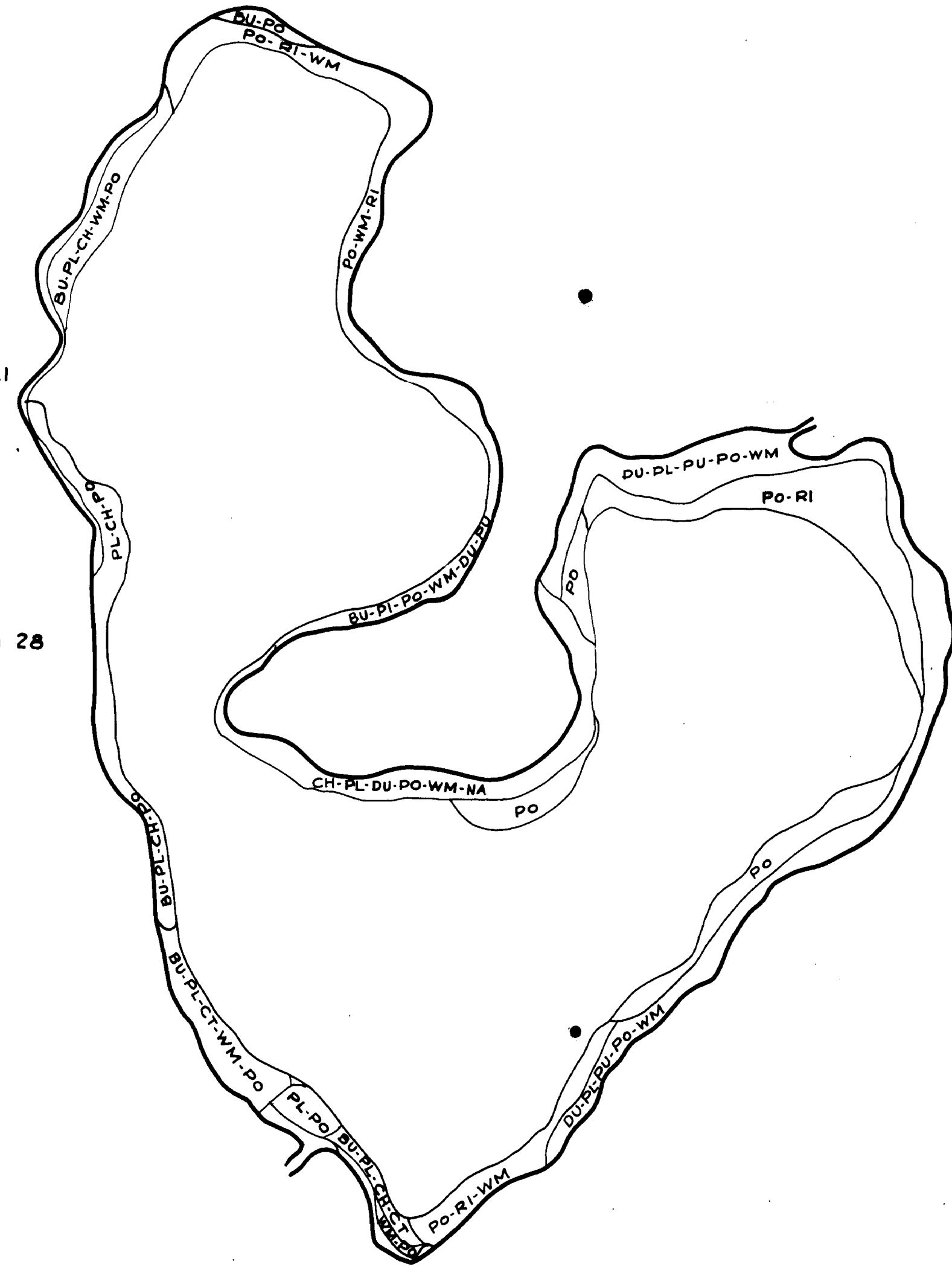
CASS COUNTY

ALL OF THE DATA SHOWN ON FOR
 CHANGES OR ADDITIONS MADE BY OTHERS. IF
 PROTECTED, PROPER CREDIT MUST BE GIVEN.

Area Acres: 417.0A.
 Length of Shoreline: 5 Miles



Contour Map Contour Interval 5'
 Cover Type And
 Lake Bottom Soil Type Map.



Aquatic Vegetation Map

COPYRIGHT 1992
 STATE OF MINNESOTA
 DEPARTMENT OF NATURAL RESOURCES
 DIVISION OF FISH AND WILDLIFE

© State of Minnesota 1992

196

© State of Minnesota 1994