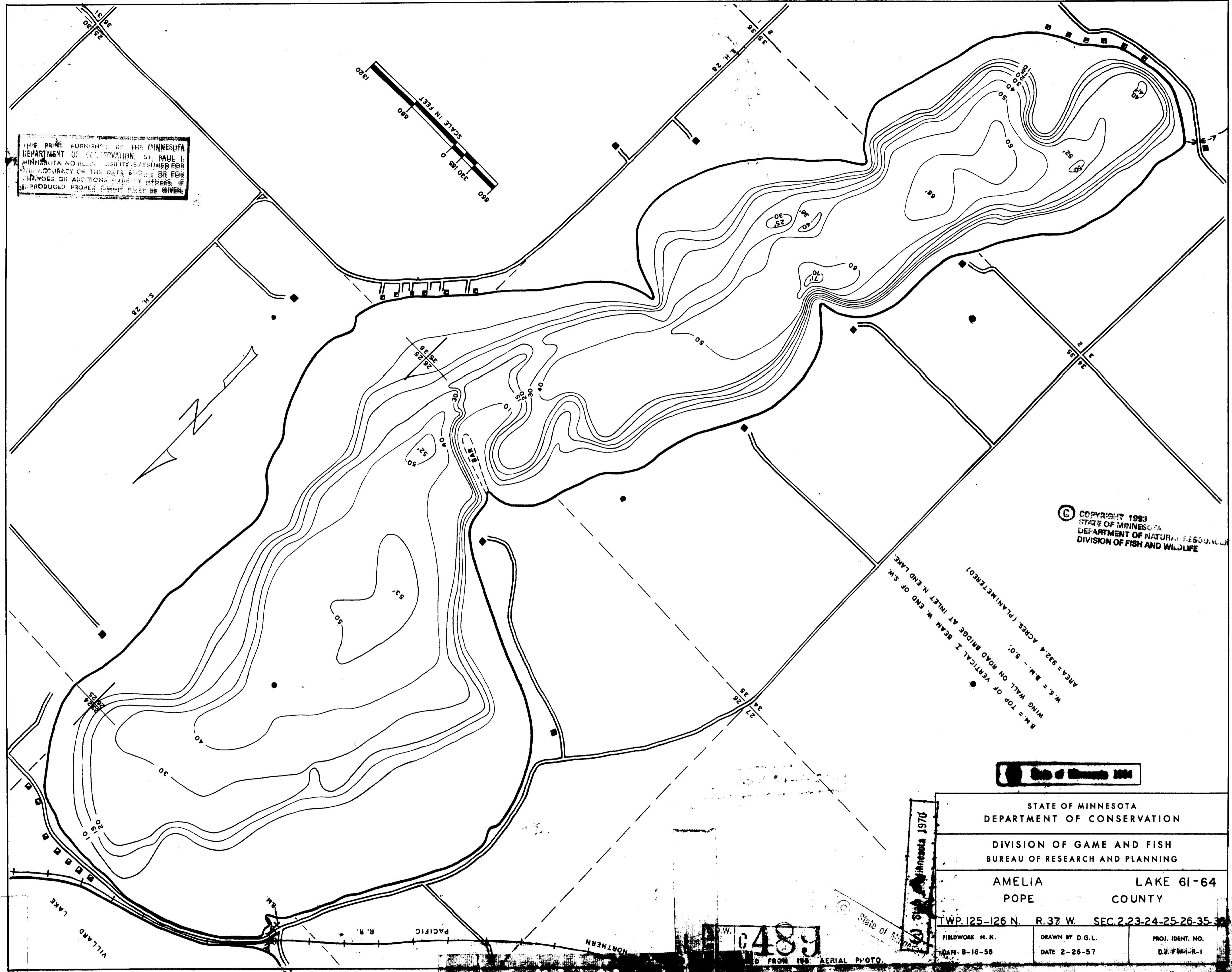
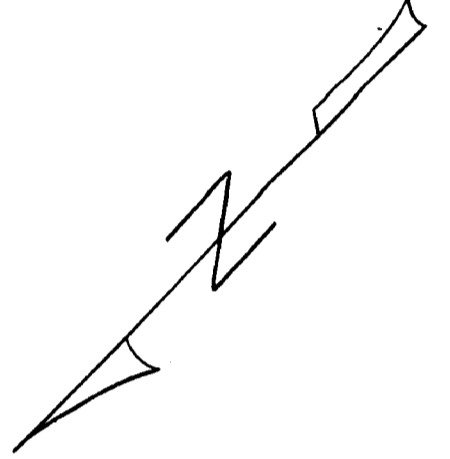
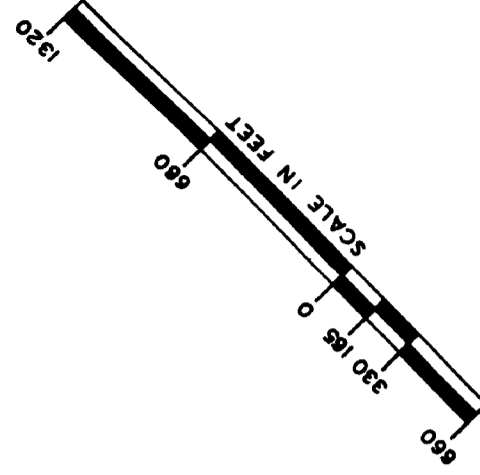


THIS PRINT FURNISHED BY THE MINNESOTA DEPARTMENT OF CONSERVATION, ST. PAUL 1, MINNESOTA. NO RESPONSIBILITY IS ASSUMED FOR THE ACCURACY OF THE DATA SHOWN OR FOR CHANGES OR ADDITIONS MADE BY OTHERS. IF PRODUCED PROPER CREDIT MUST BE GIVEN.



© COPYRIGHT 1993
STATE OF MINNESOTA
DEPARTMENT OF NATURAL RESOURCES
DIVISION OF FISH AND WILDLIFE

AREA = 322.4 ACRES (PLANNETTERED)
W. S. = B.M. - 501
B.M. = TOP OF VERTICAL I BEAM W. END OF S.W. WING WALL ON ROAD BRIDGE AT INLET N. END LAKE.

Map of Minnesota 1994

STATE OF MINNESOTA DEPARTMENT OF CONSERVATION		
DIVISION OF GAME AND FISH BUREAU OF RESEARCH AND PLANNING		
AMELIA POPE	LAKE 61-64 COUNTY	
TWP. 125-126 N. R. 37 W. SEC. 2, 23-24-25-26-35-36		
FIELDWORK H. K. DATE 8-16-56	DRAWN BY D.G.L. DATE 2-26-57	PROJ. IDENT. NO. D.J. 764-R-1

6489

FROM 1955 AERIAL PHOTO.