

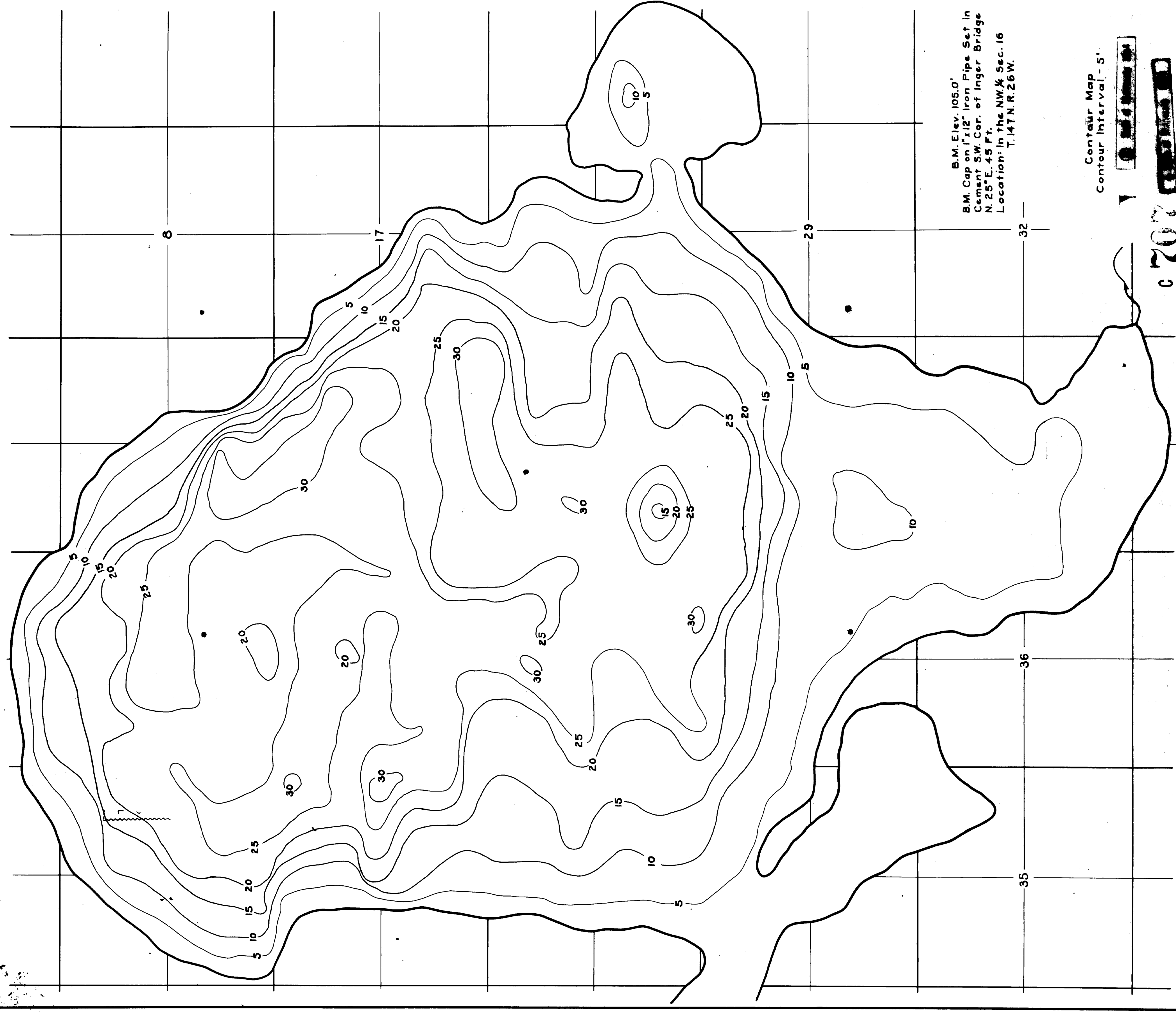
REPRODUCED FROM THE ORIGINAL SURVEY MAP BY THE U.S. GEOLOGICAL SURVEY. THE ORIGINAL SURVEY MAP WAS MADE BY THE U.S. GEOLOGICAL SURVEY. HANDED OR ADJUSTED MAPS BY THE U.S. GEOLOGICAL SURVEY. REPRODUCED FROM THE ORIGINAL SURVEY MAP BY THE U.S. GEOLOGICAL SURVEY.

R-9
U.S. Department of Agriculture
Forest Service
LAKE AND STREAM SURVEY
BOWSTRING LAKE
Chippewa National Forest
Minnesota

© COPYRIGHT 1963
STATE OF MINNESOTA
DEPARTMENT OF NATURAL RESOURCES
DIVISION OF FISH AND WILDLIFE
Location: Secs. 6, 7, 17-21, 28-32, T. 147 N. R. 25 W.
Secs. 1, 2, 11-14, 23-26, 35, 36, T. 147 N. R. 26 W.
Secs. 5, 6, T. 146 N. R. 25 W.
Scale: 4 inches = 1 mile

Sheet 1 of 1

Area: 8,922 Acres
Length of Shoreline: 2.1 Miles



B.M. Elev. 105.0'
B.M. Cap on 1 1/2" Iron Pipe Set in
Cement S.W. Cor. of Inger Bridge
N. 25° E. 45 Ft.
Location: In the NW 1/4 Sec. 16
T. 147 N. R. 26 W.

Contour Map
Contour Interval - 5'

