

ENTIRE AREA SHOWN ON MAP WITHIN WHITE EARTH INDIAN RESERVATION

WHITE EARTH STATE FOREST

R 39 W

T 142 N

T 141 N

R 38 W

B.M.#2

B.M.#1

B.M.#1

B.M.#2

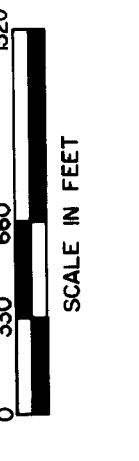
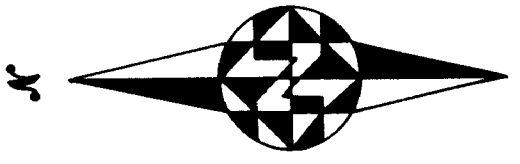
TAMARAC NATIONAL WILDLIFE REFUGE

MALLARD LAKE 3-235

BEAVER LAKE 3-150

ROUND LAKE 3-155

- LEGEND**
- GRAVEL ROAD
 - UNIMPROVED ROAD
 - BRIDGE
 - WILDLIFE REFUGE BOUNDARY
 - STATE FOREST BOUNDARY
 - STREAM
 - DAM
 - MARSH AREA
 - EMERGENT VEGETATION
 - OPEN WATER
 - PLANNED AREA
 - LITTORAL AREA
 - LENGTH OF SHORELINE
 - B.M.#1 GAUGE ON DAM WALL AT OUTLET TO ROUND LAKE ON SOUTH END OF LAKE
 - B.M.#2 GAUGE ON SOUTHWEST CORNER OF DAM
 - WSELEVE + 3.30 ON GAUGE
 - WSELEVE + 2.30' BELOW BENCHMARK



MINNESOTA'S BIODIVERSITY
 Part of the Department of Administration
 Part Communications Division
 To order reproduced copies of
 Contour Lake Maps call:
 612/297-3000 or our
 Nationwide toll-free number
 1-800-687-3787

STATE OF MINNESOTA
 Department of Administration
 Part Communications Division
 To order reproduced copies of
 Contour Lake Maps call:
 612/297-3000 or our
 Nationwide toll-free number
 1-800-687-3787

LAKE OUTLINE DRAWN FROM 1968 AERIAL PHOTOS
 NOS. 8X0.3FF-85
 8X0.3FF-823
 8X0.3FF-124

STATE OF MINNESOTA	
DEPARTMENT OF NATURAL RESOURCES	
DIVISION OF GAME AND FISH	
TECHNICAL SERVICES SECTION	
MANY POINT LAKE	3-156
BECKER COUNTY	
T. 141, 142 N.	S. 38, 39, 20, 25, 32, 35, 6
R. 38, 39 W.	DATE
DRAWN BY R. J. [Signature]	1-24-72
FIELDWORK	PROJEKT NO.
8-14-18, 19-71	1-1-1-16