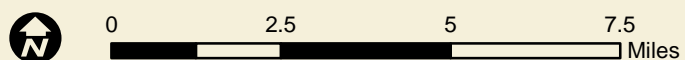


## Overview Map with Planning Segments

### Camp Ripley/Veterans State Trail Corridor Study

Figure 4  
January, 2012



## Legend

- State Highways
- Railroad
- Camp Ripley Boundary
- Municipal Boundary

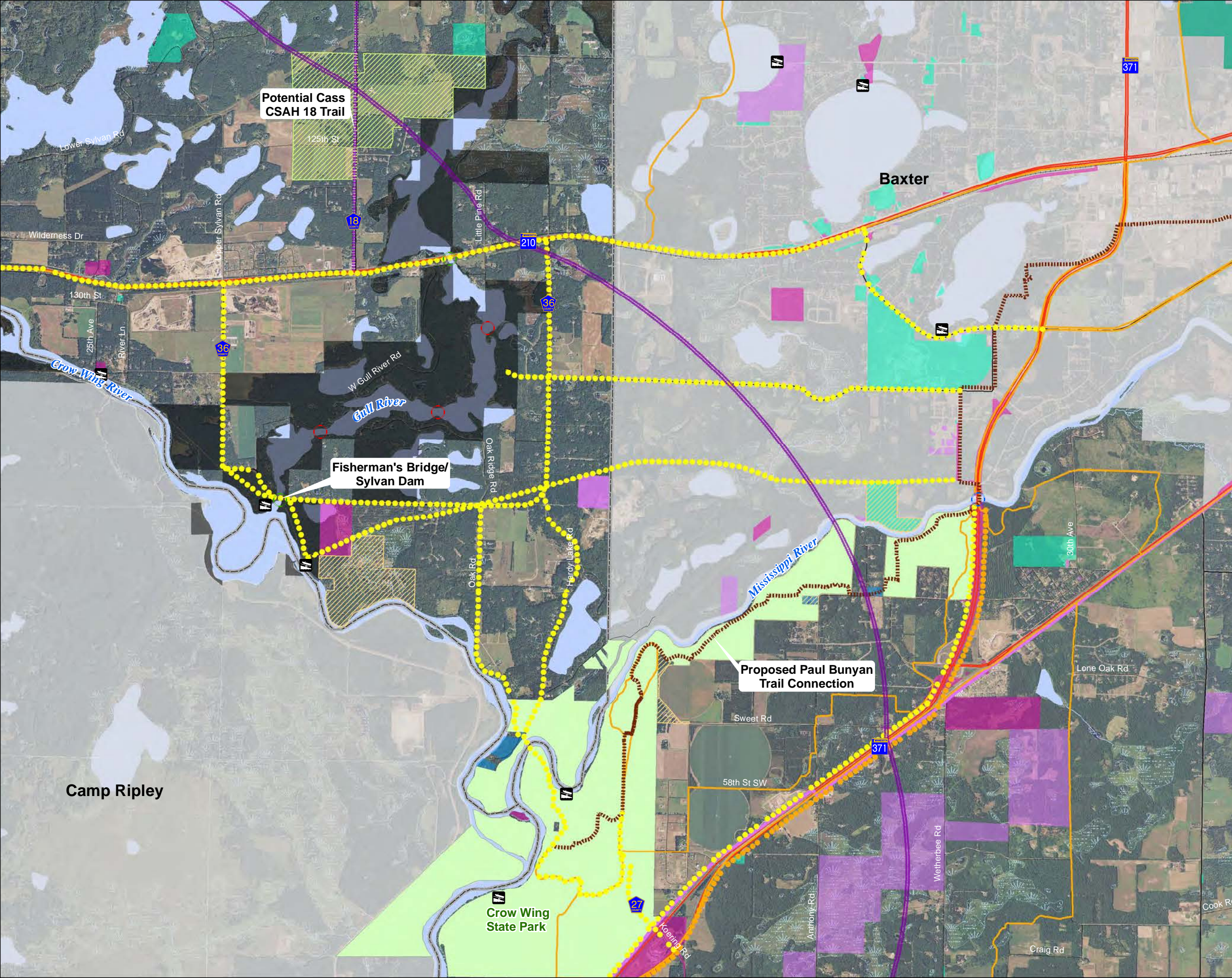
Source: MnDNR, MnDOT, MPCA





# CAMP RIPLEY/VETERANS STATE TRAIL

Figure 5: Overview Map



**Legend**

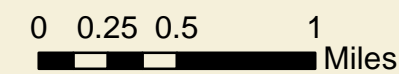
- Water Access Site
- Alternative Multiuse Alignments
- Alternative Motorized Only Alignments
- Paul Bunyan State Trail
- Planned Paul Bunyan State Trail
- Grant-in-Aid Snowmobile Trail
- Regional ATV Trails
- Potential Cass County Trail

**ACUB Parcels**

- BWSR Easement
- DNR Easement
- State Park
- State Scientific and Natural Areas
- State Forest
- State Wildlife Management Area Boundaries
- Municipal Boundary & Camp Ripley
- Lakes/Rivers
- Wetlands

**Land Ownership**

- State
- Minnesota Power and Light
- Existing Bridge - can accommodate trail
- Existing Bridge - not able to accommodate trail
- New Bridge Search Area



**Segment 1:**  
Crow Wing State Park to Pillager

**Segment 1A**

August 2012

Source: MnDNR, Mn\DOT, Cass County, Crow Wing County, Morrison County



Camp Ripley

Baxter

Potential Cass CSAH 18 Trail

Fisherman's Bridge/Sylvan Dam

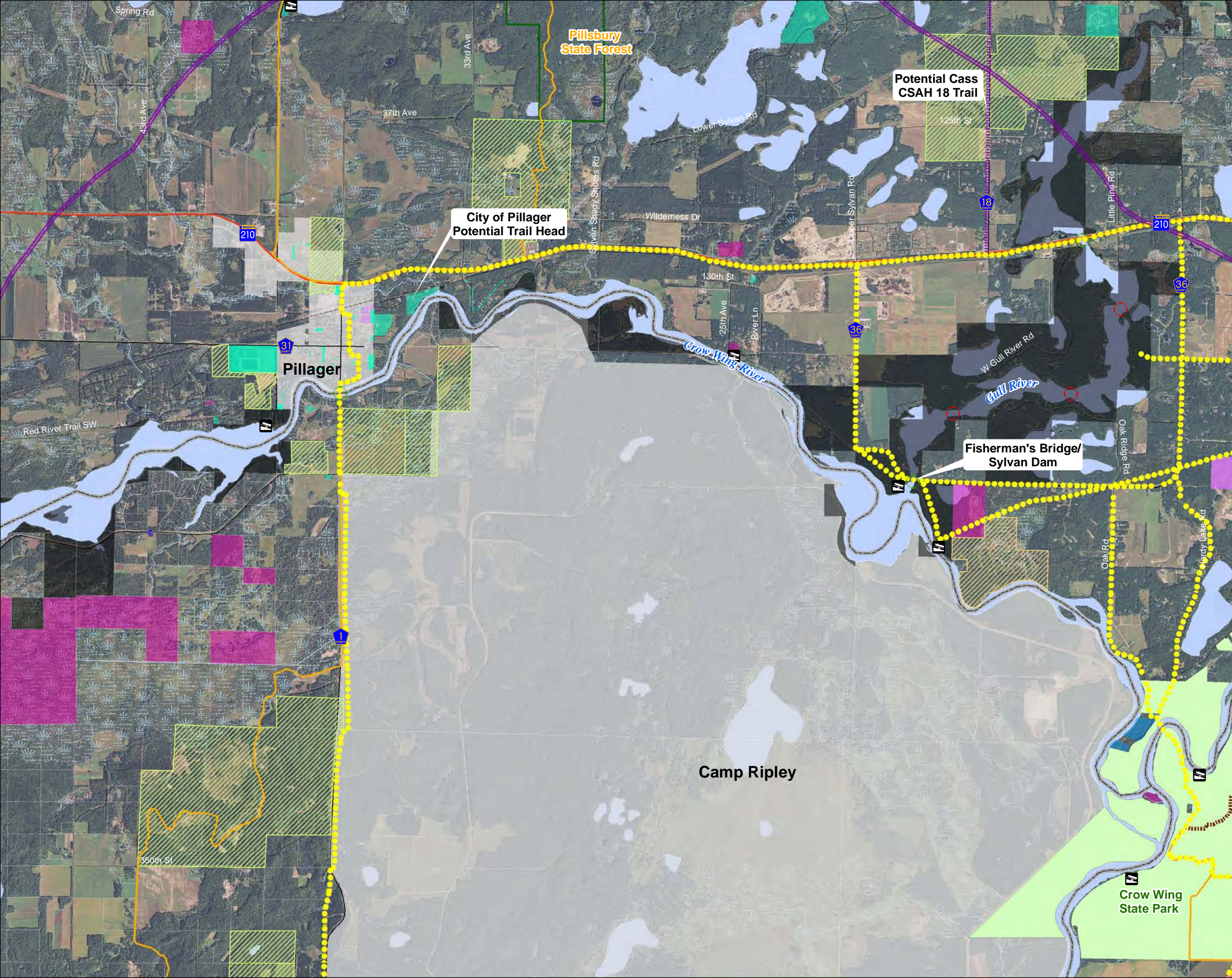
Proposed Paul Bunyan Trail Connection

Crow Wing State Park



# CAMP RIPLEY/VETERANS STATE TRAIL

Figure 6: Overview Map



**Legend**

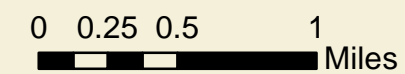
- Water Access Site
- Alternative Multiuse Alignments
- Alternative Motorized Only Alignments
- Paul Bunyan State Trail
- Planned Paul Bunyan State Trail
- Grant-in-Aid Snowmobile Trail
- Regional ATV Trails
- Potential Cass County Trail

**ACUB Parcels**

- BWSR Easement
- DNR Easement
- State Park
- State Scientific and Natural Areas
- State Forest
- State Wildlife Management Area Boundaries
- Municipal Boundary & Camp Ripley
- Lakes/Rivers
- Wetlands

**Land Ownership**

- Local
- State
- Minnesota Power and Light
- Existing Bridge - can accommodate trail
- Existing Bridge - not able to accommodate trail
- New Bridge Search Area



**Segment 1:**  
Crow Wing State Park to Pillager

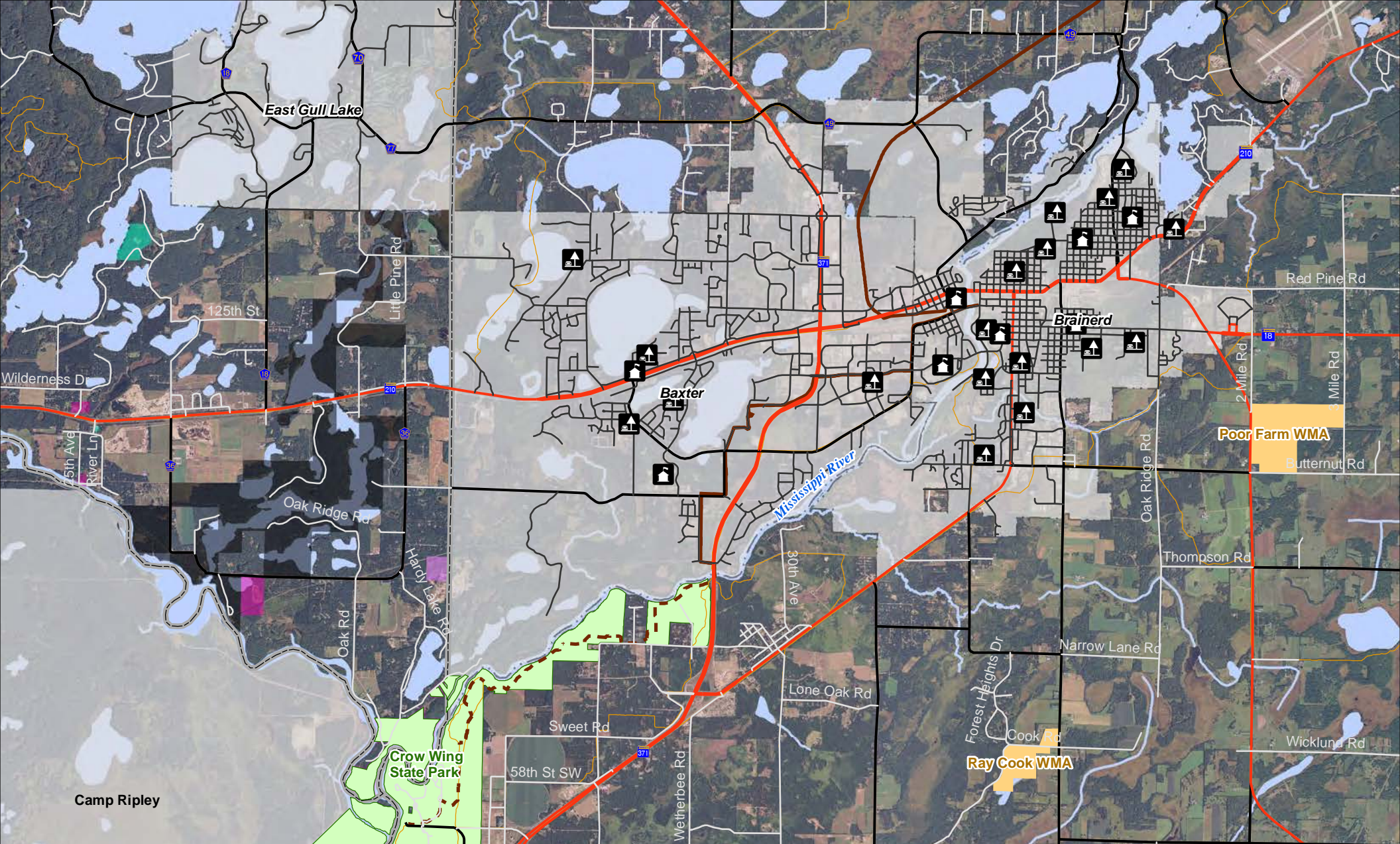
**Segment 1B**

August 2012

Source: MnDNR, Mn\DOT, Cass County, Crow Wing County, Morrison County



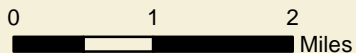




# Camp Ripley/Veterans State Trail

Figure 7: Baxter/Brainerd Area

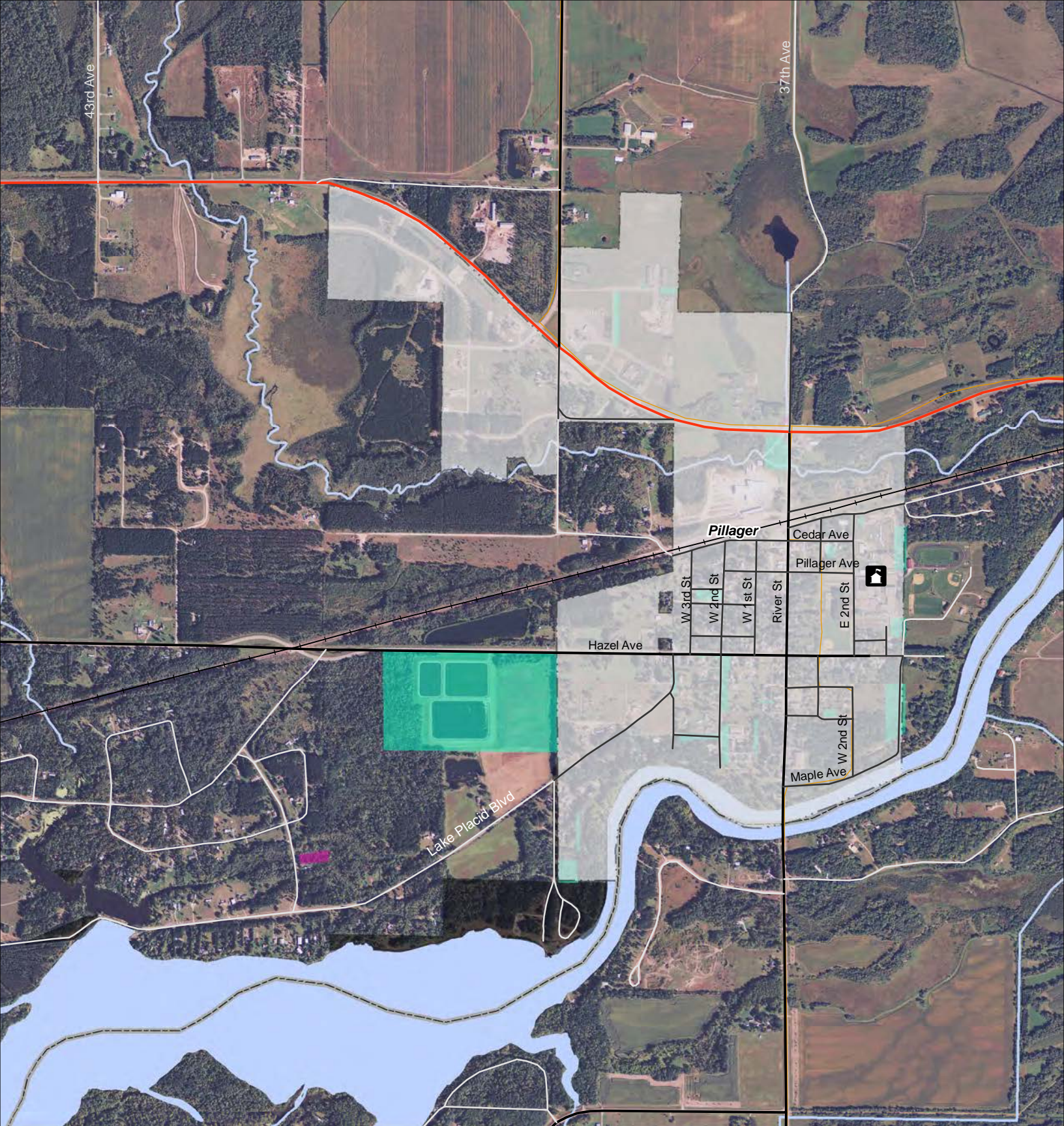
August 2012



Legend	
	Local Parks
	Schools
	Paul Bunyan State Trail
	Planned Paul Bunyan State Trail
	Minnesota Snowmobile Trails
	State Wildlife Management Area Boundaries
	State Park
	City Boundaries
	Local
	Minnesota Power and Light
	County
	State



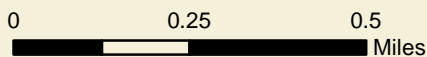




# Camp Ripley/Veterans State Trail

Figure 8: Pillager

August 2012



### Legend

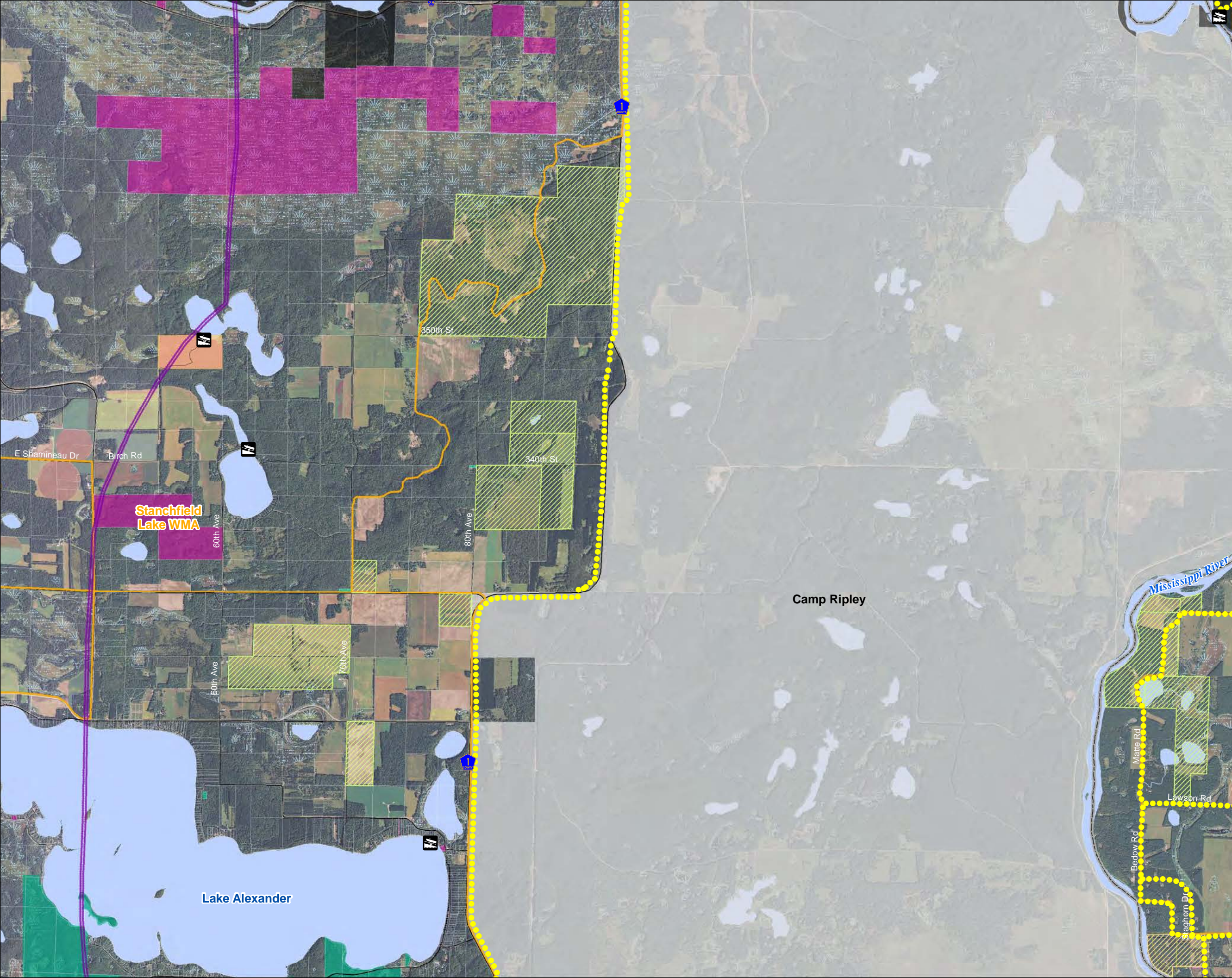
-  Schools
-  Minnesota Snowmobile Trails
-  State Wildlife Management Area Boundaries
-  City Boundaries
-  Lakes/Rivers
- Land Ownership**
-  Local
-  Minnesota Power and Light
-  State





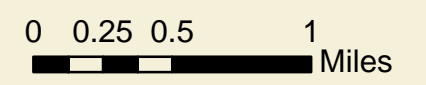
# CAMP RIPLEY/VETERANS STATE TRAIL

Figure 9: Overview Map



**Legend**

- Water Access Site
- Alternative Multiuse Alignments
- Alternative Motorized Only Alignments
- Grant-in-Aid Snowmobile Trail
- ACUB Parcels**
- BWSR Easement
- DNR Easement
- State Wildlife Management Area Boundaries
- State Scientific and Natural Areas
- Municipal Boundary & Camp Ripley
- Lakes/Rivers
- Wetlands
- Land Ownership**
- Local
- State
- Minnesota Power and Light
- The Nature Conservancy Preserves
- Existing Bridge - can accommodate trail
- Existing Bridge - not able to accommodate trail
- New Bridge Search Area



**Segment 2:  
West Side of Camp Ripley  
Segment 2A**

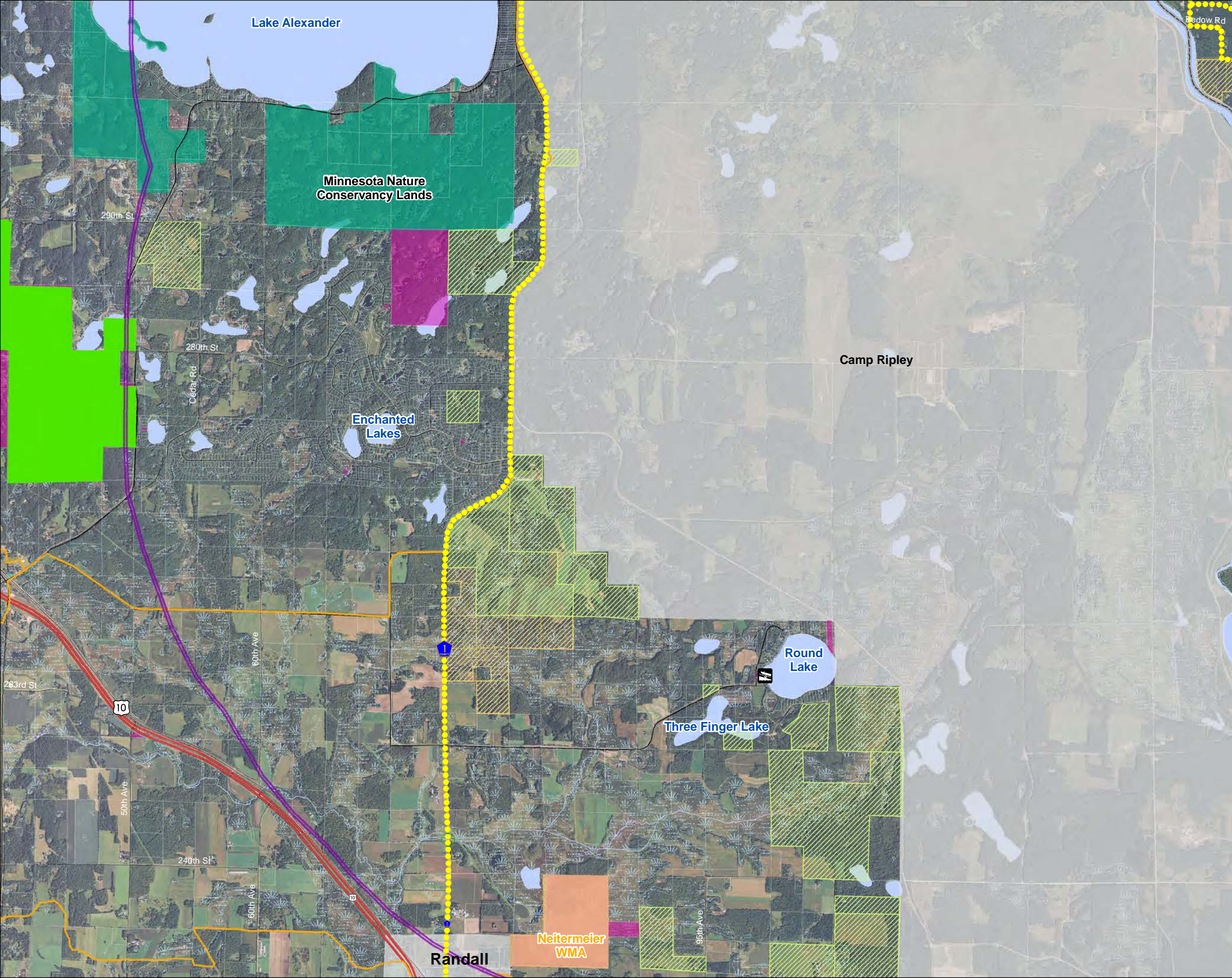
August 2012  
Source: MnDNR, Mn/DOT, Cass County,  
Crow Wing County, Morrison County





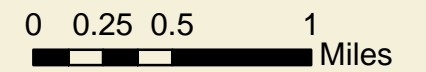
# CAMP RIPLEY/VETERANS STATE TRAIL

Figure 10: Overview Map



**Legend**

- Water Access Site
- Alternative Multiuse Alignments
- Alternative Motorized Only Alignments
- Grant-in-Aid Snowmobile Trail
- ACUB Parcels**
- BWSR Easement
- DNR Easement
- State Wildlife Management Area Boundaries
- State Scientific and Natural Areas
- Municipal Boundary & Camp Ripley
- Lakes/Rivers
- Wetlands
- Land Ownership**
- Local
- County
- State
- The Nature Conservancy Preserves
- Existing Bridge - can accommodate trail
- Existing Bridge - not able to accommodate trail
- New Bridge Search Area



**Segment 2:  
West Side of Camp Ripley  
Segment 2B**

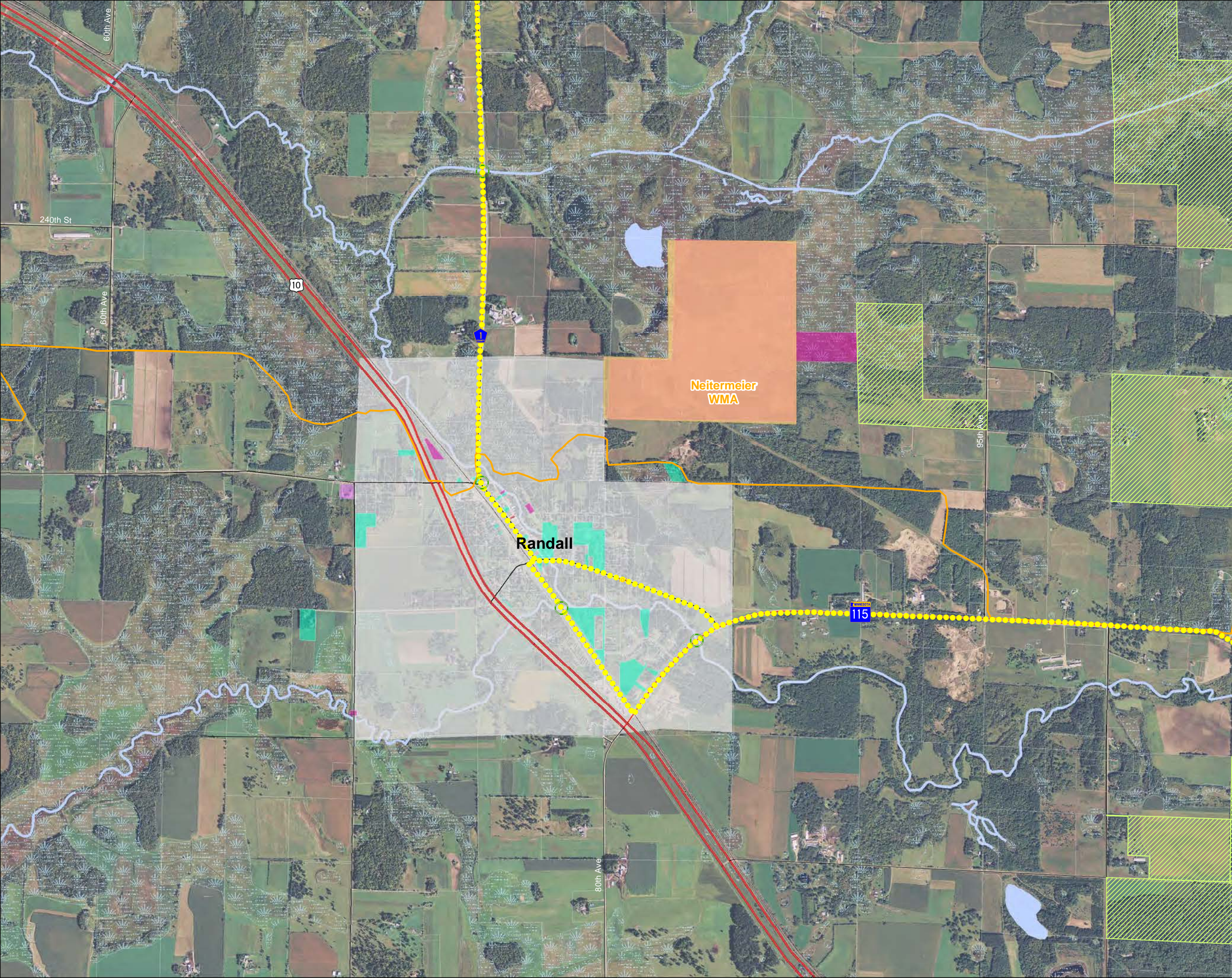
August 2012  
Source: MnDNR, Mn\DOT, Cass County,  
Crow Wing County, Morrison County





# CAMP RIPLEY/VETERANS STATE TRAIL

Figure 11: Overview Map



**Legend**

- Alternative Multiuse Alignments
- Alternative Motorized Only Alignments
- Grant-in-Aid Snowmobile Trail
- Regional ATV Trails
- BWSR Easement
- State Wildlife Management Area Boundaries
- Municipal Boundary & Camp Ripley
- Lakes/Rivers
- Wetlands

**Land Ownership**

- Local
- County
- State
- Federal

**Bridge Information**

- Existing Bridge - can accommodate trail
- Existing Bridge - not able to accommodate trail
- New Bridge Search Area



**Segment 2:  
West Side of Camp Ripley  
Segment 2C**

August 2012

Source: MnDNR, Mn/DOT, Cass County, Crow Wing County, Morrison County

