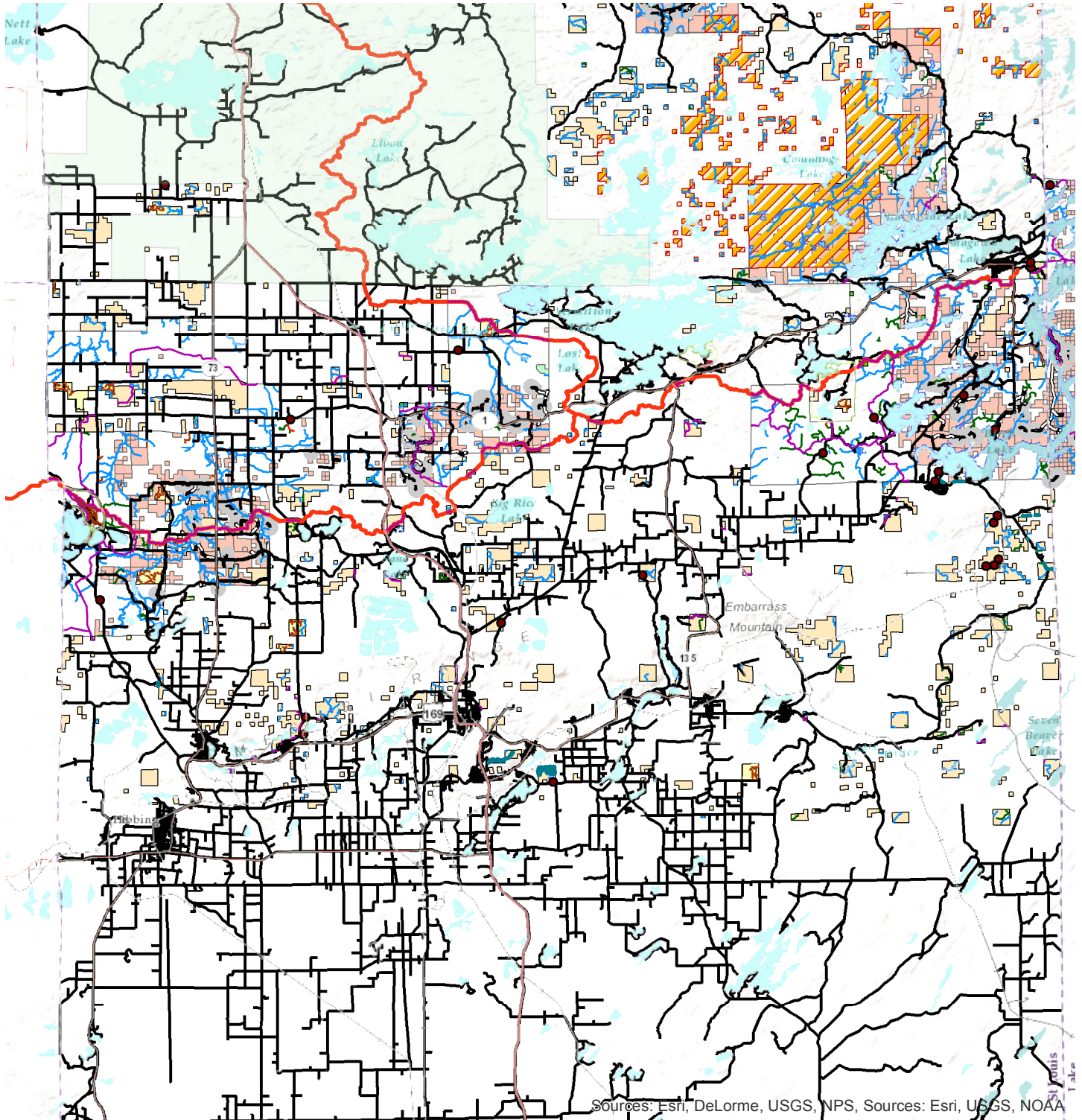


Scattered Lands-Southern Area



Sources: Esri, DeLorme, USGS, NPS, Sources: Esri, USGS, NOAA

- Roads and Trails**
- DNR Roads and Trails**
 - Minimum Maintenance Roads
 - System Roads
 - Nonmotor Trails
 - Snowmobile Trails
 - Designated OHV Trails
 - Hunter/Walking Trails
 - Minnesota State Trails (MS 85.015)
 - County Roads**
 - County Roads
 - USFS Roads and Trails**
 - Roads Open to All Vehicles, Yearlong
 - Roads Open to Highways Legal Vehicles Only, Yearlong
 - Roads Open to Highways Legal Vehicles Only, Seasonal
 - Special Designation, Yearlong
 - Special Designation, Seasonal
 - Trails Open to Vehicles 50' or Less in Width, Yearlong
 - Trails Open to Vehicles 50' or Less in Width, Seasonal
 - Special Designation, Yearlong
 - Special Designation, Seasonal

- Other Features**
- Boundary Waters Canoe Area Wilderness
 - Puffer Grouse Management Areas
 - Areas with Limitations
 - Scientific and Natural Areas
 - DNR Gravel Pits
- Land Ownership**
- Lake County
 - St. Louis County
 - US Government
 - DNR-Owned Land
 - State Forest Lands

- Water Features**
- Rivers and Streams
 - Lakes

