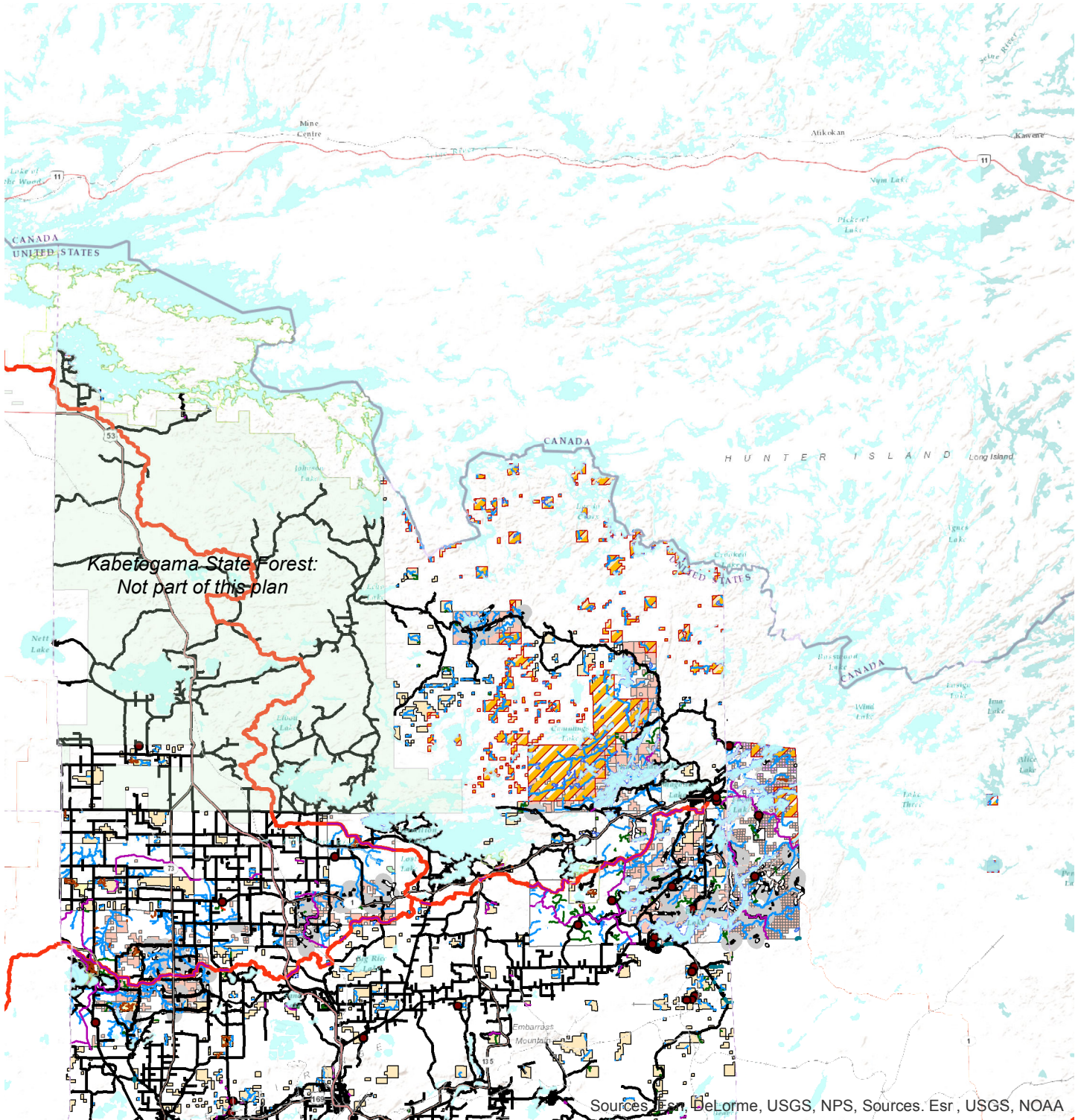


Scattered Lands-Northern Area



- Roads and Trails**
- DNR Roads and Trails**
- Minimum Maintenance Roads
 - System Roads
 - Nonmotor Trails
 - Snowmobile Trails
 - Designated OHV Trails
 - Hunter/Walking Trails
 - Minnesota State Trails (MS 85.015)
- County Roads**
- County Roads
- USFS Roads and Trails**
- Roads Open to All Vehicles, Yearlong

- Roads Open to All Vehicles, Seasonal
 - Roads Open to Highway Legal Vehicles Only, Yearlong
 - Roads Open to Highway Legal Vehicles Only, Seasonal
 - Special Designation, Yearlong
 - Special Designation, Seasonal
 - Trails Open to Vehicles 50' or Less in Width, Yearlong
 - Trails Open to Vehicles 50' or Less in Width, Seasonal
 - Special Designation, Yearlong
 - Special Designation, Seasonal
- Water Features**
- Rivers and Streams
 - Lakes

- Other Features**
- Boundary Waters Canoe Area Wilderness
 - Puffer Goose Management Areas
 - Areas with Limitations
 - Scientific and Natural Areas
 - DNR Gravel Pits
- Land Ownership**
- Lake County
 - St. Louis County
 - US Government
 - DNR Owned Land
 - State Forest Lands

