

Nemadji SF Proposed Changes

Type of Change

- Field Check
- Proposed Hunter Walking Trail
- Proposed New Designation
- Proposed Undesignate

State Forest Roads

- (open to all motor vehicles unless posted closed)

ATV/OHM (current)

- (open to OHMs, Class 1 and 2 ATVs)

ATV/OHM (proposed)


- (open to OHMs and Class 1 ATVs only)
- (open to OHM only)

Trails

- Minnesota State Trails
- Minnesota Snowmobile Trails

Other Features

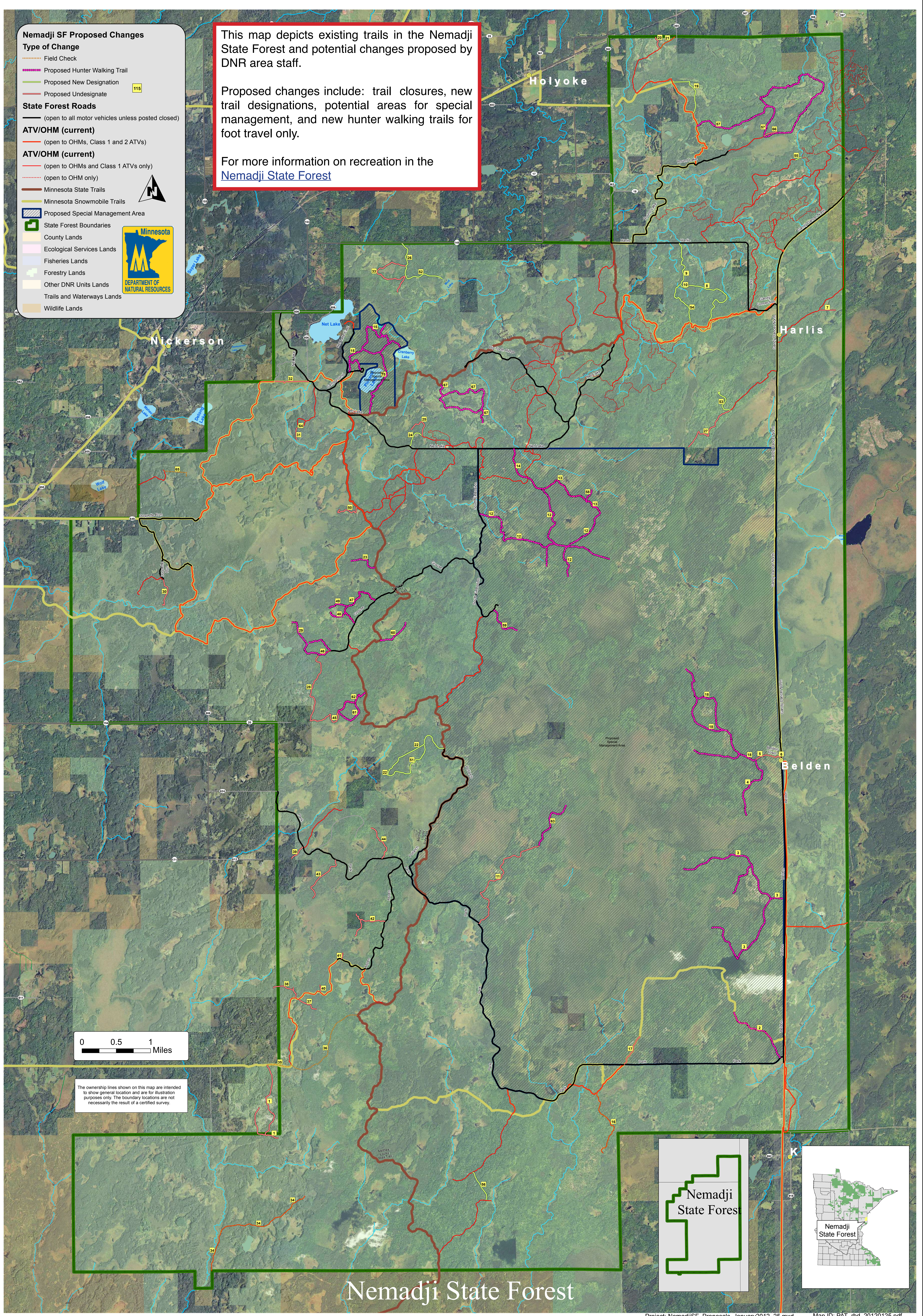
- Proposed Special Management Area
- State Forest Boundaries
- County Lands
- Ecological Services Lands
- Fisheries Lands
- Forestry Lands
- Other DNR Units Lands
- Trails and Waterways Lands
- Wildlife Lands



This map depicts existing trails in the Nemadji State Forest and potential changes proposed by DNR area staff.

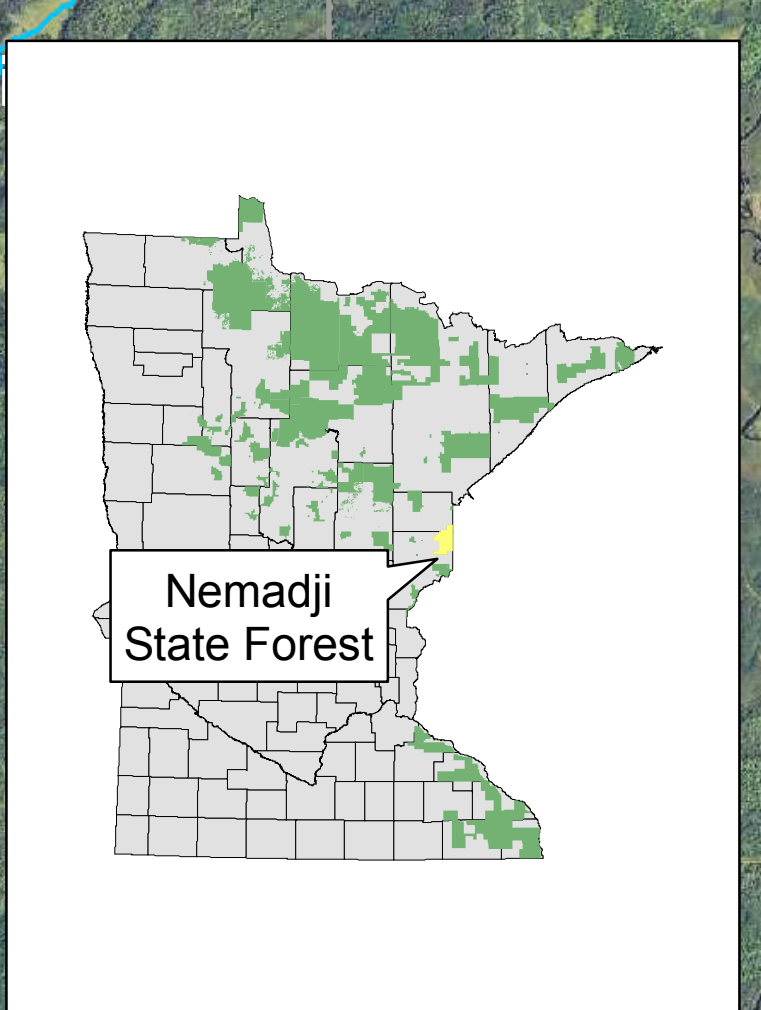
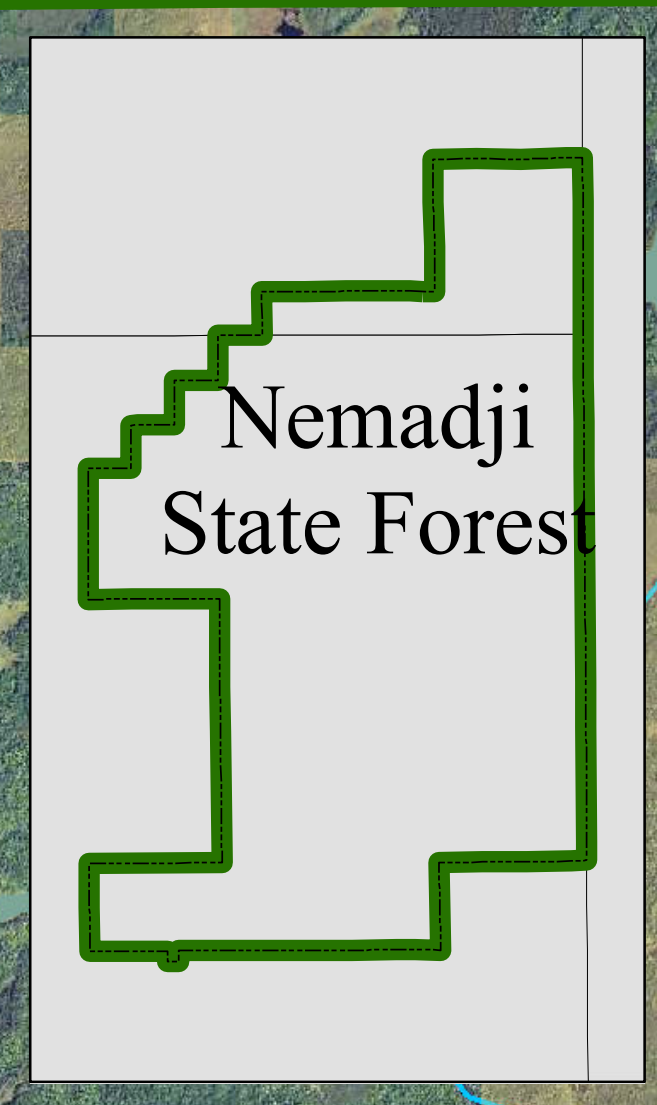
Proposed changes include: trail closures, new trail designations, potential areas for special management, and new hunter walking trails for foot travel only.

For more information on recreation in the [Nemadji State Forest](#)



0 0.5 1 Miles

The ownership lines shown on this map are intended to show general location and are for illustration purposes only. The boundary locations are not necessarily the result of a certified survey.



Nemadji State Forest