

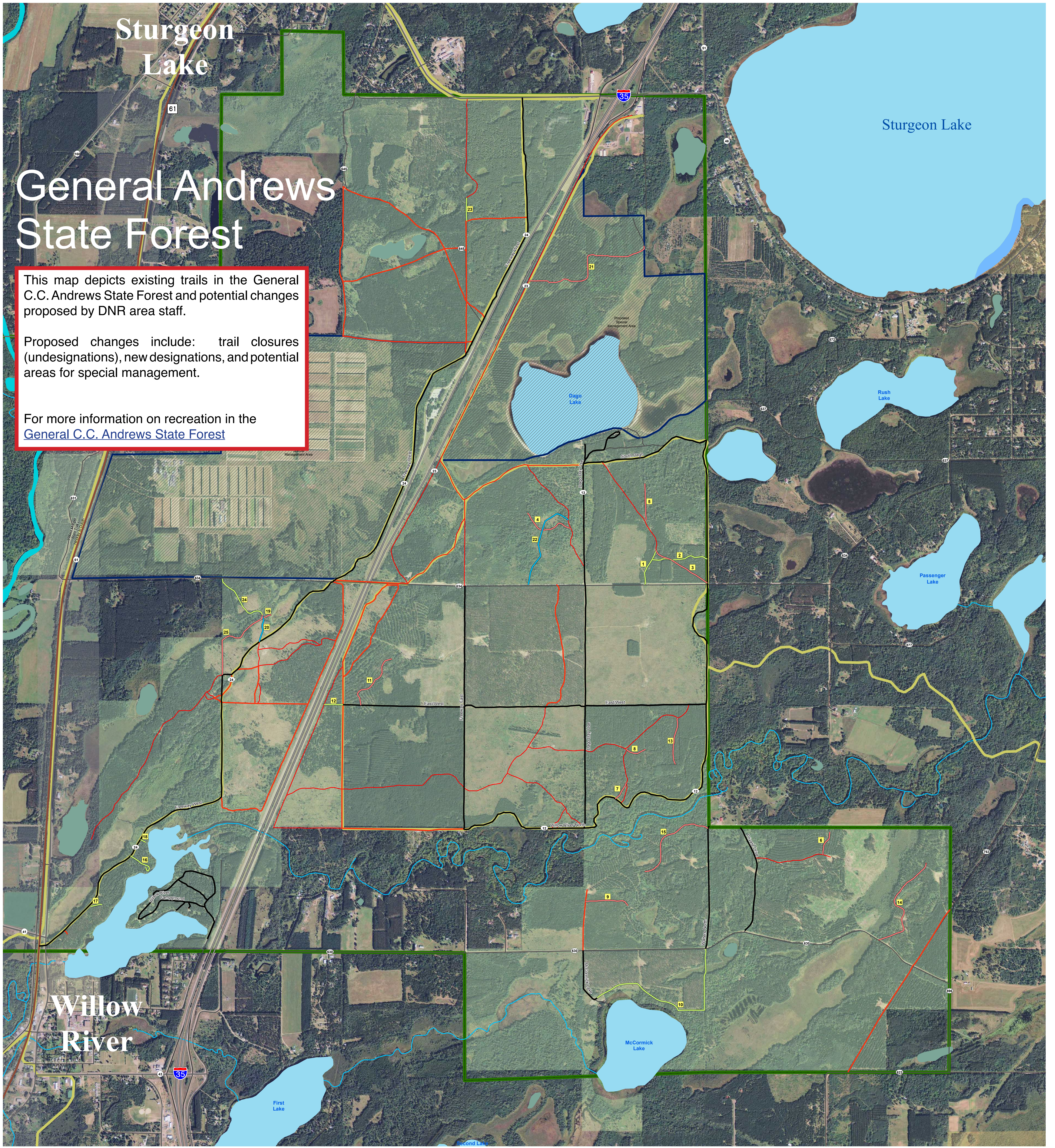
Sturgeon Lake

General Andrews State Forest

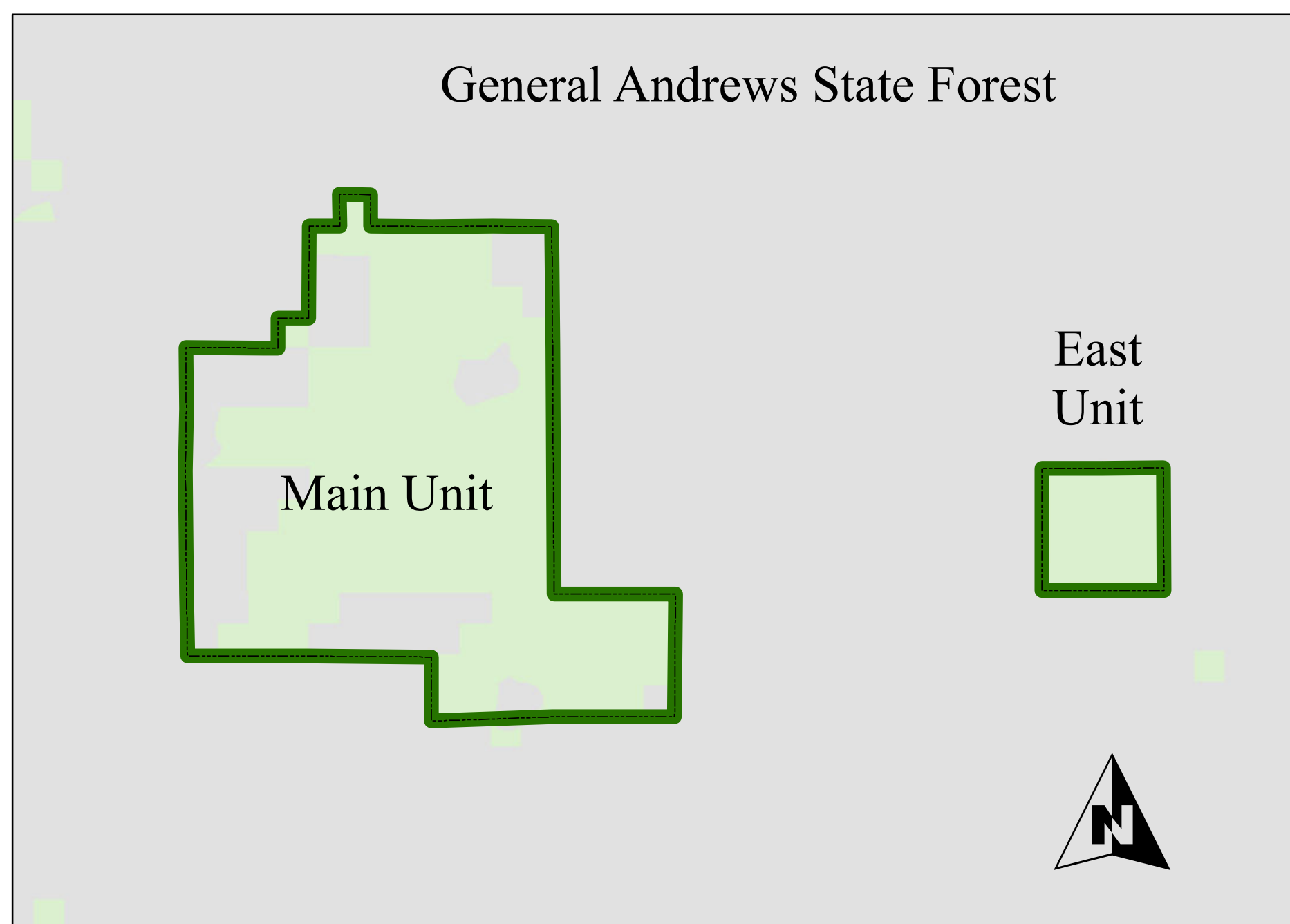
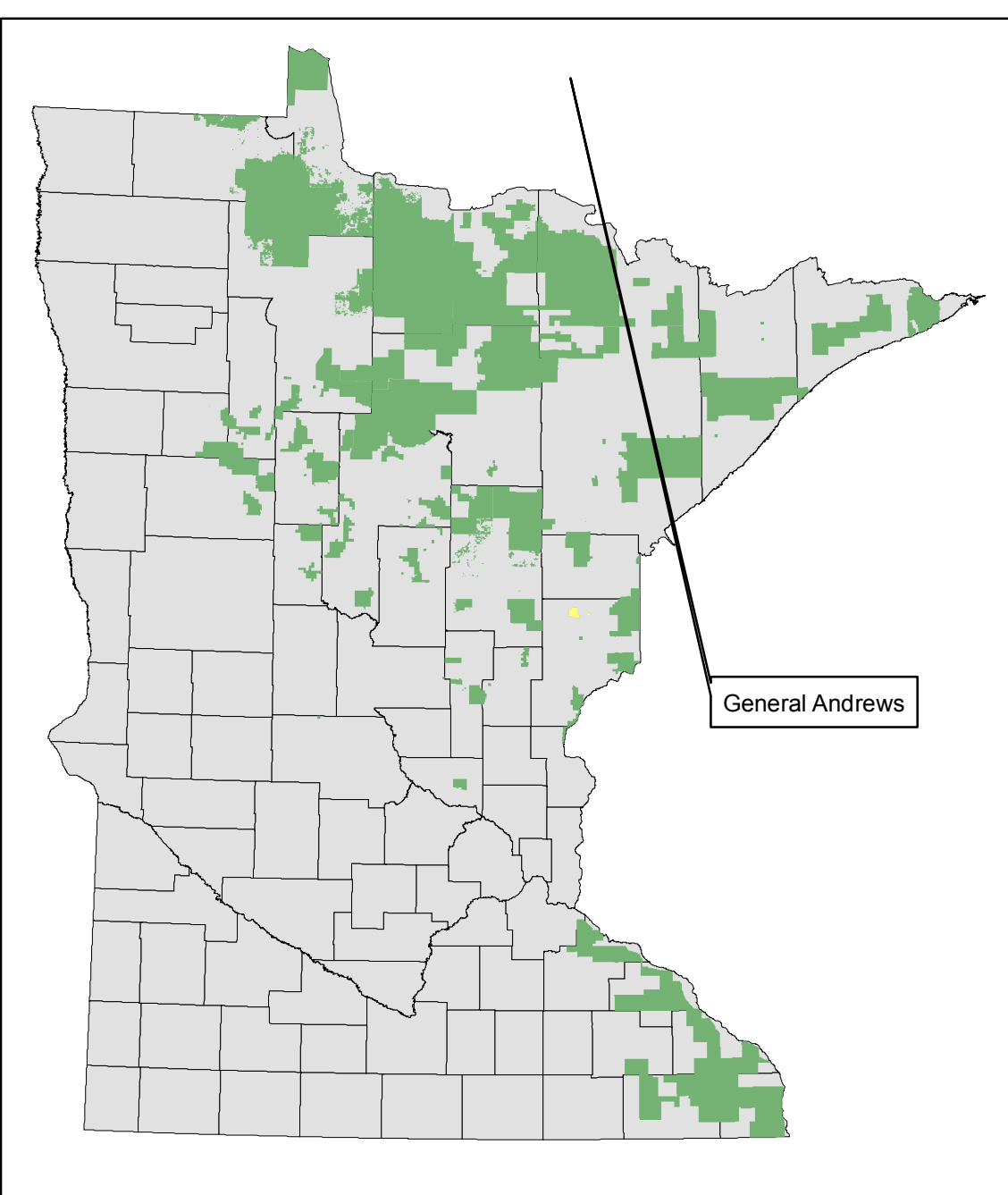
This map depicts existing trails in the General C.C. Andrews State Forest and potential changes proposed by DNR area staff.

Proposed changes include: trail closures (undesignations), new designations, and potential areas for special management.

For more information on recreation in the [General C.C. Andrews State Forest](#)



The ownership lines shown on this map are intended to show general location and are for illustration purposes only. The boundary locations are not necessarily the result of a certified survey.



General Andrews SF Proposed Changes

Type of Change

- Proposed New Route
- Proposed New Designation
- Proposed Undesignate

State Forest Roads

- (open to all motor vehicles unless posted closed)
- Minnesota State Trails

ATV/OHM

- (open to OHMs, Class 1 and 2 ATVs)
- (open to OHMs and Class 1 ATVs only)

OHM (current)

- (open to OHM only)
- Minnesota Showmobile Trails

Proposed Special Management Area

- State Forest Boundaries
- County Lands
- Ecological Services Lands
- Fisheries Lands
- Forestry Lands
- Other DNR Units Lands
- Trails and Waterways Lands
- Wildlife Lands

