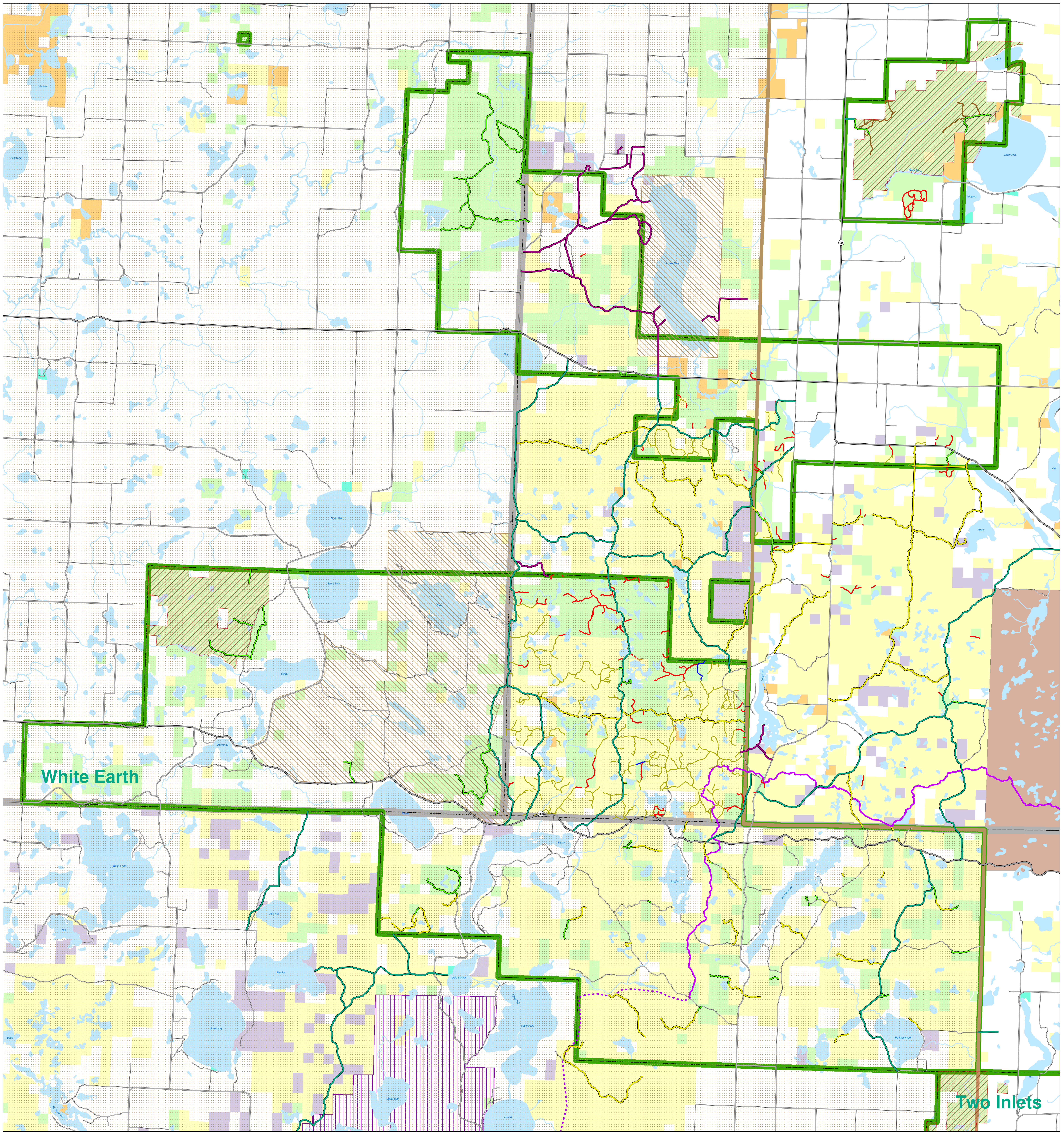
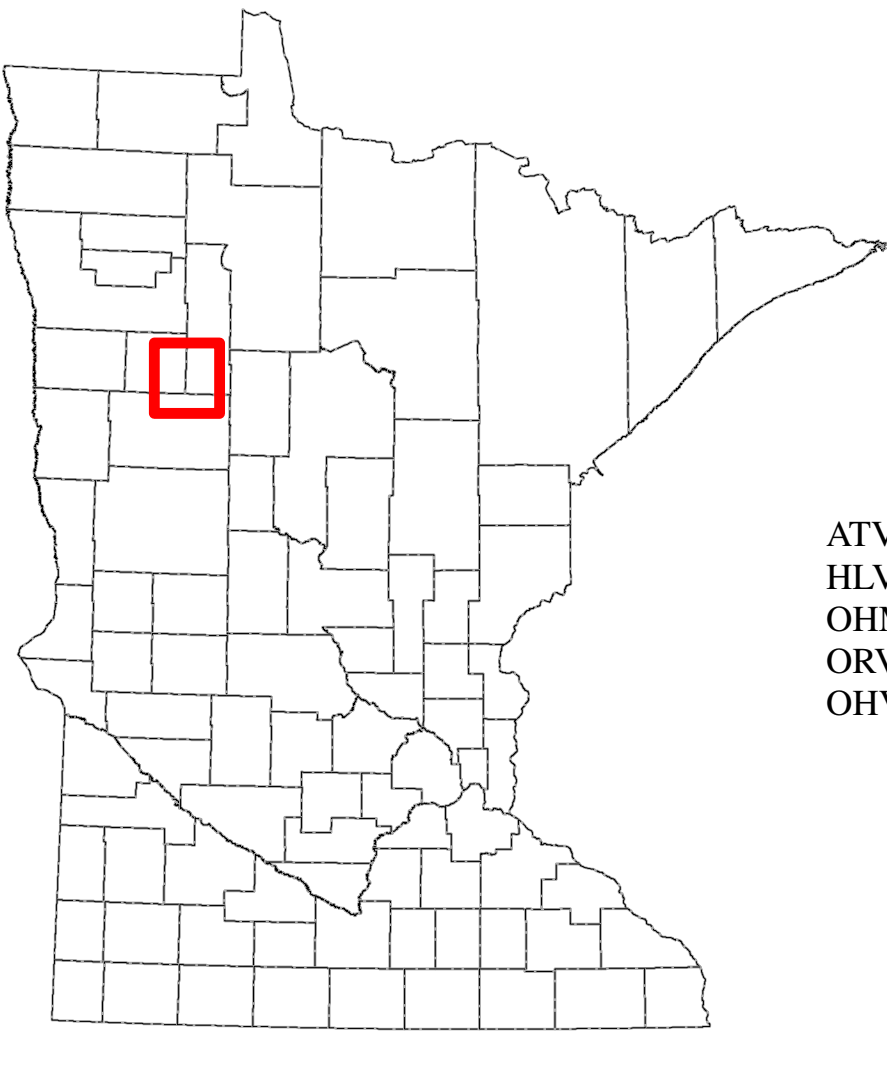
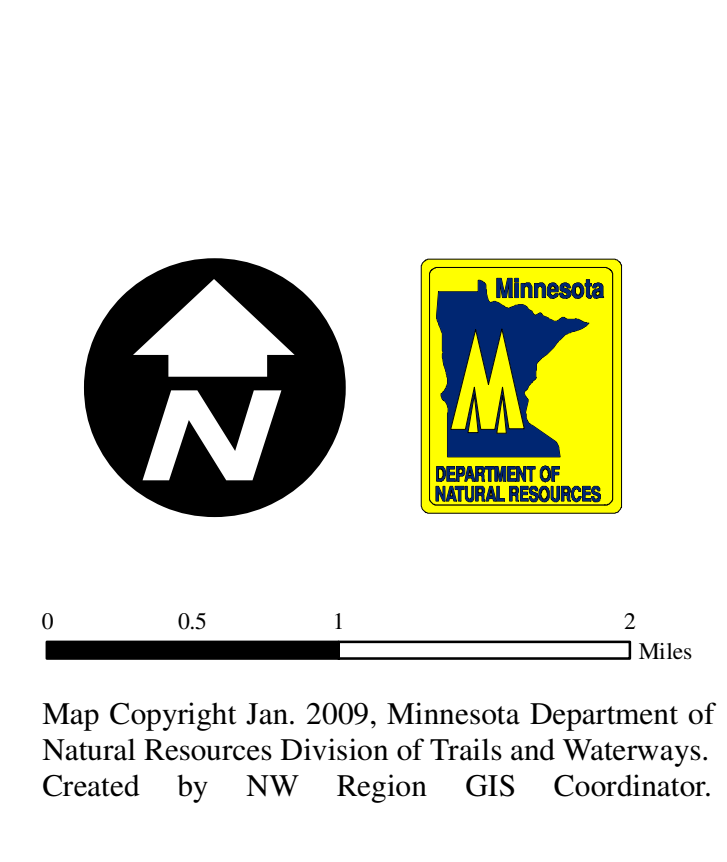


# White Earth State Forest Road and Trail Designation Plan



- Plan Key**
- State Forest Minimum Maintenance Road
  - State System Forest Road
  - White Earth Tribal Road
  - Undefined County Route
  - Non-designated Route
  - Proactive Closure
  - Non-motorized Trail
  - County Forest Road
  - ATV-OHM Only Trail
  - Hunter Walking Trail
  - Proposed North Country Hiking Trail
  - Existing North Country Hiking Trail
  - Area with Limitations on Motor Vehicle Use
  - Interstate
  - Federal Trunk Highway
  - State Trunk Highway
  - County Road
  - Township Road
  - Band Preservation Area
  - White Earth Reservation Boundary
  - State Forest Boundary
  - Populated Place
  - County Border
  - River or Stream
  - Lake or Pond
  - National Wildlife Refuge
  - Tribal Land
  - State Land - County Administered
  - State Land - Division of Forestry
  - State Land - Division of Trails and Waterways
  - State Land - General Administration
  - State Park Statutory Boundary
  - State Scientific and Natural Area
  - State Wildlife Management Area



ATV: All-Terrain Vehicle, includes Class I and Class II  
 HLV: Highway-Licensed Vehicle  
 OHM: Off-Highway Motorcycle  
 ORV: Off-Road Vehicle  
 OHV: Off-Highway Vehicle, a generic term that includes ORV, ATV, and OHM, but not HLV.

- Forest Roads**
- Provide access for resource management activities and public use.
  - Are not considered "public highways" and the resource agencies are not "road authorities."
  - Are typically open to use by both highway-licensed vehicles (HLV) and off-highway vehicles (OHV).
- System Forest Roads**
- Graveled and maintained.
  - Minimum width of 14 feet or 1 1/2 to two lanes wide, so highway-licensed vehicles can easily meet.
  - Some on Wildlife Management Area lands are signed as closed to off-highway vehicles.
  - Signed with system road name at major intersections.
- Minimum Maintenance Forest Roads**
- May be gravelled or native soil surfaced.
  - Width is narrow or one lane wide, making it difficult to meet vehicles.
  - Caution is recommended when traveling, low-clearance highway vehicles may not be suited for use on these roads.
  - Will be signed "Road may be impassable. Travel at your own risk."
- White Earth Tribal Roads**
- Reservation-operated roads on par with township- or county-maintained roads.
  - Both paved and unpaved types present.
- Undefined Becker County Roads**
- Routes occurring on Becker County tax-forfeit lands.
  - Ranges from well-maintained, paved or gravelled roads to natural surface forest trails.
  - Future motor vehicle status under development by Becker County.
- Non-designated Routes**
- Unassigned routes on State Forest lands classified as limited.
  - Available for non-motorized use in an "as is" condition, with the user responsible for ensuring that there is no damage to the route.
  - Available for motor vehicle use under the big game hunting and trapping exceptions as per MN Stat. 84.926, subd. 4.
  - Illegal to operate a vehicle on these routes in a manner that causes erosion, rutting, or injuries, or that damages or destroys trees or growing crops (MN Rules 6100.1950 Subpart 7A).
  - Width and route surface varies. All routes depicted may not be passable for all types of uses.
- Proactive Closures**
- Routes where all public motor use is prohibited, including recreational OHV use and motor vehicle use under the big game hunting and trapping exceptions.
  - Routes are signed closed, gates, barricades, or berming may be present.
- ATV & OHM Recreational Trails**
- Signed and maintained routes for ATV and OHM use that may use system and minimum maintenance forest roads for connections to local points of interest and facilities.
  - Additional parking/signing areas may be proposed.
- Walking Trails**
- Signed, maintained routes for walking and non-motorized use.
  - Includes routes currently signed and managed as walking trails.
- Areas with Limitations on Off-trail and Non-designated Trail Use (MN Stat. 84.926, subd. 5)**
- Areas within limited forests the big game hunting and trapping exceptions for ATVs and/or HLVs under MN Stat. 84.926, subd. 2 & 4, do not apply.
  - Signs or gates indicate this closure.
- Band Preservation Areas**
- Current land areas the White Earth Reservation would like recognized as special concerns for non-access or activity in those areas.

Equal Opportunity to participate in and benefit from programs of the Minnesota Department of Natural Resources is available to all individuals regardless of race, color, creed, or religion, national origin, sex, marital status, status with regard to public assistance, sexual orientation, age, or disability. Discrimination inquiries should be sent to the Minnesota Department of Natural Resources, 500 Lafayette Road St. Paul, MN 55155-4031; or the Equal Opportunity Office, Department of the Interior, Washington, D.C. 20240.

Disclaimer: The Minnesota Department of Natural Resources makes no representation or warranties, express or implied, with respect to the reuse of data provided herewith, regardless of its format or the means of its transmission. There is no guarantee or presentation to the user as to the accuracy, currency, suitability, or reliability of his data for any purpose. The user accepts the data as is, and assumes all risks associated with its use. By accepting this data, the user agrees not to transmit this data or provide access to it or any part of it to another party unless the user shall include with the data a copy of this disclaimer. The Minnesota Department of Natural Resources assumes no responsibility for actual or consequential damage incurred as a result of any user's reliance on this data. Public Ownership information on this map comes from a variety of sources and every effort was made to define these areas as accurately as possible. Please refer to posted signs on the ground for exact locations.