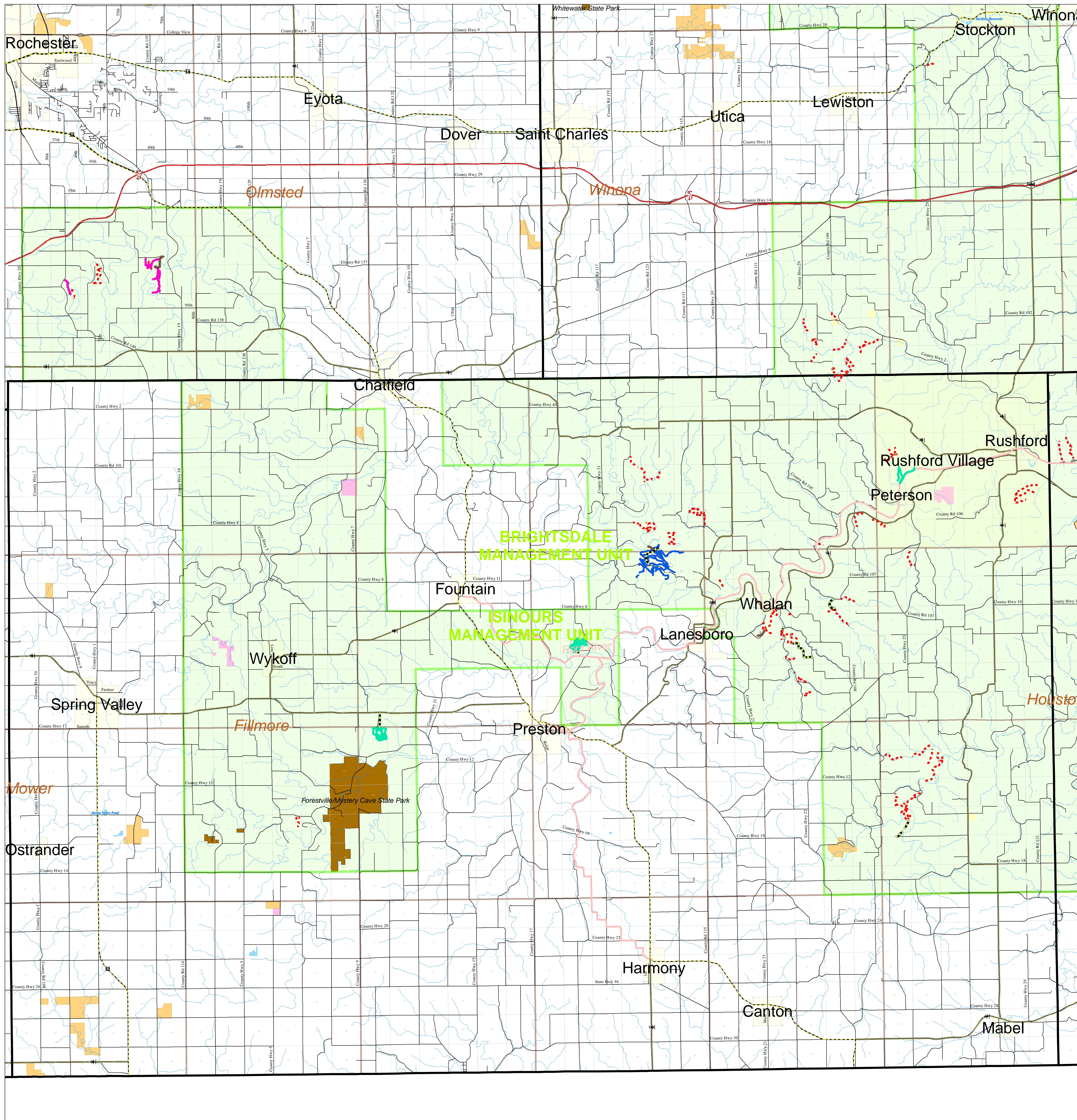


# Southern Minnesota State Forest Classification Review and Road - Trail Planning

Richard J. Dorer  
(Southwest)

Trail Designations  
November 6, 2008

1 inch equals 1.1 miles



- Interstate
- Federal Trunk
- State Trunk
- MNDOT County Roads
- MNDOT Township Roads
- SFR
- MMR
- ATV/OHV/BIKE/HORSE
- HORSE ONLY
- MOUNTAIN BIKE ONLY
- HORSE AND BIKE
- PROACTIVE CLOSURE
- HIKING
- DNR Administered State Trails
- - - NON-DESIGNATED
- Rivers and Streams
- State Forests
- Wildlife Management Area
- County Lands
- Scientific and Natural Areas
- Tribal Lands
- PLS Townships
- State Park
- State Recreation Area
- State Wayside
- Sections
- National Wildlife Refuges
- County Boundaries

Disclaimer:  
The Minnesota Department of Natural Resources makes no representation or warranties, express or implied, with respect to the results of data provided hereon, regardless of its format or the means of its transmission. There is no guarantee or representation to the user as to the accuracy, currency, suitability, or reliability of the data for any purpose. The user accepts the data "as is," and assumes all risks associated with its use. By accepting this data, the user agrees not to transmit this data or provide access to it or any part of it to another party unless the user shall include with the data a copy of this disclaimer.

The Minnesota Department of Natural Resources assumes no responsibility for actual or consequential damage incurred as a result of any user's reliance on this data.

Public Ownership information on this map comes from a variety of sources and every effort was made to define these areas as accurately as possible. Please refer to posted signs on the ground for exact locations.



Map Copyright, November 2008  
Minnesota Department of Natural Resources  
Division of Forestry

Equal Opportunity to participate in and benefit from programs of the Minnesota Department of Natural Resources is available to all individuals regardless of race, color, creed, or religion, national origin, sex, marital status, status with regard to public assistance, sexual orientation, age, or disability. Discrimination inquiries should be sent to the Minnesota Department of Natural Resources, 520 Lafayette Road, St. Paul, MN 55155-4031, or the Equal Opportunity Office, Department of the Interior, Washington, D.C. 20240.