

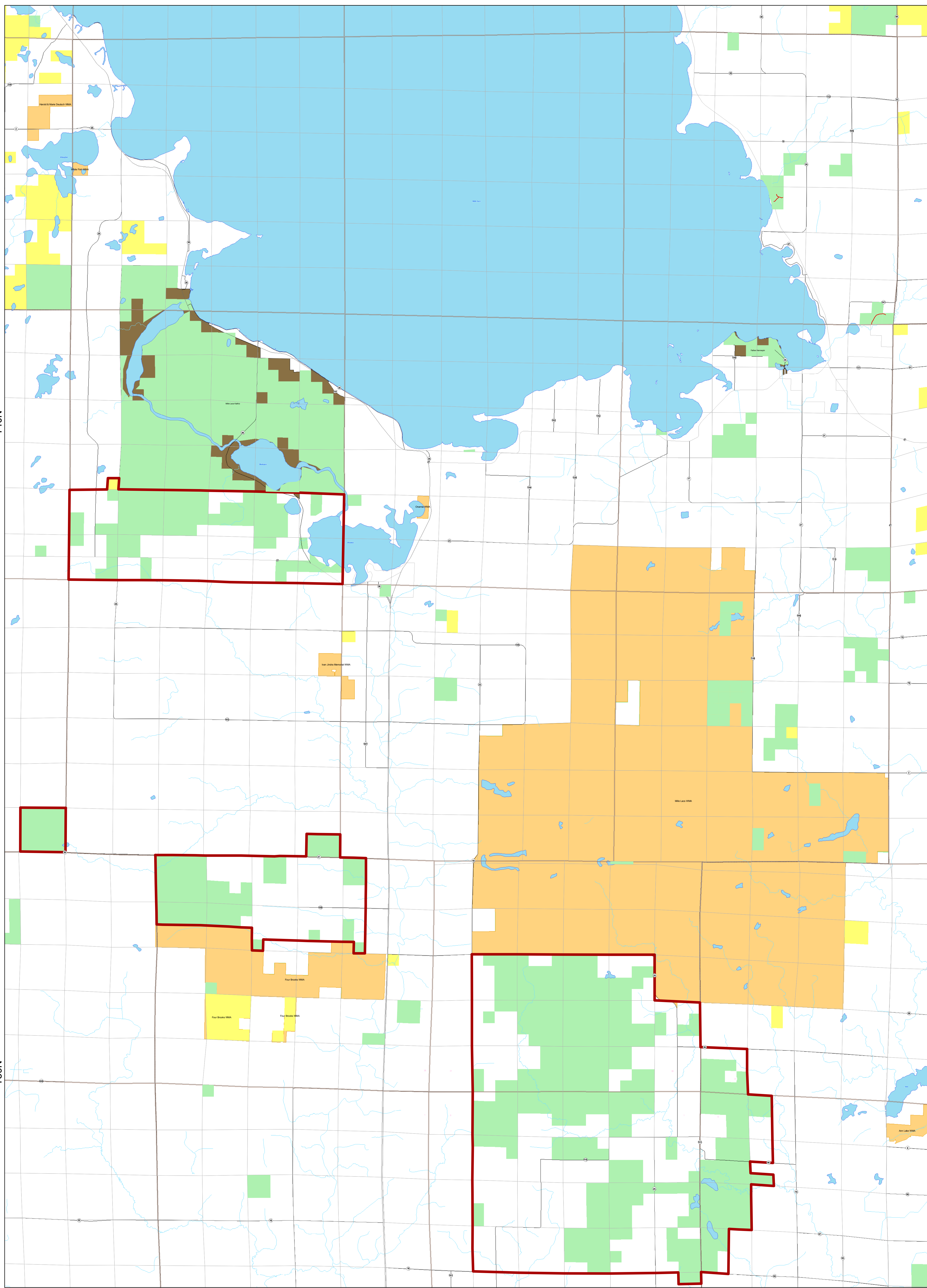
Rum River State Forest Scattered Forestry Lands Forest Road and Trail Designation Plan

R26W

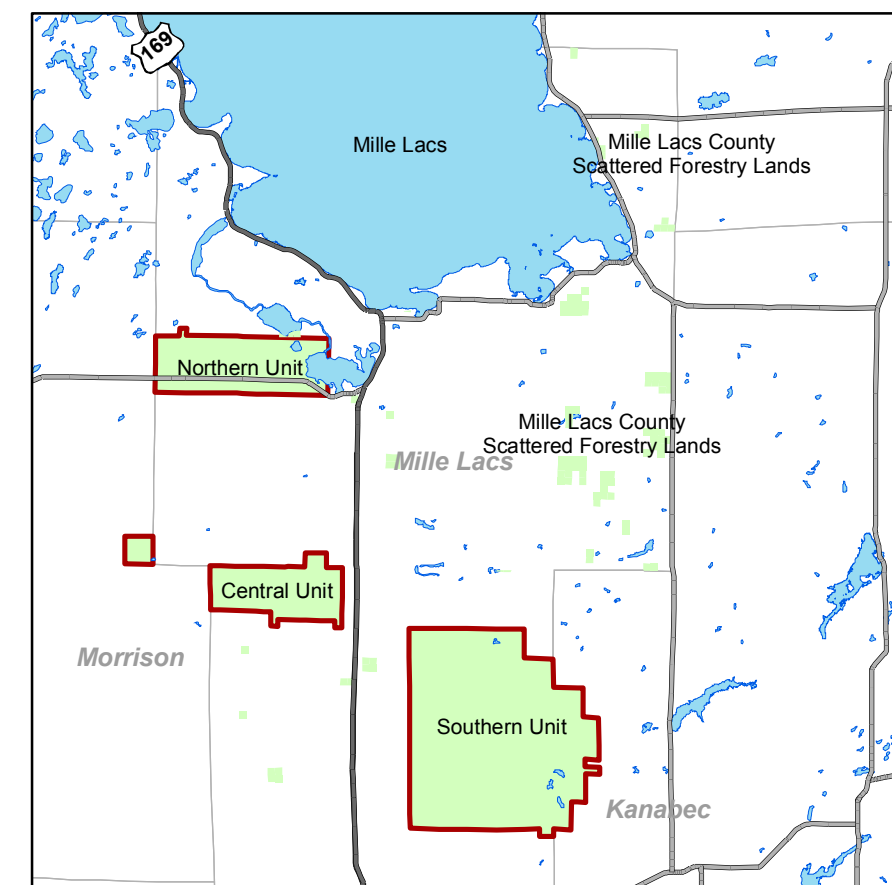
R25W

T40N

T39N



Location Map



Forest roads: typically open to use by both highway-licensed vehicles and off-highway vehicles

System Forest Roads:
May be gravelled or native soil surfaced
Maintained and graded to allow use by highway vehicles including cars

Forest Minimum Maintenance Roads:
Are typically narrow and native soil surfaced
Caution is recommended when traveling, low clearance highway vehicles may not be suited for use on these roads

HLY: Highway-licensed Vehicles
OHV: Off-Highway Vehicles, includes ORV, ATV and OHM
ORV: Off-Road Vehicle
ATV: All-Terrain Vehicle
OHM: Off-Highway Motorcycle

Map Explanation

- Forest System Roads
- Proposed Minimum Maintenance Forest Roads
- Proposed Undesignated (Closed) Routes
- State, County and Township Roads
- Snowmobile Trails (for reference only)
- County Lands
- State Forestry Lands
- Wildlife Management Areas
- State Parks
- Private and Other Public Lands
- State Forest Boundary

Disclaimer:
The Minnesota Department of Natural Resources makes no representation or warranties, express or implied, with respect to the reuse of data provided herewith, regardless of its format or the means of its transmission. There is no guarantee or representation to the user as to the accuracy, currency, suitability, or reliability of this data for any purpose. The user accepts the data as is, and assumes all risks associated with its use. By accepting this data, the user agrees not to transmit this data or provide access to it or any part of it to another party unless the user shall include with the data a copy of this disclaimer.

The Minnesota Department of Natural Resources assumes no responsibility for actual or consequential damage incurred as a result of any user's reliance on this data.

Public Ownership information on this map comes from a variety of sources and every effort was made to define these areas as accurately as possible. Please refer to posted signs on the ground for exact locations.



Map Copyright, December 2006
Minnesota Department of Natural Resources
Division of Trails and Waterways

Equal Opportunity to participate in and benefit from programs of the Minnesota Department of Natural Resources is available to all individuals regardless of race, color, creed, or religion, national origin, sex, marital status, status with regard to public assistance, sexual orientation, age, or disability. Discrimination inquiries should be sent to the Minnesota Department of Natural Resources, 500 Lafayette Road, St. Paul, MN 55155-4031; or the Equal Opportunity Office, Department of the Interior, Washington, D.C. 20240.